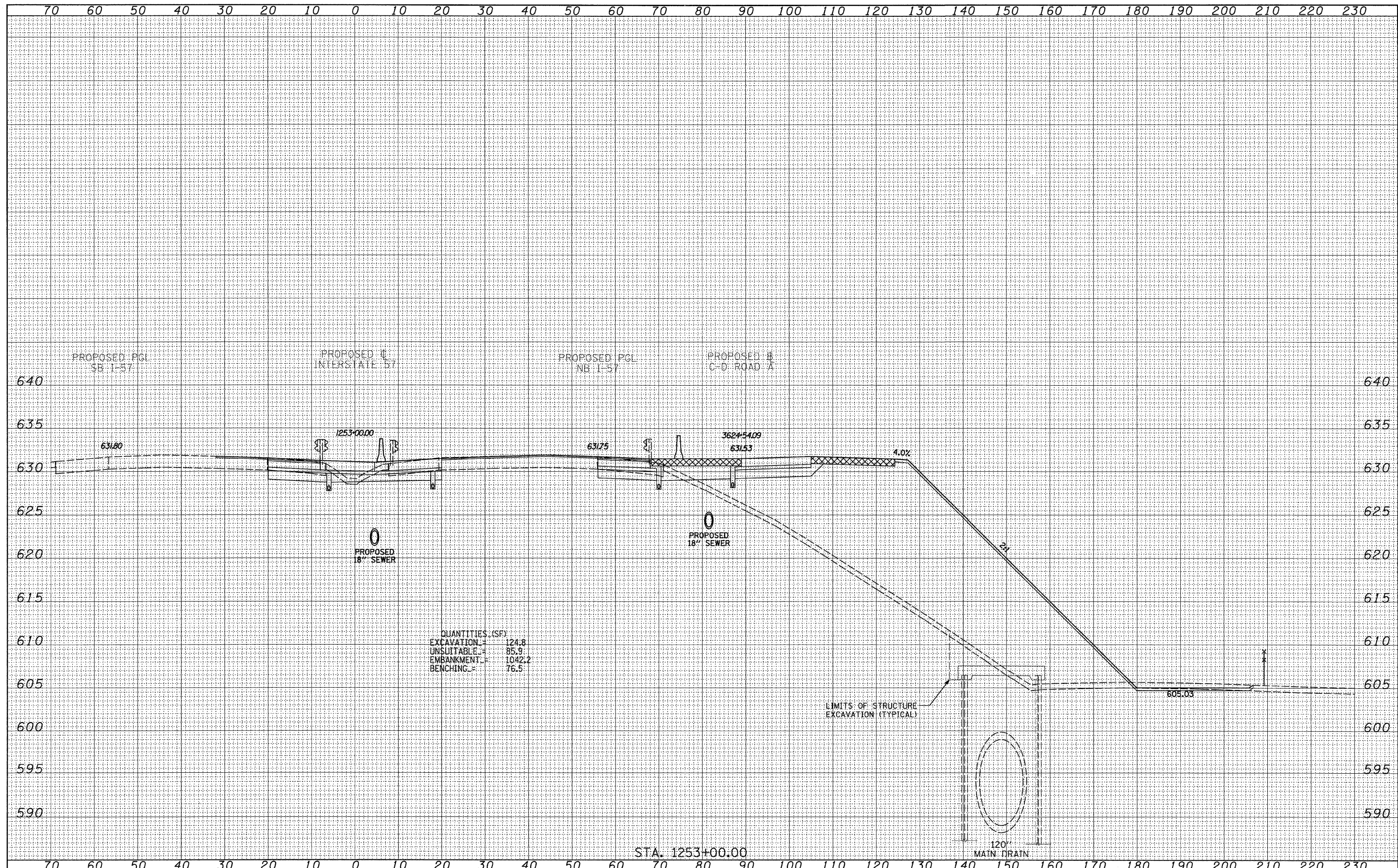
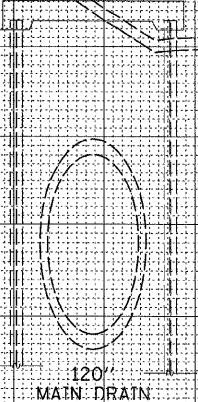


FINAL SURVEY	DATE
SURVEYED	BY
REVISIONS	
NOTE BOOK	
AREAS CHECKED	
NO.	

ORIGINAL SURVEY	DATE
SURVEYED	BY
REVISIONS	
NOTE BOOK	
AREAS CHECKED	
NO.	



QUANTITIES (SF)
 EXCAVATION = 124.8
 UNSUITABLE = 85.9
 EMBANKMENT = 1042.2
 BENCHING = 76.5



TYLIN INTERNATIONAL

USER NAME =	DESIGNED - JDF	REVISED - 4/29/2010
PLOT SCALE =	DRAWN - JDF	REVISED -
PLOT DATE =	CHECKED - JPM	REVISED -
	DATE - 3/18/2010	REVISED -

**STATE OF ILLINOIS
 DEPARTMENT OF TRANSPORTATION**

**I-57 AT I-294 INTERCHANGE PROJECT
 PROPOSED I-57 CROSS SECTIONS**
 SCALE: 1" = 10' V, 1" = 80' H
 SHEET NO. OF SHEETS STA. 1253+00.00 TO STA. 1253+00.00

F.A.T. RTE.	SECTION	COUNTY	TOTAL SHEETS	SHEET NO.
57	1414.2B	COOK	516	497
FED. ROAD DIST. NO.			ILLINOIS FED. AID PROJECT	
			CONTRACT NO. 60J27	