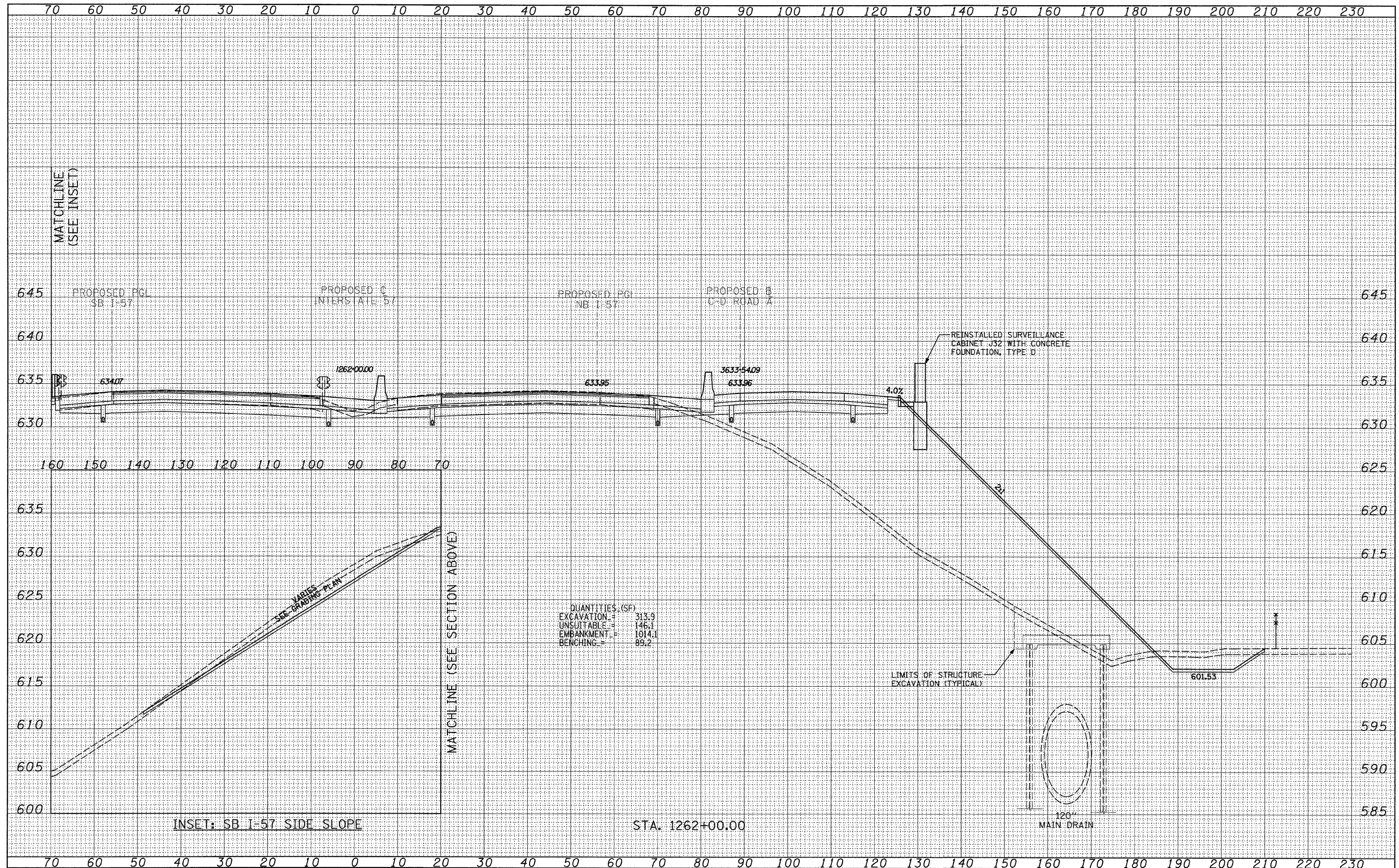


DATE	
BY	
SURVEYED	
PLOTTED	
DATE	
AREAS CHECKED	
NO.	

DATE	
BY	
SURVEYED	
PLOTTED	
DATE	
AREAS CHECKED	
NO.	



QUANTITIES (SF)

EXCAVATION	=	313.9
UNSUITABLE	=	146.1
EMBANKMENT	=	1014.1
BENCHING	=	89.2

INSET: SB I-57 SIDE SLOPE

STA. 1262+00.00

TYLIN INTERNATIONAL	USER NAME =	DESIGNED - JDF	REVISED - 4/29/2010	STATE OF ILLINOIS DEPARTMENT OF TRANSPORTATION				I-57 AT I-294 INTERCHANGE PROJECT				F.A.I. RTE.	SECTION	COUNTY	TOTAL SHEETS	SHEET NO.		
	PLOT SCALE =	DRAWN - JDF	REVISED -					PROPOSED I-57 CROSS SECTIONS				57	1414.2B	COOK	516	505		
	PLOT DATE =	CHECKED - JPM	REVISED -					SCALE: 1" = 80' V, 1" = 80' H				SHEET NO.	OF	SHEETS	STA. 1262+00.00 TO STA. 1262+00.00	CONTRACT NO. 60J27		
		DATE - 3/18/2010	REVISED -									FED. ROAD DIST. NO. [ILLINOIS] FED. AID PROJECT						

P:\602540(57-294)\Road\PI.157 BR\PI.57XS_SHT_R.dgn