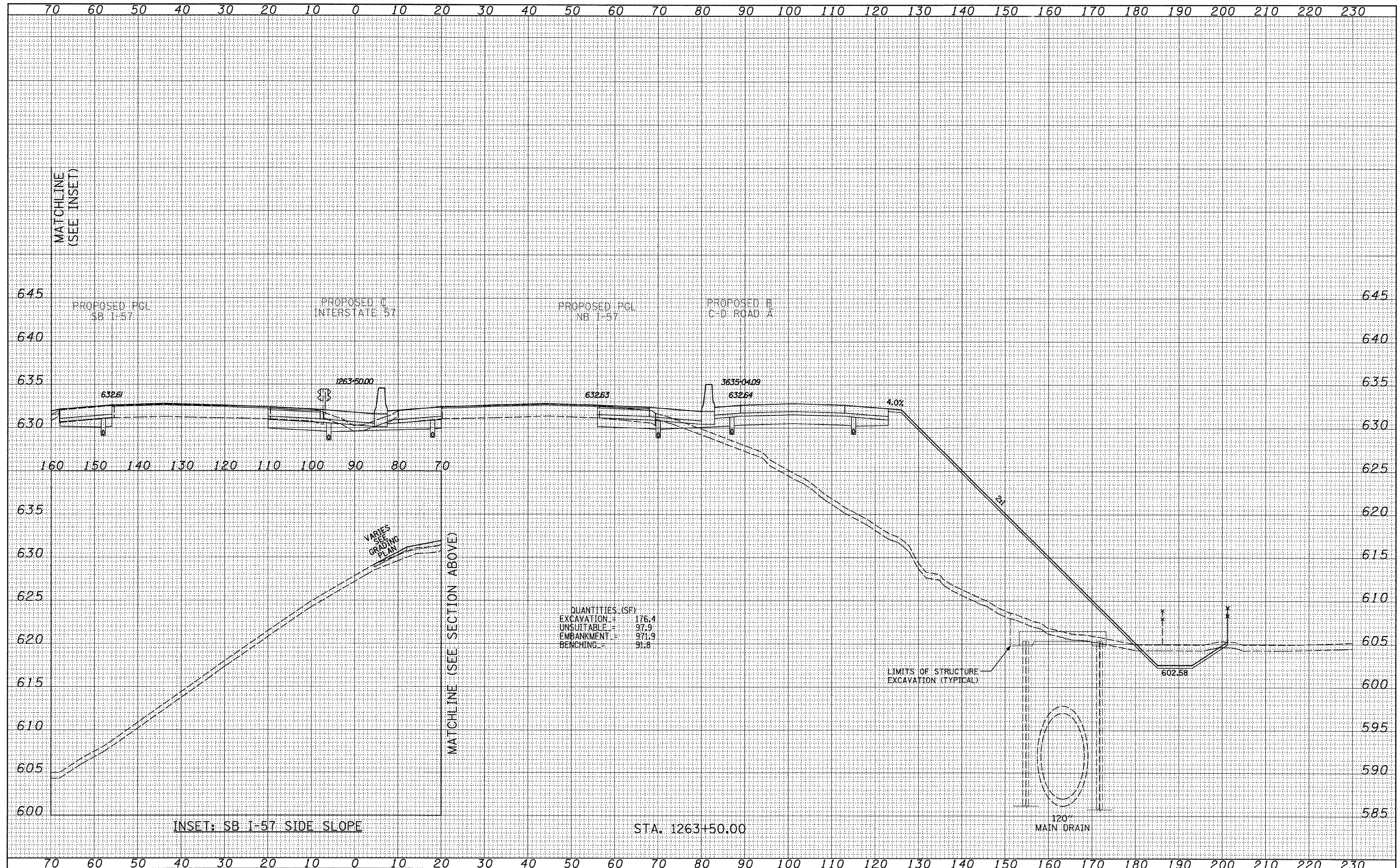


DATE	
BY	
FINAL SURVEY	
PLOTTED	
NOTE BOOK	
AREAS CHECKED	
NO.	

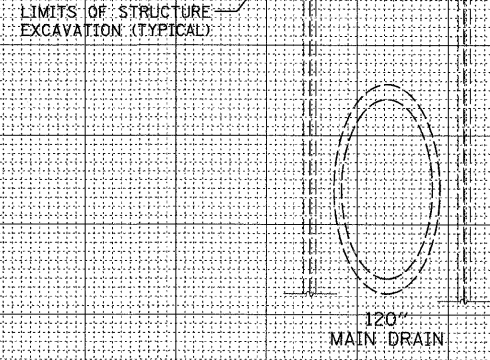
DATE	
BY	
ORIGINAL SURVEY	
PLOTTED	
NOTE BOOK	
AREAS CHECKED	
NO.	



QUANTITIES (SF)
 EXCAVATION = 176.4
 UNSUITABLE = 97.9
 EMBANKMENT = 971.9
 BENCHING = 91.8

INSET: SB I-57 SIDE SLOPE

STA. 1263+50.00



TYLIN INTERNATIONAL	USER NAME =	DESIGNED - JDF	REVISED - 4/29/2010	STATE OF ILLINOIS DEPARTMENT OF TRANSPORTATION	I-57 AT I-294 INTERCHANGE PROJECT			F.A.I. RTE.	SECTION	COUNTY	TOTAL SHEETS	SHEET NO.
	PLOT SCALE =	DRAWN - JDF	REVISED -		57	1414.2B	COOK	516	508			
	PLOT DATE =	CHECKED - JPM	REVISED -		PROPOSED I-57 CROSS SECTIONS			CONTRACT NO. 60J27				
		DATE - 3/18/2010	REVISED -		SCALE: 1" = 10' H	SHEET NO. OF SHEETS	STA. 1263+50.00 TO STA. 1263+50.00	FED. ROAD DIST. NO. ILLINOIS FED. AID PROJECT				