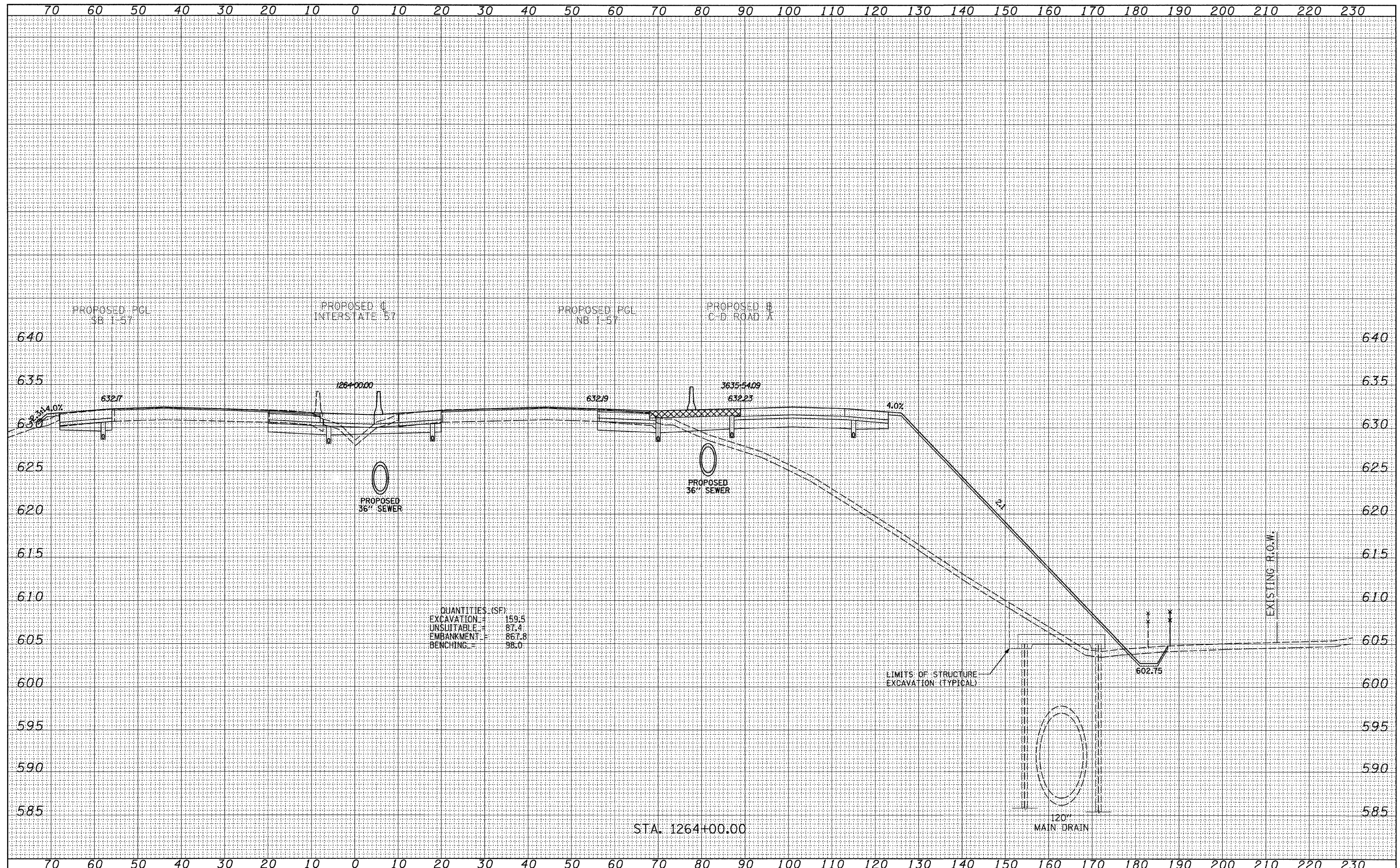


DATE	
BY	
SURVEYED	
PLOTTED	
NOTE BOOK	
AREAS CHECKED	
NO.	

DATE	
BY	
SURVEYED	
PLOTTED	
NOTE BOOK	
AREAS CHECKED	
NO.	



QUANTITIES (SF)

EXCAVATION	=	159.5
UNSUITABLE	=	87.4
EMBANKMENT	=	867.8
BENCHING	=	98.0

LIMITS OF STRUCTURE EXCAVATION (TYPICAL)

120" MAIN DRAIN

EXISTING R.O.W.

STA. 1264+00.00

TYLIN INTERNATIONAL USER NAME = PLOT SCALE = PLOT DATE =	DESIGNED - JDF	REVISED - 4/29/2010	STATE OF ILLINOIS DEPARTMENT OF TRANSPORTATION	I-57 AT I-294 INTERCHANGE PROJECT PROPOSED I-57 CROSS SECTIONS		F.A.I. RTE. 57	SECTION 1414.2B	COUNTY COOK	TOTAL SHEETS 516	SHEET NO. 509		
	DRAWN - JDF	REVISED -		SCALE: 1" = 10' H	SHEET NO. OF SHEETS	STA. 1264+00.00 TO STA. 1264+00.00	FED. ROAD DIST. NO.	ILLINOIS	FED. AID PROJECT	CONTRACT NO. 60J27		
	CHECKED - JPM	REVISED -										
	DATE - 3/18/2010	REVISED -										

P:\602540(57-294)\Road\PI_157 BR\PI_157XS_SHT_R.dgn