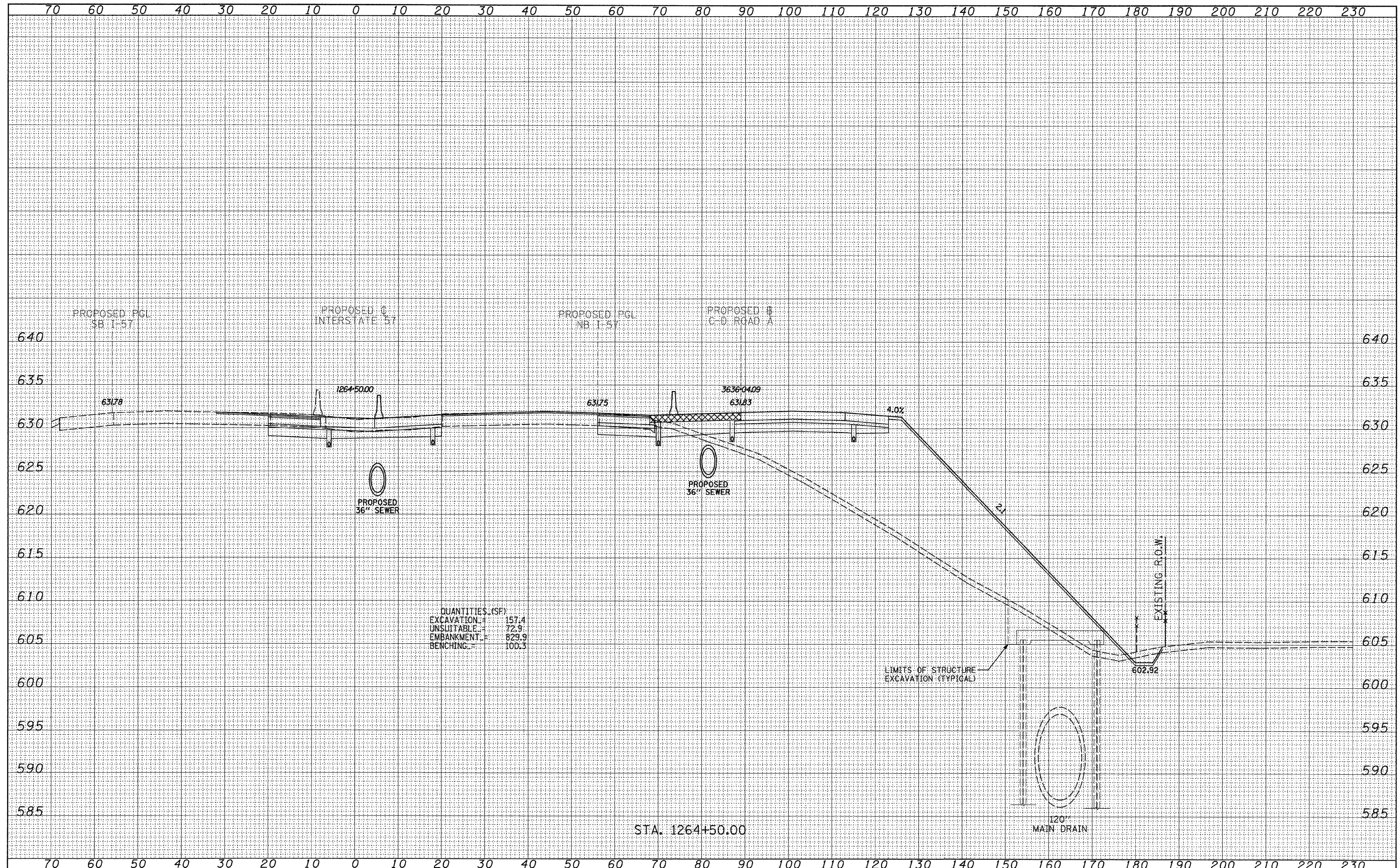


DATE	
BY	
FINAL SURVEY	
PLOTTED	
NOTE BOOK	
NO.	
AREAS CHECKED	

DATE	
BY	
ORIGINAL SURVEY	
PLOTTED	
NOTE BOOK	
NO.	
AREAS CHECKED	



QUANTITIES (SF)

EXCAVATION	157.4
UNSLITTABLE	72.9
EMBANKMENT	829.9
BENCHING	100.3

STA. 1264+50.00

LIMITS OF STRUCTURE EXCAVATION (TYPICAL)

120" MAIN DRAIN

TYLIN INTERNATIONAL	USER NAME =	DESIGNED - JDF	REVISED - 4/29/2010	STATE OF ILLINOIS DEPARTMENT OF TRANSPORTATION	I-57 AT I-294 INTERCHANGE PROJECT			F.A.I. RTE.	SECTION	COUNTY	TOTAL SHEETS	SHEET NO.
	PLDT SCALE =	DRAWN - JDF	REVISED -		57	1414.2B	COOK	516	510			
	PLDT DATE =	CHECKED - JPM	REVISED -		PROPOSED I-57 CROSS SECTIONS			CONTRACT NO. 60J27				
		DATE - 3/18/2010	REVISED -		SCALE: 1" = 10' V, 1" = 80' H	SHEET NO. OF SHEETS	STA. 1264+50.00 TO STA. 1264+50.00	FED. ROAD DIST. NO.	ILLINOIS FED. AID PROJECT			

P:\602540(57-294)\Road\PI_157 BR\PI_57XS_SHT_R.dgn