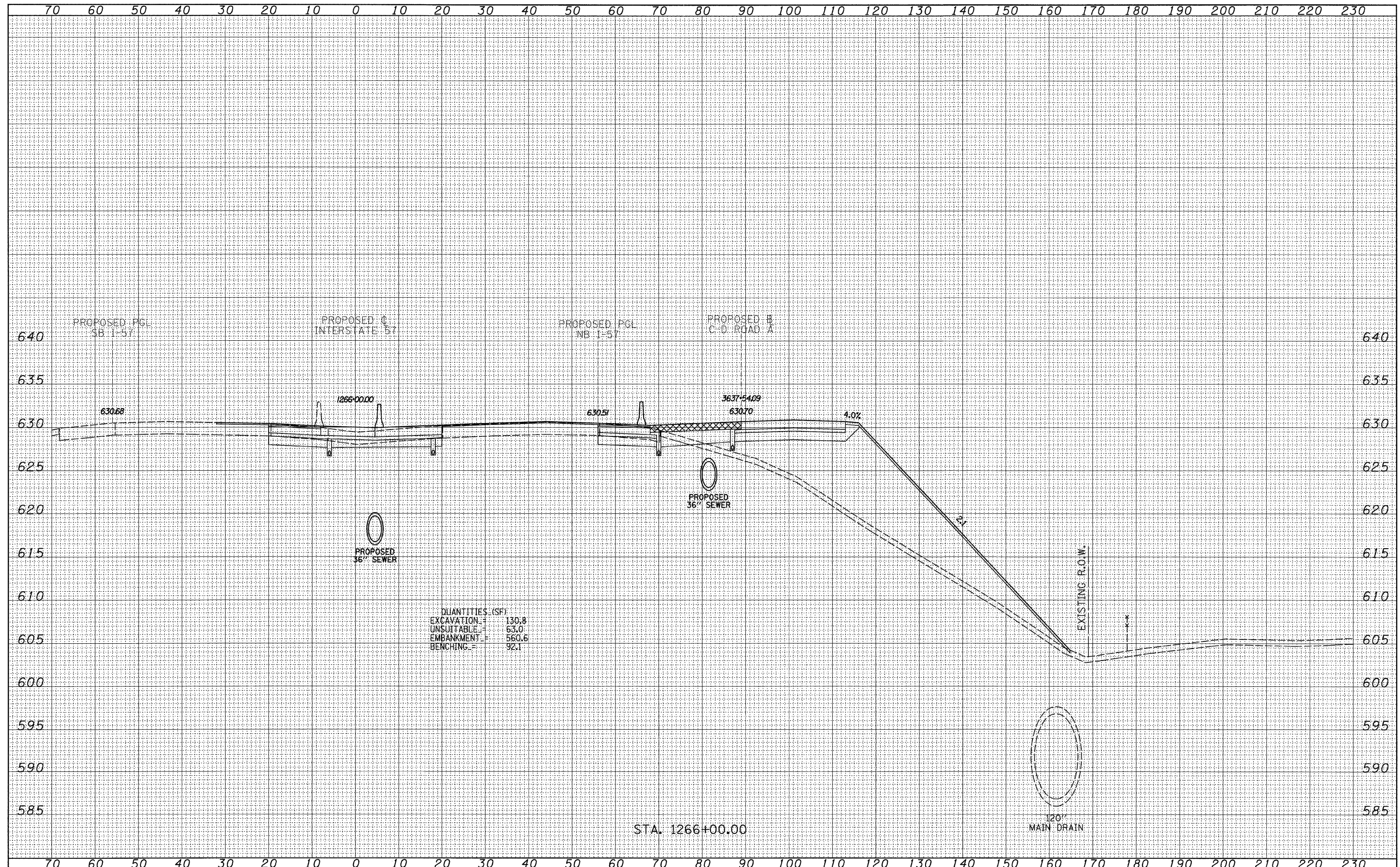


DATE	
BY	
SURVEYED	
PLOTTED	
NOTE BOOK	
AREAS CHECKED	
NO.	

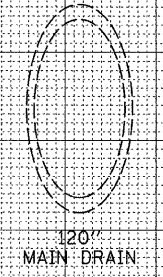
DATE	
BY	
SURVEYED	
PLOTTED	
NOTE BOOK	
AREAS CHECKED	
NO.	



QUANTITIES (SF)

EXCAVATION	=	130.8
UNSUITABLE	=	63.0
EMBANKMENT	=	560.6
BENCHING	=	92.1

STA. 1266+00.00



TYLIN INTERNATIONAL USER NAME = PLOT SCALE = PLOT DATE =	DESIGNED - JDF	REVISED - 4/29/2010	STATE OF ILLINOIS DEPARTMENT OF TRANSPORTATION		I-57 AT I-294 INTERCHANGE PROJECT PROPOSED I-57 CROSS SECTIONS				F.A.I. RTE.	SECTION	COUNTY	TOTAL SHEETS	SHEET NO.
	DRAWN - JDF	REVISED -							57	1414.2B	COOK	516	513
	CHECKED - JPM	REVISED -							CONTRACT NO. 60J27		ILLINOIS FED. AID PROJECT		
	DATE - 3/18/2010	REVISED -							STA. 1266+00.00 TO STA. 1266+00.00				

P:\602540(57-294)\Road\PI.157 BR\PI.57XS_SHT_R.dgn