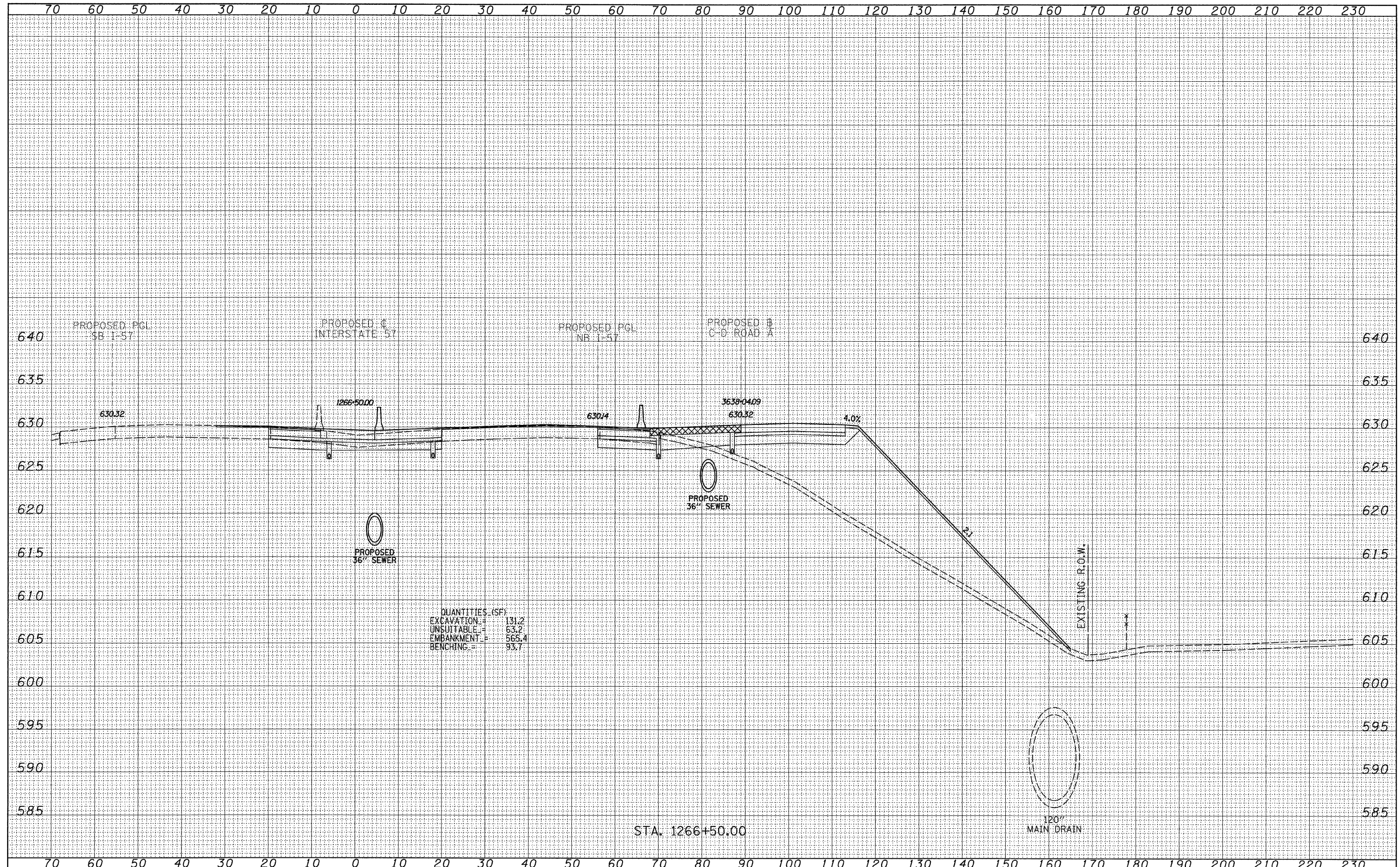


| | |
|---------------|--|
| DATE | |
| BY | |
| FINAL SURVEY | |
| SURVEYED | |
| PLOTTED | |
| NOTE BOOK | |
| AREAS CHECKED | |
| NO. | |

| | |
|-----------------|--|
| DATE | |
| BY | |
| ORIGINAL SURVEY | |
| SURVEYED | |
| PLOTTED | |
| NOTE BOOK | |
| AREAS CHECKED | |
| NO. | |



QUANTITIES (SF)
 EXCAVATION = 131.2
 UNSUITABLE = 63.2
 EMBANKMENT = 565.4
 BENCHING = 93.7

STA. 1266+50.00

120\"/>

| | | | | | | | | | | | | | |
|--|------------------|---------------------|---|--|---|---------|---------------------|-----|---------------------------|---------|--------|--------------|-----------|
| TYLIN INTERNATIONAL USER NAME = PLOT SCALE = PLOT DATE = | DESIGNED - JDF | REVISED - 4/29/2010 | STATE OF ILLINOIS DEPARTMENT OF TRANSPORTATION | | I-57 AT I-294 INTERCHANGE PROJECT PROPOSED I-57 CROSS SECTIONS | | | | F.A.I. RTE. | SECTION | COUNTY | TOTAL SHEETS | SHEET NO. |
| | DRAWN - JDF | REVISED - | | | 57 | 1414.2B | COOK | 516 | 514 | | | | |
| | CHECKED - JPM | REVISED - | | | SHEET NO. OF SHEETS | | CONTRACT NO. 60J27 | | | | | | |
| | DATE - 3/18/2010 | REVISED - | | | STA. 1266+50.00 TO STA. 1266+50.00 | | FED. ROAD DIST. NO. | | ILLINOIS FED. AID PROJECT | | | | |

P:\602540(57-294)\Road\PI_157 BR\PI_57XS_SHT_R.dgn