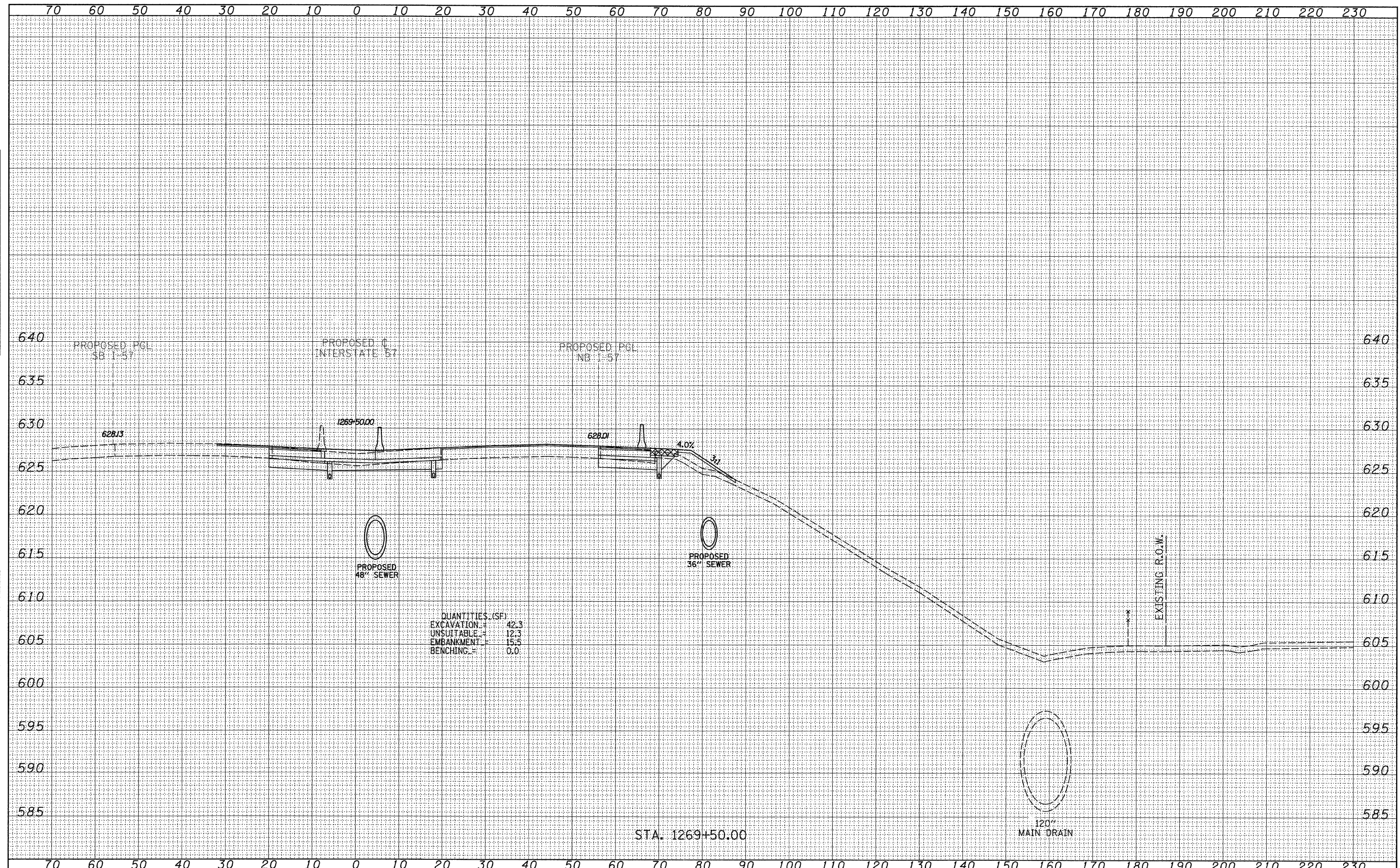


DATE	
BY	
SURVEYED	
PLOTTED	
NOTE BOOK	
AREAS CHECKED	
NO.	

DATE	
BY	
SURVEYED	
PLOTTED	
NOTE BOOK	
AREAS CHECKED	
NO.	



QUANTITIES (SF)

EXCAVATION	42.3
UNSUITABLE	12.3
EMBANKMENT	15.5
BENCHING	0.0

STA. 1269+50.00

TYLIN INTERNATIONAL	USER NAME =	DESIGNED - JDF	REVISED - 4/29/2010	STATE OF ILLINOIS DEPARTMENT OF TRANSPORTATION	I-57 AT I-294 INTERCHANGE PROJECT			F.A.I. RTE. =	SECTION	COUNTY	TOTAL SHEETS	SHEET NO.
	PLOT SCALE =	DRAWN - JDF	REVISED -		57	1414.2B	COOK	516	516D			
	PLOT DATE =	CHECKED - JPM	REVISED -		PROPOSED I-57 CROSS SECTIONS			CONTRACT NO. 60J27				
		DATE - 3/18/2010	REVISED -		SCALE: 1" = 10' H 1" = 80' V			FED. ROAD DIST. NO. ILLINOIS FED. AID PROJECT				

P:\602540(57-294)\Road\PI-157 BR\PI-57XS_SHT_R.dgn