

STATE OF ILLINOIS
DEPARTMENT OF TRANSPORTATION

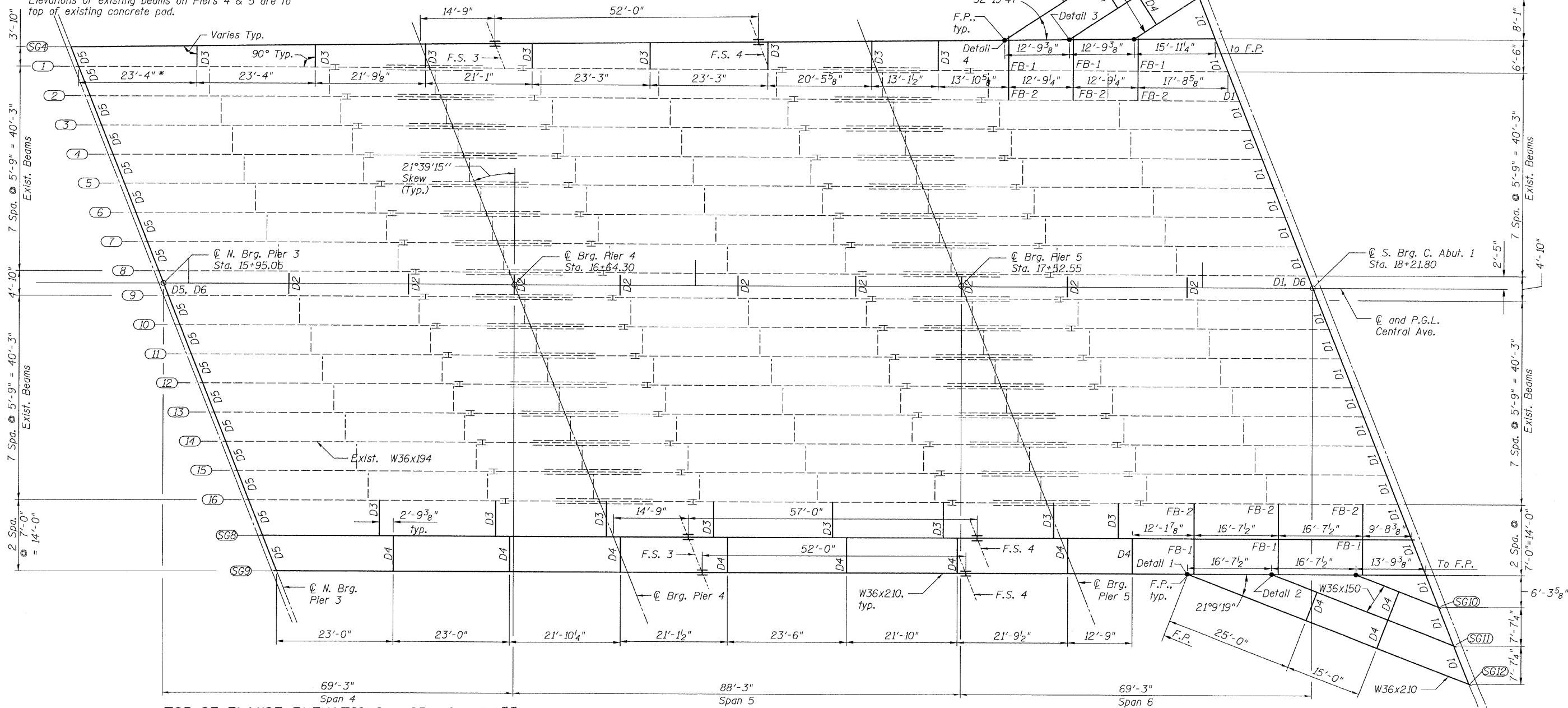
BEARING SEAT ELEVATIONS

"For Information Only"

Girder Line	℄ N. Brg. Pier 3	℄ Brg. Pier 4	℄ Brg. Pier 5	℄ S. Brg. C. Abut. 1
SG4	615.16	617.55	620.38	622.11
1	615.10	616.65	620.28	622.06
8	616.19	617.66	621.29	623.07
9	616.31	617.75	621.25	622.93
16	616.25	617.73	621.24	622.92
SG8	616.43	618.73	621.37	622.90
SG9	616.38	618.67	621.29	622.80

Elevations of existing beams on Piers 4 & 5 are to top of existing concrete pad.

* Diaphragm spacing measured along ℄ Beam 1



TOP OF FLANGE ELEVATIONS - SPANS 4,5,6**

Girder	℄ N. Brg. Pier 3	℄ Pier 4	Field Splice 3	Field Splice 4	℄ Pier 5	℄ S. Brg. C. Abut. 1
SG4	618.80	621.07	621.57	623.17	623.72	625.55
SG8	620.07	622.26	622.73	624.31	624.70	626.34
SG9	620.02	622.20	622.66	624.24	624.62	626.25

Girder	F.P.	℄ S. Brg. C. Abut. 1
SG5	625.13	625.31
SG6	624.78	625.11
SG7	624.42	624.92

Girder	F.P.	℄ S. Brg. C. Abut. 1
SG10	625.91	626.16
SG11	625.53	626.05
SG12	625.14	625.95

FRAMING PLAN

NOTES:

- For General Notes, see Sheet 2.
- For Details 1-4, see Sheets 20 & 21.
- F.P. denotes Framing Point

**FRAMING PLAN -
SPANS 4, 5 & 6
STRUCTURE NO. 016-3241**

TYLIN INTERNATIONAL

DESIGNED - PK
CHECKED - AMD,
DRAWN - PK
CHECKED - AMD,
DATE - 08/02/10

REVISIONS	
NAME	DATE

SHEET NO. 14 26 SHEETS	F.A.I. RTE.	SECTION	COUNTY	TOTAL SHEETS	SHEET NO.
	55	0711.2R & 1011.1BR	COOK	200	18
CONTRACT NO. 60L39					
FED. ROAD DIST. NO. 1 ILLINOIS FED. AID PROJECT					

2:41:44 PM
p:\01345\beam and bearing fabrication\55of1Frameplan2.dgn
8/2/2010