

STATE OF ILLINOIS
DEPARTMENT OF TRANSPORTATION

FRAMING PLAN - RAMP 3 FLARE

| | G3.12 PC | Q Brg. Abutment | Q Crosshead | Q Carrier Girder G1 |
|----------------|------------------------------------|-----------------|-------------------------------------|---------------------------------------|
| X ₃ | -6 ¹⁵ / ₁₆ " | 0'-0" | 77'-4 ³ / ₈ " | 130'-0 ⁵ / ₁₆ " |
| Y ₃ | 58'-5" | 58'-5" | 40'-2 ³ / ₈ " | 0'-0" |

NOTES:

1. Work this sheet with sheet 40 & sheets 94 thru 112.
2. Structural steel for beams, girders, splice plates, and connection plates shall conform to the requirement of AASHTO M270 GR 50. All other steel shall conform to the requirements of AASHTO M250 GR 36.
3. F.S. denotes field splice.
4. FB denotes floor beam.

MEMBER SIZE

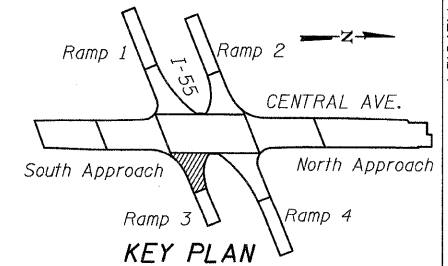
| Girder | Size |
|------------------|---------------------------|
| G3.1 | W36x231 |
| G3.2 | |
| G3.3 | |
| G3.4 | |
| G3.5 | |
| G3.6 | |
| G3.7 | |
| G3.8 | W36x231 |
| G3.9 | 54" I ^e Girder |
| G3.10 | W36x150 |
| G3.10A | W36x150 |
| G3.11 | W36x231 |
| G3.12 | 54" I ^e Girder |
| G3.13 | W36x150 |
| G3.14 | |
| G3.15 | |
| G3.16 | |
| G3.17 | |
| G3.18 | W36x231 |
| G3.19 | W36x231 |
| G3.20 | W36x231 |
| FB3.1 thru FB3.7 | W36x231 |
| FB3.8 | W24x76 |

ANGLE "A"

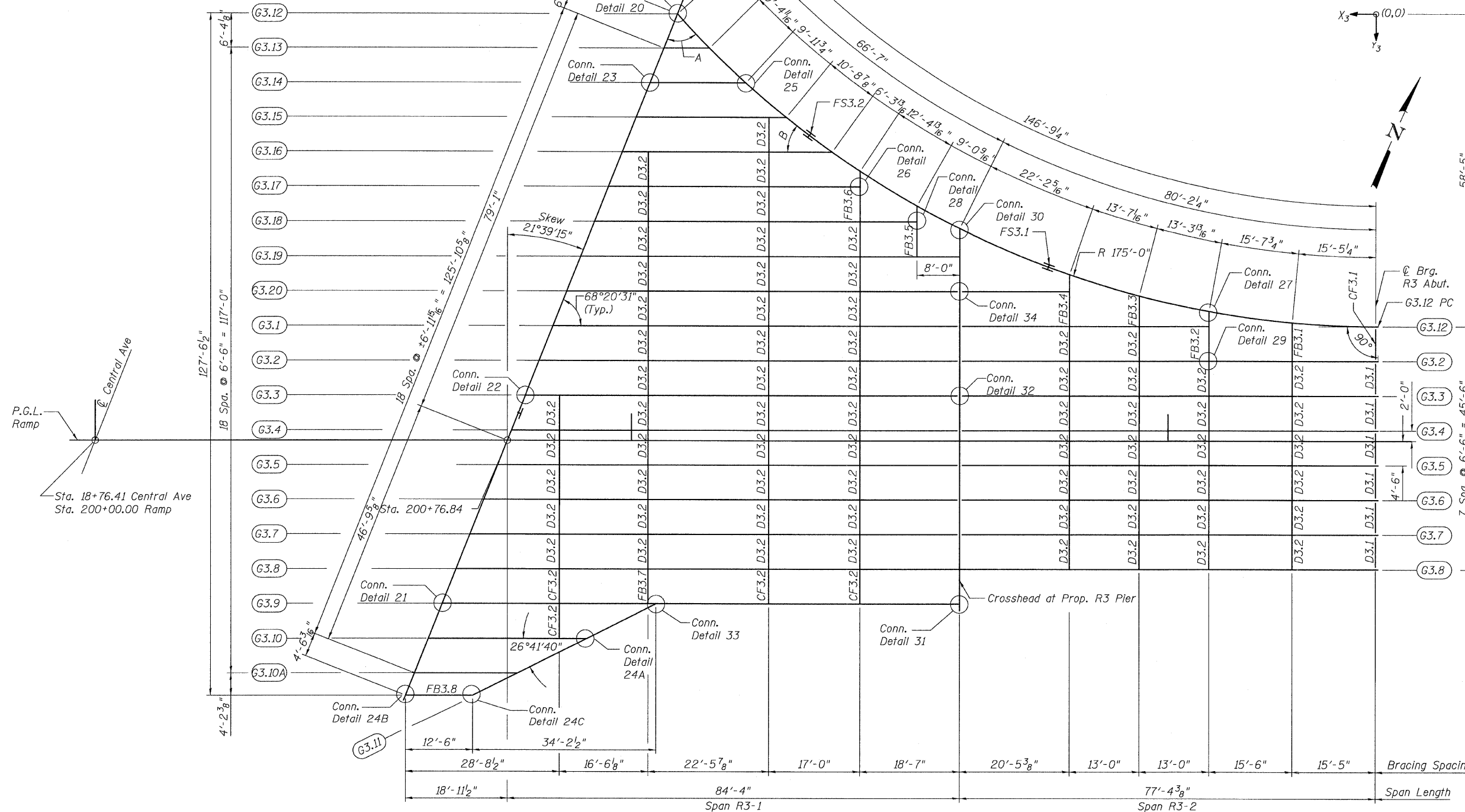
| Girder | Carrier Girder | A |
|-----------|----------------|-----------|
| FB-3.6 | | 63°25'14" |
| FB-3.5 | | 56°35'41" |
| FB-3.4 | | 60°39'14" |
| Crosshead | | 63°36'30" |
| FB-3.4 | | 70°52'53" |
| FB-3.3 | | 75°19'51" |
| FB-3.2 | | 79°41'29" |
| FB-3.1 | | 84°48'52" |

ANGLE "B"

| Girder | B |
|--------|-----------|
| G3.13 | 45°20'28" |
| G3.14 | 42°16'0" |
| G3.15 | 38°59'55" |
| G3.16 | 35°28'54" |



FRAMING PLAN
RAMP 3 FLARE
STRUCTURE NO. 016-0724



TYLIN INTERNATIONAL

| DESIGNED | JPN | REVISIONS | |
|----------|----------|-----------|------|
| CHECKED | AMD, | NAME | DATE |
| DRAWN | MAU | | |
| CHECKED | AMD, | | |
| DATE | 08/02/10 | | |

| | | | | | |
|--------------------------------|-------------|--------------------|------------------|--------------|-----------|
| SHEET NO. 43 137 SHEETS | F.A.I. RTE. | SECTION | COUNTY | TOTAL SHEETS | SHEET NO. |
| | 55 | 0711.2R & 1011.1BR | COOK | 200 | 73 |
| FED. ROAD DIST. NO. 1 ILLINOIS | | | FED. AID PROJECT | | |
| CONTRACT NO. 60L39 | | | | | |

8/5/2010 6:24:05 PM p:\01345\beam_and_bearing_fabrication\55f3f-frame.dgn