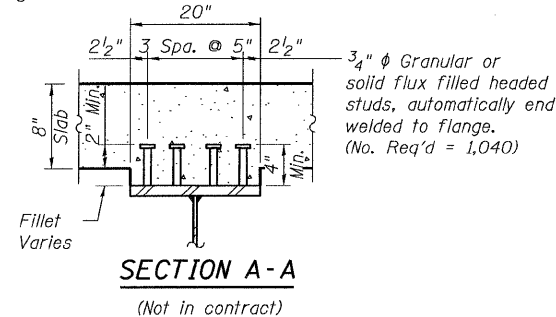
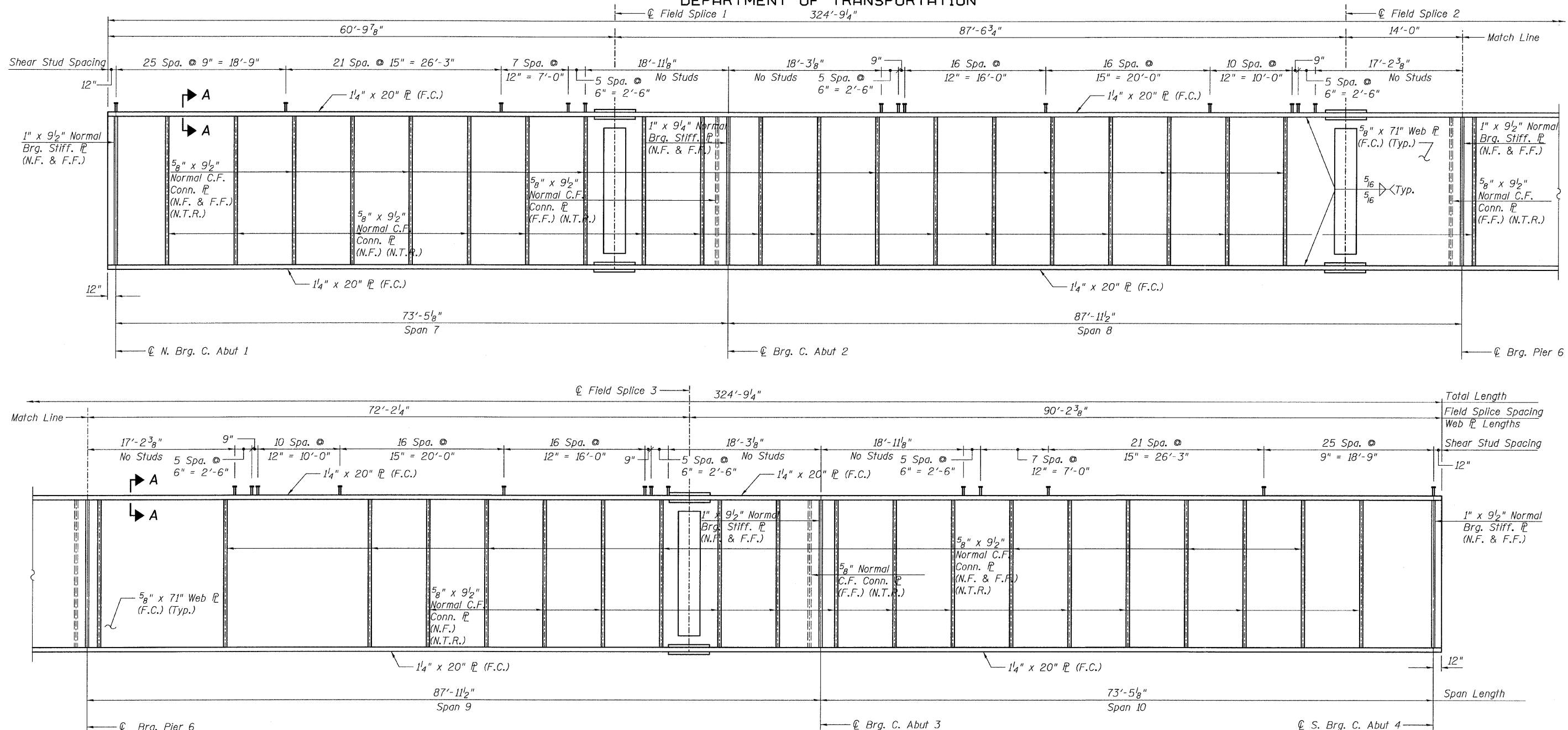


STATE OF ILLINOIS
DEPARTMENT OF TRANSPORTATION



GIRDER G2 - ELEVATION (F.C.M.)
(Looking West)

- NOTES:**
- All Steel shown on this sheet shall be AASHTO M 270 GR 50.
 - For Top of Web Elevations, see Sheet 40.
 - For Bearing stiffener, and connection plate details, see sheet 53.
 - For Field Splice detail, See sheet 52.
 - F.C.M. denotes Fracture Critical Member
 - F.C. denotes Fracture Critical Material, AASHTO Zone II
 - N.F. denotes Near Face
 - F.F. denotes Far Face
 - Girder G2 shall not be cambered.
 - Load carrying components designated "NTR" shall conform to the supplemental requirements for Notch Toughness, Zone 2.

GIRDER G2 - ELEVATION
CENTRAL/I-55
STRUCTURE NO. 016-0724

TYLIN INTERNATIONAL	DESIGNED - JMA	REVISIONS		SHEET NO. 48	F.A.I RTE. 55	SECTION 0711.2R & 1011.1BR	COUNTY COOK	TOTAL SHEETS 200	SHEET NO. 78	
	CHECKED - AMD,	NAME	DATE							CONTRACT NO. 60L39
	DRAWN - JMA									
	CHECKED - AMD,									
	DATE - 08/02/10									
				137 SHEETS		FED. ROAD DIST. NO. 1		ILLINOIS FED. AID PROJECT		

8/13/2010 4:32:52 PM p:\0345\beam and bearing fabrication\155c2beam02.dwg