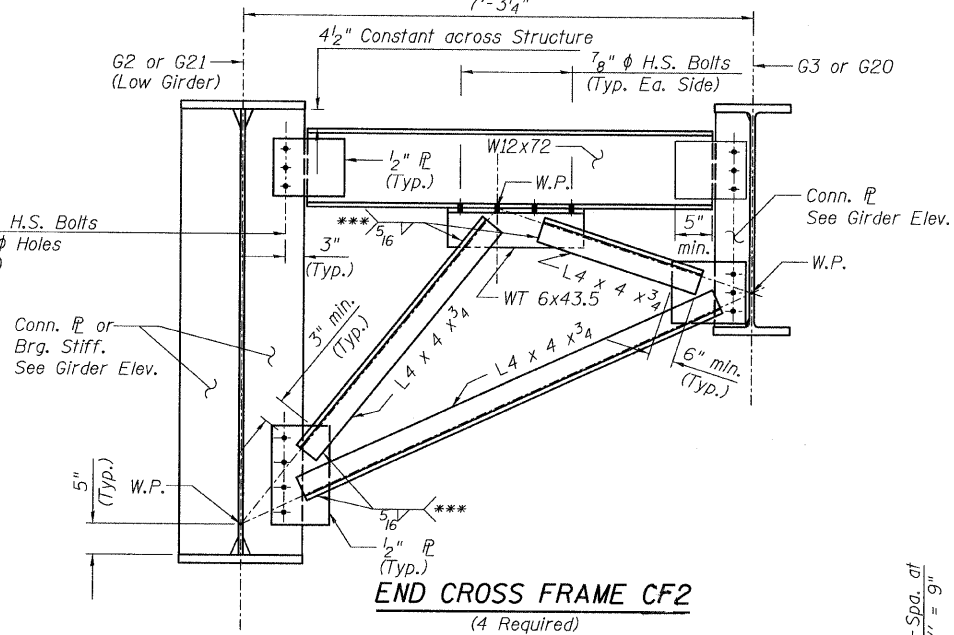
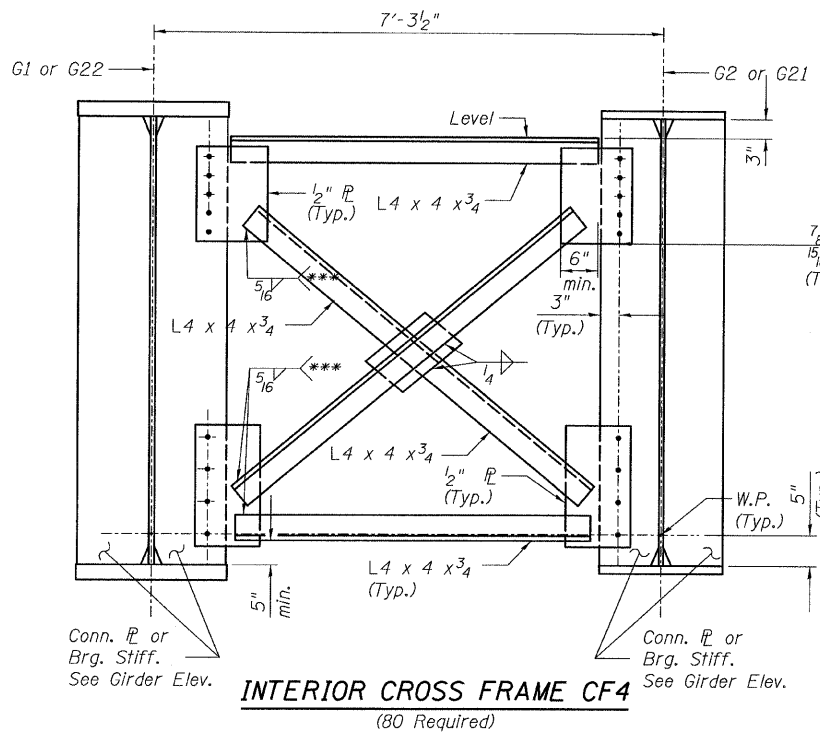
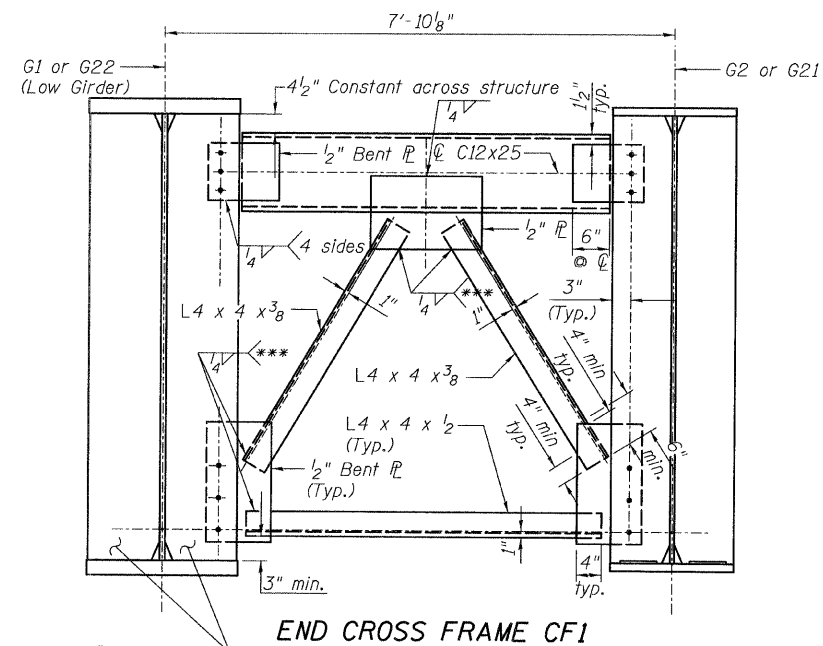


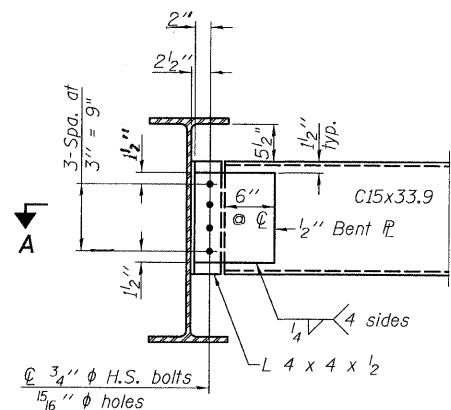
STATE OF ILLINOIS
DEPARTMENT OF TRANSPORTATION



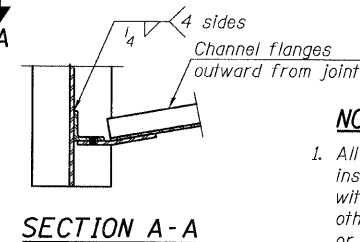
*** Fillet weld angle along 3 sides on one face of gusset plate.



Note: Place Cross Frame with channel flanges and outstanding angle legs outward from joint. Weld on near side for 1/2" plate.

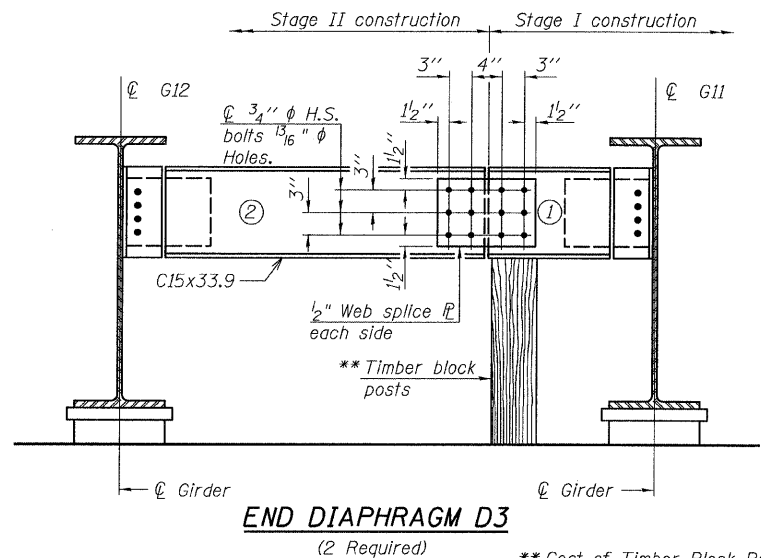


Note: Two hardened washers required for each set of oversized holes.



NOTES:

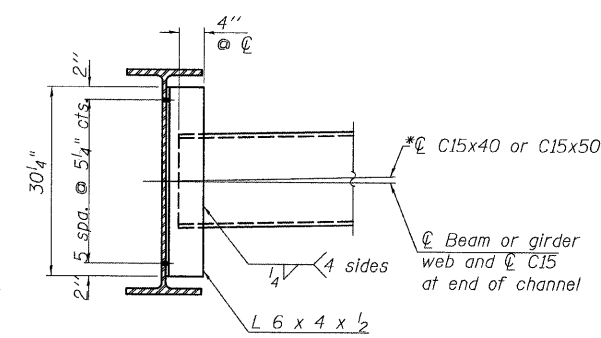
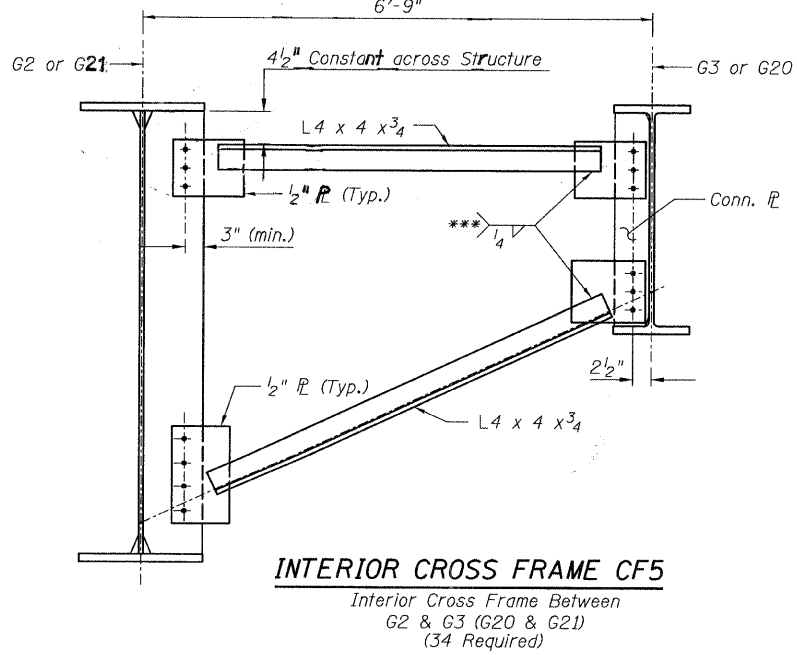
- All cross frames or diaphragms shall be installed as steel is erected and secured with erection pins and bolts except as otherwise noted. Individual cross frames or diaphragms at supports may be temporarily disconnected to install bearing anchor rods.



** Cost of Timber Block Posts is included with Erecting Structural Steel.

END DIAPHRAGM STAGE CONSTRUCTION SEQUENCE

- Order diaphragm in two sections.
- Attach section ① of diaphragm to Beam G11.
- Place timber block posts between section ① of diaphragm and abutment bearing section.
- Attach section ② of diaphragm to both Beam G12 and section ① of diaphragm during stage II construction with splice plates.
- Remove timber block posts.



Note: Two hardened washers required for each set of oversized holes. *Alternate channels are permitted to facilitate material acquisition. Calculated weight of structural steel is based on the lighter section. The alternate, if utilized, shall be provided at no additional cost to the Department.

CROSS FRAMES & DIAPH. CENTRAL/I-55 STRUCTURE NO. 016-0724

TYLIN INTERNATIONAL

DESIGNED - JMA	REVISIONS	
	NAME	DATE
CHECKED - AMD,		
DRAWN - JMA		
CHECKED - AMD,		
DATE - 08/02/10		

SHEET NO. 54 137 SHEETS	F.A.I. RTE.	SECTION	COUNTY	TOTAL SHEETS	SHEET NO.
	55	0711.2R & 1011.1BR	COOK	200	84
CONTRACT NO. 60L39					
FED. ROAD DIST. NO. 1 ILLINOIS FED. AID PROJECT					

2:23:33 PM

es:\01345\beam and bearing fabrication\155c21\amedt13.dwg

8/2/2010