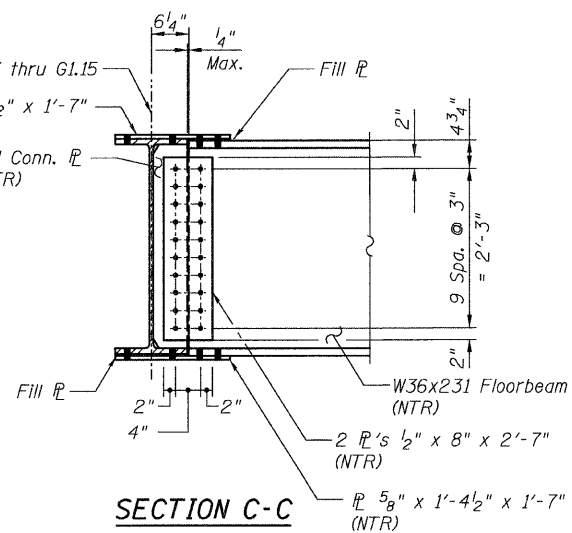
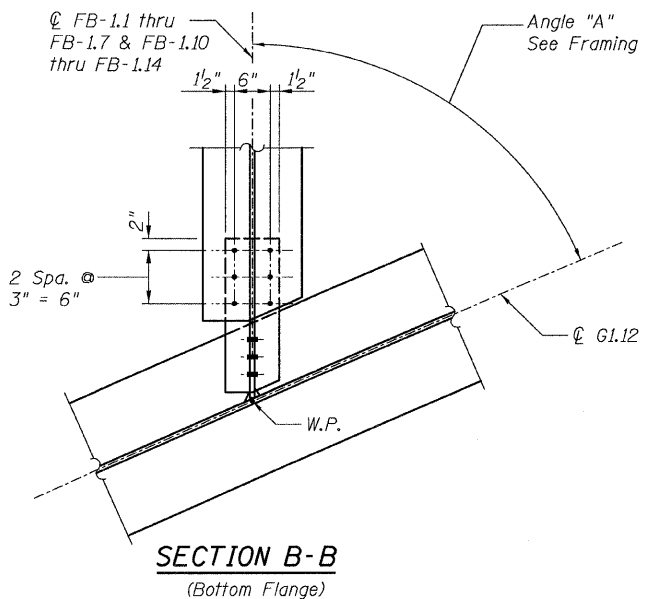
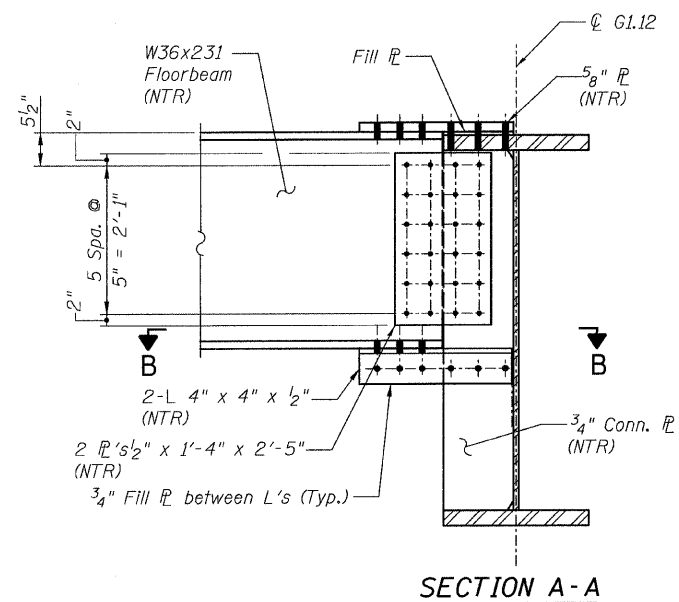
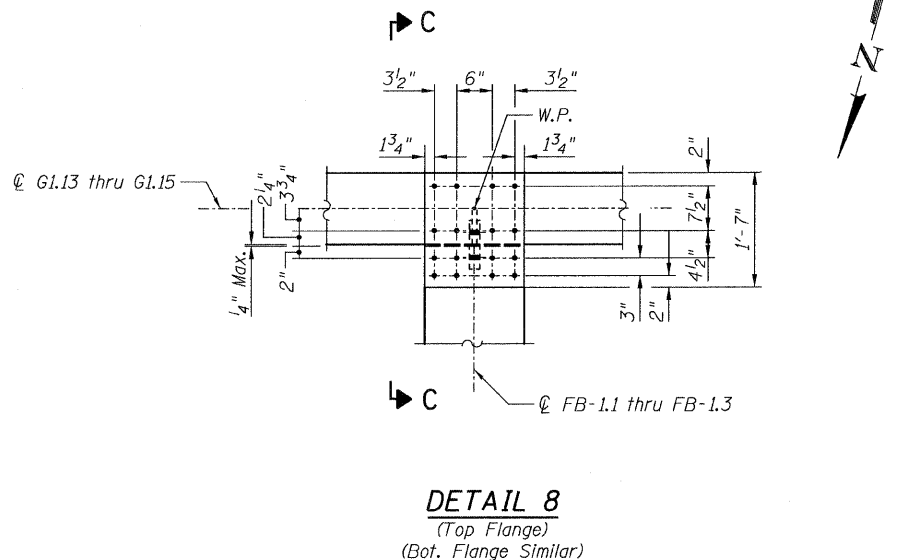
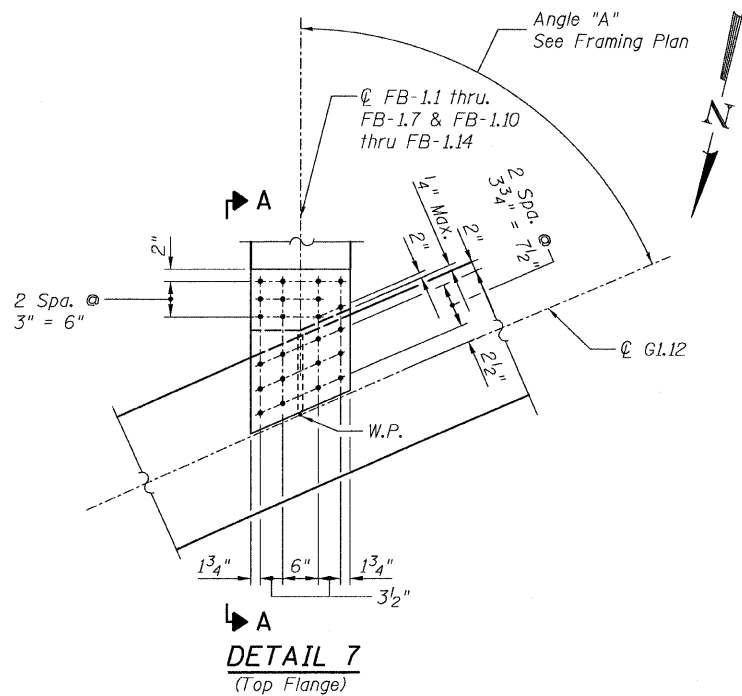


STATE OF ILLINOIS  
DEPARTMENT OF TRANSPORTATION



- NOTES:**
- All steel shall be AASHTO M270 Grade 50.
  - For Details 7 and 8 locations, see Sheet 41.
  - Load carrying components designated "NTR" shall conform to the Supplemental Requirements for Notch Toughness, Zone 2.
  - CJP Weld - denotes Complete Joint Penetration Weld.

**CONNECTION DETAILS 7&8**  
**RAMP 1 FLARE**  
**STRUCTURE NO. 016-0724**

<b>TYLIN INTERNATIONAL</b>	DESIGNED - EKH, JMA	REVISIONS		SHEET NO. 68	F.A.I RTE.	SECTION	COUNTY	TOTAL SHEETS	SHEET NO.										
	CHECKED - AMD,	NAME	DATE							137 SHEETS	55	0711.2R & 1011.1BR	COOK	200	98				
	DRAWN - EKH, JMA															CONTRACT NO. 60L39			
	CHECKED - AMD,															FED. ROAD DIST. NO. 1 ILLINOIS FED. AID PROJECT			
DATE - 08/02/10																			

8/13/2010 4:41:54 PM p:\01315\beam and bearing fabrication\155fframed\14.dgn