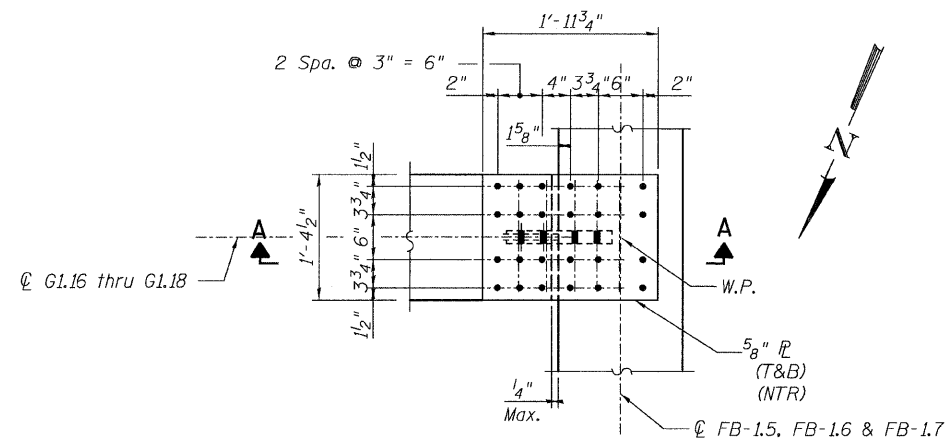
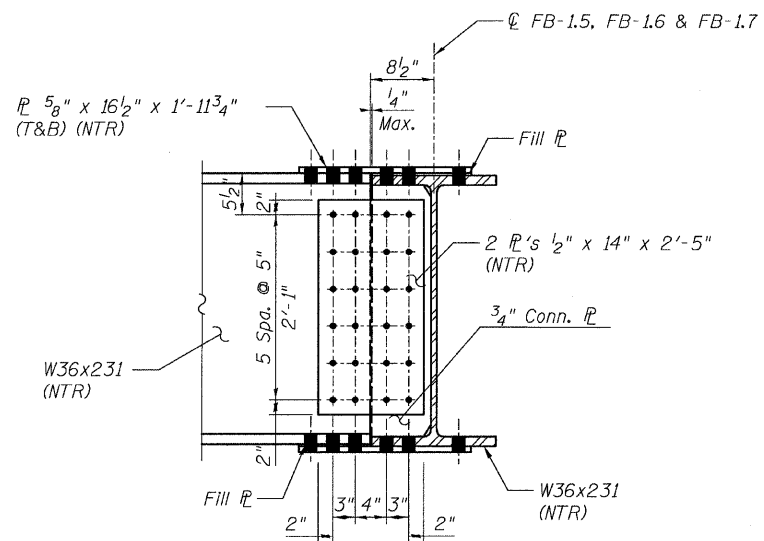


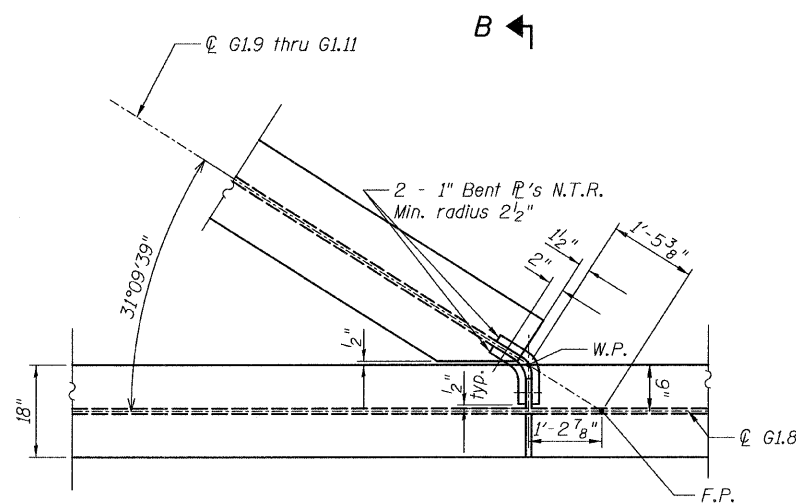
STATE OF ILLINOIS
DEPARTMENT OF TRANSPORTATION



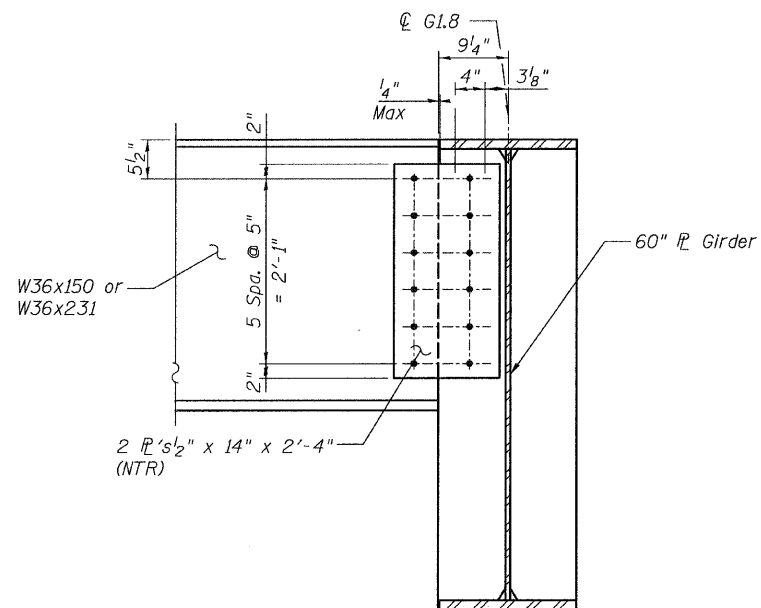
DETAIL 11
(Top Flange)
(Bottom flange is similar.)



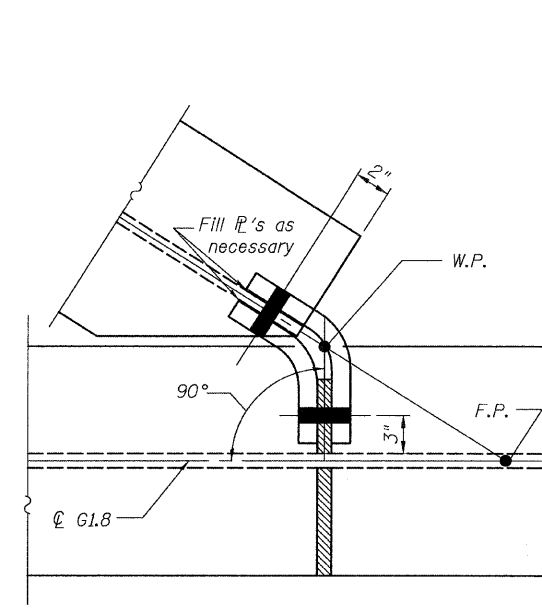
SECTION A-A



DETAIL 12



SECTION B-B



PLAN-FRAMED CONNECTION

NOTES:

1. All steel shall be AASHTO M270 Grade 50.
2. For Details 11 and 12 locations, see Sheet 41.
3. F.C. - denotes Fracture Critical Material, AASHTO Zone II.
4. Load carrying components designated "NTR" shall conform to the Supplemental Requirements for Notch Toughness, Zone 2.

**CONNECTION DETAILS 11&12
RAMP 1 FLARE
STRUCTURE NO. 016-0724**

TYLIN INTERNATIONAL	DESIGNED - EKH, JMA	REVISIONS	
	CHECKED - AMD,	NAME	DATE
	DRAWN - EKH, JMA		
	CHECKED - AMD,		
	DATE - 08/02/10		

SHEET NO. 70 137 SHEETS	F.A.I. RTE.	SECTION	COUNTY	TOTAL SHEETS	SHEET NO.
	55	0711.2R & 1011.1BR	COOK	200	100
			CONTRACT NO. 60L39		
FED. ROAD DIST. NO. 1			ILLINOIS	FED. AID PROJECT	