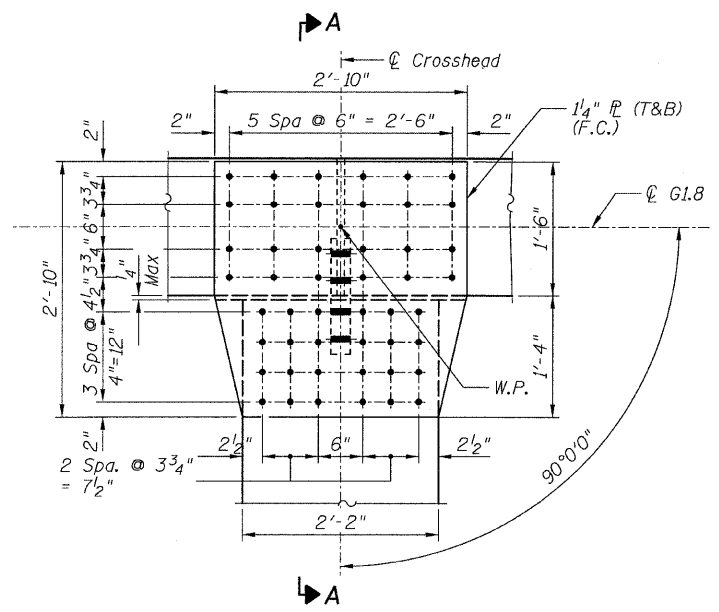
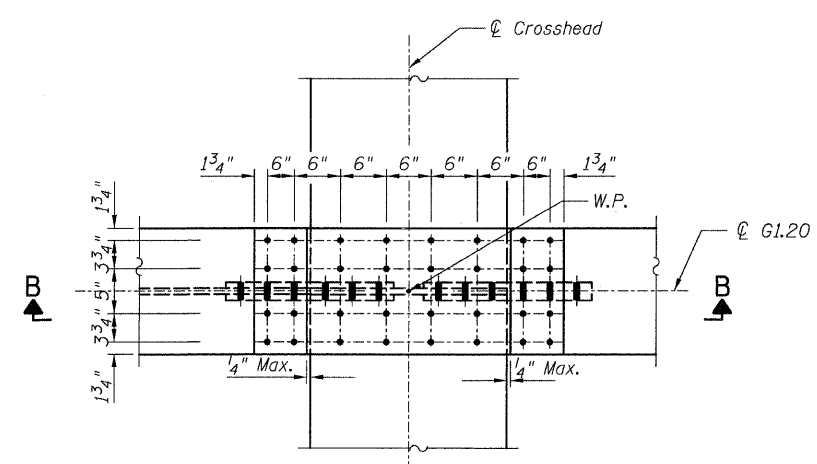


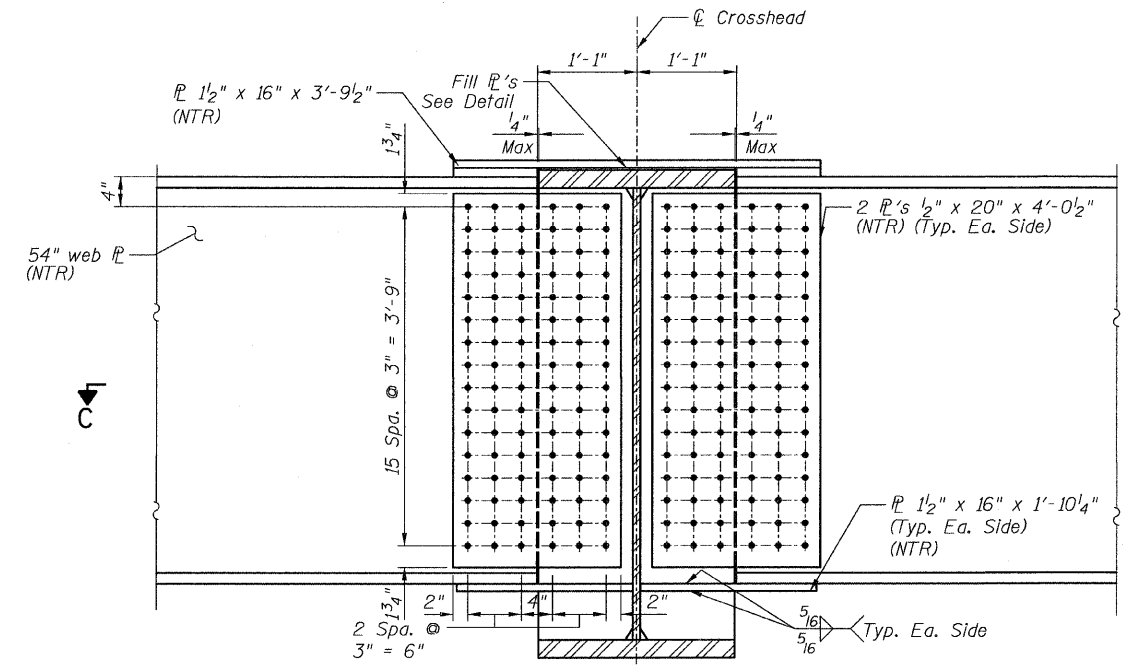
STATE OF ILLINOIS
DEPARTMENT OF TRANSPORTATION



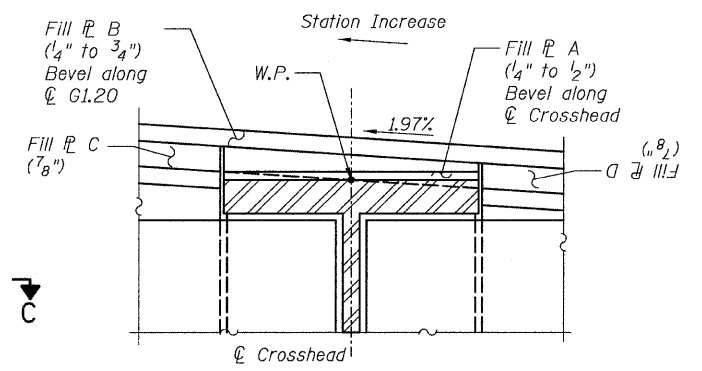
DETAIL 15
(Top Flange)
(Bot. Flange Similar)



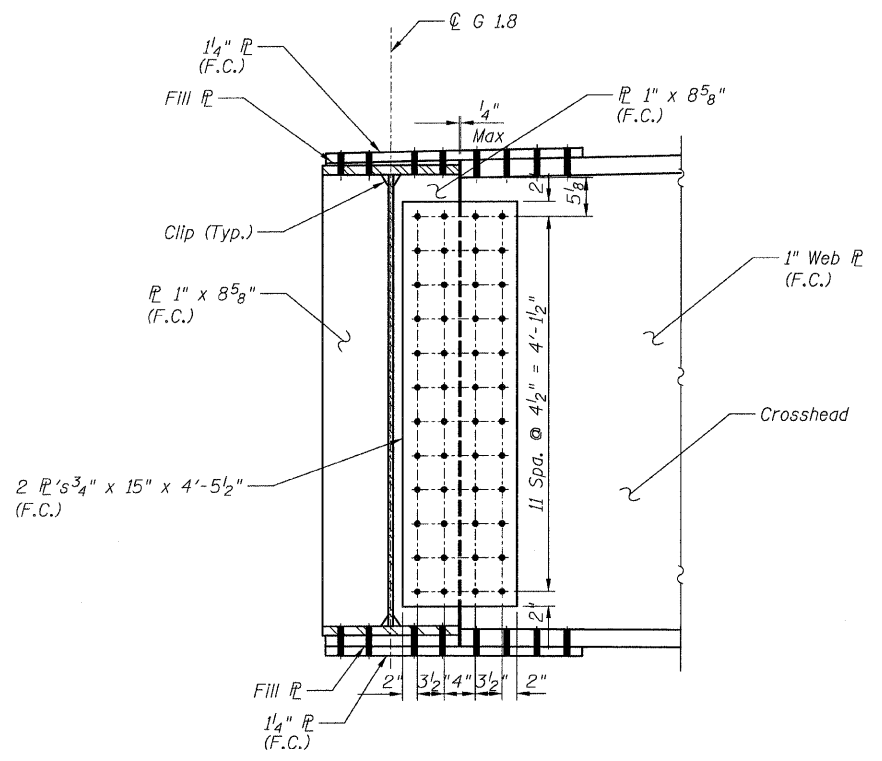
DETAIL 16
(Top Flange)



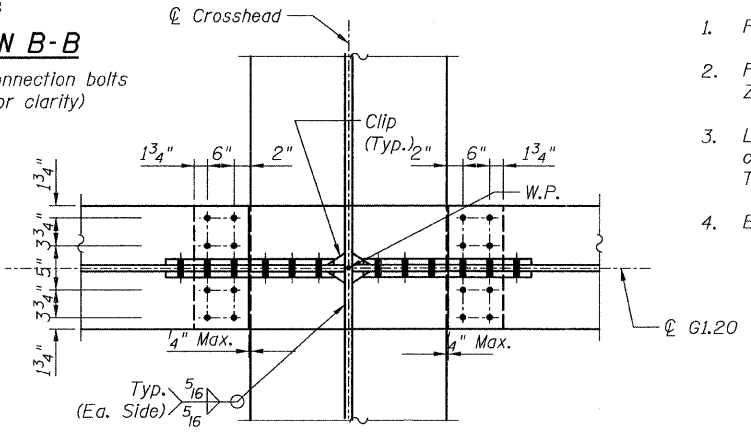
SECTION B-B
(Top & bottom connection bolts not shown for clarity)



FILL P DETAIL



SECTION A-A



SECTION C-C

NOTES:

1. For Details 15 and 16 locations, see Sheet 41.
2. F.C. - denotes Fracture Critical Material, AASHTO Zone II.
3. Load carrying components designated "NTR" shall conform to the Supplemental Requirements for Notch Toughness, Zone 2.
4. Bolts for connection detail 15 shall be 1" φ with 1/16" holes.

CONNECTION DETAILS 15&16
RAMP 1 FLARE
STRUCTURE NO. 016-0724

TYLIN INTERNATIONAL

DESIGNED -	EKH, JMA	REVISIONS	
CHECKED -	AMD,	NAME	DATE
DRAWN -	EKH, JMA		
CHECKED -	AMD,		
DATE -	08/02/10		

SHEET NO. 72	F.A.I. RTE. 55	SECTION 0711.2R & 1011.1BR	COUNTY COOK	TOTAL SHEETS 200	SHEET NO. 102
137 SHEETS			CONTRACT NO. 60L39		
FED. ROAD DIST. NO. 1 ILLINOIS FED. AID PROJECT					

p:\01345\beam and bearing fabrication\55fframed118.dgn 8/13/2010 5:55:02 PM