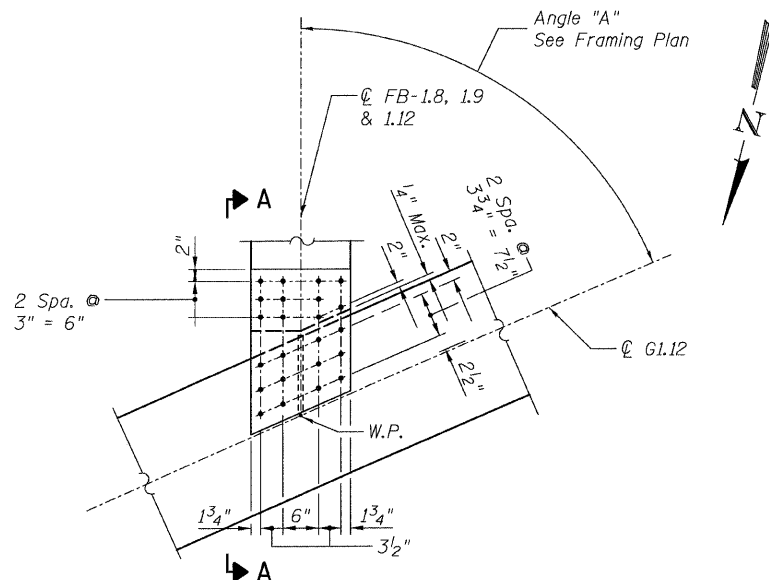
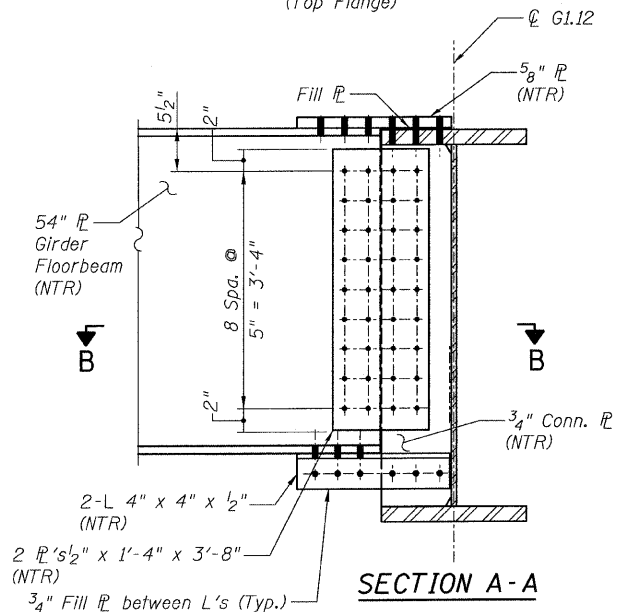


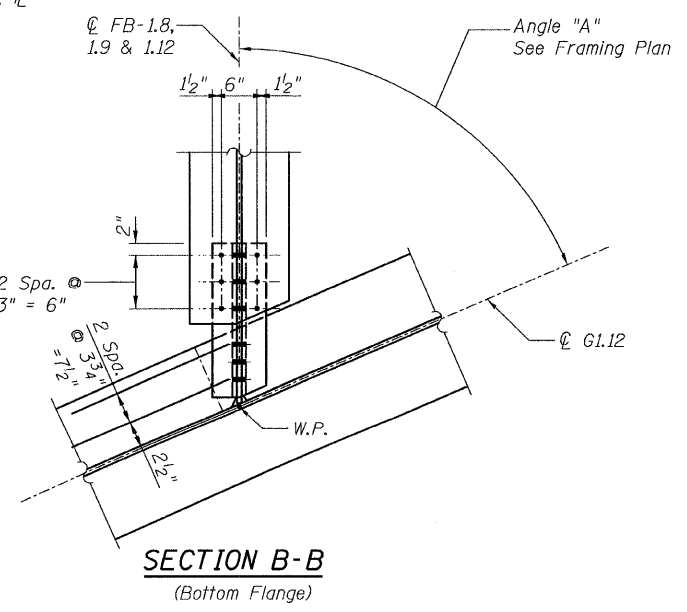
STATE OF ILLINOIS
DEPARTMENT OF TRANSPORTATION



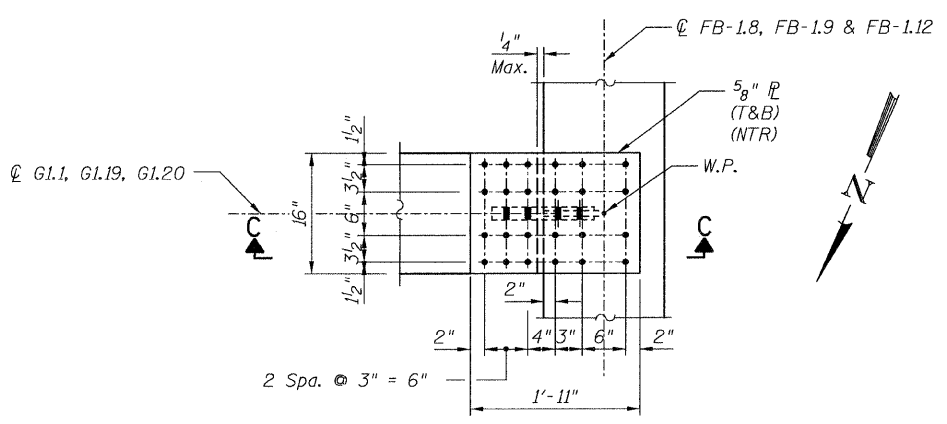
DETAIL 17
(Top Flange)



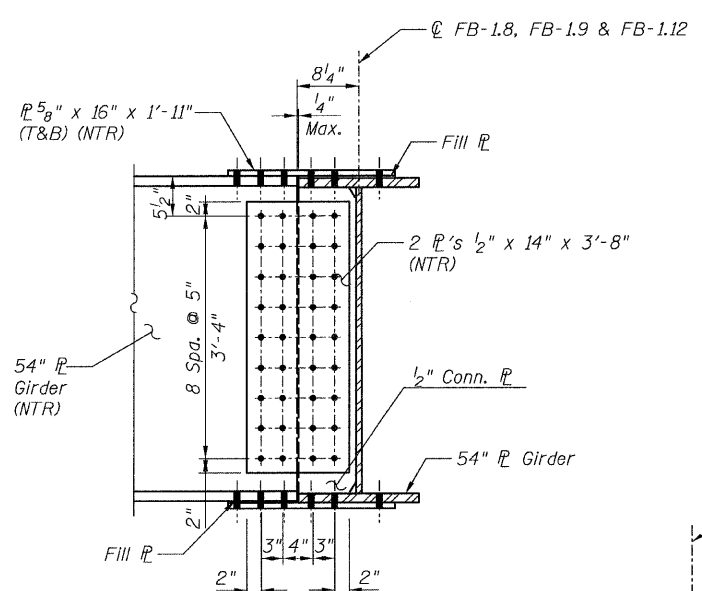
SECTION A-A



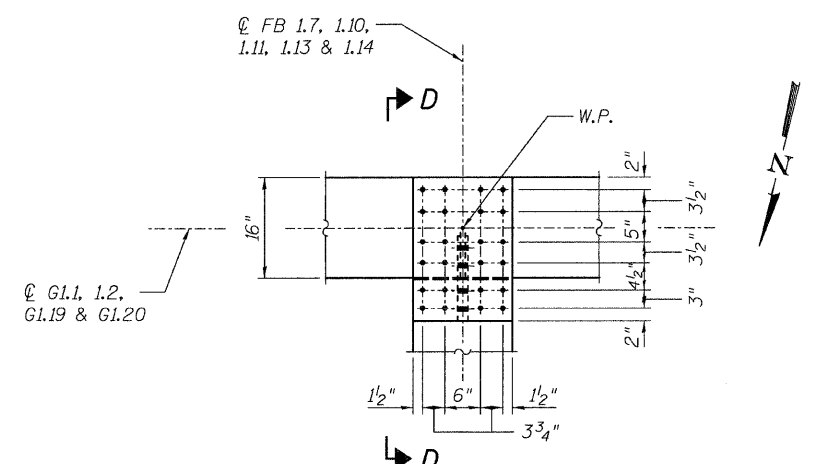
SECTION B-B
(Bottom Flange)



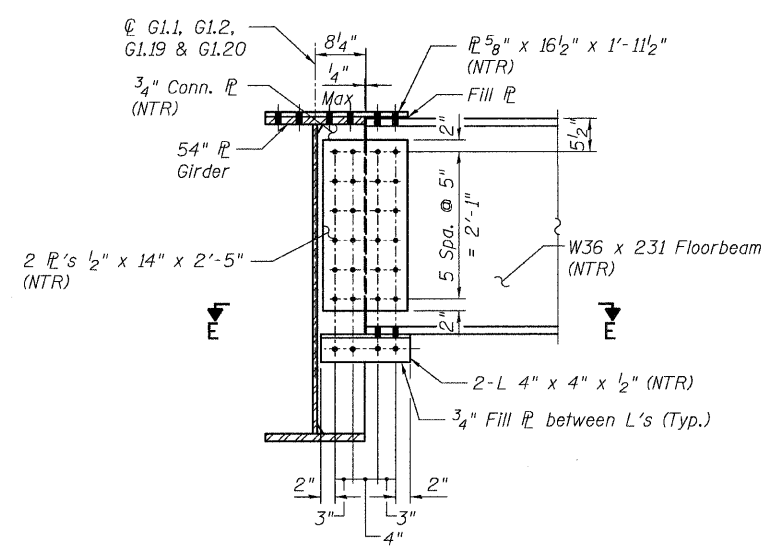
DETAIL 18
(Top Flange)
(Bottom Flange is similar.)



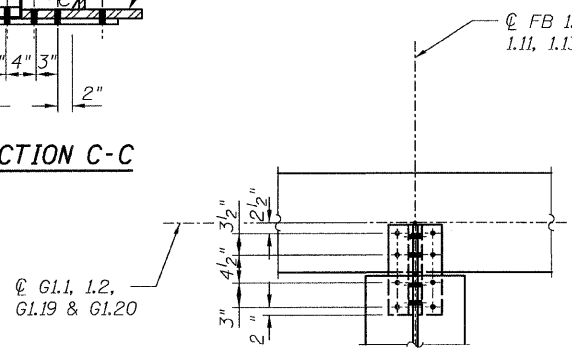
SECTION C-C



DETAIL 19
(Top Flange)



SECTION D-D



SECTION E-E

- NOTES:**
- All steel shall be AASHTO M270 Grade 50.
 - For Details 17, 18 & 19 locations, see Sheet 41.
 - Load carrying components designated "NTR" shall conform to the Supplemental Requirements for Notch Toughness, Zone 2.

CONNECTION DETAILS 17, 18 & 19
RAMP 1 FLARE
STRUCTURE NO. 016-0724

TYLIN INTERNATIONAL	DESIGNED - EKH, JMA	REVISIONS		SHEET NO. 72A 137 SHEETS	F.A.I RTE. 55	SECTION 0711.2R & 1011.1BR	COUNTY COOK	TOTAL SHEETS 200	SHEET NO. 102A	
	CHECKED - AMD,	NAME	DATE							CONTRACT NO. 60L39
	DRAWN - EKH, JMA									
	CHECKED - AMD,									
	DATE - 08/02/10									
					FED. ROAD DIST. NO. 1 ILLINOIS FED. AID PROJECT					

p:\01345\beam and bearing fabrication\155fiframedtl18.dgn 8/13/2010 4:41:58 PM