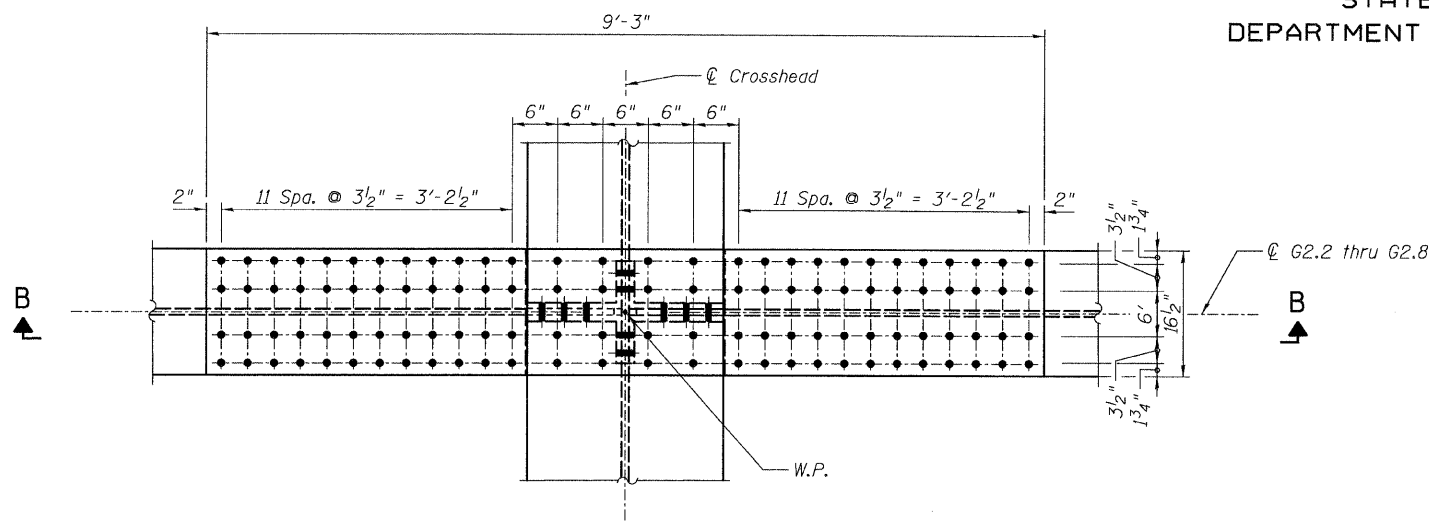
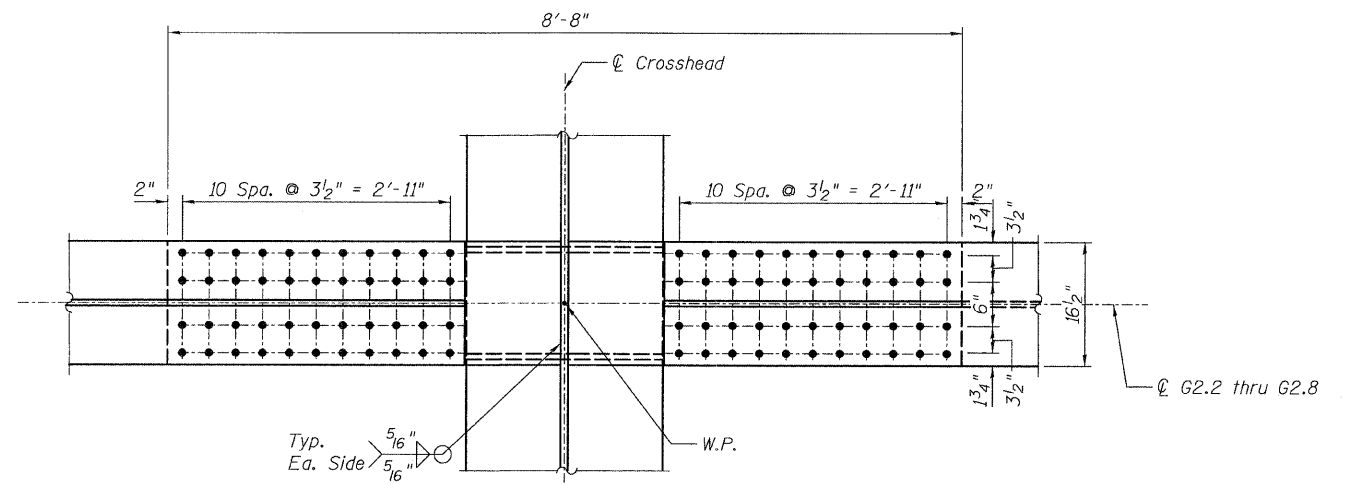


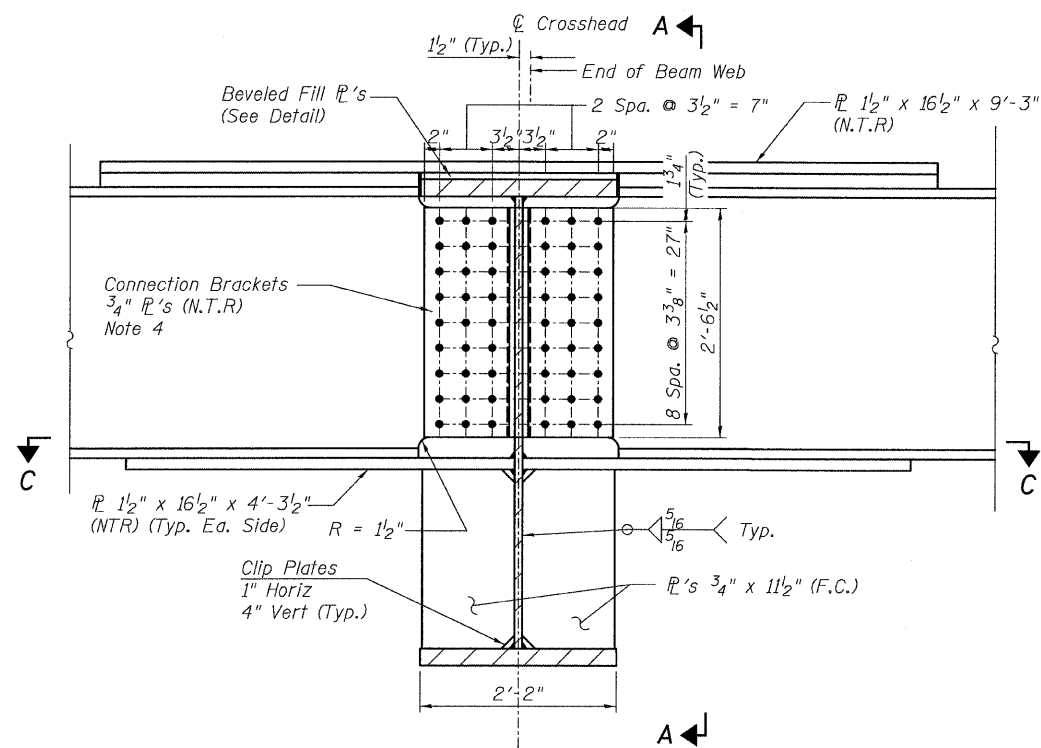
STATE OF ILLINOIS
DEPARTMENT OF TRANSPORTATION



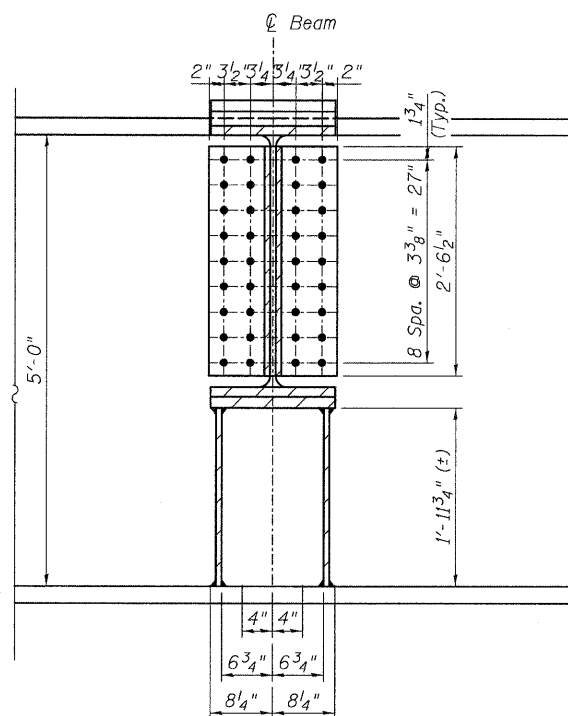
DETAIL 32
(Top Flange)



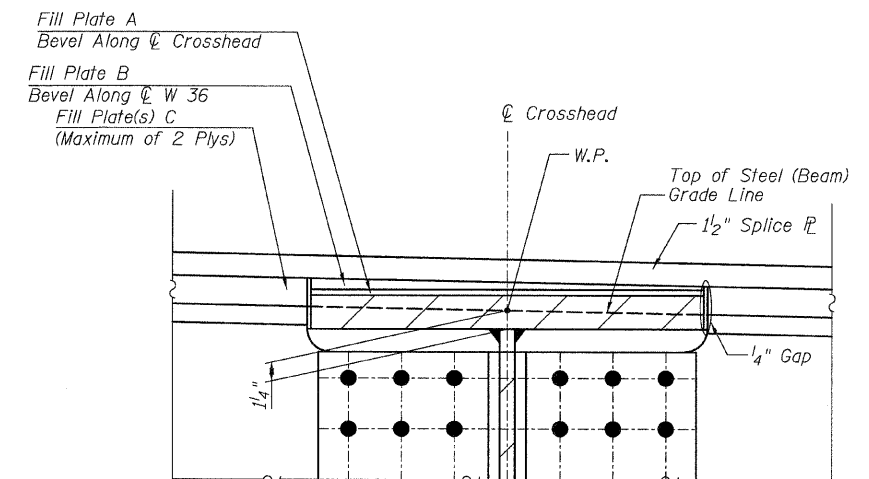
SECTION C-C
(Bottom Flange)



SECTION B-B



SECTION A-A



FILL PLATE DETAIL

NOTES:

1. All steel shall be AASHTO M 270 Grade 50.
2. All bolts shall be 1" ϕ with 1 1/16" ϕ holes.
3. Load carrying components designated "N.T.R." shall conform to the supplemental requirements for Notch Toughness, Zone 2.
4. 3/4" Connection brackets can be fabricated from single bent plate or 2 plates utilizing a pre-qualified, full penetration corner joint welded assembly.

TYLIN INTERNATIONAL

DESIGNED - JPN	REVISIONS	
	NAME	DATE
CHECKED - AMD,		
DRAWN - JMA		
CHECKED - AMD,		
DATE - 08/02/10		

SHEET NO. 89	F.A.I. RTE.	SECTION	COUNTY	TOTAL SHEETS	SHEET NO.
	55	0711.2R & 1011.1BR	COOK	200	119
137 SHEETS	CONTRACT NO. 60L39				
FED. ROAD DIST. NO. 1 ILLINOIS FED. AID PROJECT					

e:\01345\beam and bearing fabrication\5562\Framed\15.dwg 8/5/2010 2:47:14 PM