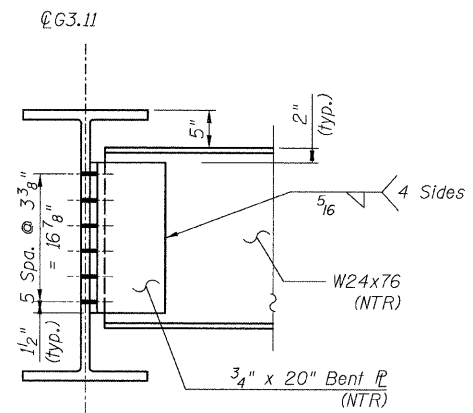
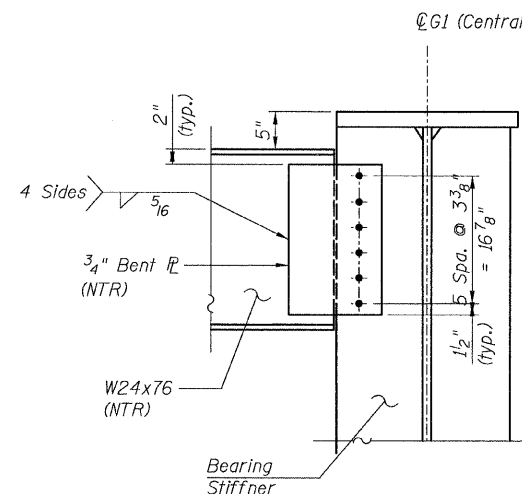
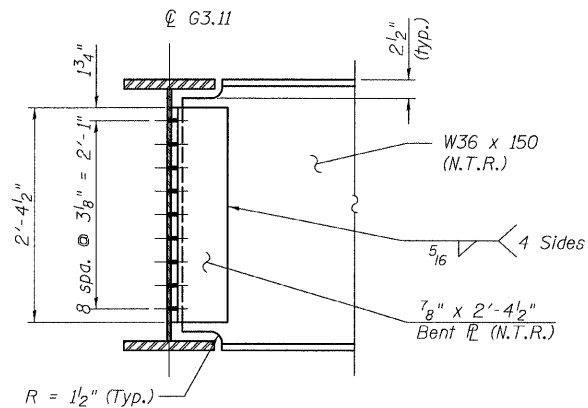
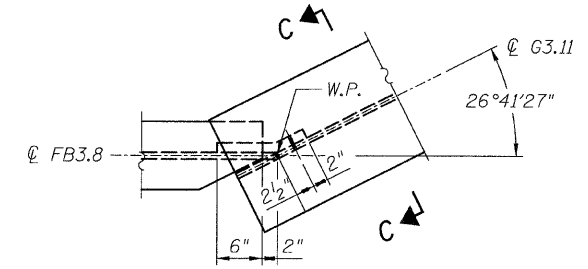
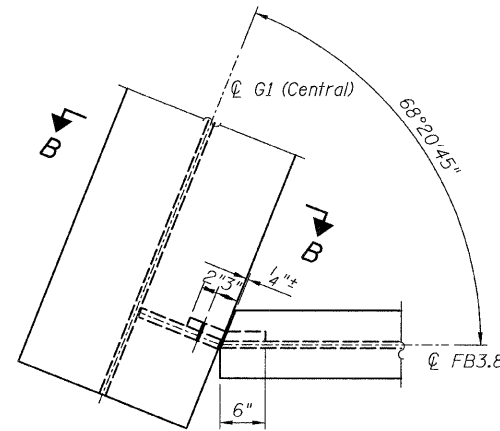
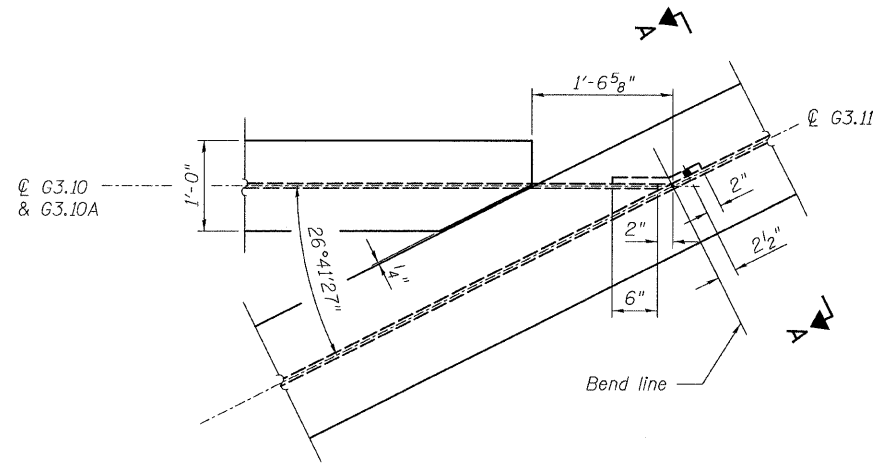


STATE OF ILLINOIS
DEPARTMENT OF TRANSPORTATION



NOTES:

- All steel shall be AASHTO M 270 Grade 50.
- Load carrying components designated "N.T.R." shall conform to the supplemental requirements for Notch Toughness, Zone 2.

CONNECTION DETAIL 24
RAMP 3 FLARE
STRUCTURE NO. 016-0724

TYLIN INTERNATIONAL

DESIGNED - JPN	REVISIONS	
	NAME	DATE
CHECKED - AMD,		
DRAWN - MAU		
CHECKED - AMD,		
DATE - 08/02/10		

SHEET NO. 104 137 SHEETS	F.A.I RTE. 55	SECTION 0711.2R & 1011.1BR	COUNTY COOK	TOTAL SHEETS 200	SHEET NO. 134
	CONTRACT NO. 60L39				
FED. ROAD DIST. NO. 1 ILLINOIS FED. AID PROJECT					

p:\01345\beam and bearing_fabrication\155f3f-amedt\ii.dgn 8/2/2010 2:07:19 PM