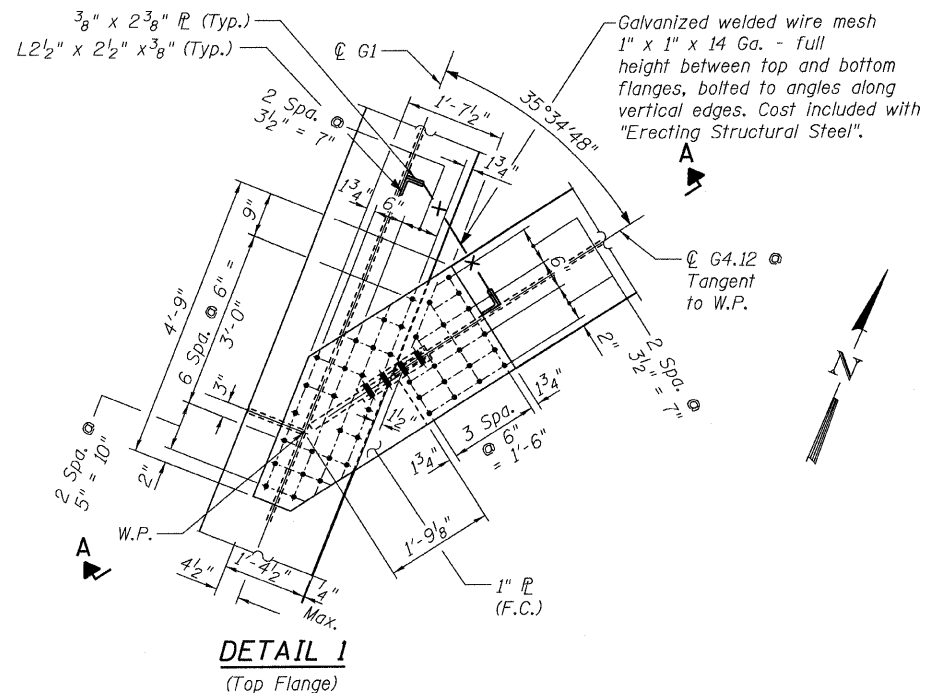
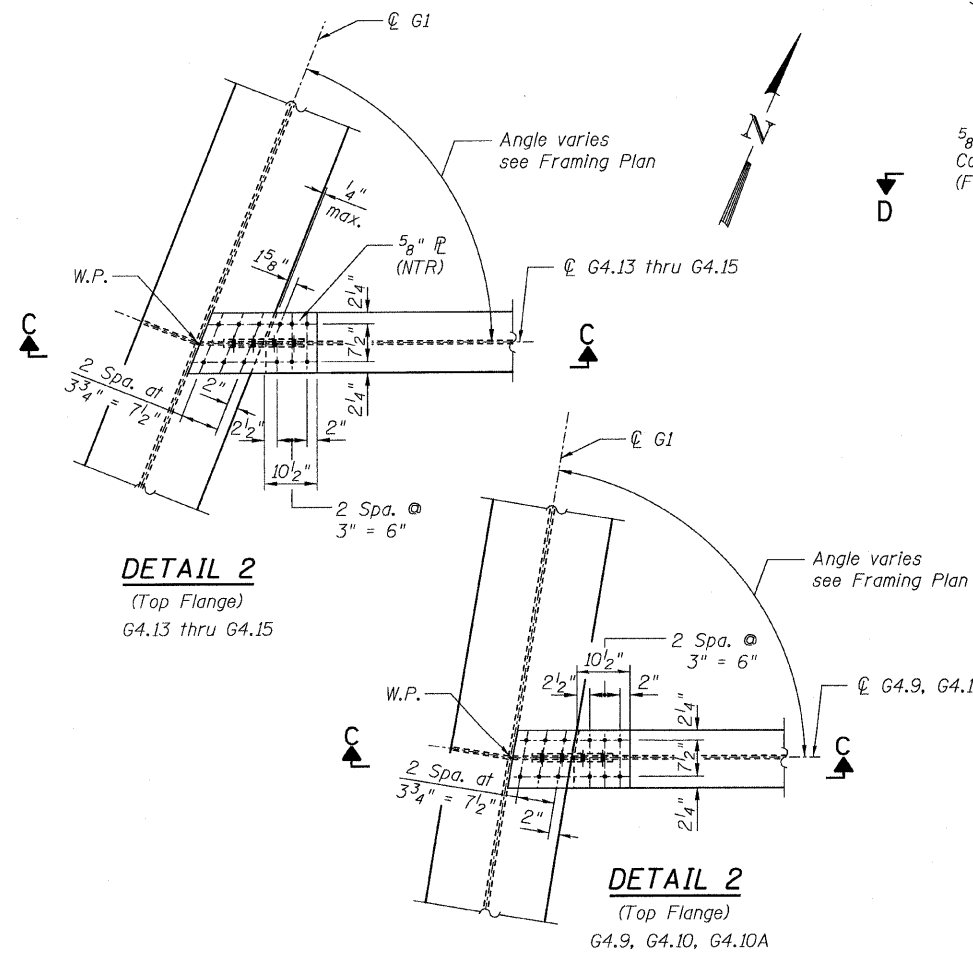


STATE OF ILLINOIS
DEPARTMENT OF TRANSPORTATION

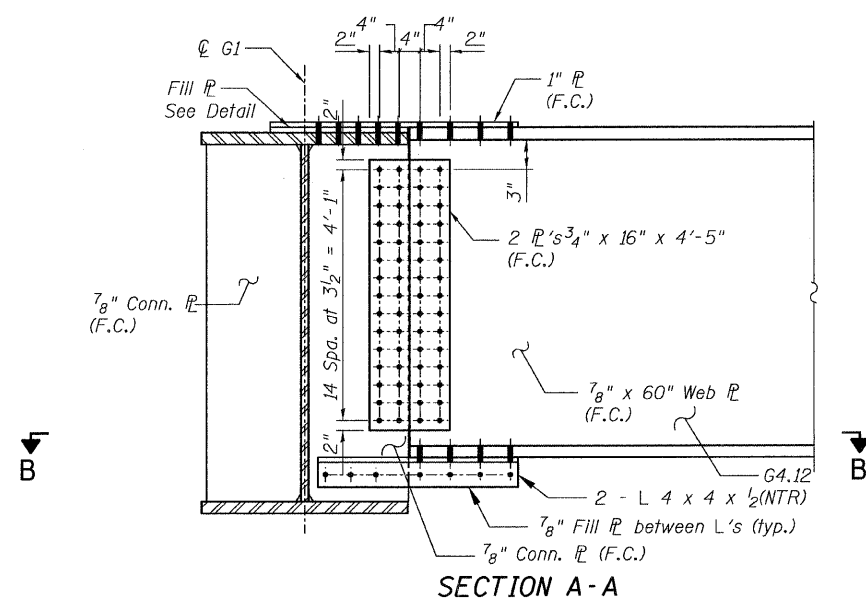


DETAIL 1
(Top Flange)

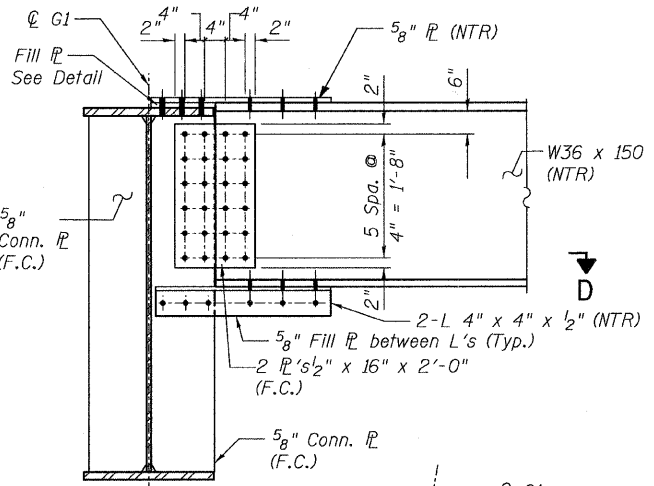


DETAIL 2
(Top Flange)
G4.13 thru G4.15

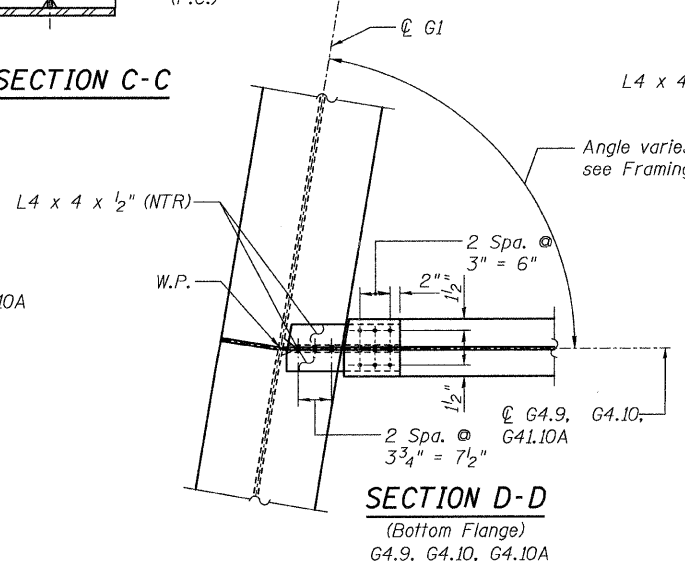
DETAIL 2
(Top Flange)
G4.9, G4.10, G4.10A



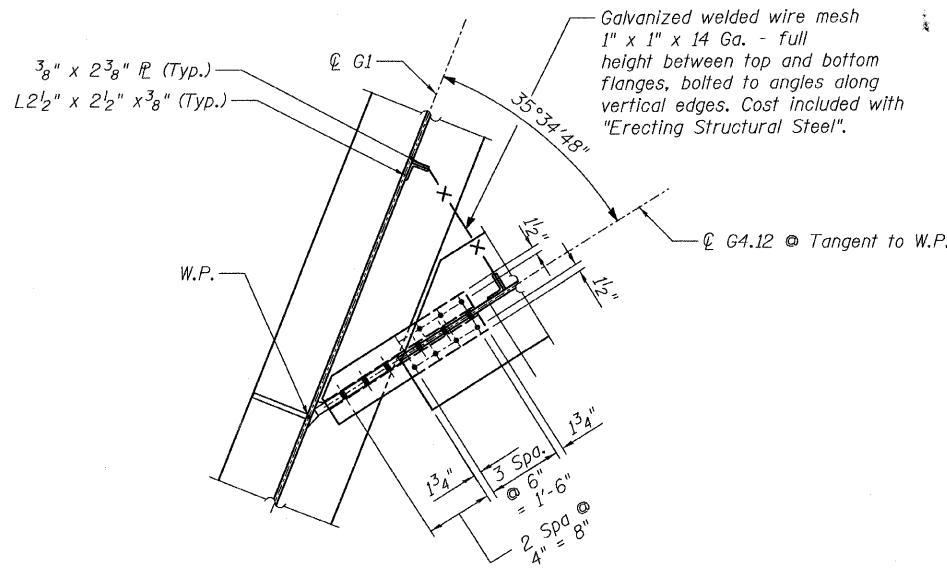
SECTION A-A



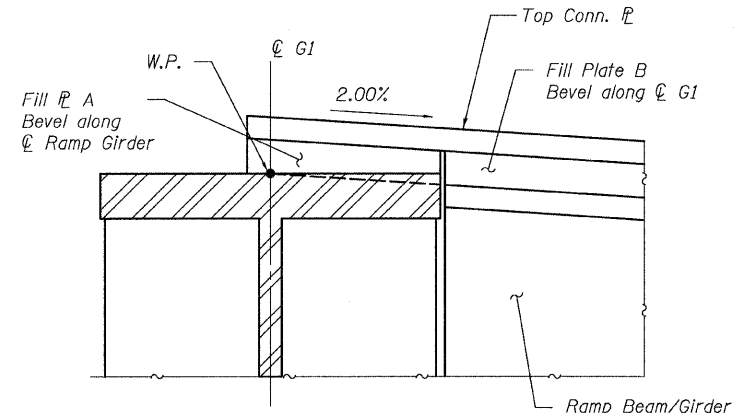
SECTION C-C



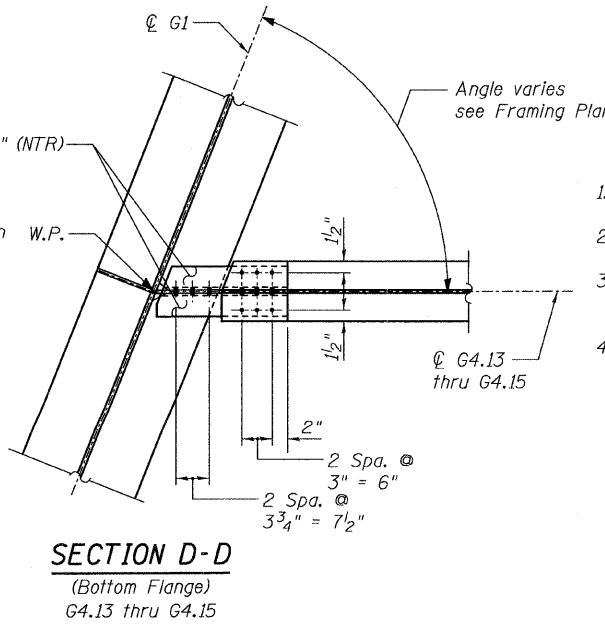
SECTION D-D
(Bottom Flange)
G4.9, G4.10, G4.10A



SECTION B-B
(Bottom Flange)



FILL PL DETAIL



SECTION D-D
(Bottom Flange)
G4.13 thru G4.15

- NOTES:**
- All steel shall be AASHTO M270 Grade 50.
 - For Details 1 and 2 locations, see Sheet 44.
 - F.C. - denotes Fracture Critical Material, AASHTO Zone II.
 - Load carrying components designated "NTR" shall conform to the Supplemental Requirements for Notch Toughness, Zone 2.

CONNECTION DETAILS 1&2
RAMP 4 FLARE
STRUCTURE NO. 016-0724

TYLIN INTERNATIONAL

DESIGNED - EKH, JMA		REVISIONS	
NAME	DATE	NAME	DATE
CHECKED - AMD,			
DRAWN - EKH, JMA			
CHECKED - AMD,			
DATE - 08/02/10			

SHEET NO. 123 137 SHEETS	F.A.I. RTE.	SECTION	COUNTY	TOTAL SHEETS	SHEET NO.
	55	0711.2R & 1011.1BR	COOK	200	153
FED. ROAD DIST. NO. 1			ILLINOIS FED. AID PROJECT		
CONTRACT NO. 60L39					

8/13/2010 8:15:58 PM p:\01345\beam_and_bearing_fabrication\55f4framedtl11.dwg