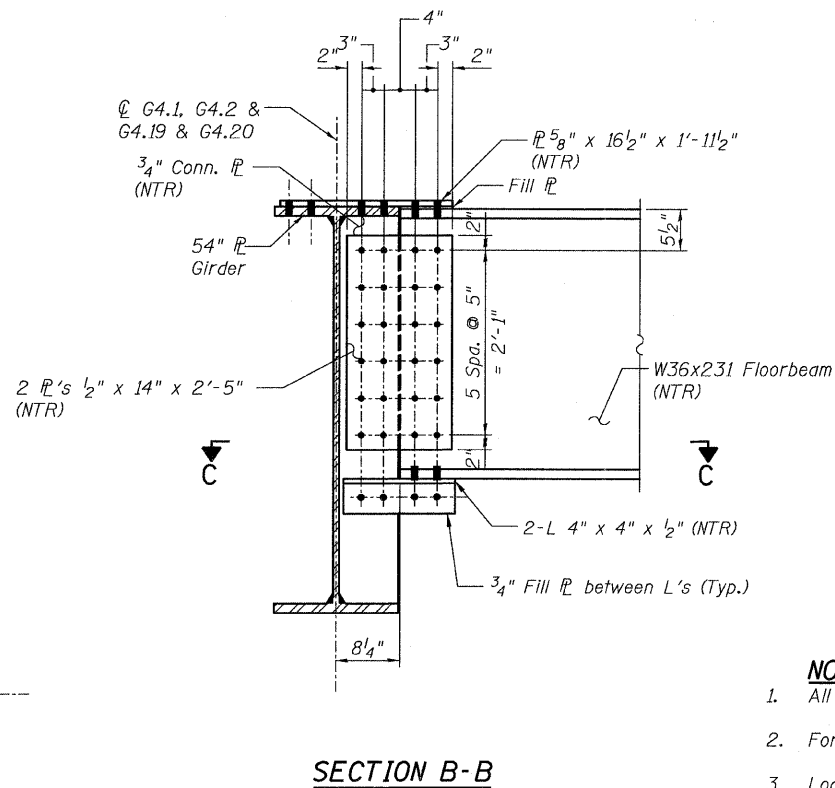
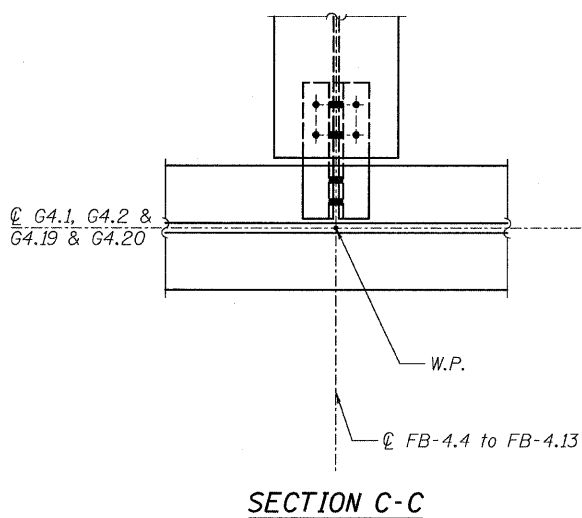
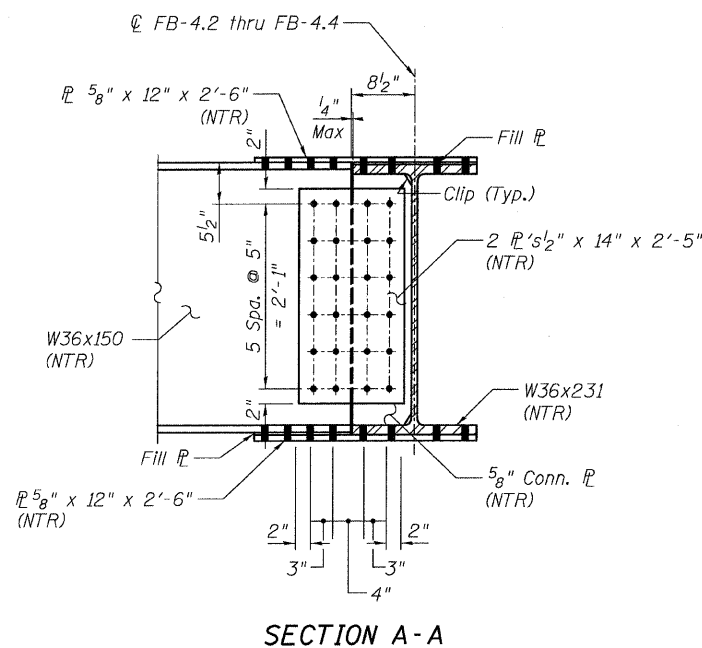
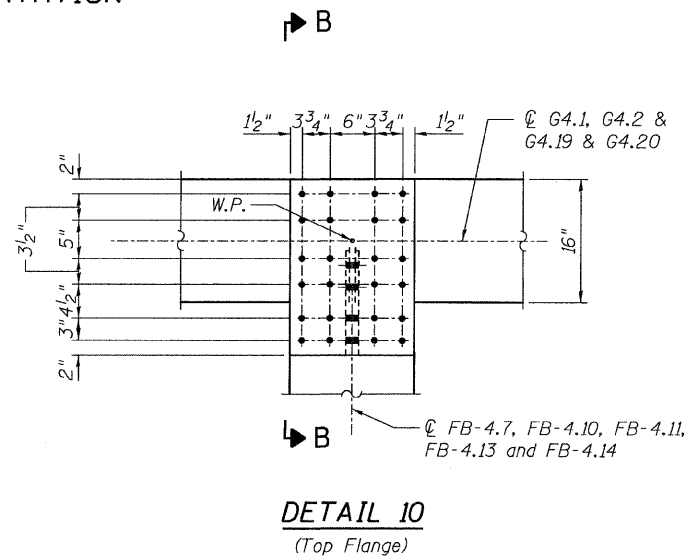
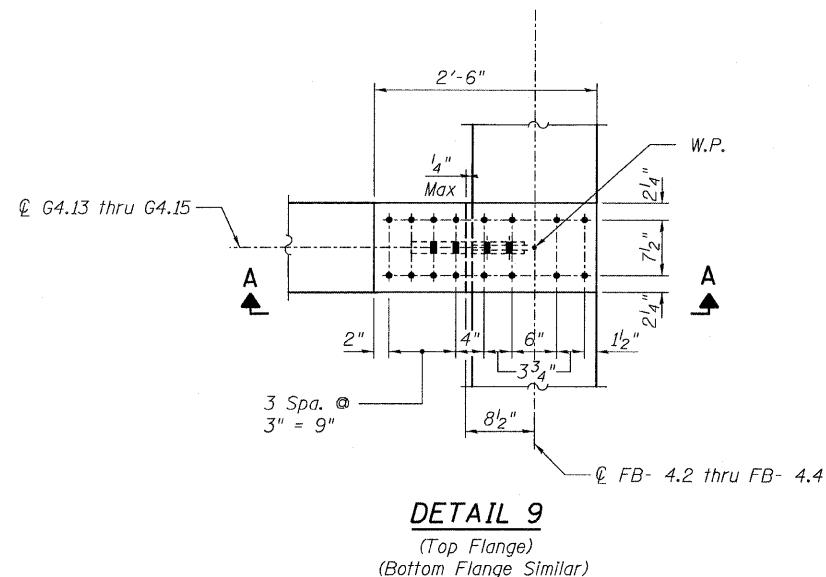


STATE OF ILLINOIS
DEPARTMENT OF TRANSPORTATION



- NOTES:**
- All steel shall be AASHTO M270 Grade 50.
 - For Details 9 and 10 locations, see Sheet 44.
 - Load carrying components designated "NTR" shall conform to the Supplemental Requirements for Notch Toughness, Zone 2.

**CONNECTION DETAILS 9&10
RAMP 4 FLARE
STRUCTURE NO. 016-0724**

TYLIN INTERNATIONAL	DESIGNED - EKH, JMA	REVISIONS		SHEET NO. 127	F.A.I RTE.	SECTION	COUNTY	TOTAL SHEETS	SHEET NO.								
	CHECKED - AMD,	NAME	DATE							137 SHEETS	55	0711.2R & 1011.1BR	COOK	200	157		
	DRAWN - EKH, JMA															CONTRACT NO. 60L39	
	CHECKED - AMD,																FED. ROAD DIST. NO. 1 ILLINOIS FED. AID PROJECT
	DATE - 08/02/10																

8/13/2010 5:47:25 PM p:\01345\beam_and_bearing_fabrication\15574framed\115.dwg