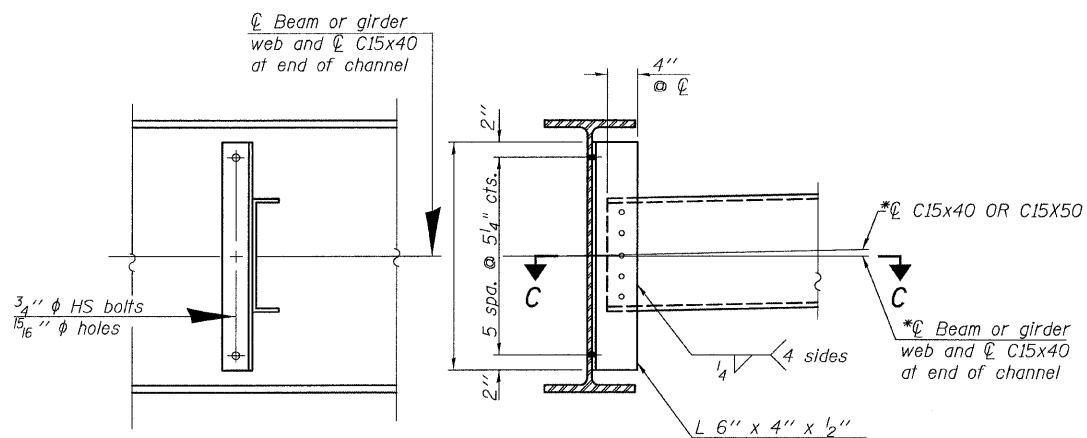
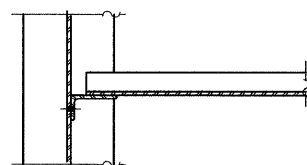


STATE OF ILLINOIS
DEPARTMENT OF TRANSPORTATION

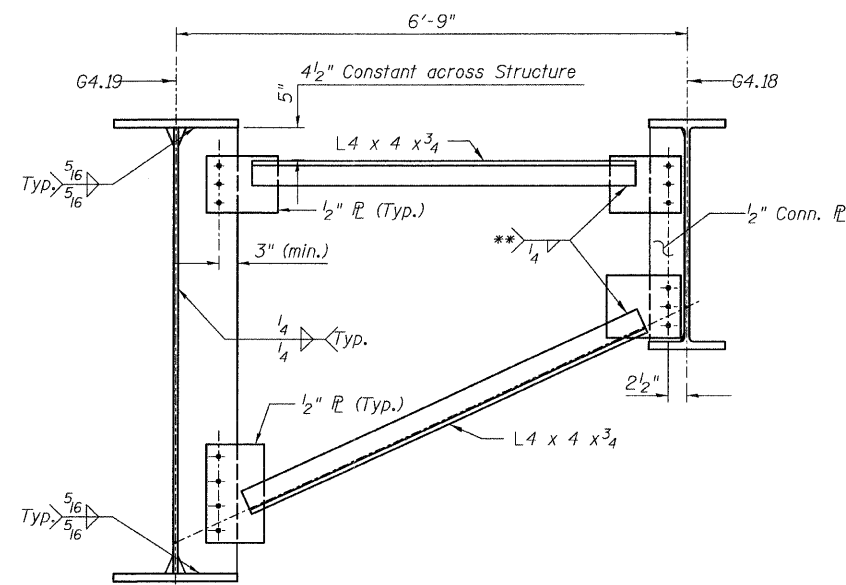


INTERIOR DIAPHRAGM D4.2

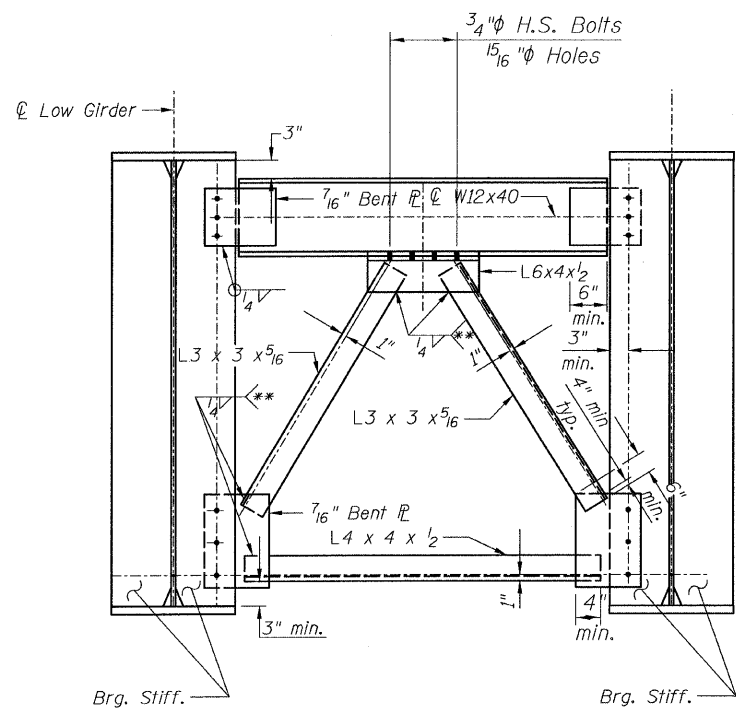
*Alternate channels are permitted to facilitate material acquisition. Calculated weight of structural steel is based on the lighter section. The alternate, if utilized, shall be provided at no additional cost to the Department.



SECTION C-C

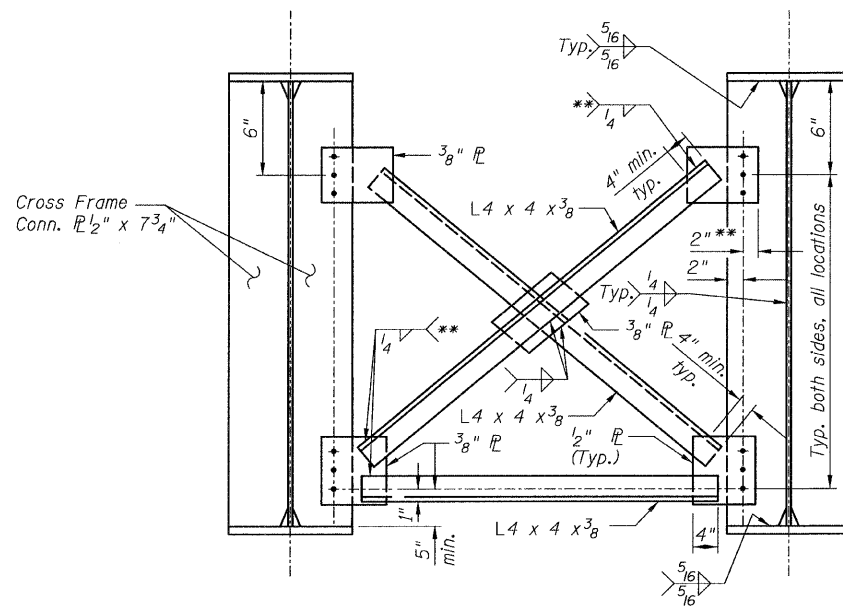


INTERIOR CROSS FRAME CF4.3
(4 Required)



END CROSS FRAME CF4.1
(7 Required)

Note:
Place CrossFrame with channel Flanges and outstanding angle legs outward from abutment backwall. Weld on near side for 7/16" plate.



INTERIOR CROSS FRAME CF4.2
(85 Required)

** Fillet weld angle along 3 sides on one face of gusset plate.

NOTES:

1. All bolts shall be 3/4" φ with 5/16" φ holes unless otherwise noted.
2. Two hardened washers shall be required over all oversize holes for diaphragms.
3. All cross frames or diaphragms shall be installed as steel is erected and secured with erection pins and bolts except as otherwise noted. Individual cross frames or diaphragms at supports may be temporarily disconnected to install bearing anchor rods.

DIAPHRAGMS & DETAILS
RAMP 4 FLARE
STRUCTURE NO. 016-0724

TYLIN INTERNATIONAL

DESIGNED - EKH, JMA	REVISIONS	
	NAME	DATE
CHECKED - AMD,		
DRAWN - EKH, JMA		
CHECKED - AMD,		
DATE - 08/02/10		

SHEET NO. 132	F.A.I. RTE.	SECTION	COUNTY	TOTAL SHEETS	SHEET NO.
	55	0711.2R & 1011.1BR	COOK	200	162
137 SHEETS	CONTRACT NO. 60L39				
FED. ROAD DIST. NO. 1 ILLINOIS FED. AID PROJECT					