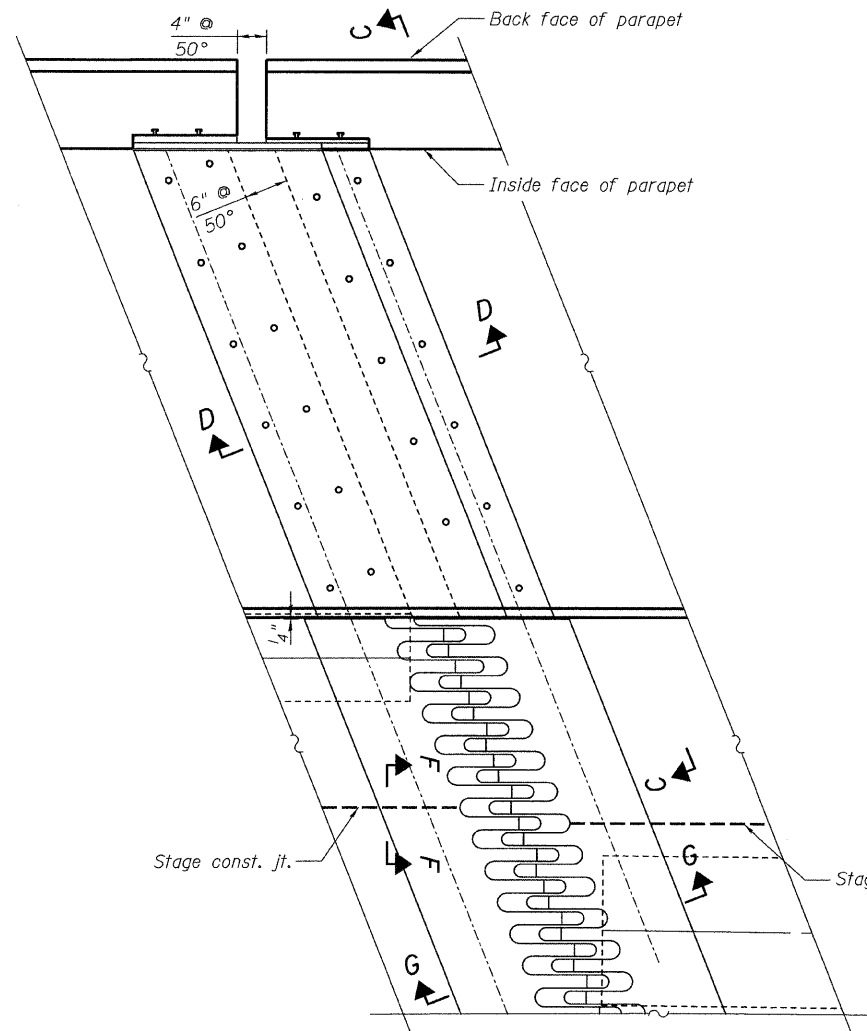
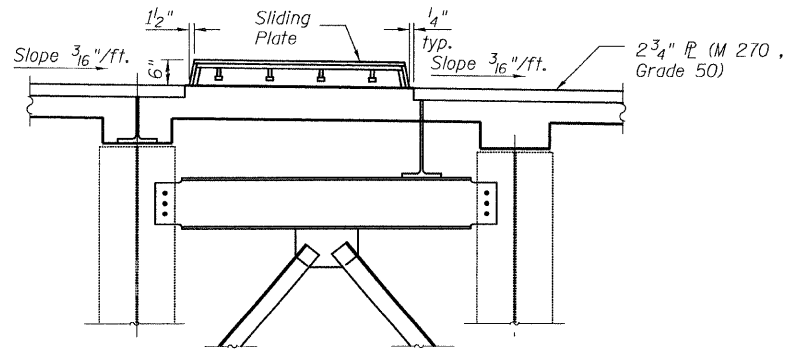


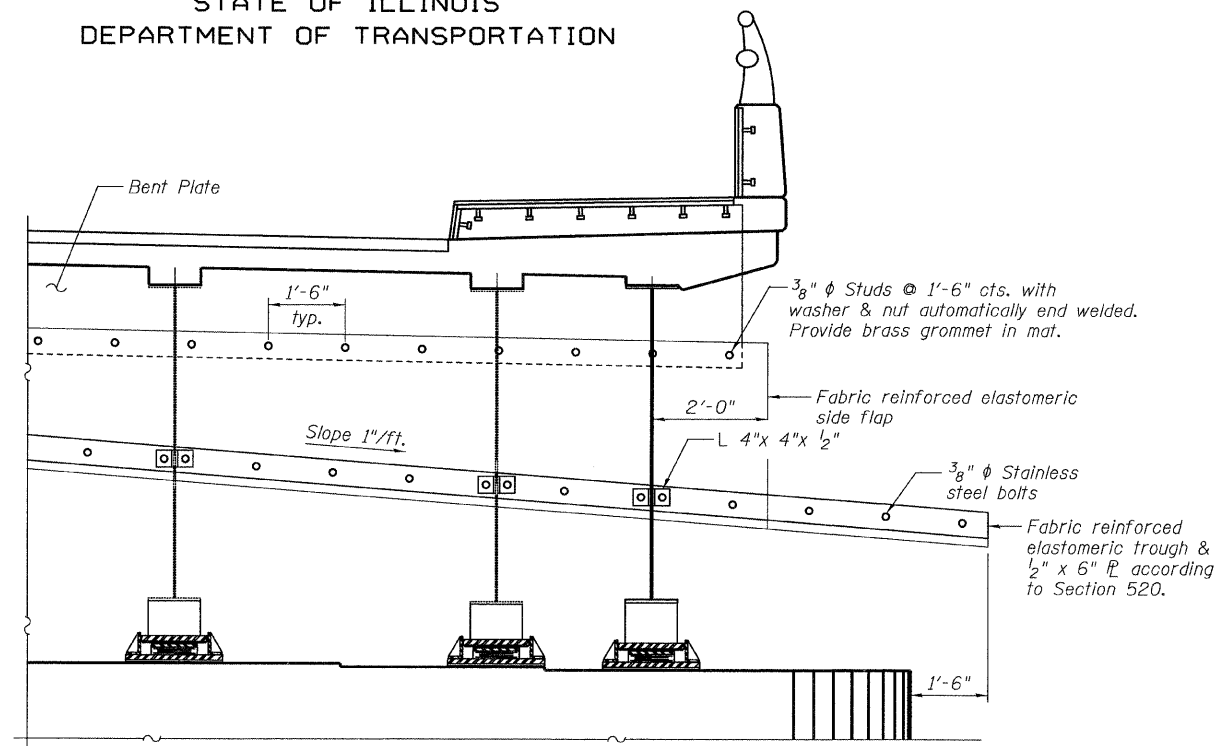
STATE OF ILLINOIS  
DEPARTMENT OF TRANSPORTATION



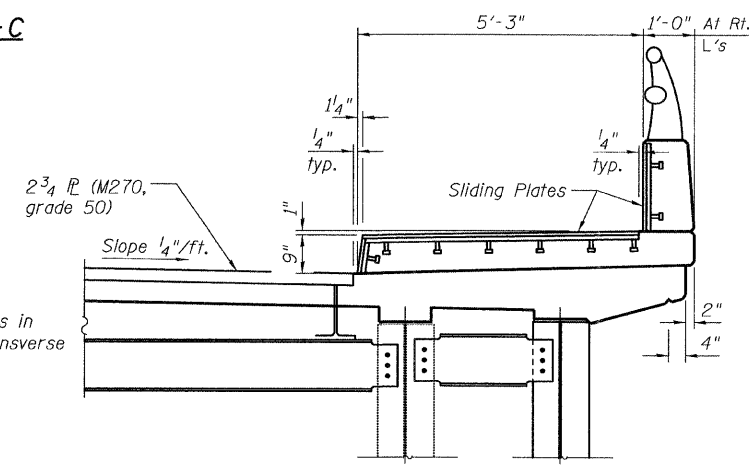
PLAN AT PIER 9  
(at 50°)



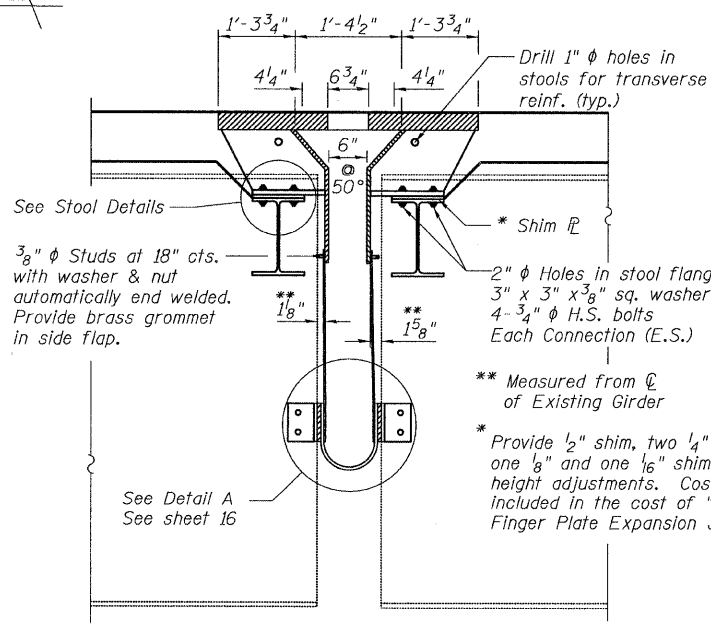
SECTION B-B THRU RAISED MEDIAN  
(Looking North - Showing Sliding Plates)



SECTION C-C



SECTION A-A THRU SIDEWALK AND PARAPET  
(East Side Looking North - Showing Sliding Plates)



SECTION G-G THRU PIER 9  
(Looking West)

STOOL DIMENSIONS

(South Side)		(North Side)	
Stool	Ht. (in.)	Stool	Ht. (in.)
S-1	10 <sup>1</sup> / <sub>2</sub>	S-64	6 <sup>5</sup> / <sub>8</sub>
S-2	10 <sup>1</sup> / <sub>8</sub>	S-65	10 <sup>1</sup> / <sub>4</sub>
S-3	11 <sup>1</sup> / <sub>4</sub>	S-66	10 <sup>5</sup> / <sub>8</sub>
S-4	7 <sup>3</sup> / <sub>8</sub>	S-67	11
S-5	11 <sup>1</sup> / <sub>8</sub>	S-68	7 <sup>1</sup> / <sub>2</sub>
S-6	12 <sup>1</sup> / <sub>4</sub>	S-69	11 <sup>1</sup> / <sub>2</sub>
S-7	12 <sup>5</sup> / <sub>8</sub>	S-70	11 <sup>1</sup> / <sub>8</sub>
S-8	7 <sup>1</sup> / <sub>8</sub>	S-71	12 <sup>1</sup> / <sub>4</sub>
S-9	13	S-72	8 <sup>1</sup> / <sub>2</sub>
S-10	13 <sup>1</sup> / <sub>4</sub>	S-73	13 <sup>3</sup> / <sub>4</sub>
S-11	13 <sup>5</sup> / <sub>8</sub>	S-74	14
S-12	8 <sup>3</sup> / <sub>8</sub>	S-75	14 <sup>3</sup> / <sub>8</sub>
S-13	14 <sup>1</sup> / <sub>2</sub>	S-76	8 <sup>5</sup> / <sub>8</sub>
S-14	14 <sup>3</sup> / <sub>8</sub>	S-77	15 <sup>1</sup> / <sub>4</sub>
S-15	14 <sup>5</sup> / <sub>8</sub>	S-78	15 <sup>1</sup> / <sub>2</sub>
S-16	8 <sup>3</sup> / <sub>8</sub>	S-79	15 <sup>1</sup> / <sub>8</sub>
S-17	15	S-80	8 <sup>1</sup> / <sub>8</sub>
S-18	15 <sup>1</sup> / <sub>4</sub>	S-81	16 <sup>1</sup> / <sub>8</sub>
S-19	15 <sup>1</sup> / <sub>2</sub>	S-82	9 <sup>1</sup> / <sub>8</sub>
S-20	8 <sup>1</sup> / <sub>8</sub>	S-83	17
S-21	16 <sup>1</sup> / <sub>2</sub>	S-84	17 <sup>1</sup> / <sub>4</sub>
S-22	9 <sup>1</sup> / <sub>8</sub>	S-85	17 <sup>1</sup> / <sub>2</sub>
S-23	17	S-86	9 <sup>3</sup> / <sub>8</sub>
S-24	17 <sup>1</sup> / <sub>4</sub>	S-87	18 <sup>1</sup> / <sub>8</sub>
S-25	17 <sup>1</sup> / <sub>2</sub>	S-88	17 <sup>1</sup> / <sub>8</sub>
S-26	9 <sup>3</sup> / <sub>8</sub>	S-89	9 <sup>3</sup> / <sub>8</sub>
S-27	20	S-90	19 <sup>3</sup> / <sub>8</sub>
S-28	19 <sup>1</sup> / <sub>8</sub>	S-91	19
S-29	9 <sup>3</sup> / <sub>8</sub>	S-92	18 <sup>5</sup> / <sub>8</sub>
S-30	19 <sup>3</sup> / <sub>8</sub>	S-93	9 <sup>1</sup> / <sub>2</sub>
S-31	19 <sup>1</sup> / <sub>8</sub>	S-94	18
S-32	18 <sup>1</sup> / <sub>8</sub>	S-95	17 <sup>5</sup> / <sub>8</sub>
S-33	9 <sup>1</sup> / <sub>8</sub>	S-96	17 <sup>1</sup> / <sub>4</sub>
S-34	17 <sup>1</sup> / <sub>8</sub>	S-97	8 <sup>1</sup> / <sub>8</sub>
S-35	17 <sup>3</sup> / <sub>8</sub>	S-98	16 <sup>3</sup> / <sub>4</sub>
S-36	17 <sup>3</sup> / <sub>8</sub>	S-99	16 <sup>3</sup> / <sub>8</sub>
S-37	8 <sup>1</sup> / <sub>8</sub>	S-100	16
S-38	16 <sup>3</sup> / <sub>4</sub>	S-101	8 <sup>5</sup> / <sub>8</sub>
S-39	16 <sup>1</sup> / <sub>2</sub>	S-102	15 <sup>1</sup> / <sub>2</sub>
S-40	16 <sup>1</sup> / <sub>8</sub>	S-103	15 <sup>1</sup> / <sub>8</sub>
S-41	8 <sup>3</sup> / <sub>4</sub>	S-104	14 <sup>5</sup> / <sub>8</sub>
S-42	15 <sup>1</sup> / <sub>8</sub>	S-105	8 <sup>1</sup> / <sub>4</sub>
S-43	15 <sup>1</sup> / <sub>2</sub>	S-106	13 <sup>5</sup> / <sub>8</sub>
S-44	15 <sup>1</sup> / <sub>4</sub>	S-107	13 <sup>1</sup> / <sub>8</sub>
S-45	8 <sup>1</sup> / <sub>2</sub>	S-108	12 <sup>3</sup> / <sub>4</sub>
S-46	14 <sup>1</sup> / <sub>2</sub>	S-109	7 <sup>5</sup> / <sub>8</sub>
S-47	14 <sup>1</sup> / <sub>8</sub>	S-110	11 <sup>1</sup> / <sub>8</sub>
S-48	13 <sup>1</sup> / <sub>4</sub>	S-111	11 <sup>3</sup> / <sub>8</sub>
S-49	8	S-112	10 <sup>1</sup> / <sub>8</sub>
S-50	12 <sup>1</sup> / <sub>8</sub>	S-113	6 <sup>1</sup> / <sub>8</sub>
S-51	12 <sup>1</sup> / <sub>2</sub>	S-114	10 <sup>1</sup> / <sub>4</sub>
S-52	12 <sup>1</sup> / <sub>8</sub>	S-115	10 <sup>1</sup> / <sub>4</sub>
S-53	7 <sup>1</sup> / <sub>2</sub>	S-116	9 <sup>3</sup> / <sub>4</sub>
S-54	11 <sup>1</sup> / <sub>4</sub>	S-117	5 <sup>5</sup> / <sub>8</sub>
S-55	10 <sup>1</sup> / <sub>8</sub>	S-118	10 <sup>3</sup> / <sub>8</sub>
S-56	10 <sup>1</sup> / <sub>2</sub>	S-119	10
S-57	7		
S-58	10		
S-59	9 <sup>3</sup> / <sub>8</sub>		
S-60	5 <sup>5</sup> / <sub>8</sub>		
S-61	10		
S-62	9 <sup>1</sup> / <sub>2</sub>		
S-63	5 <sup>5</sup> / <sub>8</sub>		

FINGER PLATE  
DETAILS I  
STRUCTURE NO. 016-3240

TYLIN INTERNATIONAL	DESIGNED - DY, LS	REVISIONS		SHEET NO. 15	F.A.I. RTE. 55	SECTION 0711.2R & 1011.1BR	COUNTY COOK	TOTAL SHEETS 200	SHEET NO. 182
	CHECKED - AMD, LS	NAME	DATE						
	DRAWN - DY, LS								
	CHECKED - AMD, LS								
	DATE - 08/02/10			33 SHEETS		CONTRACT NO. 60L39			
					FED. ROAD DIST. NO. 1 ILLINOIS FED. AID PROJECT				

p:\01345\beam and bearing fabrication\155c3f\inset1.dgn 8/2/2010 1:59:05 PM