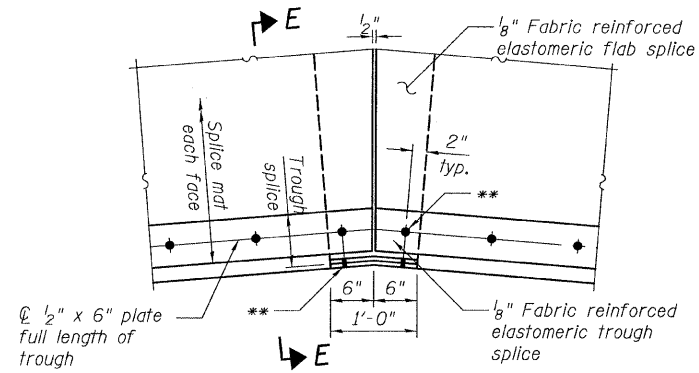
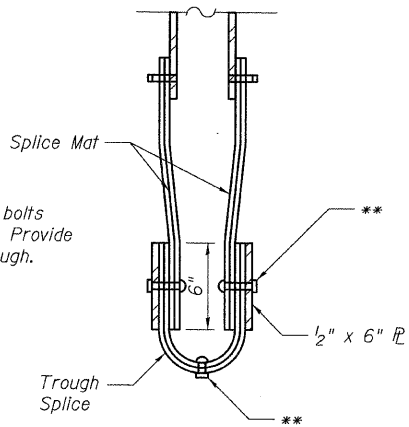


STATE OF ILLINOIS  
DEPARTMENT OF TRANSPORTATION

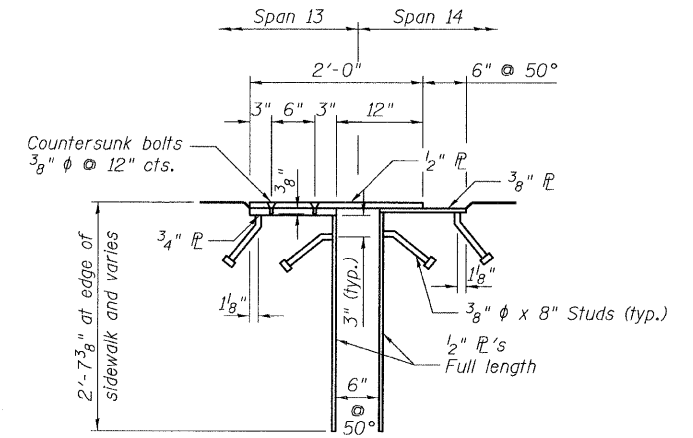


**TROUGH SPLICE DETAIL**

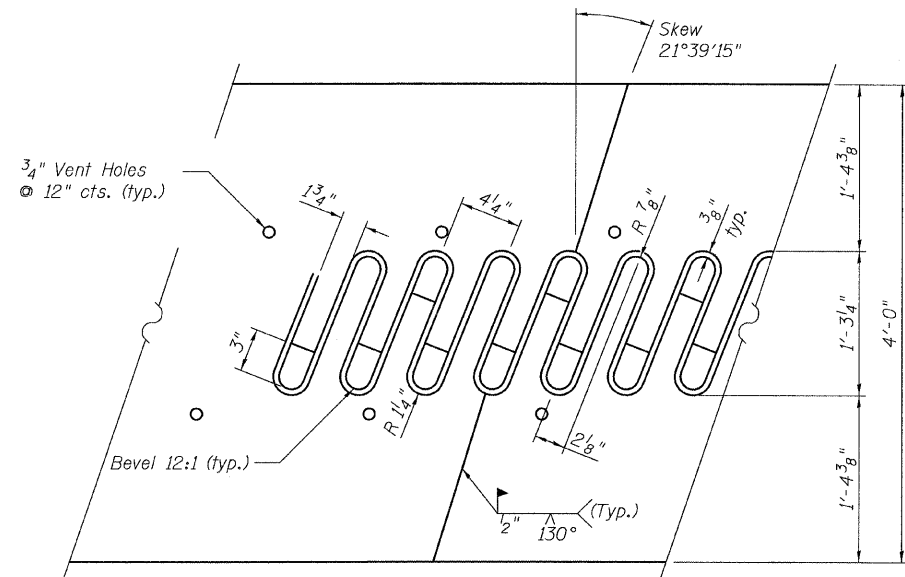
\*\*  
3/8" φ Stainless steel bolts  
with washers & nuts. Provide  
brass grommet in trough.



**SECTION E-E**



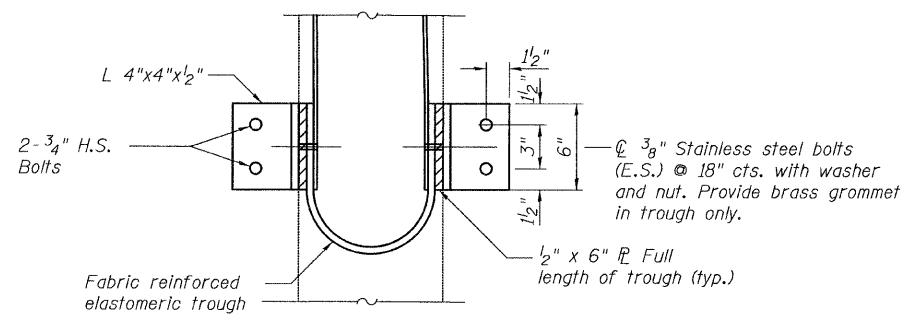
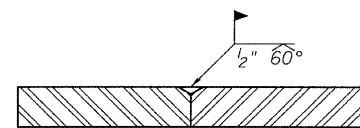
**SECTION D-D  
SIDEWALK PLATE ASSEMBLY DETAIL**



**FLAME CUTTING DIAGRAM**

Cut from 1/2" x 4'-0" x 69'-2 1/4" for West Side  
& 1/2" x 4'-0" x 31'-0 3/4" for East Side

**STAGE CONSTRUCTION JOINT - SECTION F-F**  
(When Required)



**DETAIL "A"**

**NOTES**

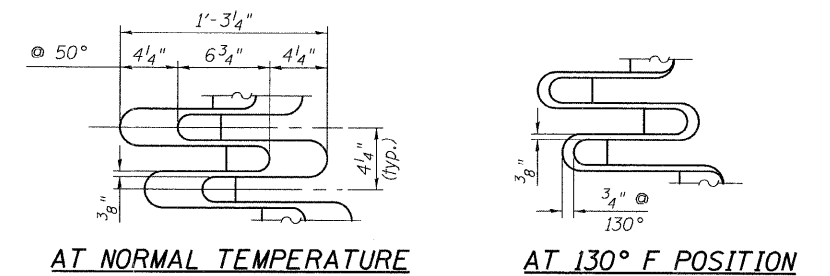
1. For stool locations, see sheet 13 & 14.
2. For View C-C, see sheet 15.
3. According to existing plans the diaphragms are level. The Contractor shall verify in field before ordering material's.
4. See sheets 24 & 25 for W12X40 diaphragm details.
5. Finger plate expansion joints shall be assembled in their final relative position with the ends in place for shop inspection and acceptance.

**LEGEND**

E.S. - Denotes Each Side  
F.F - Denotes Front Face

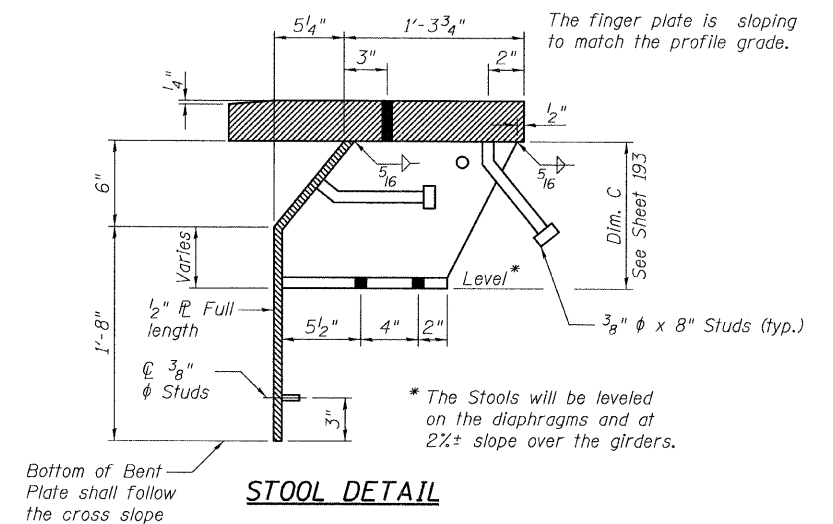
**BILL OF MATERIAL**

ITEM	UNIT	TOTAL
Furnishing Finger Plate Expansion Joint, 6"	FOOT	116



**FINGER PLATE DETAILS**

Temperature Range = -30° to 130°  
with 50° = Normal  
Coeff. of Linear Expansion = 0.0000065/° F



**STOOL DETAIL**

**FINGER PLATE  
DETAILS 2  
STRUCTURE NO. 016-3240**

**TYLIN INTERNATIONAL**

DESIGNED -	DY, LS	REVISIONS	
CHECKED -	AMD, LS	NAME	DATE
DRAWN -	DY, LS		
CHECKED -	AMD, LS		
DATE -	08/02/10		

SHEET NO. 16	F.A.I RTE.	SECTION	COUNTY	TOTAL SHEETS	SHEET NO.
33 SHEETS	55	0711.2R & 1011.1BR	COOK	200	183
CONTRACT NO. 60L39					
FED. ROAD DIST. NO. 1 ILLINOIS FED. AID PROJECT					

p:\01345\beam\_and\_bearing\_fabrication\155c3finger2.dgn 8/2/2010 1:59:07 PM