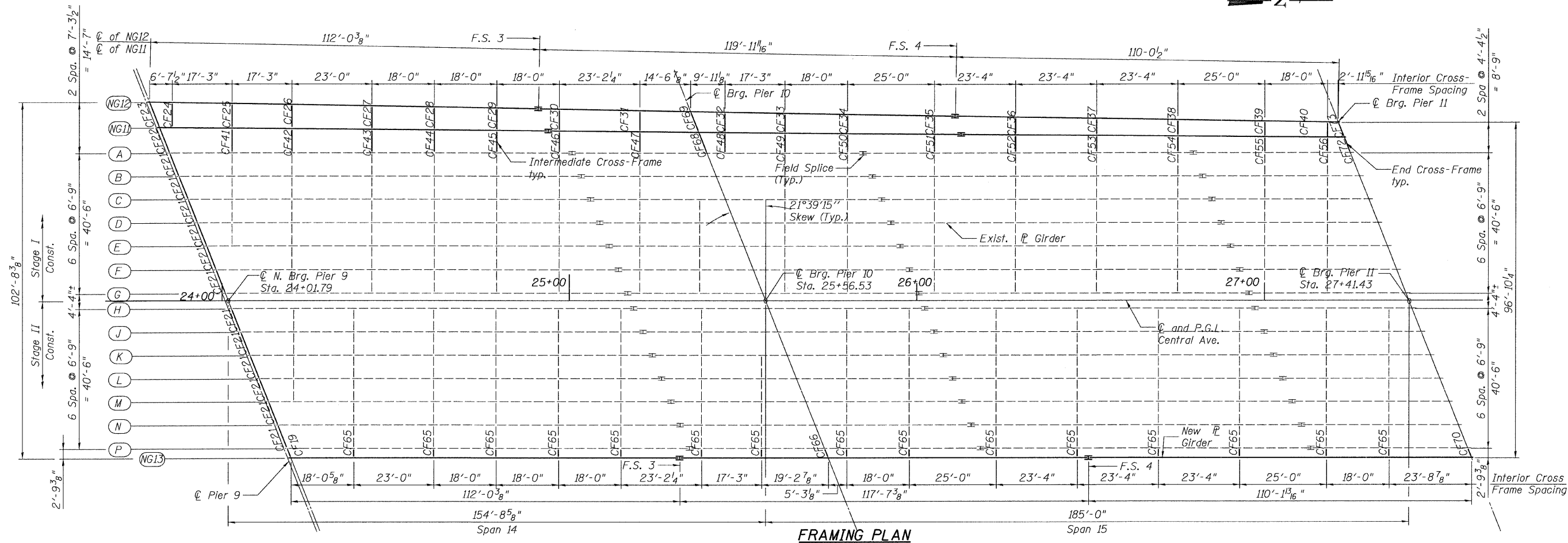
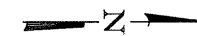


STATE OF ILLINOIS
DEPARTMENT OF TRANSPORTATION



FRAMING PLAN

FRAMING PLAN

1. For Bill of Material, see Sheet 2.
2. For Girder Elevations, see Sheet 22.
3. For Cross Frame Details, see Sheet 25.
4. For Field Splice Details, see Sheet 28.
5. For Shear Stud Details, see Sheet 23.
6. F.S. - denotes girder Field Splice.
7. E.G.- denotes Existing Girder.

TOP OF WEB ELEVATIONS*

Beam	¢ N. Brg. Pier 9	Field Splice 3	¢ Brg. Pier 10	Field Splice 4	¢ Brg. Pier 11
NG11	629.49	629.78	629.92	630.41	630.89
NG12	629.49	629.64	629.91	630.52	630.83
NG13	629.72	630.05	630.27	630.65	630.90

* For Fabrication Only

BEARING SEAT ELEVATIONS

"FOR INFORMATION ONLY"

Girder Line	¢ brg. N. pier 9	¢ brg. pier 10	¢ brg. pier 11
NG12	622.47	620.75	619.71
NG11	622.47	620.75	619.64
A	622.58	620.13	618.11
B	622.67	620.23	618.21
C	622.76	620.32	618.30
D	622.86	620.42	618.40
E	622.95	620.51	618.49
F	623.05	620.60	618.58
G	623.14	620.70	618.68
H	623.14	620.70	618.68
J	623.07	620.63	618.61
K	623.00	620.55	618.53
L	622.92	620.48	618.46
M	622.85	620.40	618.38
N	622.77	620.33	618.31
P	622.70	621.11	619.65
NG13	622.70	621.11	619.65

FRAMING PLAN
SPANS 14 & 15
STRUCTURE NO. 016-3240

TYLIN INTERNATIONAL	DESIGNED - DY, LS	REVISIONS		SHEET NO. 18 33 SHEETS	F.A.I RTE. 55	SECTION 0711.2R & 1011.1BR	COUNTY COOK	TOTAL SHEETS 200	SHEET NO. 185	
	CHECKED - AMD, LS	NAME	DATE							CONTRACT NO. 60L39
	DRAWN - DY, LS									
	CHECKED - AMD, LS									
DATE - 08/02/10				FED. ROAD DIST. NO. 1 ILLINOIS FED. AID PROJECT						

p:\01345\beam_and_bearing_fabrication\15c3f-emplen2.dgn 8/13/2010 4:35:07 PM