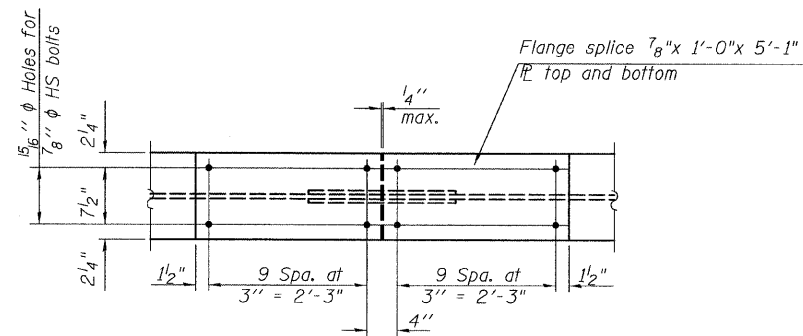
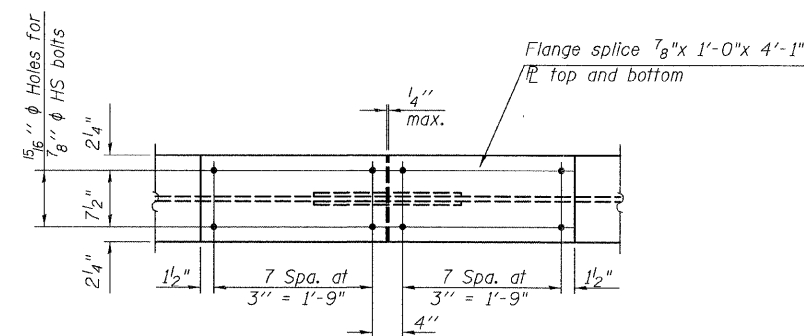


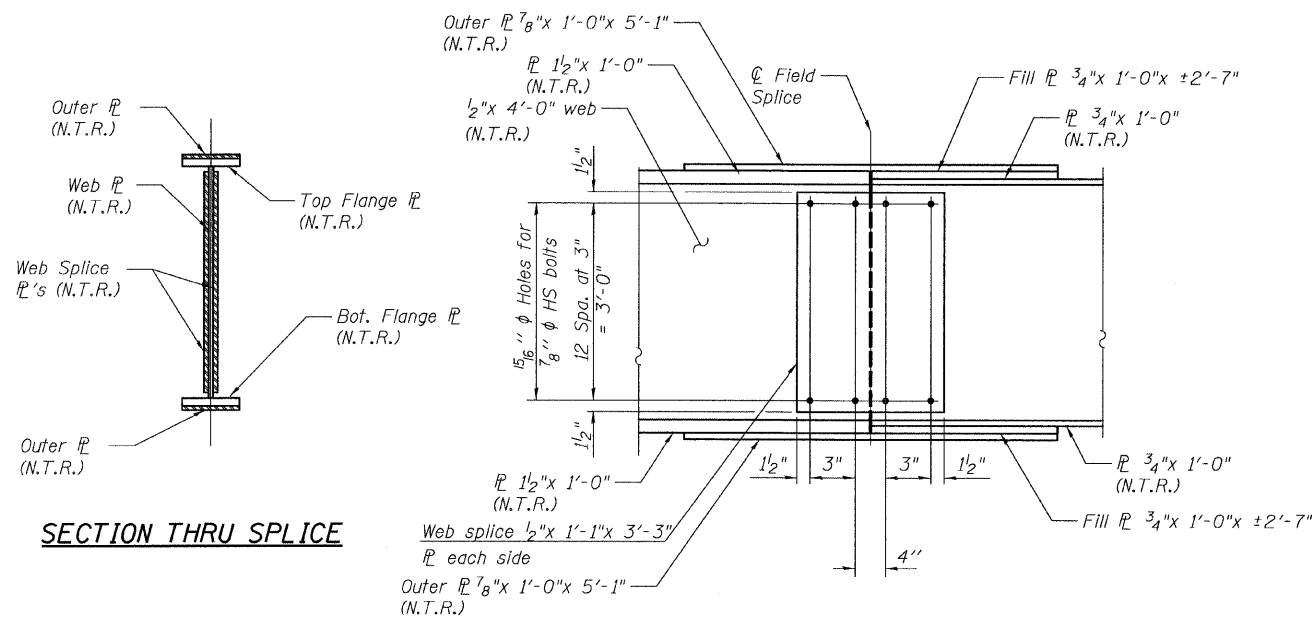
STATE OF ILLINOIS
DEPARTMENT OF TRANSPORTATION



PLAN



PLAN

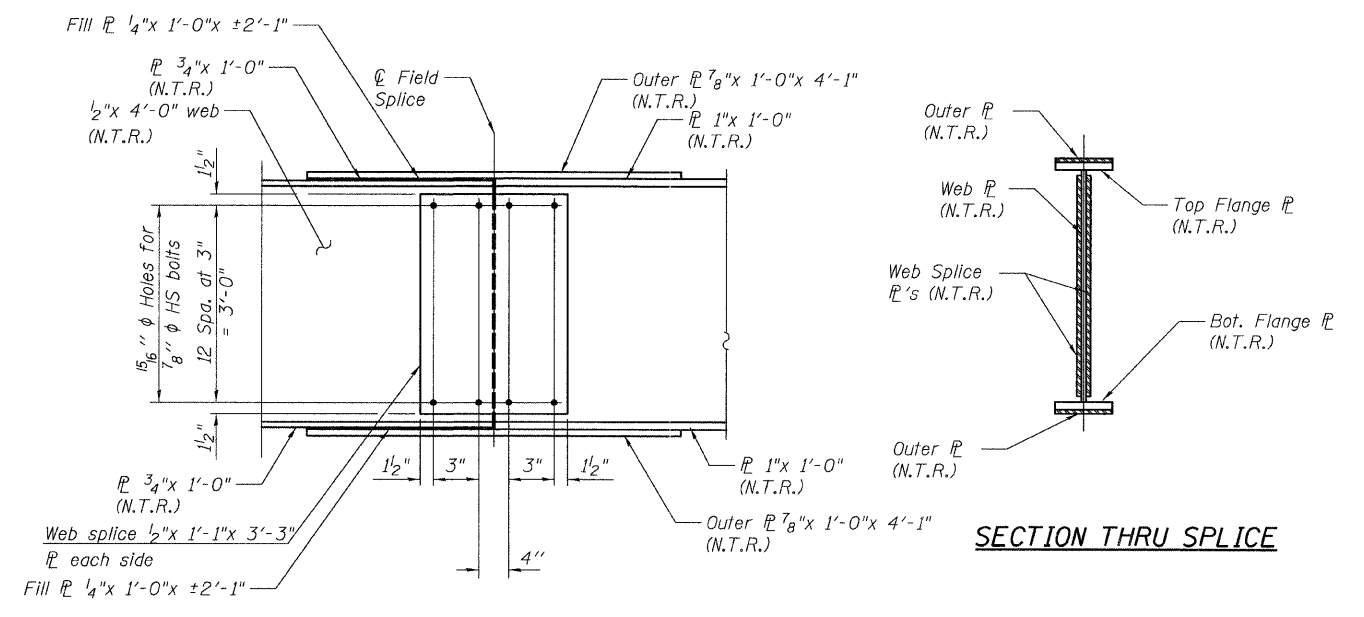


SECTION THRU SPLICE

ELEVATION

FIELD SPLICE - 1 DETAIL

(4 Required)

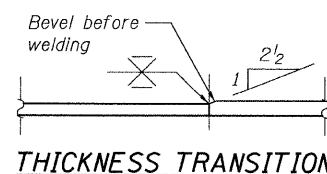


SECTION THRU SPLICE

ELEVATION

FIELD SPLICE - 2 DETAIL

(4 Required)



THICKNESS TRANSITION

NOTES:

- All steel shall be AASHTO M 270 Grade 50.
- Load carrying components designated 'N.T.R.' shall conform to the Supplemental Requirements for Notch Toughness, Zone 2.

FRAMING DETAILS
FIELD SPLICES 1 & 2
STRUCTURE NO. 016-3240

TYLIN INTERNATIONAL	DESIGNED - DY, LS	REVISIONS		SHEET NO. 27	F.A.I. RTE. 55	SECTION 0711.2R & 1011.1BR	COUNTY COOK	TOTAL SHEETS 200	SHEET NO. 194
	CHECKED - AMD, LS	NAME	DATE						
	DRAWN - DY, LS								
	CHECKED - AMD, LS								
	DATE - 08/02/10								
				33 SHEETS	CONTRACT NO. 60L39				
				FED. ROAD DIST. NO. 1 ILLINOIS FED. AID PROJECT					

8/27/2010 1:59:19 PM p:\0345\beam_and_bearing_fabrication\155s3f\framed.tj10.dgn