

STATE OF ILLINOIS  
DEPARTMENT OF TRANSPORTATION

**BEARING DIMENSION TABLE**

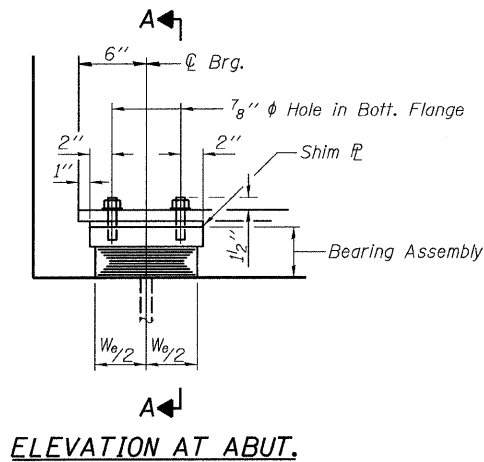
Bearing Location	Beams	Type	No. Req'd.	T <sub>h</sub> in.	Elastomer							Top Plate					Bottom Plate			Anchor Bolts				Pin/les/Pin			Side Retainers								
					W <sub>e</sub> in.	L <sub>e</sub> in.	T <sub>e</sub> in.	T <sub>p</sub> in.	N <sub>p</sub>	T <sub>s</sub> in.	N <sub>s</sub>	W <sub>t</sub> in.	L <sub>t</sub> in.	T <sub>td</sub> in.	T <sub>tu</sub> in.	R <sub>t</sub> in.	W <sub>b</sub> in.	L <sub>b</sub> in.	T <sub>b</sub> in.	D <sub>a</sub> in.	L <sub>a</sub> in.	R <sub>b</sub> in.	H <sub>b</sub> in.	W <sub>p</sub> in.	D <sub>p</sub> in.	D <sub>s</sub> in.	H <sub>p</sub> in.	y in.	z in.	t in.	h in.	v in.			
C. Abut. 4, N. Brgs.	NG4,NG5,NG8,NG9	I	4	5 <sup>3</sup> / <sub>16</sub>	9	12	3 <sup>3</sup> / <sub>16</sub>	3 <sup>3</sup> / <sub>8</sub>	7	3 <sup>3</sup> / <sub>32</sub>	6	10	14	2	2	6	-	-	-	-	-	2 <sup>1</sup> / <sub>4</sub>	-	-	-	2 <sup>1</sup> / <sub>8</sub>	4	1 <sup>1</sup> / <sub>2</sub>	1 <sup>1</sup> / <sub>4</sub>	5 <sup>3</sup> / <sub>16</sub>					
C. Abut. 4, N. Brgs.	NG1,NG2,NG3,NG6,NG7,NG10	I	6	5 <sup>4</sup> / <sub>16</sub>	10	14	3 <sup>4</sup> / <sub>16</sub>	3 <sup>1</sup> / <sub>8</sub>	6	1 <sup>1</sup> / <sub>8</sub>	5	11	16 <sup>1</sup> / <sub>2</sub>	2	2	7	-	-	-	-	-	2 <sup>1</sup> / <sub>4</sub>	-	-	-	2 <sup>1</sup> / <sub>8</sub>	4	1 <sup>1</sup> / <sub>2</sub>	1 <sup>1</sup> / <sub>4</sub>	5 <sup>4</sup> / <sub>16</sub>					
C. Abut. 4, N. Brgs.	A-R	I	16	5 <sup>3</sup> / <sub>16</sub>	9	12	3 <sup>3</sup> / <sub>16</sub>	3 <sup>3</sup> / <sub>8</sub>	7	3 <sup>3</sup> / <sub>32</sub>	6	10	14	2	2	6	-	-	-	-	-	2 <sup>1</sup> / <sub>4</sub>	-	-	-	2 <sup>1</sup> / <sub>8</sub>	4	1 <sup>1</sup> / <sub>2</sub>	1 <sup>1</sup> / <sub>4</sub>	5 <sup>3</sup> / <sub>16</sub>					
Pier 7	NG1,NG2,NG3,NG7	Fix	4	6	-	-	-	-	-	-	-	-	-	-	-	-	-	-	-	-	12 <sup>1</sup> / <sub>4</sub>	22 <sup>1</sup> / <sub>4</sub>	3	1 <sup>1</sup> / <sub>4</sub>	15	-	1 <sup>3</sup> / <sub>4</sub>	2 <sup>3</sup> / <sub>4</sub>	1 <sup>1</sup> / <sub>2</sub>	1 <sup>1</sup> / <sub>8</sub>	1 <sup>1</sup> / <sub>8</sub>	-	-	-	-
Pier 7	A-R	Fix	-	-	-	-	-	-	-	-	-	-	-	-	-	-	-	-	-	-	-	-	-	-	-	-	-	-	-	-	-	-	-	-	
Pier 8	NG1,NG2,NG3,NG7	I	4	7 <sup>13</sup> / <sub>16</sub>	12	18	5 <sup>1</sup> / <sub>16</sub>	9 <sup>1</sup> / <sub>16</sub>	7	3 <sup>1</sup> / <sub>16</sub>	6	13	20	2 <sup>3</sup> / <sub>4</sub>	2 <sup>3</sup> / <sub>4</sub>	9	-	-	-	-	-	2 <sup>1</sup> / <sub>4</sub>	-	-	-	2 <sup>1</sup> / <sub>8</sub>	4	1 <sup>1</sup> / <sub>2</sub>	1 <sup>1</sup> / <sub>4</sub>	7 <sup>13</sup> / <sub>16</sub>					
Pier 8	A-R	I	16	7 <sup>13</sup> / <sub>16</sub>	12	18	5 <sup>1</sup> / <sub>16</sub>	9 <sup>1</sup> / <sub>16</sub>	7	3 <sup>1</sup> / <sub>16</sub>	6	13	20	2 <sup>3</sup> / <sub>4</sub>	2 <sup>3</sup> / <sub>4</sub>	9	-	-	-	-	-	2 <sup>1</sup> / <sub>4</sub>	-	-	-	2 <sup>1</sup> / <sub>8</sub>	4	1 <sup>1</sup> / <sub>2</sub>	1 <sup>1</sup> / <sub>4</sub>	7 <sup>13</sup> / <sub>16</sub>					
Pier 9, S. Brgs.	NG1,NG2,NG3,NG7	II	4	9 <sup>15</sup> / <sub>16</sub>	12	18	5 <sup>15</sup> / <sub>16</sub>	9 <sup>15</sup> / <sub>16</sub>	7	3 <sup>1</sup> / <sub>16</sub>	6	13 <sup>1</sup> / <sub>16</sub>	20	2	2	9 <sup>1</sup> / <sub>16</sub>	13	28 <sup>1</sup> / <sub>4</sub>	2	-	-	2 <sup>1</sup> / <sub>4</sub>	-	-	-	2 <sup>1</sup> / <sub>8</sub>	4	1 <sup>1</sup> / <sub>2</sub>	1 <sup>1</sup> / <sub>4</sub>	9 <sup>15</sup> / <sub>16</sub>					
Pier 9, S. Brgs.	A-R	II	16	9 <sup>15</sup> / <sub>16</sub>	12	18	5 <sup>15</sup> / <sub>16</sub>	9 <sup>15</sup> / <sub>16</sub>	7	3 <sup>1</sup> / <sub>16</sub>	6	13 <sup>1</sup> / <sub>16</sub>	20	2	2	9 <sup>1</sup> / <sub>16</sub>	13	28 <sup>1</sup> / <sub>4</sub>	2	-	-	2 <sup>1</sup> / <sub>4</sub>	-	-	-	2 <sup>1</sup> / <sub>8</sub>	4	1 <sup>1</sup> / <sub>2</sub>	1 <sup>1</sup> / <sub>4</sub>	9 <sup>15</sup> / <sub>16</sub>					
Pier 9, N. Brgs.	NG11, NG12, NG13	III	3	11 <sup>5</sup> / <sub>16</sub>	12	18	5 <sup>5</sup> / <sub>16</sub>	9 <sup>5</sup> / <sub>16</sub>	7	3 <sup>1</sup> / <sub>16</sub>	6	13 <sup>1</sup> / <sub>16</sub>	20	3	3	9 <sup>1</sup> / <sub>16</sub>	16	31 <sup>1</sup> / <sub>4</sub>	2 <sup>3</sup> / <sub>8</sub>	1 <sup>1</sup> / <sub>2</sub>	18	12 <sup>1</sup> / <sub>8</sub>	2	3	1 <sup>1</sup> / <sub>2</sub>	2	5 <sup>2</sup> / <sub>8</sub>	2 <sup>3</sup> / <sub>4</sub>	5 <sup>2</sup> / <sub>8</sub>	1 <sup>3</sup> / <sub>4</sub>	11 <sup>5</sup> / <sub>16</sub>				
Pier 9, N. Brgs.	A-P	III	14	11 <sup>5</sup> / <sub>16</sub>	12	18	5 <sup>5</sup> / <sub>16</sub>	9 <sup>5</sup> / <sub>16</sub>	7	3 <sup>1</sup> / <sub>16</sub>	6	13 <sup>1</sup> / <sub>16</sub>	20	3	3	9 <sup>1</sup> / <sub>16</sub>	16	31 <sup>1</sup> / <sub>4</sub>	2 <sup>3</sup> / <sub>8</sub>	1 <sup>1</sup> / <sub>2</sub>	18	12 <sup>1</sup> / <sub>8</sub>	2	3	1 <sup>1</sup> / <sub>2</sub>	2	5 <sup>2</sup> / <sub>8</sub>	2 <sup>3</sup> / <sub>4</sub>	5 <sup>2</sup> / <sub>8</sub>	1 <sup>3</sup> / <sub>4</sub>	11 <sup>5</sup> / <sub>16</sub>				
Pier 10	NG11, NG12, NG13	II	3	12 <sup>3</sup> / <sub>16</sub>	14	18	6 <sup>13</sup> / <sub>16</sub>	11 <sup>1</sup> / <sub>16</sub>	7	3 <sup>1</sup> / <sub>16</sub>	6	15 <sup>1</sup> / <sub>16</sub>	22	3	3	11 <sup>1</sup> / <sub>16</sub>	15	33 <sup>1</sup> / <sub>4</sub>	2 <sup>3</sup> / <sub>8</sub>	1 <sup>1</sup> / <sub>2</sub>	18	13 <sup>1</sup> / <sub>8</sub>	2	3	-	-	2 <sup>3</sup> / <sub>4</sub>	5 <sup>2</sup> / <sub>8</sub>	5 <sup>2</sup> / <sub>8</sub>	1 <sup>3</sup> / <sub>4</sub>	12 <sup>3</sup> / <sub>16</sub>				
Pier 10	A-N	II	13	12 <sup>3</sup> / <sub>16</sub>	14	18	6 <sup>13</sup> / <sub>16</sub>	11 <sup>1</sup> / <sub>16</sub>	7	3 <sup>1</sup> / <sub>16</sub>	6	15 <sup>1</sup> / <sub>16</sub>	22	3	3	11 <sup>1</sup> / <sub>16</sub>	15	33 <sup>1</sup> / <sub>4</sub>	2 <sup>3</sup> / <sub>8</sub>	1 <sup>1</sup> / <sub>2</sub>	18	13 <sup>1</sup> / <sub>8</sub>	2	3	-	-	2 <sup>3</sup> / <sub>4</sub>	5 <sup>2</sup> / <sub>8</sub>	5 <sup>2</sup> / <sub>8</sub>	1 <sup>3</sup> / <sub>4</sub>	12 <sup>3</sup> / <sub>16</sub>				
Pier 10	P	II	1	12 <sup>3</sup> / <sub>16</sub>	14	18	6 <sup>13</sup> / <sub>16</sub>	11 <sup>1</sup> / <sub>16</sub>	7	3 <sup>1</sup> / <sub>16</sub>	6	15 <sup>1</sup> / <sub>16</sub>	22	3	3	11 <sup>1</sup> / <sub>16</sub>	15	33 <sup>1</sup> / <sub>4</sub>	2 <sup>3</sup> / <sub>8</sub>	1 <sup>1</sup> / <sub>2</sub>	18	13 <sup>1</sup> / <sub>8</sub>	2	3	-	-	2 <sup>3</sup> / <sub>4</sub>	5 <sup>2</sup> / <sub>8</sub>	5 <sup>2</sup> / <sub>8</sub>	1 <sup>3</sup> / <sub>4</sub>	12 <sup>3</sup> / <sub>16</sub>				
Pier 11	NG11, NG12, NG13, P	Fix	4	6	-	-	-	-	-	-	-	-	-	-	-	-	-	-	-	-	-	-	-	-	-	-	-	-	-	-	-	-	-		
Pier 11	A-N	Fix	-	-	-	-	-	-	-	-	-	-	-	-	-	-	-	-	-	-	-	-	-	-	-	-	-	-	-	-	-	-	-	-	

Notes:  
Anchor bolts shall be ASTM F1554 all-thread (or an Engineer-approved alternate material) of the grade(s) and diameter(s) specified. ASTM A307 Grade C anchor bolts may be used in lieu of ASTM F1554 Grade 36 (F<sub>y</sub>=36ksi). The corresponding specified grade of AASHTO M314 anchor bolts may be used in lieu of ASTM F1554.  
Anchor bolts at fixed bearings may be either cast in place or installed in holes drilled after the supported member is in place.  
Anchor bolts for side retainers may be cast in place or installed in holes drilled before or after members are in place.  
Drilled and set anchor bolts shall be installed according to Article 521.06 of the Standard Specifications.  
Side retainers and other steel members required for the bearing assembly shall be included in the cost of "Furnishing Elastomeric Bearing Assembly, Type I".  
The structural steel plates of the Bearing Assembly shall conform to the requirements of AASHTO M 270 Grade 36.

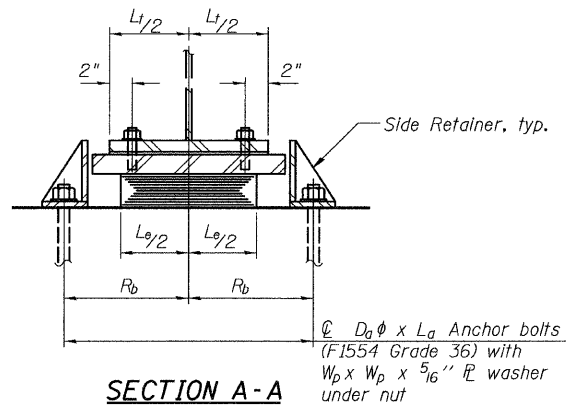
**BILL OF MATERIAL**

Item	Unit	Total
Furnishing Elastomeric Bearing Assembly Type I	Each	46
* Anchor Bolts, 1"	Each	132
* Anchor Bolts, 1 <sup>1</sup> / <sub>4</sub> "	Each	8

\* NOT IN CONTRACT

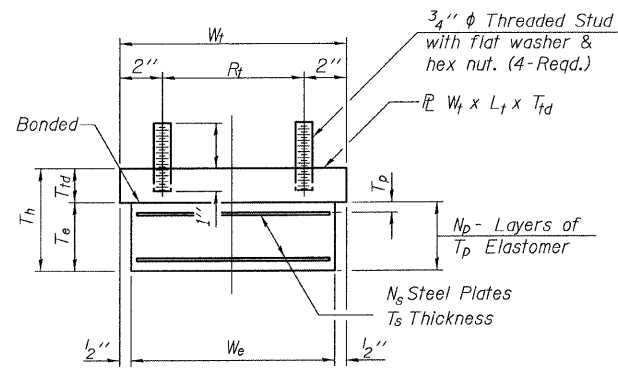


**ELEVATION AT ABUT.**



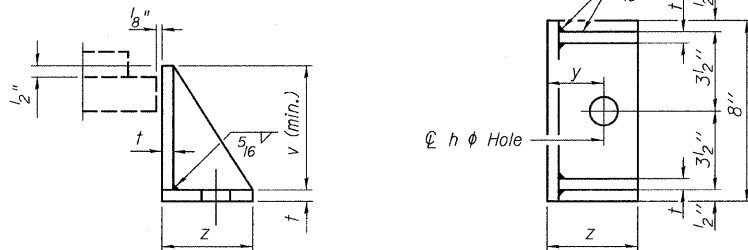
**SECTION A-A**

**TYPE I ELASTOMERIC EXP. BRG.**



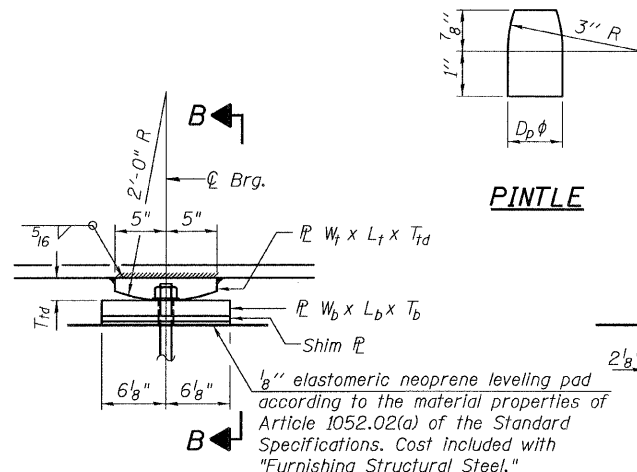
**BEARING ASSEMBLY**

Note:  
Shim plates shall not be placed under Bearing Assembly.



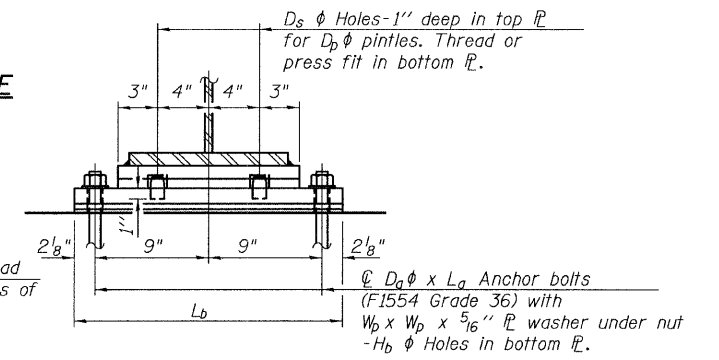
**SIDE RETAINER**

Equivalent rolled angle with stiffeners will be allowed in lieu of welded plates.



**ELEVATION AT PIER**

**FIXED BEARING ASSEMBLY - PIER 7**



**SECTION B-B**

**ELASTOMERIC BEARING TYPE I  
STRUCTURE NO. 016-3240**

I-2E-1

11-1-09

<b>TYLIN INTERNATIONAL</b>	DESIGNED - DY, LS	REVISIONS		SHEET NO. 30  33 SHEETS	F.A.I. RTE. 55	SECTION 0711.2R & 1011.1BR	COUNTY COOK	TOTAL SHEETS 200	SHEET NO. 197	
	CHECKED - AMD, LS	NAME	DATE							
	DRAWN - DY, LS									
	CHECKED - AMD, LS									
DATE - 08/02/10				CONTRACT NO. 60L39						
								FED. ROAD DIST. NO. 1   ILLINOIS   FED. AID PROJECT		