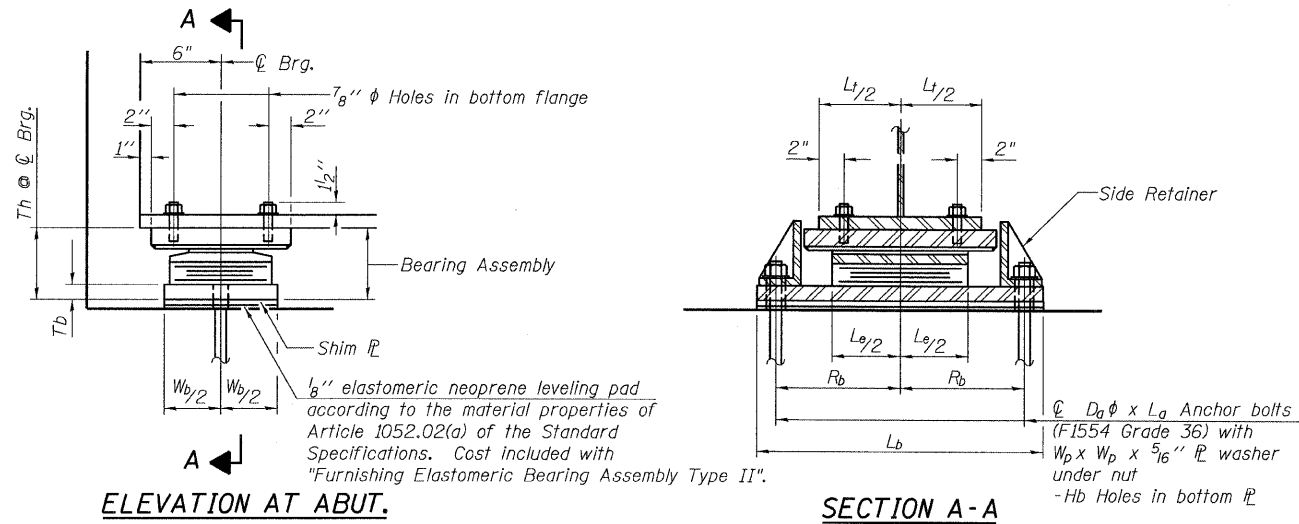
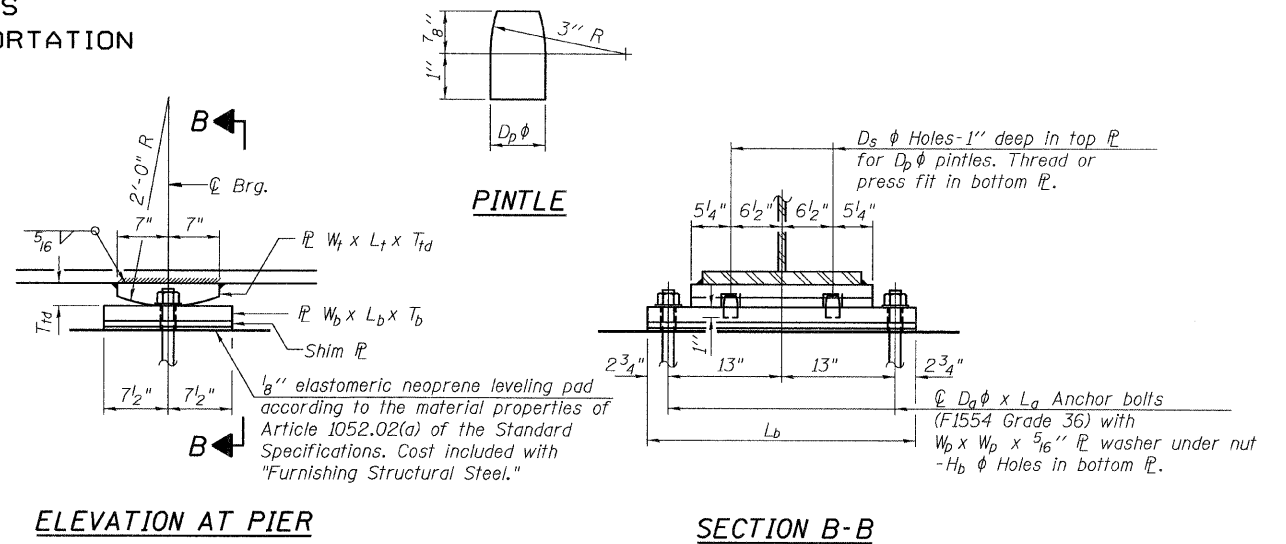


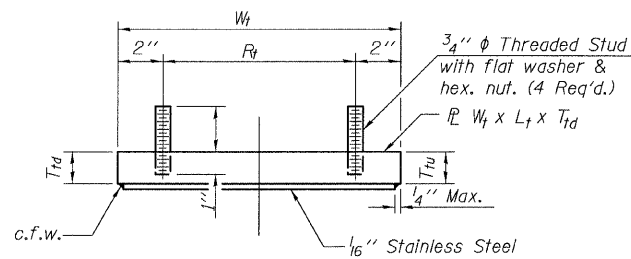
STATE OF ILLINOIS  
DEPARTMENT OF TRANSPORTATION



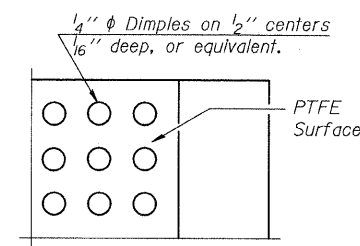
**TYPE II ELASTOMERIC EXP. BRG.**



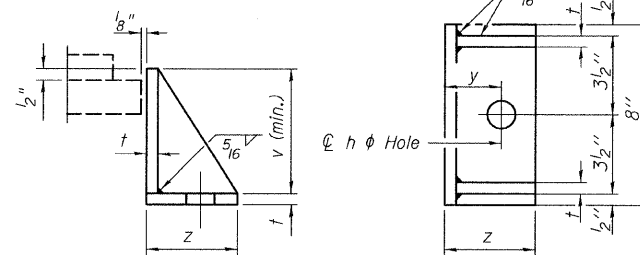
**FIXED BEARING ASSEMBLY - PIER II**



**TOP BEARING ASSEMBLY**

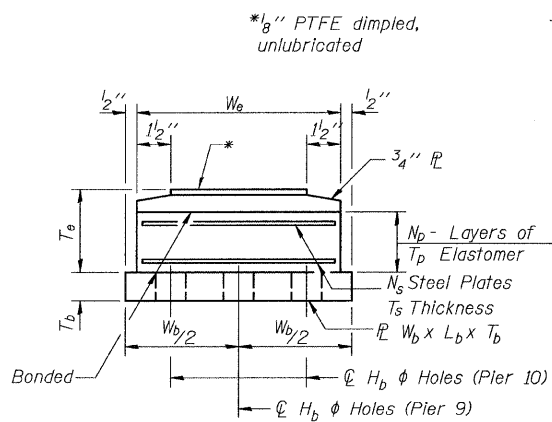


**PLAN-PTFE SURFACE**

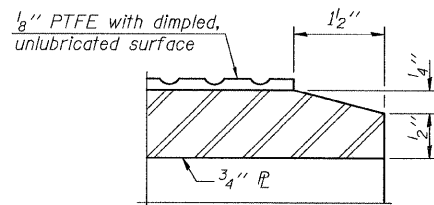


**SIDE RETAINER - PIER 9 (SOUTH & NORTH) & PIER 10**

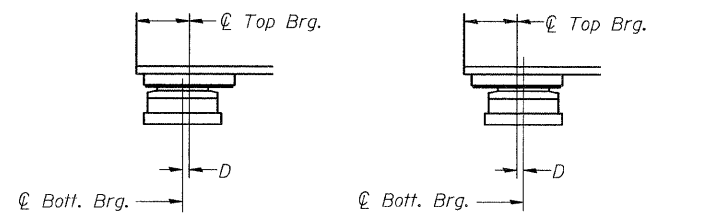
Equivalent rolled angle with stiffeners will be allowed in lieu of welded plates.



**BOTTOM BEARING ASSEMBLY**



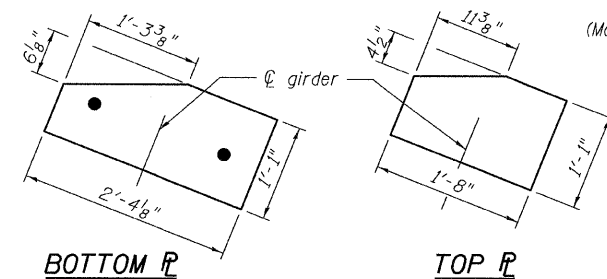
**SECTION THRU PTFE**



**BELOW 50°F.** (Move bott. brg. away from fixed brg.) **ABOVE 50°F.** (Move bott. brg. toward fixed brg.)

**SETTING ANCHOR BOLTS AT EXP. BRG.**

$D = 1/8$ " per each 100' of expansion for every 15° temp. change from the normal temp. of 50°F.



**BOTTOM  $\mathcal{R}$**

**TOP  $\mathcal{R}$**

**CLIPPING P'S @ S. PIER 9**

**BILL OF MATERIAL**

Item	Unit	Total
Furnishing Elastomeric Bearing Assembly Type II	Each	37
* Anchor Bolts, 1/2"	Each	42

\* NOT IN CONTRACT

**Notes:**  
 Anchor bolts shall be ASTM F1554 all-thread (or an Engineer-approved alternate material) of the grade(s) and diameter(s) specified. ASTM A307 Grade C anchor bolts may be used in lieu of ASTM F1554 Grade 36 (Fy=36ksi). The corresponding specified grade of AASHTO M314 anchor bolts may be used in lieu of ASTM F1554.  
 Anchor bolts at fixed bearings may be either cast in place or installed in holes drilled after the supported member is in place.  
 Anchor bolts for Type II bearings shall be placed in holes drilled in the concrete through holes in the bottom bearing plate after members are in place. Side retainers shall be placed after bolts are installed.  
 Drilled and set anchor bolts shall be installed according to Article 521.06 of the Standard Specifications.  
 Side retainers and other steel members required for the bearing assembly shall be included in the cost of "Furnishing Elastomeric Bearing Assembly, Type II".  
 The 1/8" PTFE sheet shall be bonded directly to the top steel plate with a two-component, medium viscosity epoxy resin, conforming to the requirements of the Federal Specification MMM-A-134, Type I. The bond agent shall be applied on the full area of the contact surfaces.  
 Bonding of 1/8" PTFE sheet during vulcanizing process will be permitted provided the process and method of adjusting assembly height is approved by the Engineer. The structural steel plates of the Bearing Assembly shall conform to the requirements of AASHTO M 270 Grade 36.

For bearing dimensions refer to the table on sheet 30.

**ELASTOMERIC BEARING TYPE II  
STRUCTURE NO. 016-3240**

I-2E-2

11-1-09

**TYLIN INTERNATIONAL**

DESIGNED -	DY, LS	REVISIONS	
CHECKED -	AMD, LS	NAME	DATE
DRAWN -	DY, LS		
CHECKED -	AMD, LS		
DATE -	08/02/10		

SHEET NO. 31	F.A.I RTE.	SECTION	COUNTY	TOTAL SHEETS	SHEET NO.
33 SHEETS	55	0711.2R & 1011.1BR	COOK	200	198
			CONTRACT NO. 60L39		
			FED. ROAD DIST. NO. 1 ILLINOIS FED. AID PROJECT		