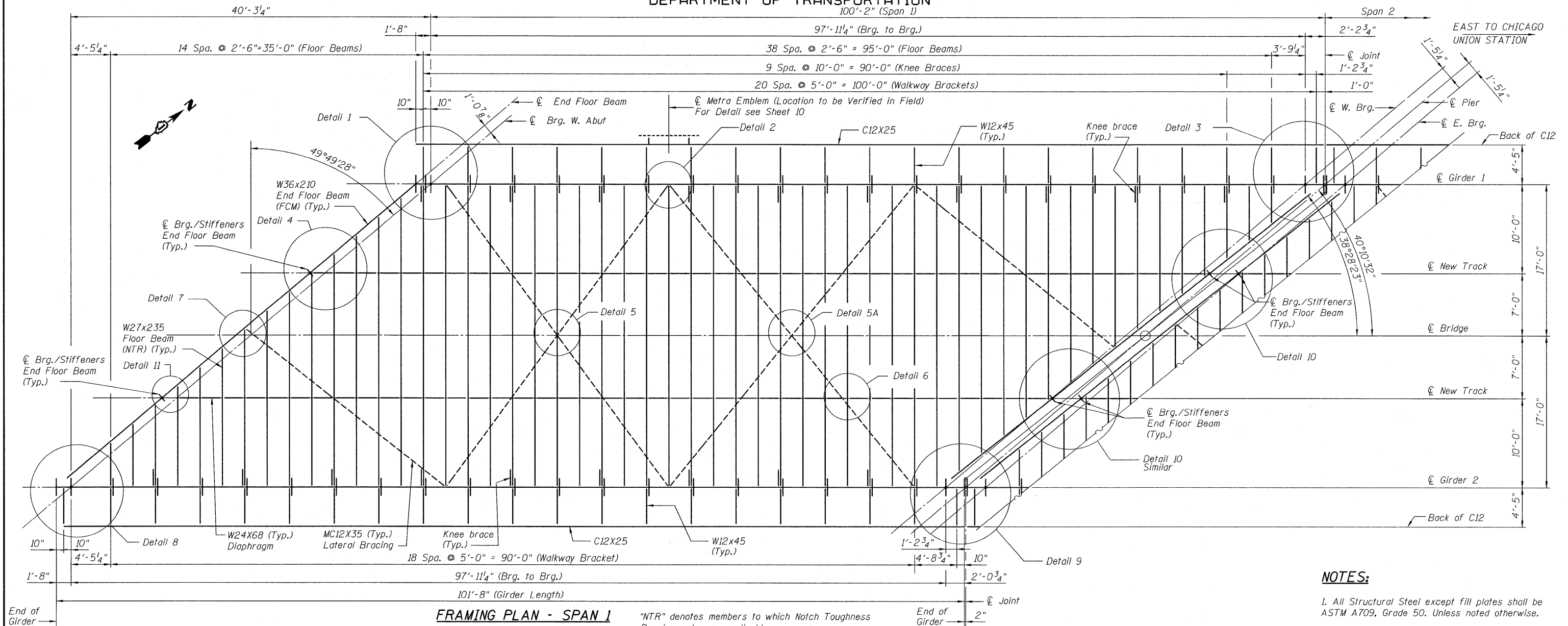


STATE OF ILLINOIS
DEPARTMENT OF TRANSPORTATION
100'-2" (Span 1)

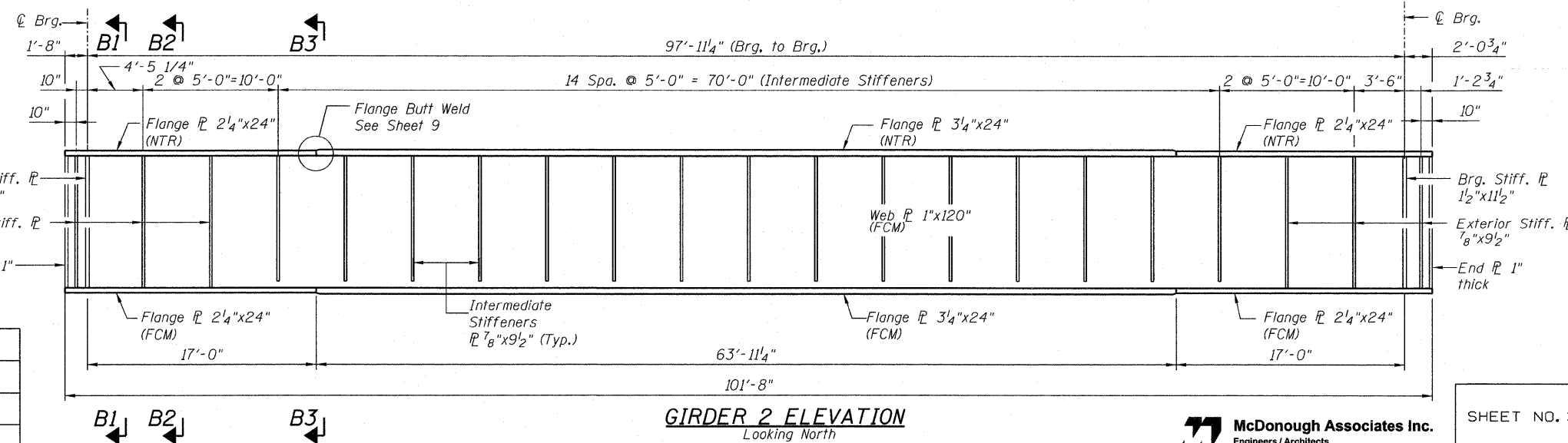


FRAMING PLAN - SPAN 1

"NTR" denotes members to which Notch Toughness Requirements are applicable.

NOTES:

1. All Structural Steel except fill plates shall be ASTM A709, Grade 50. Unless noted otherwise.
2. "NTR" Indicates Notch Toughness Requirements.
3. All Floor Beams shall be "NTR".
4. FCM Denotes Fracture Critical Members.
5. For all FCM Members NTR, shall also be applied.
6. For Sections B1, B2 & B3 see Sheet 5.
7. For Details see Sheets 5 through 9.
8. See Sheet 6 for location of jacking stiffeners.
9. See Sheet 10 for Camber Diagram.



GIRDER 2 ELEVATION
Looking North

DESIGNED	-KJH
CHECKED	-MGB
DRAWN	-RJ
CHECKED	-MGB

McDonough Associates Inc.
Engineers / Architects
130 East Randolph Street Chicago, Illinois 60601

SHEET NO. 3 13 SHEETS	F.A.P R.T.E.	SECTION	COUNTY	TOTAL SHEETS	SHEET NO.
	330	2010-074-F	COOK	15	5
DATE: 08/12/10			ILLINOIS FED. AID PROJECT		
CONTRACT NO. 60L60					

FRAMING PLAN AND DETAILS
SPAN 1
STRUCTURE NO. 016-6201