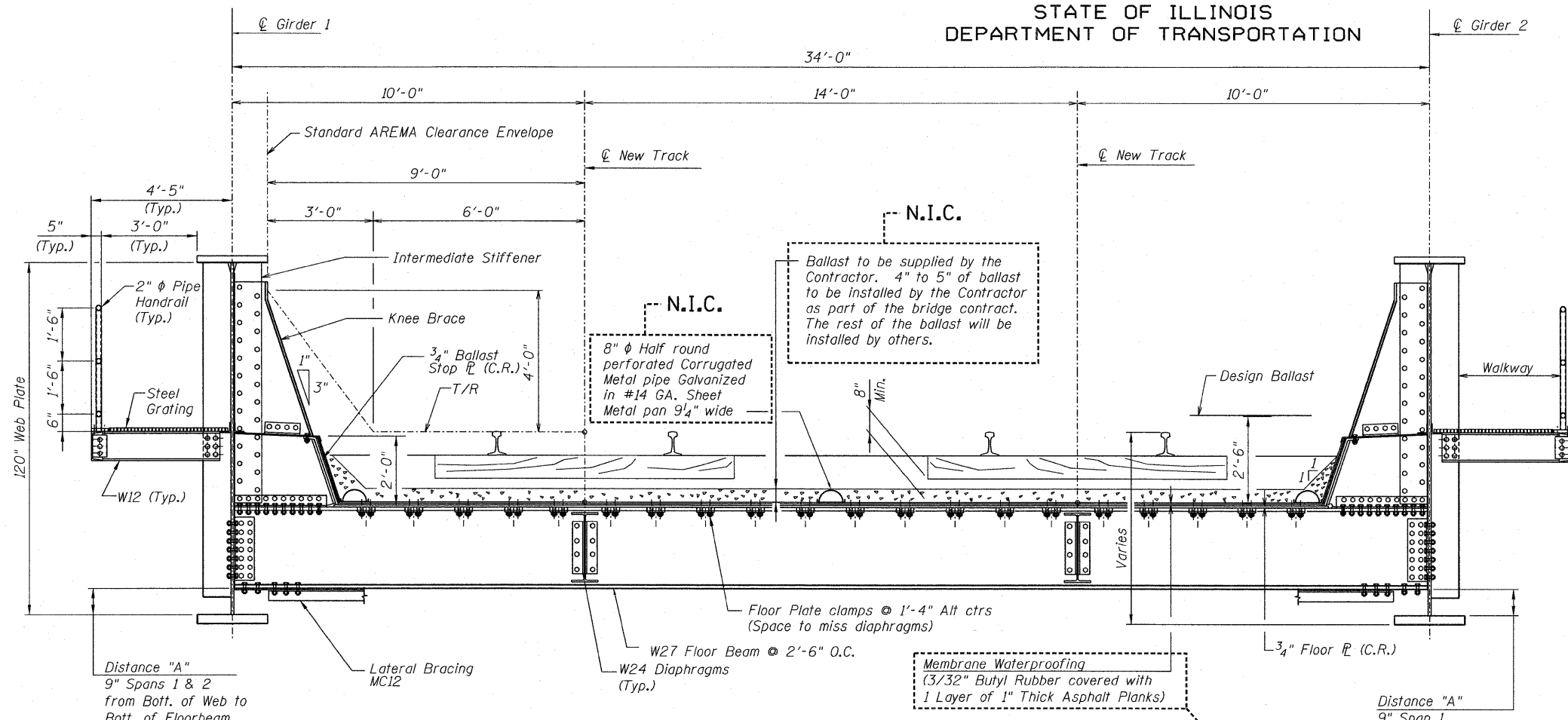
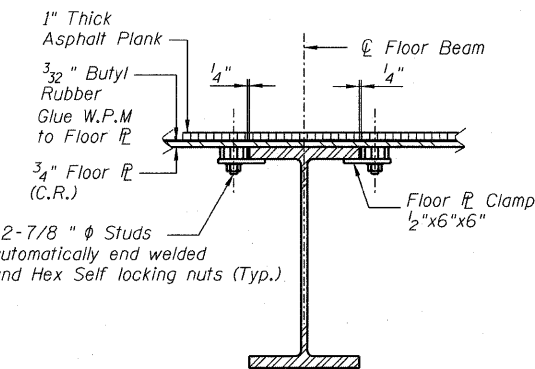


STATE OF ILLINOIS  
DEPARTMENT OF TRANSPORTATION

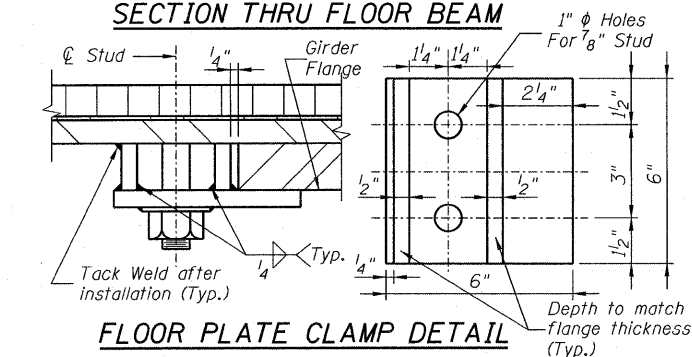


TYPICAL BRIDGE CROSS SECTION LOOKING EAST

Scale: 3/16"=1'-0"

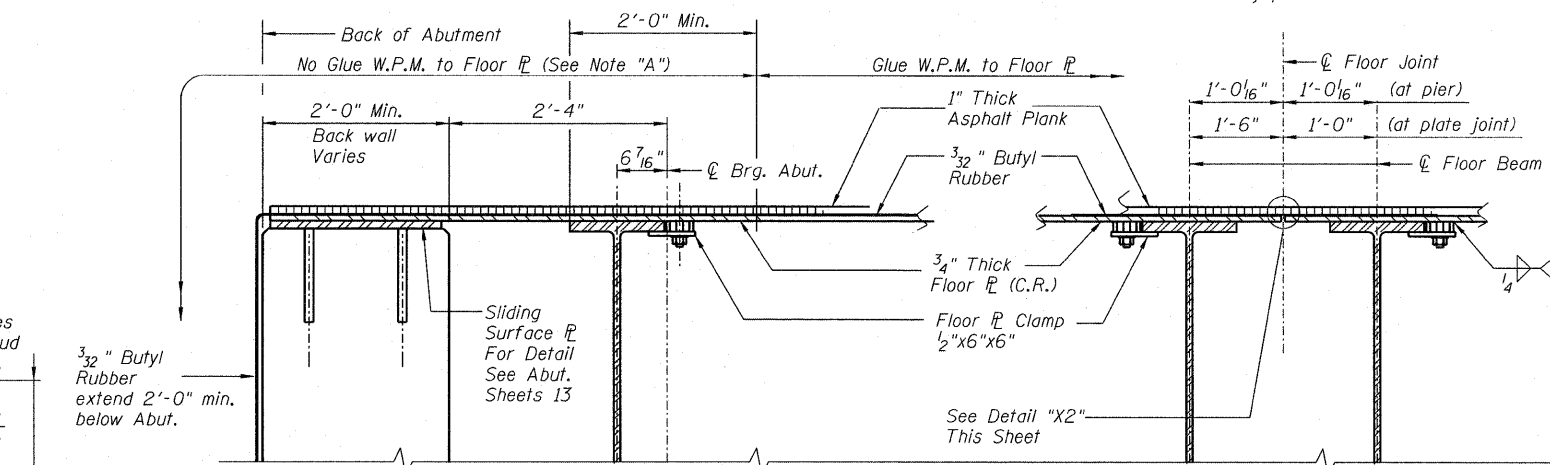


SECTION THRU FLOOR BEAM



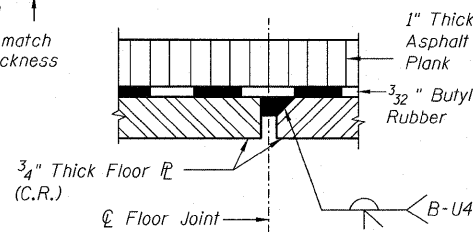
FLOOR PLATE CLAMP DETAIL

DESIGNED	-KJH
CHECKED	-MGB
DRAWN	-RJ
CHECKED	-MGB

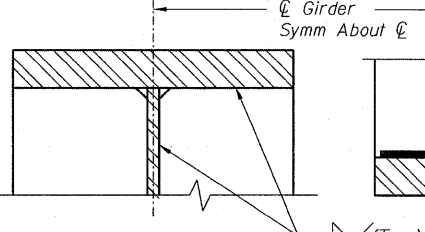


SECTION THRU ABUTMENT

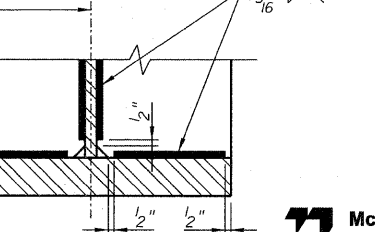
SECTION Z-Z (thru pier and plate joint)



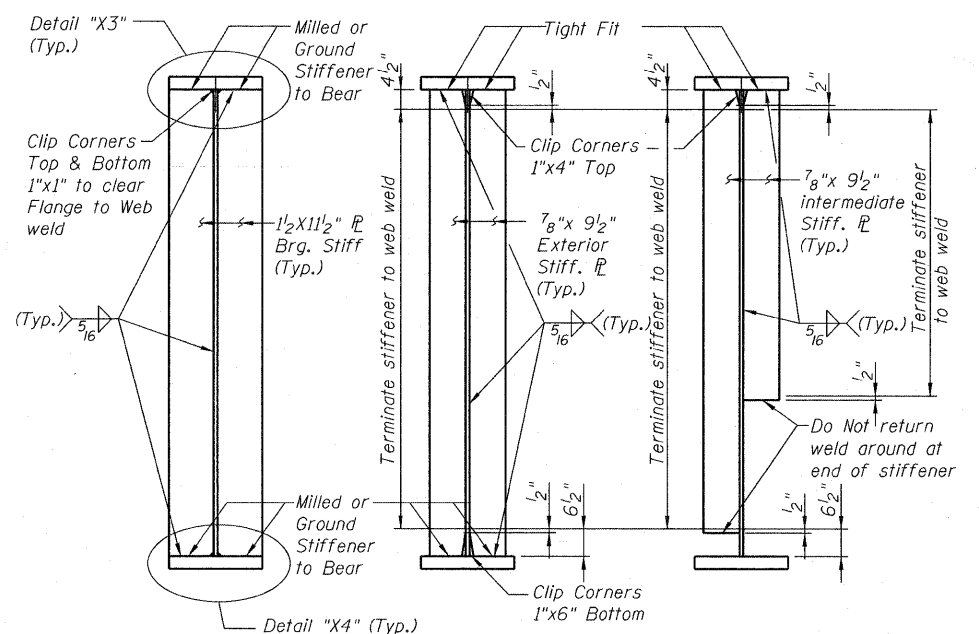
DETAIL "X2"



DETAIL "X3"



DETAIL "X4"



SECTION B1-B1 AT BEARING SECTION B2-B2 AT EXTERIOR SECTION B3-B3 AT INTERMEDIATE

TYPICAL STIFFENER DETAILS

NOTES:

(C.R.) Denotes Corrosion Resistant.

Note "A"  
No Glue. The Water Proofing Membrane (W.P.M.) (3/32" Butyl Rubber) in this area shall not adhere to the Floor Plate or the Abutment Backwall.

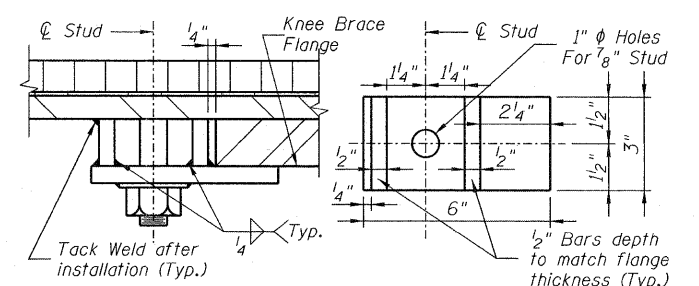
Membrane Waterproofing - (3/32") thickness Butyl Rubber covered with 1 - (1") thick Asphalt Plank. The Membrane shall be Bonded to the Floor and Ballast Stop Plates with Adhesive Applied to the entire Surface in accordance with the Recommendations of the Membrane Manufacturer, the Protective Panels shall be Bonded to the Membrane and to each other with the same Adhesive used for bonding the Membrane and be compatible with all materials it contacts.

The floor plate clamp is to be installed square with the beam, any clamps that are not square shall be corrected at the Contractor's expense.

Floor beam bracket flange plate shall be flat and at right angles to the bracket web after welding has been completed.

All shop and field welds on the deck shall be continuous unless otherwise shown and shall result in a watertight deck.

Remove sharp edges or any projections from floor plates or welds that may damage the Butyl Rubber Membrane.



BALLAST STOP PLATE CLAMP DETAIL

TYPICAL CROSS SECTION AND STEEL DETAILS-1  
STRUCTURE NO. 016-6201

SHEET NO. 5 13 SHEETS	F.A.P R.T.E.	SECTION	COUNTY	TOTAL SHEETS	SHEET NO.
	330	2010-074-F	COOK	15	7
DATE: 08/12/10			ILLINOIS FED. AID PROJECT		
CONTRACT NO. 60L60					

McDonough Associates Inc.  
Engineers / Architects  
130 East Randolph Street Chicago, Illinois 60601