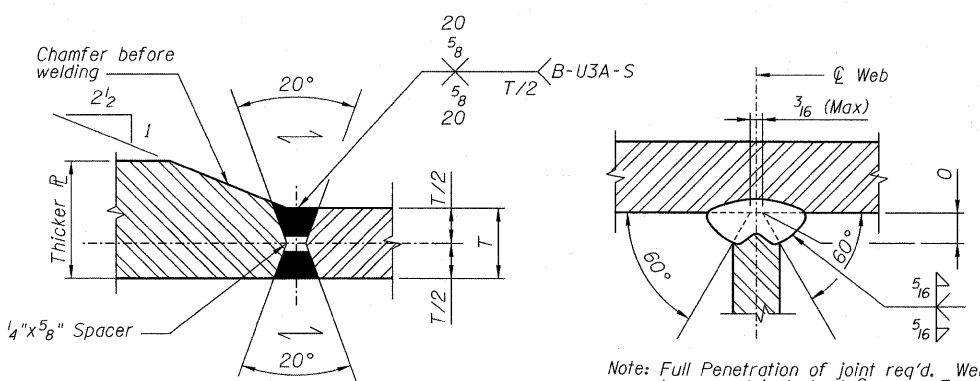
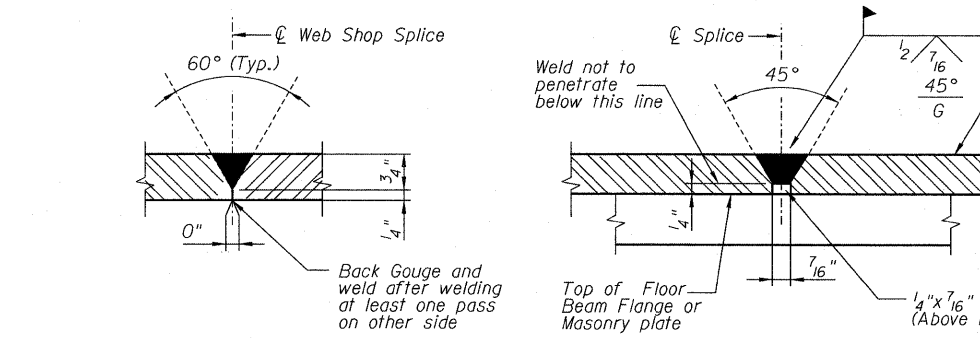


STATE OF ILLINOIS
DEPARTMENT OF TRANSPORTATION

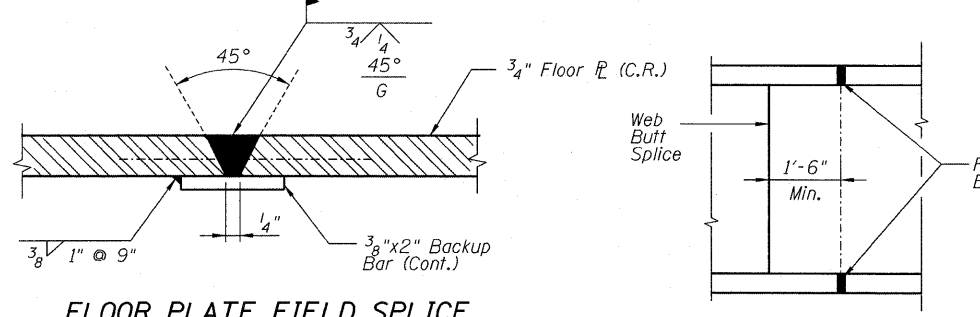
N.I.C.



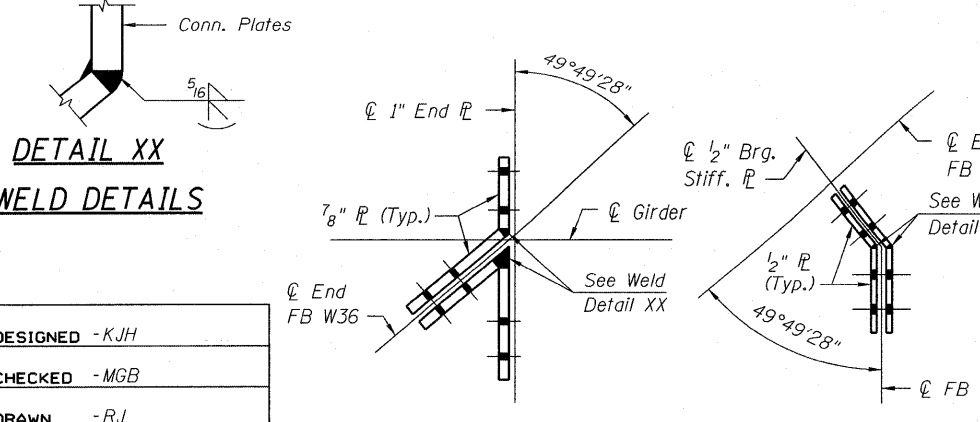
Note: Gouge root to sound metal before welding second side. Grind flush both sides.
Indicates direction of Grinding.



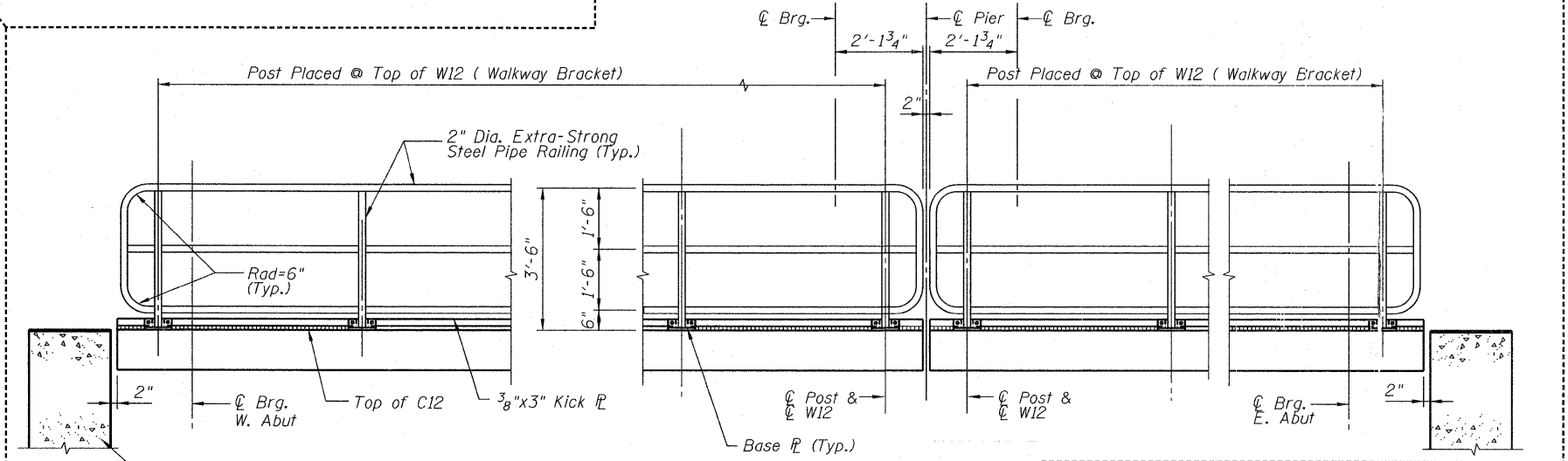
Back Gouge and weld after welding at least one pass on other side.



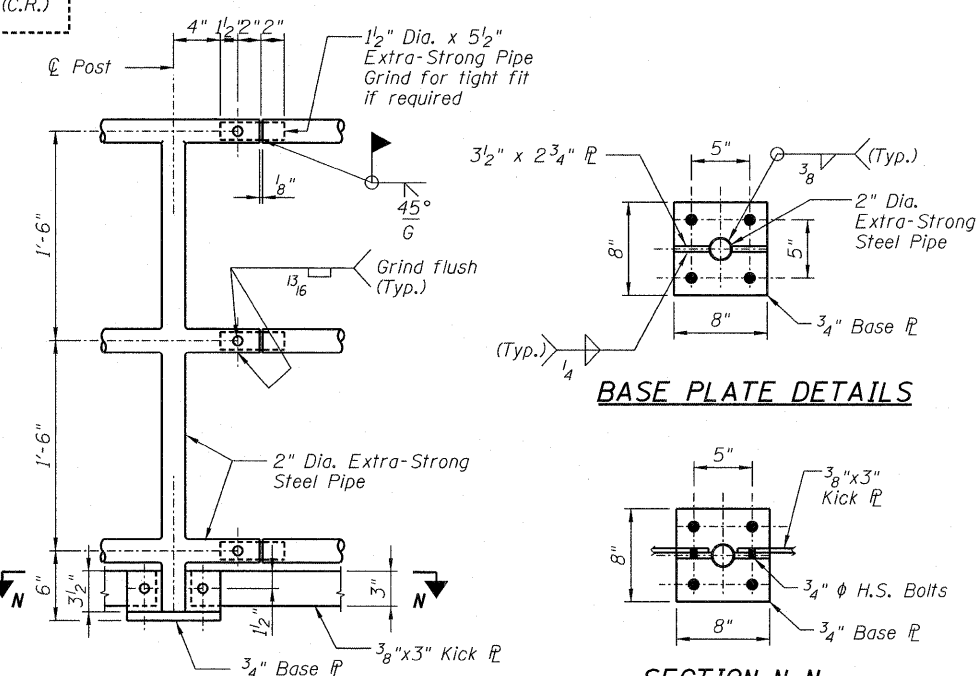
Web Butt Splice



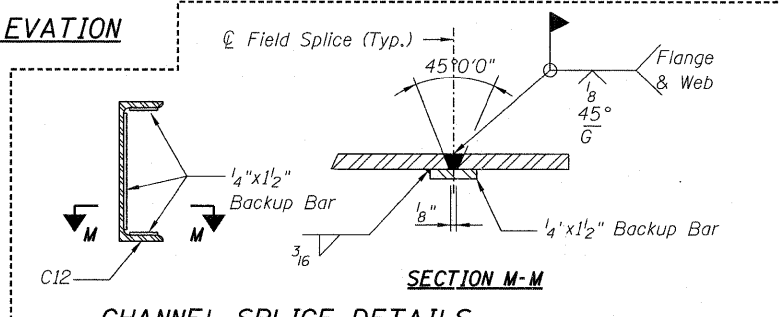
DESIGNED - KJH
CHECKED - MGB
DRAWN - RJ
CHECKED - MGB



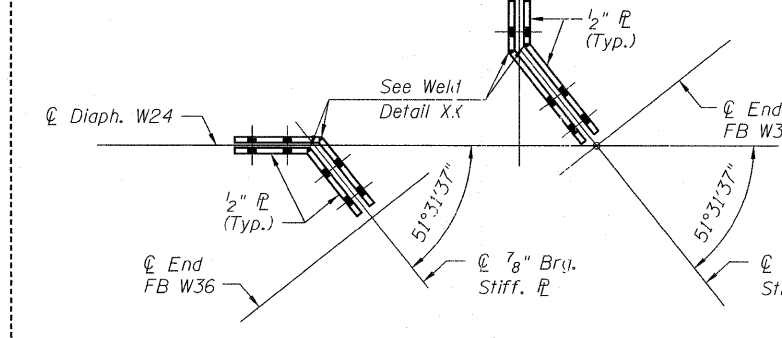
SECTION S-S RAILING ELEVATION



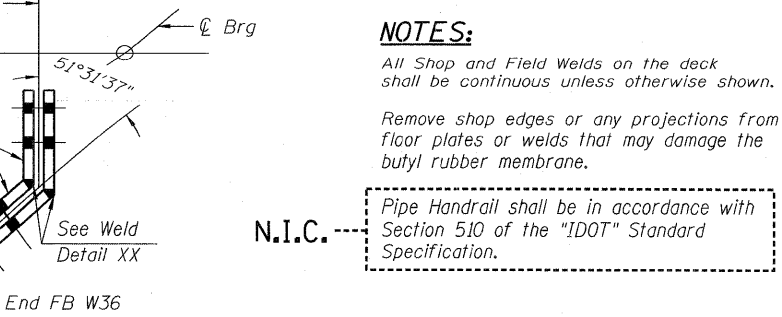
RAILING SPLICE AND POST DETAILS



SECTION M-M CHANNEL SPLICE DETAILS



CONN. PLATE-4 CONN. PLATE-4A



CONN. PLATE-3 CONN. PLATE-3A

NOTES:
All Shop and Field Welds on the deck shall be continuous unless otherwise shown.
Remove shop edges or any projections from floor plates or welds that may damage the butyl rubber membrane.

N.I.C. Pipe Handrail shall be in accordance with Section 510 of the "IDOT" Standard Specification.

STEEL DETAILS-5
STRUCTURE NO. 016-6201

SHEET NO. 9 13 SHEETS	F.A.P. RTE.	SECTION	COUNTY	TOTAL SHEETS	SHEET NO.
	330	2010-074-F	COOK	15	11
DATE: 08/12/10			ILLINOIS FED. AID PROJECT		
CONTRACT NO. 60L60					

McDonough Associates Inc.
Engineers / Architects
130 East Randolph Street Chicago, Illinois 60601