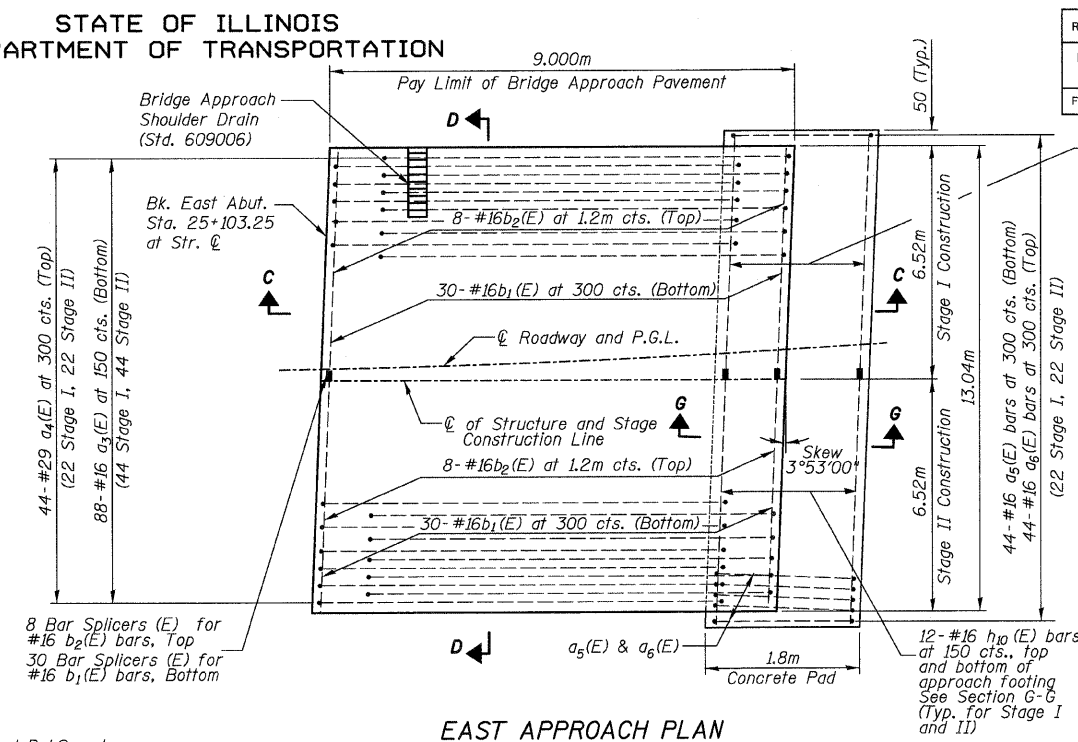
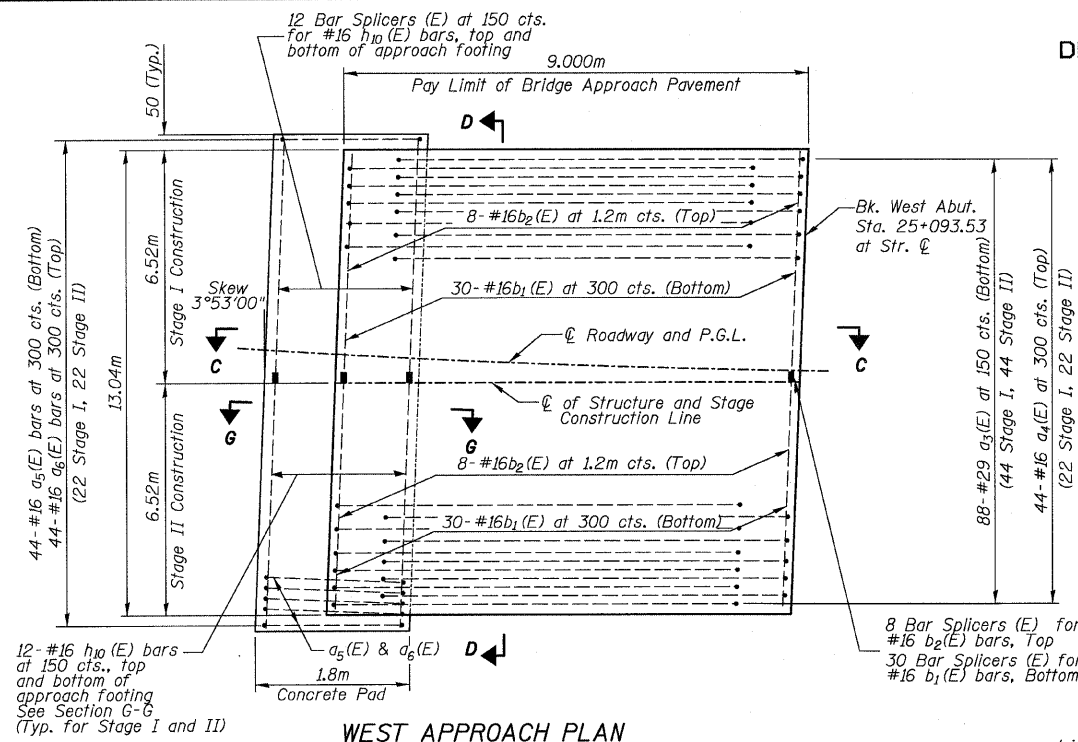


STATE OF ILLINOIS
DEPARTMENT OF TRANSPORTATION

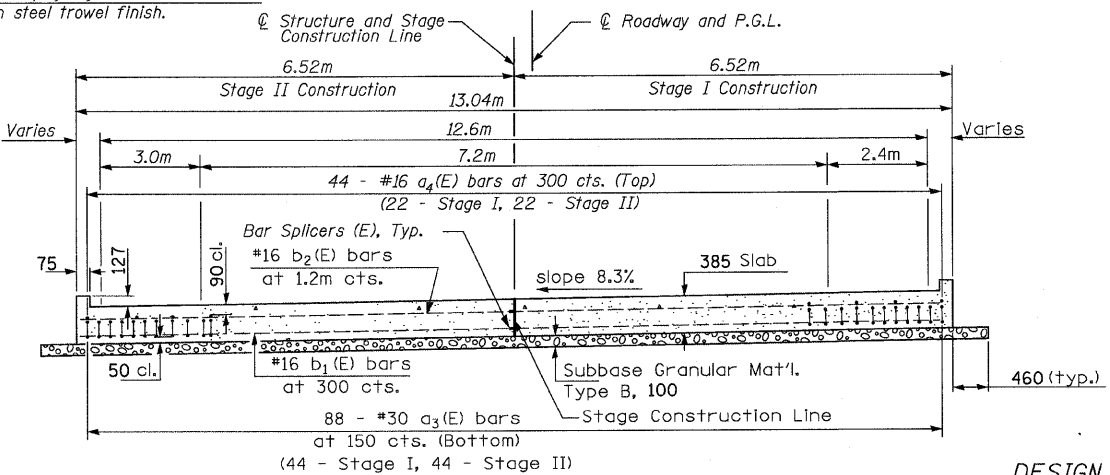
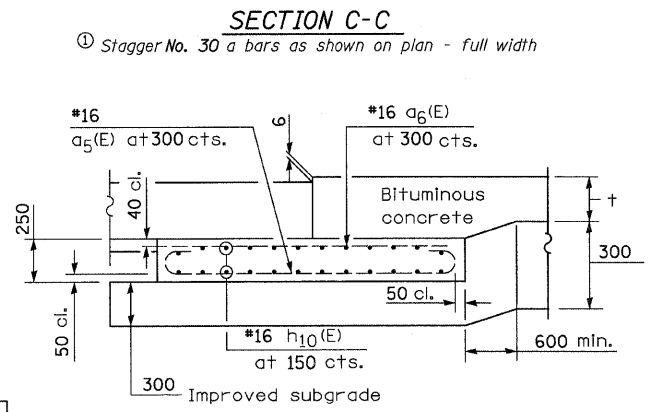
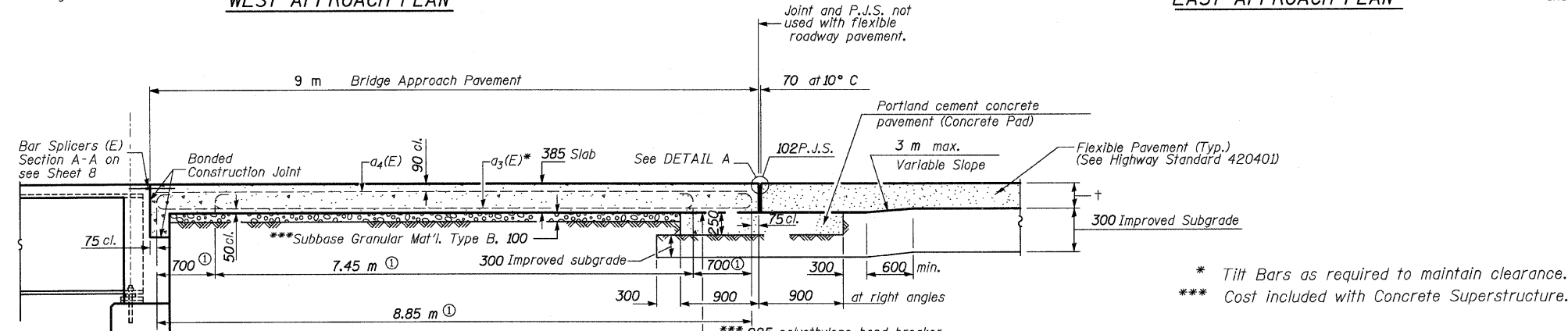
ROUTE NO.	SECTION	COUNTY	TOTAL SHEETS	SHEET NO.	SHEET NO. 9
FAP 303 IL 173	2010-086-F	LAKE	29	9	17 SHEETS
FED. ROAD DIST. NO. 7		ILLINOIS	FED. AID PROJECT-		



**BRIDGE APPROACH SLAB
BILL OF MATERIAL**

Bar	No.	Size	Length (m)	Shape
a ₃ (E)	176	#29	8.987	U
a ₄ (E)	88	#16	8.850	—
a ₅ (E)	88	#16	2.462	U
a ₆ (E)	88	#16	1.700	—
b ₁ (E)	120	#16	6.455	—
b ₂ (E)	32	#16	6.455	—
h ₁₀ (E)	96	#16	6.505	—
Concrete Structures			m ³	12
Concrete Superstructure			m ³	92
Reinforcement Bars, Epoxy Coated			kg	12,280

The above table contains information and quantities for two Bridge Approach Slabs.
See Sheet 10 for Bar Diagrams.



DESIGN STRESSES
f_y = 400 MPa
f'c = 24 MPa
n = 8.5

NOTES:
THICKNESS-"="Thickness of Pavement.
All dimensions are in millimeters unless otherwise shown.
See Sheet 16 for Bar Splicer Details.
See Sheet 10 for Bar Bending Details.

BRIDGE APPROACH SLAB -1
FAP 303 IL. ROUTE 173
OVER WEST BOAT CHANNEL
SECTION 2010-086-F
LAKE COUNTY
STATION 25+098.390
STRUCTURE NO. 049-0055

DESIGNED	RGT
CHECKED	RJC/JRF
DRAWN	RDS
CHECKED	PAT2

