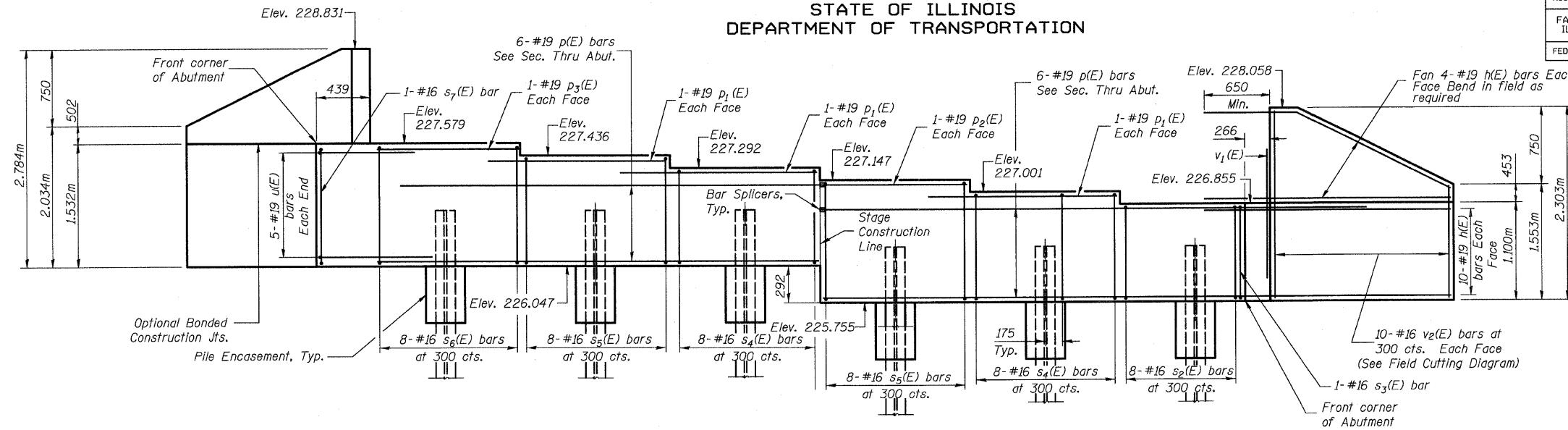
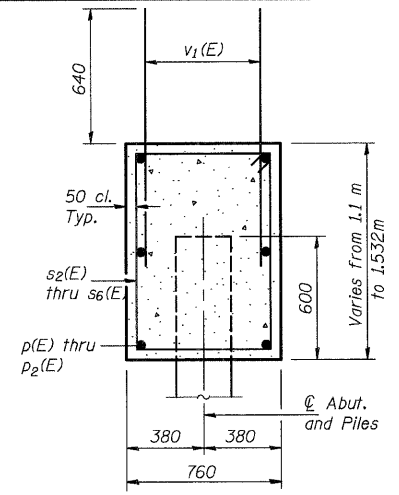


ROUTE NO.	SECTION	COUNTY	TOTAL SHEETS	SHEET NO.	SHEET NO. 17 23 SHEETS
FAP 303 IL 173	2010-086-F	LAKE	29	28	
FED. ROAD DIST. NO. 7		ILLINOIS	FED. AID PROJECT-		

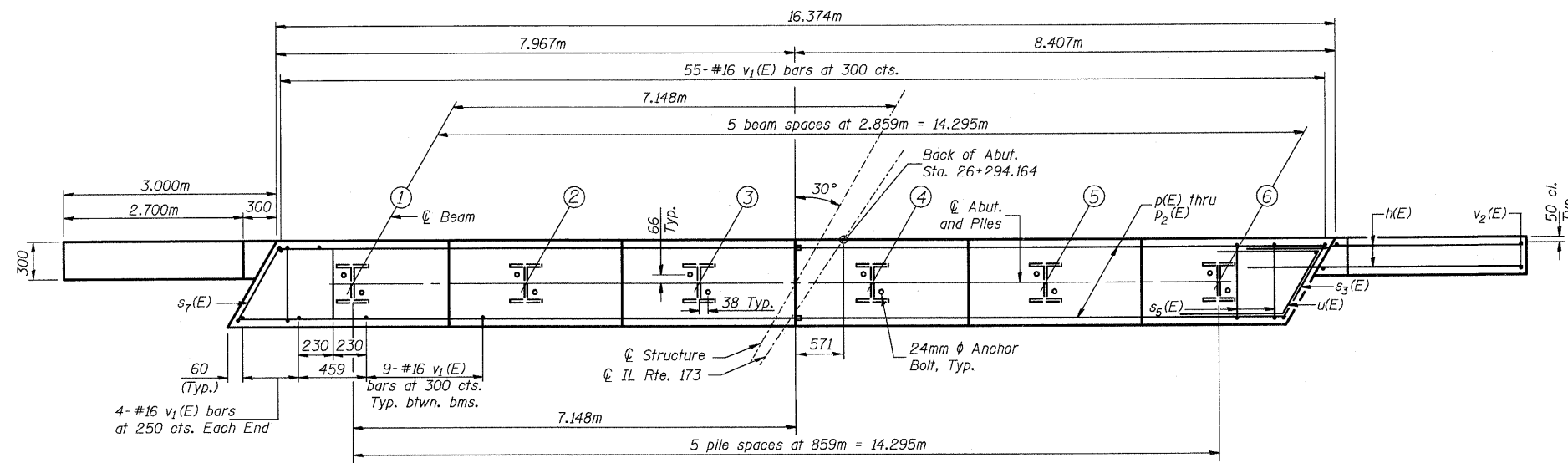
STATE OF ILLINOIS
DEPARTMENT OF TRANSPORTATION



EAST ABUTMENT ELEVATION
(Looking East)



SEC. THRU ABUT.
Dimensions at right angle to abutment

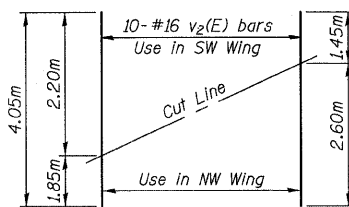


PLAN

PILE DATA

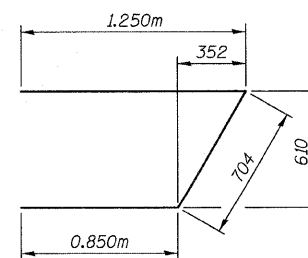
Type: HP 310x79
Allowable Capacity Required: 580kN
Allowable Capacity Available: 580kN
Est. Length: 20.5m
No. Production Piles Required: 5
No. Test Piles: 1

DESIGNED	JRF
CHECKED	RCJ
DRAWN	RDS
CHECKED	JRF

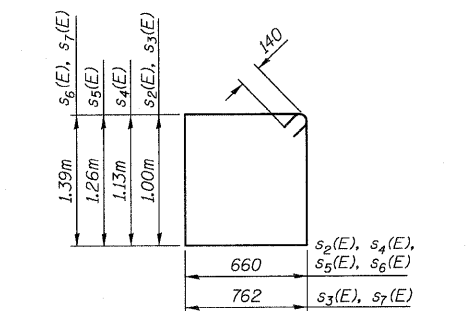


FIELD CUTTING DIAGRAM

Order v2(E) full length. Cut as shown and use remainder of bars in opposite wingwall.



BAR u(E)



BARS s2(E), s3(E), s4(E), s5(E), s6(E)

MINIMUM BAR LAP
#19 bar = 850

NOTES

Pour steps monolithically with cap.

Place reinforcement in cap to miss anchor bolts.

Reinforcement bars designated (E) shall be epoxy coated.

All dimensions are in millimeters (mm) except as noted.

Stage Construction Line differs from Stage Construction Line in the deck above due to the skew of the bridge.

See Sheet 21 for Pile Encasement details.

**EAST ABUTMENT
BILL OF MATERIAL**

Bar	No.	Size	Length	Shape
h(E)	56	#19	3.750	
p(E)	12	#19	7.887	
p1(E)	6	#19	3.540	
p2(E)	2	#19	2.779	
p3(E)	2	#19	2.170	
s2(E)	8	#16	3.600	□
s3(E)	1	#16	3.804	□
s4(E)	16	#16	3.860	□
s5(E)	16	#16	4.128	□
s6(E)	8	#16	4.390	□
s7(E)	1	#16	4.594	□
u(E)	10	#19	2.804	▤
v1(E)	108	#16	1.280	
v2(E)	20	#16	4.050	
Concrete Structures			m ³	20
Concrete Encasement			m ³	2.0
Reinforcement Bars Epoxy Coated			kg	1,470
Furnishing Steel Piles HP310x79			m	105
Driving Steel Piles			m	105
Test Pile, HP310x79			each	1
Structure Excavation			m ³	550

**EAST ABUTMENT
FAP 303 IL. ROUTE 173
OVER EAST BOAT CHANNEL
SECTION 2010-086-F
LAKE COUNTY
STATION 26+271.906
STRUCTURE NO. 049-0198**