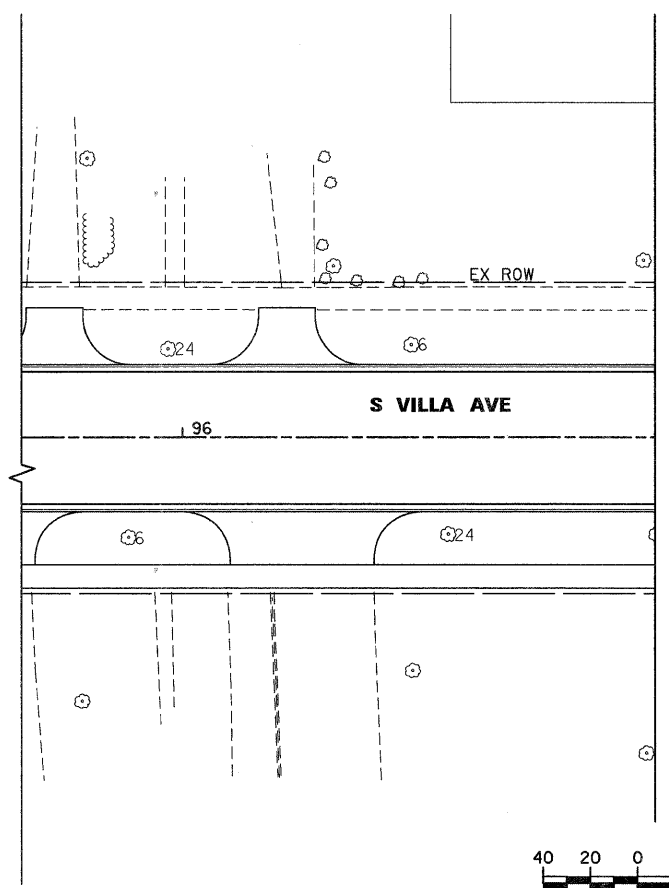
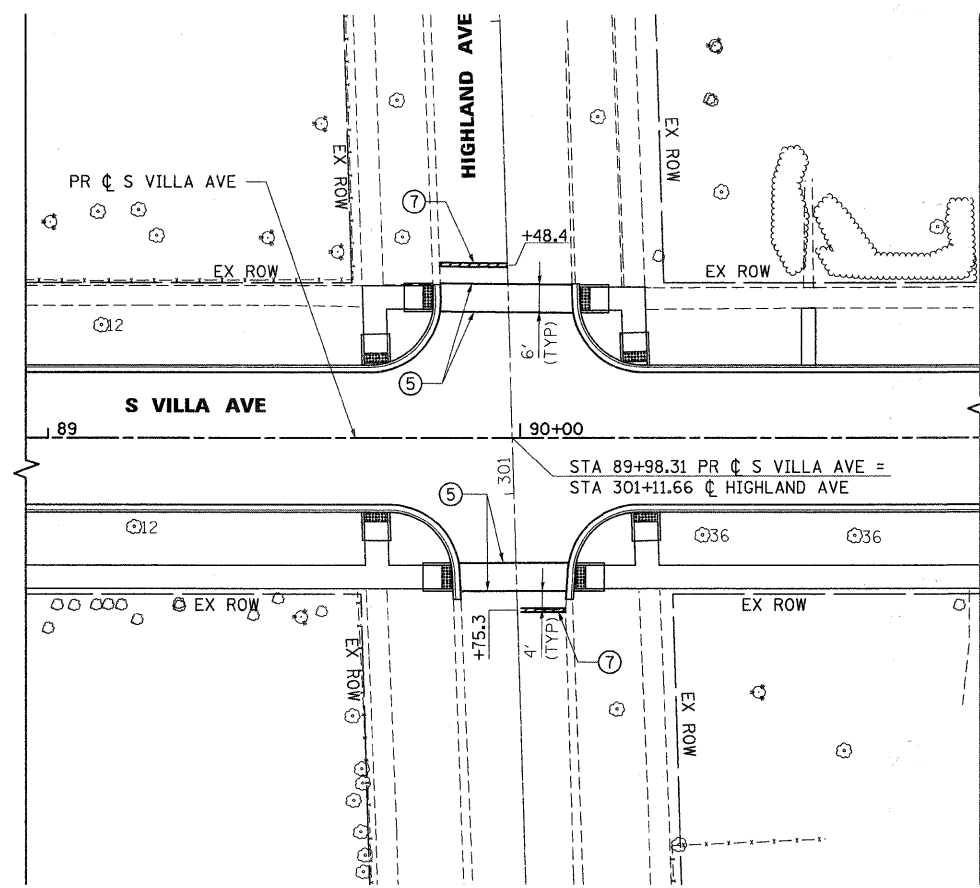
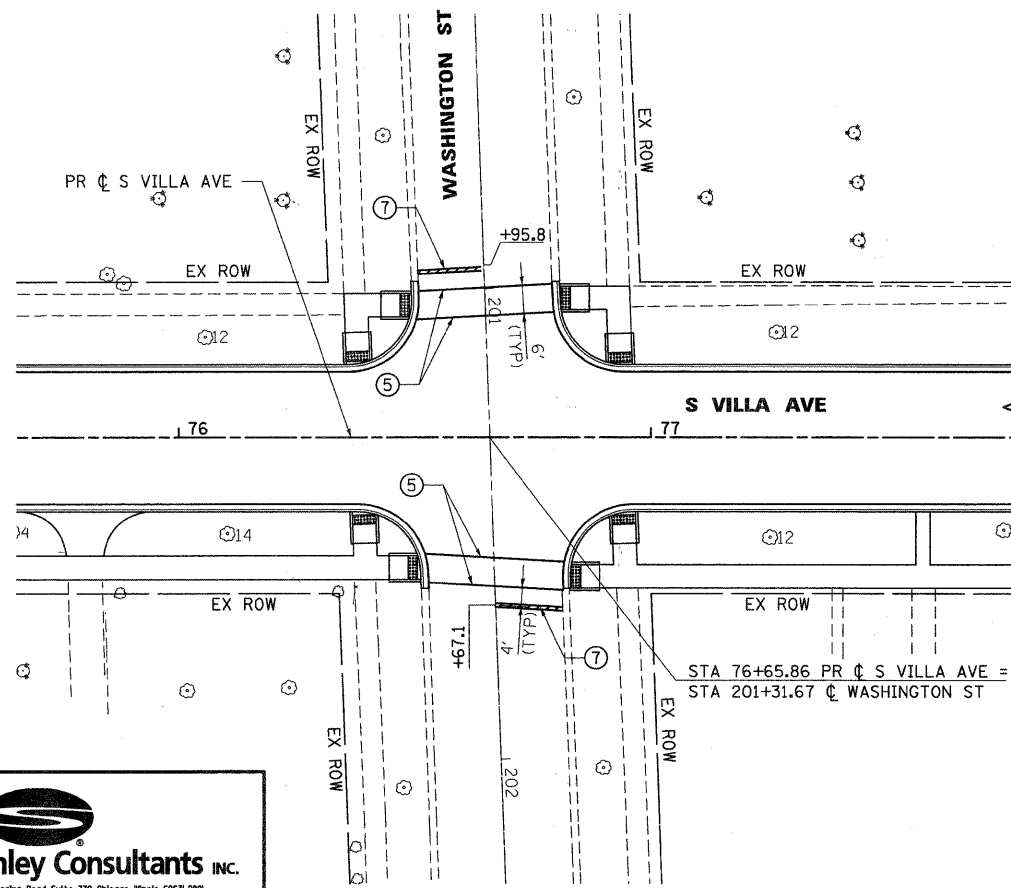
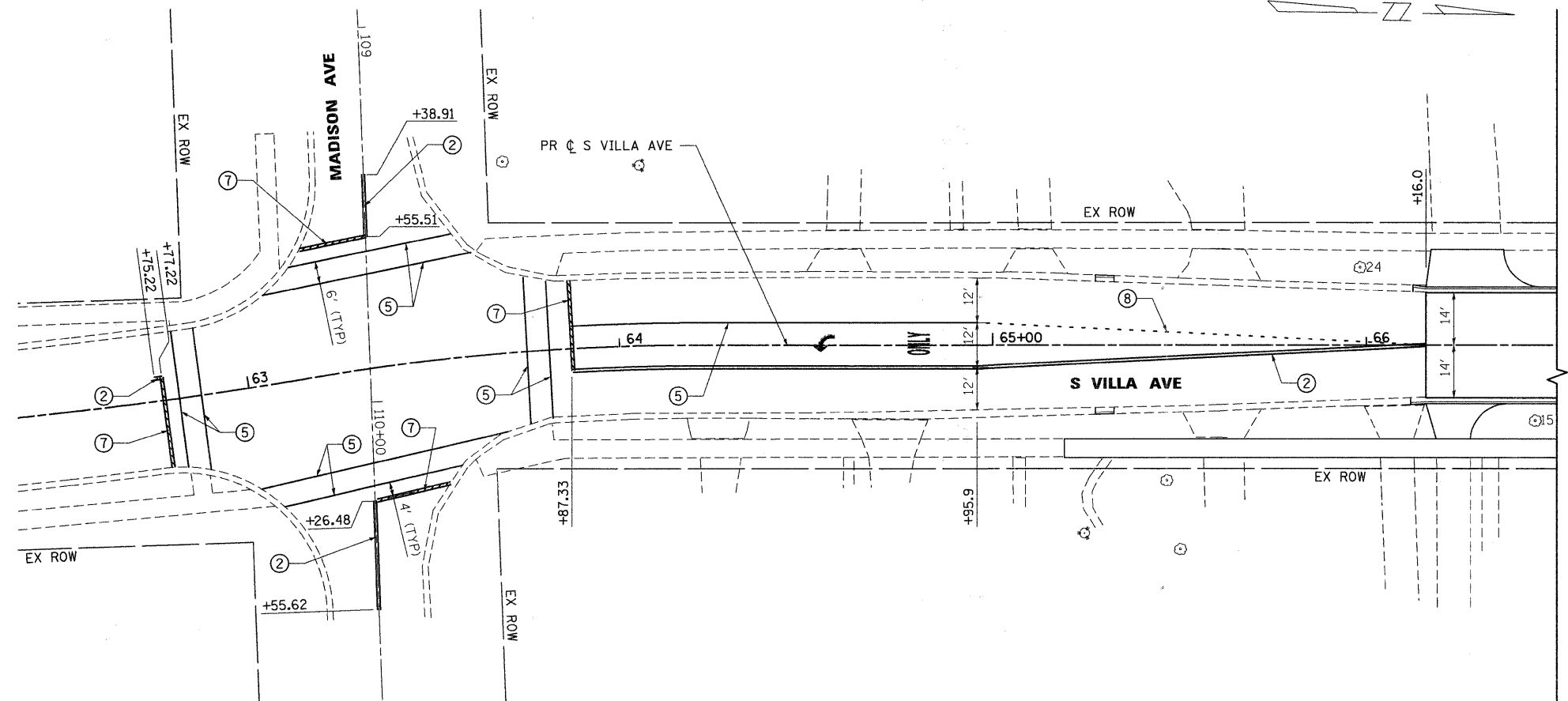


LEGEND:

- ① POLYUREA PAVEMENT MARKING TYPE I - LETTERS AND SYMBOLS
- ② POLYUREA PAVEMENT MARKING TYPE I - LINE 4" (DOUBLE YELLOW @ 11" C-C)
- ③ POLYUREA PAVEMENT MARKING TYPE I - LINE 4" (WHITE)
- ④ POLYUREA PAVEMENT MARKING TYPE I - LINE 4" (WHITE, 10' DASH, 30' SKIP)
- ⑤ POLYUREA PAVEMENT MARKING TYPE I - LINE 6" (WHITE)
- ⑥ POLYUREA PAVEMENT MARKING TYPE I - LINE 12" (YELLOW)
- ⑦ POLYUREA PAVEMENT MARKING TYPE I - LINE 24" (WHITE)
- ⑧ POLYUREA PAVEMENT MARKING TYPE I - LINE 6" (WHITE, 2' DASH, 6' SKIP)
- ⑨ POLYUREA PAVEMENT MARKING TYPE I - LINE 12" (WHITE)



FILE NAME = 057_650pm01.dgn	USER NAME = #USER#	DESIGNED - J.G.	REVISED -
PLOT SCALE = 1:20	CHECKED -	DRAWN - E.D.	REVISED -
PLOT DATE = 6/15/2010	DATE - 9/23/2009		REVISED -

VILLAGE OF VILLA PARK, ILLINOIS

PAVEMENT MARKING PLAN

F.A. U. RTE. 2652	SECTION 00-00070-00-PV	COUNTY DuPAGE	TOTAL SHEETS 160	SHEET NO. 57
FED. ROAD DIST. NO. [ILLINOIS] FED. AID PROJECT			CONTRACT NO. 63379	

