

LEGEND

- INSTALL LIGHT POLE, ALUMINUM, 47.5' M.H., 12' MAST ARM AND 400W HPS LUMINAIRE WITH LIGHT POLE FOUNDATION METAL, 15" BOLT CIRCLE, 10" X 8' UNLESS NOTED OTHERWISE
- INSTALL LIGHT POLE, ALUMINUM, 30' M.H., 12' MAST ARM AND 150W HPS LUMINAIRE WITH LIGHT POLE FOUNDATION METAL, 11.5" BOLT CIRCLE, 8-5/8" X 6' UNLESS NOTED OTHERWISE
- INSTALL LIGHT POLE, ALUMINUM, 30' M.H., 8' MAST ARM AND 150W HPS LUMINAIRE WITH LIGHT POLE FOUNDATION METAL, 11.5" BOLT CIRCLE, 8-5/8" X 6' UNLESS NOTED OTHERWISE
- INSTALL LIGHT POLE, ALUMINUM, 30 FT. M.H., TENON MOUNT - TWIN AND 150W HPS LUMINAIRE WITH LIGHT POLE FOUNDATION METAL, 11.5" BOLT CIRCLE, 8-5/8" X 6' UNLESS NOTED OTHERWISE
- PROPOSED LIGHTING CONTROLLER, 240/480V, 100A
- 5-1/C NO. 2 AND 1/C NO. 4 GROUND, 600V (EPR-TYPE RHW) IN CONDUIT INSTALLED, 1 1/2" DIA., NON-METALLIC
- GALVANIZED STEEL CONDUIT, PUSHED, 3" DIAMETER, LENGTH AS NOTED

- EXISTING MAST ARM AND LUMINAIRE (TO BE REMOVED BY OTHERS)
- REMOVAL OF EXISTING LIGHTING UNIT, NO SALVAGE. REMOVE LIGHT POLE FOUNDATION, PARTIAL
- REMOVAL OF EXISTING LIGHTING UNIT, SALVAGE. REMOVE LIGHT POLE FOUNDATION, PARTIAL
- PRIVATE LIGHTING UNIT TO REMAIN
- EXISTING LIGHTING UNIT TO REMAIN

- HANDHOLE

PROPOSED UNIT DUCT SHOWN IN SIDEWALK FOR CLARIFICATION ONLY, DUCT SHALL BE INSTALLED IN PARKWAY

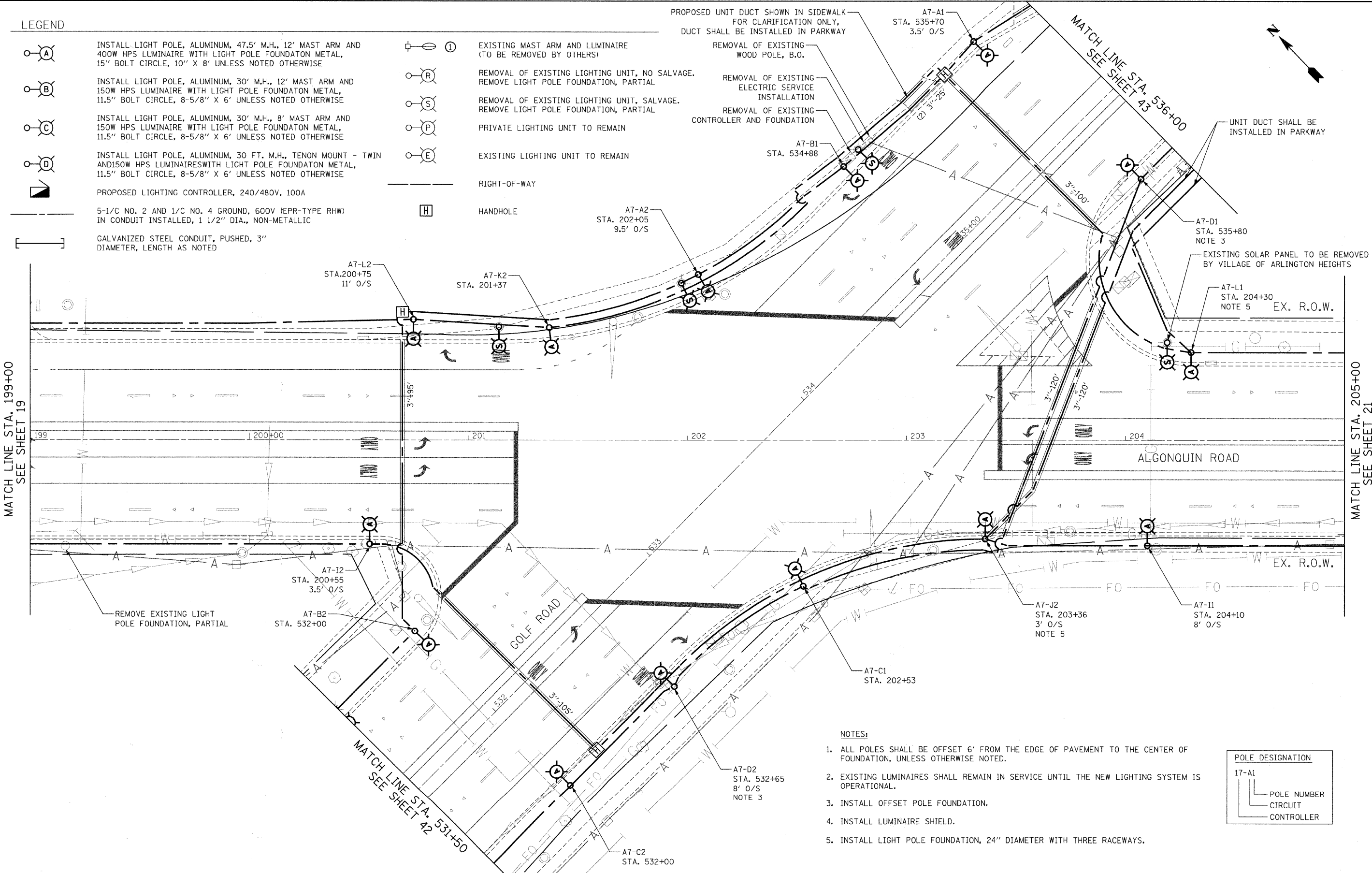
REMOVAL OF EXISTING WOOD POLE, B.O.

REMOVAL OF EXISTING ELECTRIC SERVICE INSTALLATION

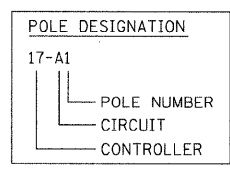
REMOVAL OF EXISTING CONTROLLER AND FOUNDATION

MATCH LINE STA. 199+00 SEE SHEET 19

MATCH LINE STA. 205+00 SEE SHEET 21



- NOTES:
- ALL POLES SHALL BE OFFSET 6' FROM THE EDGE OF PAVEMENT TO THE CENTER OF FOUNDATION, UNLESS OTHERWISE NOTED.
 - EXISTING LUMINAIRES SHALL REMAIN IN SERVICE UNTIL THE NEW LIGHTING SYSTEM IS OPERATIONAL.
 - INSTALL OFFSET POLE FOUNDATION.
 - INSTALL LUMINAIRE SHIELD.
 - INSTALL LIGHT POLE FOUNDATION, 24" DIAMETER WITH THREE RACEWAYS.



FILE NAME = nt:\p\proj\3379\design\proposed\lan\3379-PropL.dgn

Ciorba Group, Inc.
 CONSULTING ENGINEERS
 5507 North Cumberland Avenue, Suite 402
 Chicago, Illinois 60656
 Tel. 773.775.4009 Fax 773.775.4014

| | | |
|-----------------------------|------------------|-----------|
| USER NAME = jvondra | DESIGNED - RJR | REVISED - |
| PLOT SCALE = 20,0000' / IN. | DRAWN - RJR | REVISED - |
| PLOT DATE = 7/12/2010 | CHECKED - JMV | REVISED - |
| | DATE - 6/16/2010 | REVISED - |

**STATE OF ILLINOIS
 DEPARTMENT OF TRANSPORTATION**

**ALGONQUIN ROAD LIGHTING IMPROVEMENTS
 PROPOSED LIGHTING PLAN**

SCALE: 1"=20' SHEET NO. 20 OF 64 SHEETS STA. 199+00 TO STA. 205+00

| | | | | |
|---|------------------------|-------------|-----------------|--------------|
| F.A.P. RTE. 339 | SECTION 09-00100-00-LT | COUNTY COOK | TOTAL SHEETS 64 | SHEET NO. 20 |
| CONTRACT NO. 63426 | | | | |
| FED. ROAD DIST. NO. 1 ILLINOIS FED. AID PROJECT | | | | |