



## GENERAL CONSTRUCTION NOTES PAVING AND STORM SEWERS

### SPECIFICATIONS

THE LATEST EDITIONS OF THE "STANDARD SPECIFICATIONS FOR ROAD AND BRIDGE CONSTRUCTION", THE "SUPPLEMENTAL SPECIFICATIONS AND RECURRING SPECIAL PROVISIONS", PREPARED BY THE ILLINOIS DEPARTMENT OF TRANSPORTATION AND THE "MANUAL OF UNIFORM TRAFFIC CONTROL DEVICES" SHALL GOVERN ALL WORK ASSOCIATED WITH THIS PROJECT. THE "STANDARD SPECIFICATIONS FOR WATER AND SEWER MAIN CONSTRUCTION IN ILLINOIS" MAY GOVERN OTHER WORK ON THIS PROJECT AS INDICATED BY REFERENCE.

### CARE IN EXCAVATION

CARE SHALL BE EXERCISED BY THE CONTRACTOR IN CARRYING OUT EARTH AND/OR TRENCHING OPERATIONS SO THAT LOCAL UTILITY SERVICES, WATER VALVES, MANHOLES, CATCH BASINS, INLETS, BUFFALO BOXES, AND OTHER STRUCTURES ARE NOT DAMAGED OR REMOVED. ANY DAMAGE DONE BY THE CONTRACTOR, WHETHER THE STRUCTURE OR SERVICE IS VISIBLE AT THE GROUND SURFACE OR NOT, SHALL BE REPAIRED OR REPLACED BY THE CONTRACTOR IN ACCORDANCE WITH ARTICLES 105.07 AND 107.20.

### NOTIFICATION OF PUBLIC UTILITIES

PRIOR TO STARTING CONSTRUCTION, THE CONTRACTOR SHALL NOTIFY THE OFFICIALS OF THE PUBLIC WORKS DEPARTMENT OF THE LOCAL MUNICIPALITY, J.U.L.I.E. AT 1-800-892-0123 OR 811, AND OTHER PUBLIC AND PRIVATE UTILITIES SO THAT ARRANGEMENTS CAN BE MADE TO LOCATE THEIR VARIOUS FACILITIES WITHIN THE LIMITS OF CONSTRUCTION UNDER THIS CONTRACT, AS WELL AS TO PROVIDE ADEQUATE PROTECTION AND INSPECTION THEREOF. IT SHALL BE THIS CONTRACTOR'S RESPONSIBILITY TO DETERMINE THE ACTUAL LOCATION OF ALL SUCH FACILITIES IN THE FIELD.

### TRAFFIC CONTROL DEVICES

BARRICADES AND WARNING SIGNS SHALL BE PROVIDED IN ACCORDANCE WITH ARTICLE 107.14 OF THE "STANDARD SPECIFICATIONS FOR ROAD AND BRIDGE CONSTRUCTION".

### PROTECTION OF SIGNS AND PROPERTY

ALL TRAFFIC SIGNS, STREET SIGNS, ETC., THAT INTERFERE WITH THE CONSTRUCTION OPERATIONS SHALL BE REMOVED AND PLACED AT NEW LOCATIONS AS DESIGNATED BY THE ENGINEER. THIS WORK SHALL BE CONSIDERED INCLUDED IN THE COST OF THE CONTRACT, AND NO ADDITIONAL COMPENSATION WILL BE ALLOWED. IN ADDITION, ALL MAIL BOXES THAT INTERFERE WITH CONSTRUCTION SHALL BE SIMILARLY RELOCATED AT NO ADDITIONAL COST IN ACCORDANCE WITH ARTICLES 107.20 AND 107.21 OF THE "STANDARD SPECIFICATIONS FOR ROAD AND BRIDGE CONSTRUCTION".

### SUPERINTENDENCE

SPECIAL ATTENTION IS DRAWN TO ARTICLE 105.06 OF THE "STANDARD SPECIFICATIONS FOR ROAD AND BRIDGE CONSTRUCTION" WHICH REQUIRES THE CONTRACTOR TO HAVE A COMPETENT SUPERINTENDENT ON THE PROJECT SITE AT ALL TIMES, IRRESPECTIVE OF THE AMOUNT OF WORK. THE SUPERINTENDENT SHALL BE CAPABLE OF READING AND UNDERSTANDING THE PLANS AND SPECIFICATIONS, SHALL HAVE FULL AUTHORITY TO EXECUTE ORDERS TO EXPEDITE THE PROJECT AND SHALL BE RESPONSIBLE FOR SCHEDULING AND HAVING CONTROL OF ALL THE WORK AS THE AGENT OF THE GENERAL CONTRACTOR. FAILURE TO COMPLY WITH THIS PROVISION WILL RESULT IN A SUSPENSION OF WORK AS PROVIDED IN ARTICLE 108.07.

### SAWING EXISTING IMPROVEMENTS

ALL PERMANENT TYPE PAVEMENTS OR OTHER PERMANENT IMPROVEMENTS WHICH ABUT THE PROPOSED IMPROVEMENT AND MUST BE REMOVED, SHALL BE SAWED AS DIRECTED PRIOR TO REMOVAL. ALL ITEMS SO REMOVED SHALL BE REPLACED WITH SIMILAR CONSTRUCTION MATERIALS TO THEIR ORIGINAL CONDITION OR BETTER. PAYMENT FOR SAWING SHALL BE INCLUDED IN THE COST FOR THE REMOVAL OF EACH ITEM, AND REPLACEMENT WILL BE PAID FOR UNDER THE RESPECTIVE ITEMS IN THE CONTRACT UNLESS OTHERWISE INDICATED. SAWCUTTING FOR PATCHES WILL BE INCLUDED IN THE COST OF THE PATCHING ITEM.

### CONSTRUCTION LAYOUT STAKES

THE CONTRACTOR SHALL PROVIDE THE ENGINEER WITH WOODEN STAKES OR OTHER LAYOUT MATERIALS FOR LAYOUT OF THE LINES AND GRADES OF THE PROJECT. FAILURE TO PROVIDE STAKES IN A TIMELY MANNER WILL RESULT IN A DELAY IN STAKEOUT WHICH WILL BE APPLICABLE AGAINST THE TIME LIMIT FOR COMPLETION SHOWN IN THE PROJECT SPECIFICATIONS. LINE AND GRADE WILL BE ESTABLISHED BY THE ENGINEER AT REGULAR INTERVALS ON PERMANENTLY PAVED SURFACES, SIDEWALKS OR STAKES AT THE ENGINEER'S OPTION, ALL WITHIN THE PUBLIC RIGHT-OF-WAY AND SHALL BE TRANSFERRED BY THE CONTRACTOR TO THE ACTUAL LINE OF CONSTRUCTION.

### PROJECT SAFETY

BARRICADES: THE CONTRACTOR SHALL PROVIDE AND INSTALL TWO (2) WEIGHTED SAND BAGS ON EACH TYPE I OR TYPE II BARRICADE USED ONE (1) WEIGHTED SAND BAG ACROSS EACH BOTTOM RAIL.

WHEN MILLED PAVEMENT IS OPEN TO TRAFFIC THE MAXIMUM GRADE DIFFERENTIAL BETWEEN PASSES OF THE MILLING MACHINE SHALL NOT EXCEED 1-1/2 INCHES WHERE THE SPEED LIMIT IS 45 MPH OR LESS AND 1 INCH WHERE THE SPEED LIMIT IS GREATER THAN 45 MPH. WITH WRITTEN APPROVAL FROM THE ENGINEER, A MAXIMUM GRADE DIFFERENTIAL OF 3 INCHES MAY BE ALLOWED IF THE EDGE OF THE MILLING IS SLOPED A MINIMUM 1:3 (V:H).

BUTT JOINTS WILL BE INSTALLED AT THE ENDS OF ALL RESURFACING (WHERE RESURFACING MEETS EXISTING PAVEMENT), IN ACCORDANCE WITH THE "BUTT JOINT AND HOT-MIX ASPHALT TAPER DETAILS" SHEET INCLUDED IN THE PLANS, UNLESS OTHERWISE SPECIFIED.

THE CONTRACTOR SHALL COMPLY WITH AND OBSERVE THE RULES AND REGULATIONS OF O.S.H.A. AND APPROPRIATE AUTHORITIES REGARDING SAFETY PROVISIONS. THE CONTRACTOR, ENGINEER, AND OWNER SHALL EACH BE RESPONSIBLE FOR THEIR OWN RESPECTIVE AGENTS AND EMPLOYEES.

THE ENGINEER AND OWNER ARE NOT RESPONSIBLE FOR THE CONSTRUCTION MEANS, METHODS, TECHNIQUES, SEQUENCES OR PROCEDURES, TIME OF PERFORMANCE, PROGRAMS, OR FOR ANY SAFETY PRECAUTIONS USED BY THE CONTRACTOR. THE CONTRACTOR IS SOLELY RESPONSIBLE FOR EXECUTION OF HIS WORK IN ACCORDANCE WITH THE DOCUMENTS AND SPECIFICATIONS.

## SPECIAL PROJECT NOTES

ALL PATCHING AND COMBINATION CURB AND GUTTER REPLACEMENT WILL BE MARKED OUT AND CONSTRUCTED AFTER MILLING. A PROOF ROLL WILL BE REQUIRED PRIOR TO PATCHING

## SUMMARY OF QUANTITIES

Specialty Item	Special Provision	Item No	Description	Unit	Quantity	Construction Code 1000
		21101615	TOPSOIL FURNISH AND PLACE, 4"	SQ YD	50	
		25000400	NITROGEN FERTILIZER NUTRIENT	POUND	5	
		25000500	PHOSPHORUS FERTILIZER NUTRIENT	POUND	5	
		25000600	POTASSIUM FERTILIZER NUTRIENT	POUND	5	
		25200100	SODDING	SQ YD	50	
		40600100	BITUMINOUS MATERIALS (PRIME COAT)	GALLON	472	
		40600300	AGGREGATE (PRIME COAT)	TON	5	
		40600625	LEVELING BINDER (MACHINE METHOD), N50	TON	262	
		40600982	HOT-MIX ASPHALT SURFACE REMOVAL - BUTT JOINT	SQ YD	21	
		40603310	HOT-MIX ASPHALT SURFACE COURSE, MIX "C", N50	TON	470	
		42300300	PORTLAND CEMENT CONCRETE DRIVEWAY PAVEMENT, 7 INCH	SQ YD	25	
		42400200	PORTLAND CEMENT CONCRETE SIDEWALK 5 INCH	SQ FT	330	
		42400800	DETECTABLE WARNINGS	SQ FT	48	
		44000158	HOT-MIX ASPHALT SURFACE REMOVAL, 2 1/4"	SQ YD	4700	
		44000200	DRIVEWAY PAVEMENT REMOVAL	SQ YD	60	
		44000600	SIDEWALK REMOVAL	SQ FT	330	
		Z0004562	COMBINATION CONCRETE CURB AND GUTTER REMOVAL AND REPLACEMENT	FOOT	500	
		44201741	CLASS D PATCHES, TYPE II, 8 INCH	SQ YD	50	
		44201745	CLASS D PATCHES, TYPE III, 8 INCH	SQ YD	100	
		44201747	CLASS D PATCHES, TYPE IV, 8 INCH	SQ YD	790	
		Z0001802	AREA REFLECTIVE CRACK CONTROL TREATMENT, SYSTEM A	SQ YD	4700	
		60250200	CATCH BASINS TO BE ADJUSTED	EACH	6	
		60255500	MANHOLES TO BE ADJUSTED	EACH	2	
	SP	60266610	VALVE BOXES TO BE ADJUSTED (SPECIAL)	EACH	8	
	SP	60300310	FRAMES AND LIDS TO BE ADJUSTED (SPECIAL)	EACH	8	
		67100100	MOBILIZATION	L SUM	1	
		70102620	TRAFFIC CONTROL AND PROTECTION, STANDARD 701501	L SUM	1	
		70102640	TRAFFIC CONTROL AND PROTECTION, STANDARD 701801	L SUM	1	
		70106800	CHANGEABLE MESSAGE SIGN	CAL MO	3	
*		78000650	THERMOPLASTIC PAVEMENT MARKING - LINE 24"	FOOT	30	

FILE NAME VILLAGE OF HODGKINS  
CATHERINE ANN DRIVE  
EAST AVENUE TO LENZI AVENUE  
LENZI AVENUE  
#09387 CATHERINE ANN DRIVE TO JOLIET ROAD

USER NAME =  
PLOT SCALE =  
PLOT DATE =

DESIGNED -- THK  
DRAWN -- JFP  
CHECKED -- JLC  
DATE -- 3/10

REVISED -- JLC 4-26-10  
REVISED -- JLC 6-16-10  
REVISED --  
REVISED --

**STATE OF ILLINOIS  
DEPARTMENT OF TRANSPORTATION**

**GENERAL NOTES & SUMMARY OF QUANTITIES**

SCALE: NONE SHEET NO. OF SHEETS STA. TO STA.

**Frank Novotny & Associates, Inc.**  
Civil Engineer  
Municipal Consultants  
825 Midway Drive • Willmetts, IL • 60091 • Telephone (630) 887-8640 • Fax (630) 887-0153  
ILLINOIS PROFESSIONAL DESIGN PERM NO. 184-000028

F.A. R.T.E.	SECTION	COUNTY	TOTAL SHEETS	SHEET NO.
--	10-00018-00-RS	COOK	11	2
CONTRACT NO. 63482				
ILLINOIS FED. AID PROJECT HPP-3461(003)				

NOTE: CONTRACTOR SHALL MILL BEFORE PATCHING.

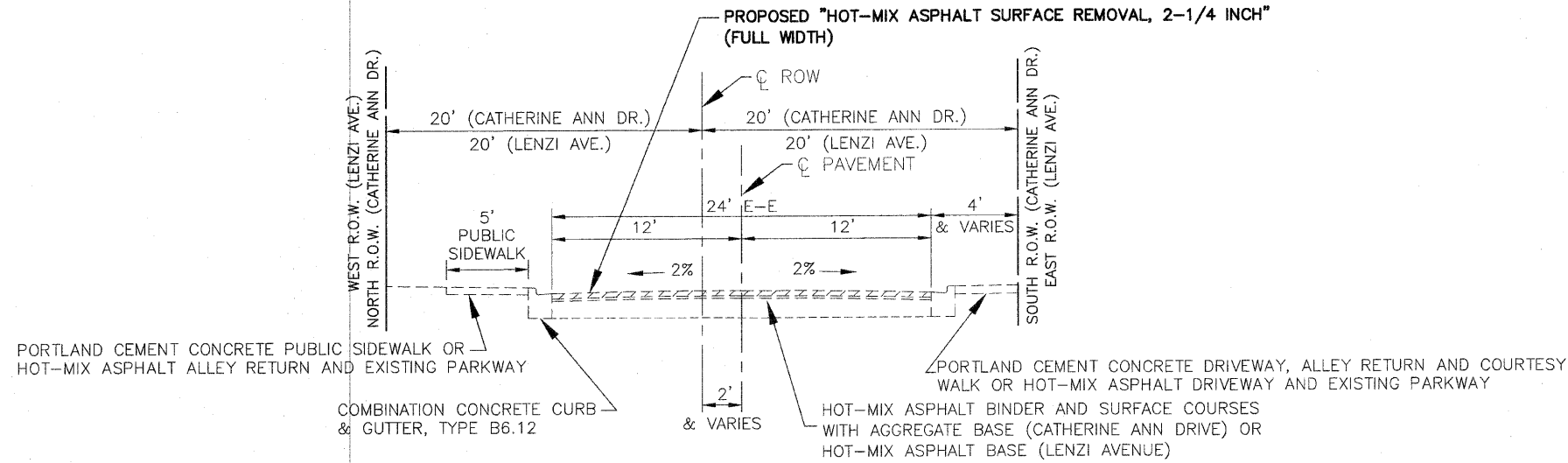
**HOT-MIX ASPHALT MIXTURE REQUIREMENTS**

MIXTURE TYPE	PERCENT AIR VOIDS
<b>ROADWAY</b>	
HOT-MIX ASPHALT SURFACE COURSE, MIX "C", N50, 1-3/4" (IL-9.5mm)	4% @ 50 GYR
LEVELING BINDER (MACHINE METHOD), N50, 3/4" (IL-9.5mm)	4% @ 50 GYR
<b>DRIVEWAYS</b>	
HOT-MIX ASPHALT DRIVEWAY REPLACEMENT, 3" (HOT-MIX ASPHALT SURFACE COURSE, MIX "C", N50) (IL-9.5mm)	4% @ 50 GYR
<b>PATCHING</b>	
CLASS D PATCHES, TYPE II-IV, 8", (HMA BINDER IL-19.0mm)	4% @ 50 GYR

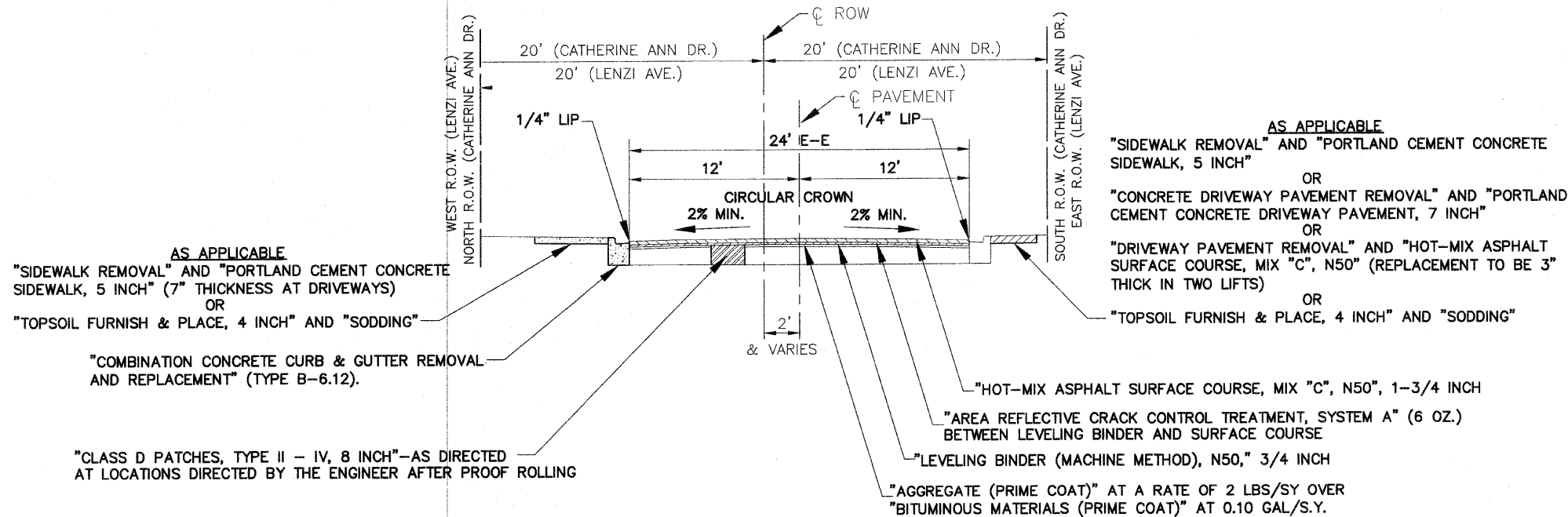
THE UNIT WEIGHT TO CALCULATE ALL HOT-MIX ASPHALT SURFACE MIXTURE QUANTITIES IS 112 LBS/SQ YD/IN.

"THE "AC TYPE" FOR POLYMERIZED HMA MIXES SHALL BE "SBS/SBR PG 70-22" AND FOR NON-POLYMERIZED HMA THE "AC TYPE" SHALL BE "PG 64-22" UNLESS MODIFIED BY DISTRICT ONE SPECIAL PROVISIONS"

"FOR "PERCENT OF RAP" SEE DISTRICT ONE SPECIAL PROVISIONS"



LENZI AVENUE - CATHERINE ANN DRIVE TO JOLIET ROAD - STA. 0+22 TO STA. 4+60  
CATHERINE ANN DRIVE - EAST AVENUE TO LENZI AVNUE - STA. 4+60 TO STA. 17+69



NOTE:  
 ALL "AREA REFLECTIVE CRACK CONTROL TREATMENT, SYSTEM A" SHALL HAVE A WEIGHT OF 6 OZ. PER SQUARE YARD.

LENZI AVENUE - CATHERINE ANN DRIVE TO JOLIET ROAD - STA. 0+22 TO STA. 4+60  
CATHERINE ANN DRIVE - EAST AVENUE TO LENZI AVNUE - STA. 4+60 TO STA. 17+69

**TYPICAL CROSS SECTIONS**

SCALE: 1"=5'

**IMPORTANT!**  
 FULL SIZE PLANS HAVE BEEN PREPARED USING STANDARD ENGINEERING SCALES. REDUCED SIZED PLANS WILL NOT CONFORM TO STANDARD SCALES INDICATED IN TITLE BLOCK.

FILE NAME VILLAGE OF HODGKINS  
 CATHERINE ANN DRIVE  
 EAST AVENUE TO LENZI AVENUE  
 LENZI AVENUE  
 CATHERINE ANN DRIVE TO JOLIET ROAD

USER NAME =  
 PLOT SCALE =  
 PLOT DATE =

DESIGNED - THK  
 DRAWN - JFP  
 CHECKED - JLC  
 DATE - 3/10

REVISED - JLC 4-26-10  
 REVISED - JLC 6-16-10  
 REVISED -  
 REVISED -

STATE OF ILLINOIS  
 DEPARTMENT OF TRANSPORTATION

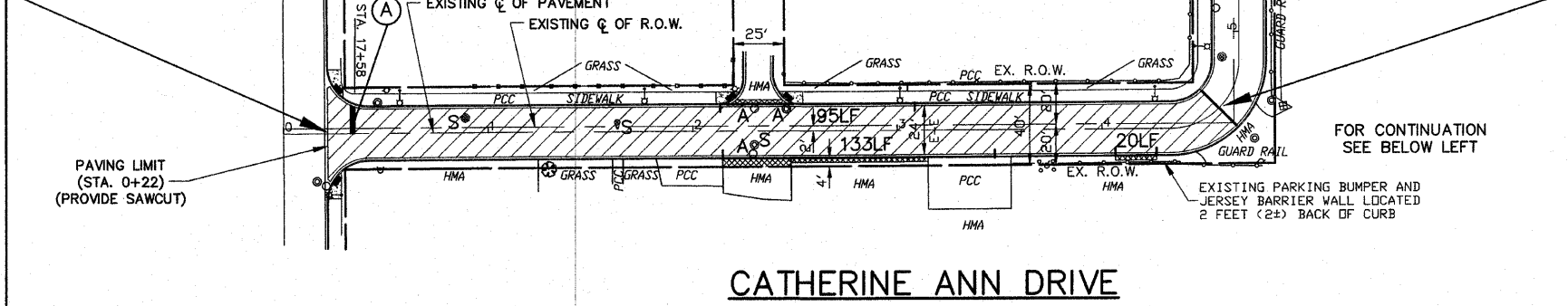
TYPICAL CROSS SECTIONS &  
 HOT-MIX ASPHALT MIXTURE REQUIREMENTS  
 SCALE: 1"=5' SHEET NO. OF SHEETS STA. TO STA.

**Frank Novotny & Associates, Inc.**  
 825 Midway Drive • Willowbrook, IL • 60157 • Telephone: (630) 887-8640 • Fax: (630) 887-0122  
 ILLINOIS PROFESSIONAL DESIGN FIRM NO. 184-009628

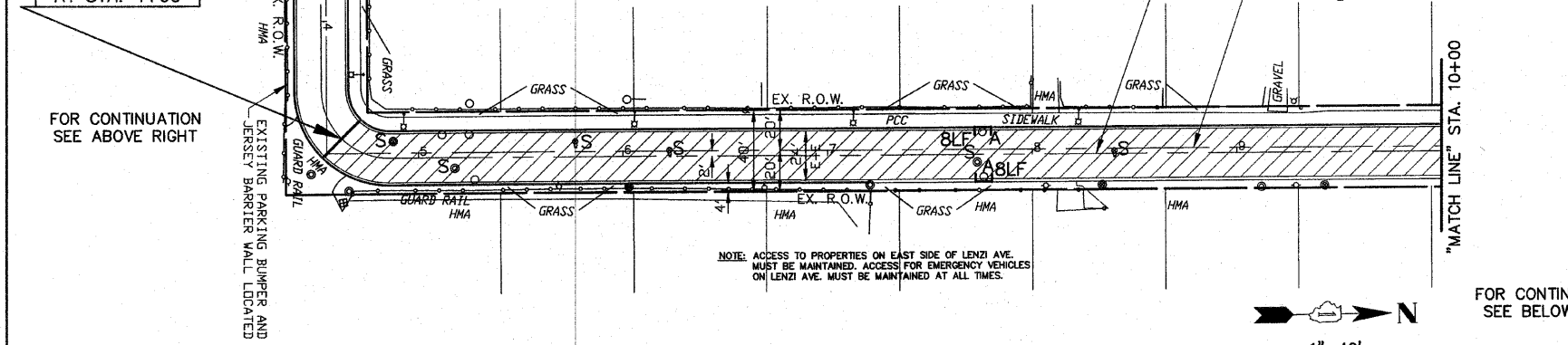
F.A. -	SECTION	COUNTY	TOTAL SHEETS	SHEET NO.
-	10-00018-00-RS	COOK	11	3
CONTRACT NO. 63482				
FED. ROAD DIST. NO.	ILLINOIS FED. AID PROJECT	HPP-3461(003)		

(CATHERINE ANN DRIVE) PROJECT BEGINS AT STA. 0+22

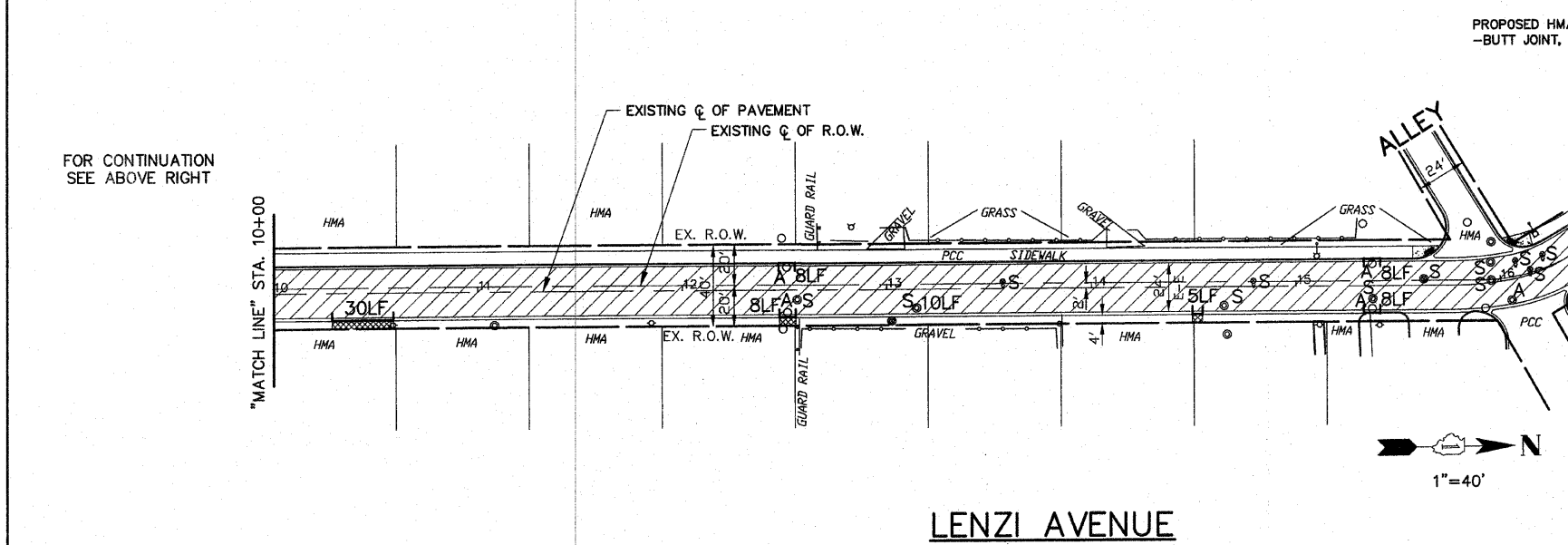
(CATHERINE ANN DRIVE) PROJECT ENDS AT STA. 4+60



(LENI AVENUE) CATHERINE ANN DRIVE PROJECT BEGINS AT STA. 4+60



(LENI AVENUE) PROJECT ENDS AT STA. 17+69



- LEGEND**
- DENOTES HOT-MIX ASPHALT SURFACE REMOVAL, 2-1/4" LEVELING BINDER (MACHINE METHOD), N50, 3/4" INCH AND HOT-MIX ASPHALT SURFACE COURSE, MIX C, N50, 1-3/4"
  - DENOTES PORTLAND CEMENT CONCRETE DRIVEWAY PAVEMENT REMOVAL AND REPLACEMENT, 7" INCH
  - DENOTES "HOT-MIX ASPHALT SURFACE COURSE, MIX "C", N50, 3" INCH (HOT-MIX ASPHALT DRIVEWAY PAVEMENT REMOVAL TO BE PAID FOR AS "DRIVEWAY PAVEMENT REMOVAL")
  - DENOTES SIDEWALK REMOVAL AND PORTLAND CEMENT CONCRETE SIDEWALK, 5" INCH
  - DENOTES DETECTABLE WARNING PER I.D.O.T. STANDARD 424001-05 FOR HANDICAP RAMPS
  - "A"** DENOTES EXISTING VALVE VAULTS, INLETS, CATCH BASINS AND MANHOLES TO BE CLEANED, GROUTED, AND ADJUSTED TO GRADE WITH NEW ADJUSTING RINGS. (ALL TOP BANDS OF FALLEN, COMMON OR CONCRETE BRICK TO BE REPLACED WITH PRECAST CONCRETE ADJUSTING RINGS)
  - "S"** DENOTES EXISTING FRAMES AND LIDS AND VALVE BOXES TO BE ADJUSTED (SPECIAL) (SEE SHEET 5 FOR DETAIL)
  - 8 FT DENOTES COMBINATION CONCRETE CURB & GUTTER REMOVAL AND REPLACEMENT PROVIDE DETECTABLE WARNINGS AND RAMPS AT ALL SIDEWALK

ALL SAW CUTS SHALL BE CONSIDERED INCLUDED IN THE COST OF THE ITEM BEING REMOVED.

**THERMOPLASTIC STRIPING CODE**

- (A) PROPOSED SOLID WHITE THERMOPLASTIC PAVEMENT MARKING - LINE 24" (STOP BAR)

FOR TYPICAL CROSS SECTION OF NEW PAVEMENT WORK SEE SHEET 3

**IMPORTANT!**  
 FULL SIZE PLANS HAVE BEEN PREPARED USING STANDARD ENGINEERING SCALES. REDUCED SIZED PLANS WILL NOT CONFORM TO STANDARD SCALES INDICATED IN TITLE BLOCK.

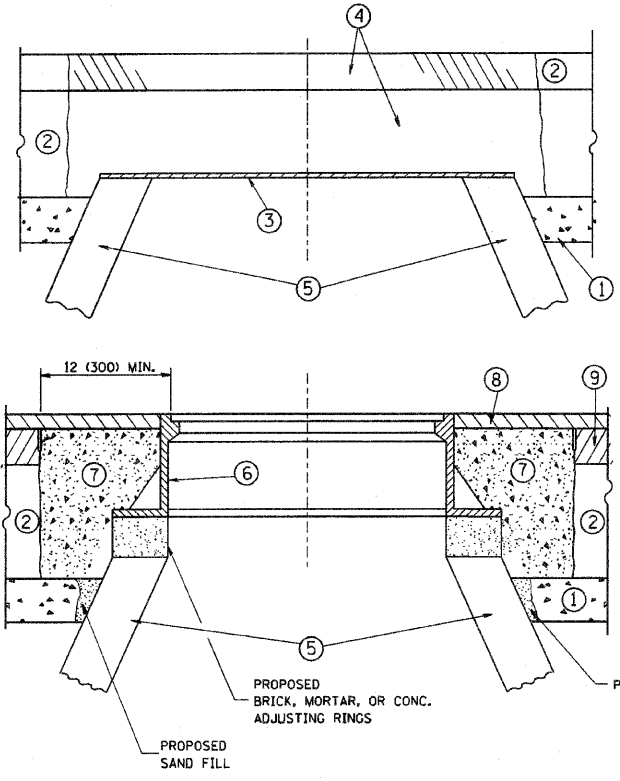
FILE NAME: VILLAGE OF HODGKINS  
 CATHERINE ANN DRIVE  
 EAST AVENUE TO LENZI AVENUE  
 LENZI AVENUE  
 CATHERINE ANN DRIVE TO JOLIET ROAD

USER NAME =	DESIGNED - THK	REVISED - JLC 4-26-10
PLOT SCALE =	DRAWN - JFP-JEP	REVISED - JLC 6-16-10
PLOT DATE =	CHECKED - THK	REVISED -
	DATE - 1-26-10	REVISED -

STATE OF ILLINOIS  
 DEPARTMENT OF TRANSPORTATION

PLAN: CATHERINE ANN DRIVE - EAST AVENUE TO LENZI AVENUE  
 LENZI AVENUE - CATHERINE ANN DRIVE TO JOLIET ROAD  
 SCALE: 1"=40' SHEET NO. OF SHEETS STA. TO STA.  
 (RESURFACING & PAVEMENT MARKING)

Frank Novotny & Associates, Inc. <small>285 Midway Drive • Wheeling, IL • 60091 • Telephone: (815) 897-9640 • Fax: (815) 897-0133      ILLINOIS PROFESSIONAL DESIGN PERM NO. 184-000828</small>				
F.A. R.T.E.	SECTION	COUNTY	TOTAL SHEETS	SHEET NO.
-	10-00018-00-RS	COOK	11	4
CONTRACT NO. 63482				
FED. ROAD DIST. NO.	ILLINOIS FED. AID PROJECT	HPP-3461(003)		



**CONSTRUCTION PROCEDURES**

**STAGE 1 (BEFORE PAVEMENT MILLING)**

- A) REMOVE A MINIMUM OF 12 (300) OF THE PAVEMENT FROM AROUND THE STRUCTURE.
- B) REMOVE THE EXISTING FRAME AND LID FROM THE STRUCTURE.
- C) COVER THE STRUCTURE OPENING WITH A 36 (900) DIAMETER METAL PLATE.
- D) BACKFILL WITH CRUSHED STONE AND A MINIMUM 1 1/2 (40) THICK HMA SURFACE MIX APPROVED BY THE ENGINEER.

**STAGE 2 (AFTER PAVEMENT MILLING)**

- A) REMOVE THE HMA SURFACE MIX AND CRUSHED STONE.
- B) INSTALL THE FRAME AND LID; ADJUST THE FRAME TO ITS FINAL SURFACE ELEVATION.
- C) THE SURROUNDING SPACE SHALL BE FILLED WITH CLASS SI CONCRETE, OR HMA SURFACE COURSE OR HMA BINDER COURSE TO THE ELEVATION OF THE SURFACE OF THE EXISTING BASE COURSE OR THE BINDER COURSE.

THE PROCEDURE EXPLAINED ABOVE SHALL CONFORM TO THE APPLICABLE PORTIONS OF SECTIONS 353, 406, 602, AND 603 OF THE STANDARD SPECIFICATIONS.

**LEGEND**

- ① SUB-BASE GRANULAR MATERIAL
- ② EXISTING PAVEMENT
- ③ 36 (900) DIAMETER METAL PLATE
- ④ PROPOSED CRUSHED STONE AND HMA SURFACE MIX
- ⑤ EXISTING STRUCTURE
- ⑥ FRAME AND LID (SEE NOTES)
- ⑦ CLASS SI CONCRETE, HMA SURFACE COURSE OR HMA BINDER COURSE
- ⑧ PROPOSED HMA SURFACE COURSE
- ⑨ PROPOSED HMA BINDER COURSE

**NOTES:**

EXISTING BROKEN FRAMES AND LIDS SHALL BE REMOVED AND DISPOSED OF BY THE CONTRACTOR AND SHALL BE REPLACED AS DIRECTED BY THE ENGINEER. REPLACEMENT FRAMES AND LIDS WILL BE PAID FOR IN ACCORDANCE WITH ARTICLE 109.04 OF THE STANDARD SPECIFICATIONS UNLESS A SEPARATE PAY ITEM HAS BEEN PROVIDED.

IF THE EXISTING LIDS ARE OPEN, THE FRAME WILL BE ADJUSTED TO THE ELEVATION OF THE MILLED PAVEMENT SURFACE PRIOR TO THE MILLING OPERATION. THE FRAME WILL NOT BE REMOVED AND COVERED BY THE METAL PLATE.

CITY OF CHICAGO CASTINGS ARE THE PROPERTY OF THE CITY AND THE CONTRACTOR SHALL NOTIFY THE CITY FOR REMOVAL AND DISPOSITION OF THE CASTINGS.

THE METAL PLATE USED TO COVER THE STRUCTURE SHALL REMAIN THE PROPERTY OF THE CONTRACTOR.

WHEN STRUCTURES ARE TO BE ADJUSTED OR RECONSTRUCTED, THE LOWERING AND RAISING OF THE FRAMES AND LIDS WILL NOT BE PAID FOR SEPARATELY BUT WILL BE INCLUDED IN THE COST OF THE CORRESPONDING PAY ITEM.

**LOCATION OF STRUCTURES:**

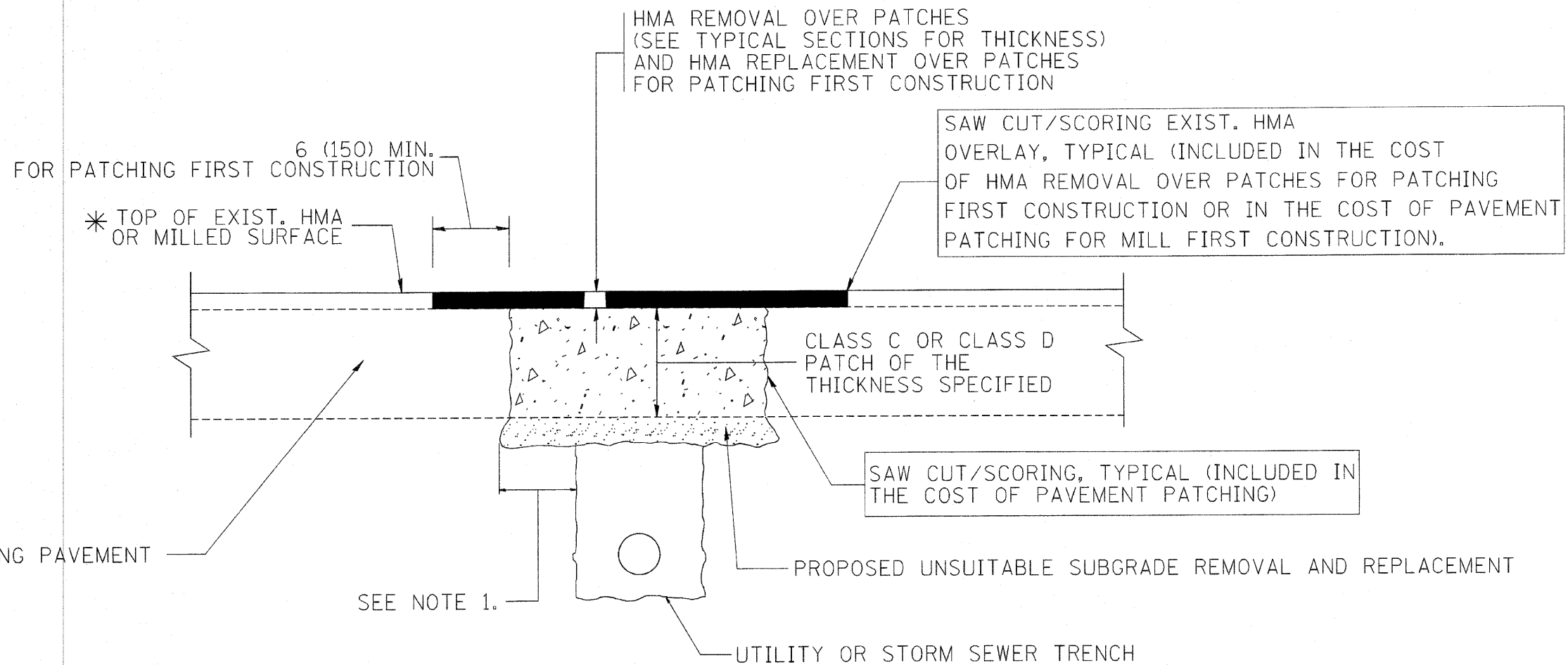
THE CONTRACTOR WILL BE REQUIRED TO KEEP A RECORD OF THE LOCATIONS OF THE BURIED STRUCTURES ACCORDING TO THE STATION AND DISTANCE LEFT OR RIGHT OF THE CENTERLINE OF PAVEMENT. UPON COMPLETION OF THE WORK, THE CONTRACTOR WILL DELIVER THE RECORD TO THE ENGINEER.

**BASIS OF PAYMENT:** THIS WORK WILL BE PAID FOR AT THE CONTRACT UNIT PRICE PER EACH FOR "FRAMES AND LIDS TO BE ADJUSTED, SPECIAL"  
NEW FRAMES AND LIDS, WHEN SPECIFIED, WILL BE PAID FOR SEPARATELY.

**DETAILS FOR FRAMES AND LIDS ADJUSTMENT WITH MILLING**

ALL DIMENSIONS ARE IN INCHES (MILLIMETERS) UNLESS OTHERWISE SHOWN

FILE NAME = W:\diststd\22\34\bd08.dgn	USER NAME = gegljanobt	DESIGNED - R. SHAH	REVISED - R. SHAH 03-10-95	<b>STATE OF ILLINOIS DEPARTMENT OF TRANSPORTATION</b>	<b>DETAILS FOR FRAMES AND LIDS ADJUSTMENT WITH MILLING</b>		F.A. RTE.	SECTION	COUNTY	TOTAL SHEETS	SHEET NO.
	PLOT SCALE = 50.0000' / IN.	DRAWN -	REVISED - A. ABBAS 03-21-97		10-00018-00-RS	COOK	11	5			
	PLOT DATE = 1/4/2008	CHECKED -	REVISED - R. WIEDEMAN 05-14-04		BD600-03 (BD-8)	CONTRACT NO. 63482					
	DATE - 10-25-94	REVISED - R. BORO 01-01-07		SCALE: NONE	SHEET NO. 1 OF 1 SHEETS	STA. TO STA.	FED. ROAD DIST. NO. 1 ILLINOIS FED. AID PROJECT HPP-3461(003)				



\* SEE TYPICAL SECTIONS FOR THICKNESS AND MATERIALS

**NOTES:**

1. THE WIDTH OF THE FULL DEPTH PATCH OVER A TRENCH SHALL BE 12 (300) WIDER ON EACH SIDE OF THE TRENCH.
2. FOR METHOD OF MEASUREMENT AND BASIS OF PAYMENT, SEE RECURRING SPECIAL PROVISION "PATCHING WITH HOT-MIX ASPHALT OVERLAY REMOVAL".

SEQUENCE OF CONSTRUCTION (PATCHING FIRST)

1. REMOVE THE EXISTING HMA MATERIAL OVER THE AREA TO BE PATCHED.
2. REMOVE AND REPLACE WITH CLASS C OR D PATCH.
3. REPLACE HMA MATERIAL OVER THE AREA TO BE PATCHED.

SEQUENCE OF CONSTRUCTION (MILLING FIRST)

1. MILL HMA FIRST IF THERE IS AT LEAST 4 1/2 INCHES OR MORE OF HMA MATERIAL ON TOP OF THE EXISTING PAVEMENT OR IF THE PAVEMENT IS FULL DEPTH HMA. A MINIMUM OF 2 INCHES OF HMA MATERIAL SHALL BE IN PLACE AFTER MILLING.
2. REMOVE AND REPLACE WITH FULL DEPTH CLASS D PATCHES TO TOP OF MILLED SURFACE.

ALL DIMENSIONS ARE IN INCHES (MILLIMETERS) UNLESS OTHERWISE SHOWN.

FILE NAME = c:\projects\diststd22x34\bd22.dgn	USER NAME = bouerd1	DESIGNED - R. SHAH	REVISED - A. ABBAS 04-27-98	<b>STATE OF ILLINOIS DEPARTMENT OF TRANSPORTATION</b>	<b>PAVEMENT PATCHING FOR HMA SURFACED PAVEMENT</b>			F.A. RTE.	SECTION	COUNTY	TOTAL SHEETS	SHEET NO.
		DRAWN -	REVISED - R. BORO 01-01-07		SCALE: NONE	SHEET NO. 1 OF 1 SHEETS	STA.	TO STA.	10-00018-00-RS	COOK	11	6
		CHECKED -	REVISED - R. BORO 09-04-07						<b>BD400-04 (BD-22)</b>	CONTRACT NO. 63482		
		DATE - 10-25-94	REVISED - K. ENG 10-27-08						FED. ROAD DIST. NO. 1	ILLINOIS	FED. AID PROJECT	HPP-3461(003)

VARIABLE - TO MEET EXISTING DIMENSIONS AND FIELD CONDITIONS (SEE NOTE ②)

PROP. CONC. CURB OR CURB AND GUTTER REPLACEMENT IN ACCORDANCE WITH STATE STANDARD 606001. (SEE NOTE ②)

SAW CUT FULL DEPTH - INCLUDED IN THE COST OF SIDEWALK, DRIVEWAY OR MEDIAN SURFACE REMOVAL PAY ITEM.

SEE STATE STANDARD 606001

18" (450) MAX.

EXISTING OR PROPOSED HMA SURFACE (IF APPLICABLE)

1/4" (5) \*\*

EXISTING SIDEWALK, DRIVEWAY, MEDIAN SURFACE, SOD OR GROUND.

PROPOSED SIDEWALK, DRIVEWAY PAVEMENT, MEDIAN SURFACE OR SODDING SALT TOLERANT WITH TOP SOIL, 4" (100) SOD RESTORATION (SEE NOTE ①).

EXISTING CONCRETE PAVEMENT, CONCRETE BASE COURSE OR FLEXIBLE PAVEMENT

3" (75) MIN.

SUITABLE BACKFILL MATERIAL (INCLUDED IN THE COST OF CURB OR CURB AND GUTTER REMOVAL AND REPLACEMENT)

PROPOSED 3/4" (20) PREFORMED EXPANSION JOINT AT CONCRETE SIDEWALKS, DRIVEWAYS, AND MEDIANS. (INCLUDED IN THE COST OF CURB OR CURB AND GUTTER REMOVAL AND REPLACEMENT.)

\* 3" (75) MINIMUM FROM TOP AND BOTTOM OF THE CONCRETE PAVEMENT OR BASE COURSE.

\*\* IF THE FINAL SURFACE OF THE PAVEMENT IS CONCRETE, THE GUTTER IS TO BE FLUSH WITH THE PAVEMENT.

NOTE: ① SIDEWALK, DRIVEWAY PAVEMENT OR MEDIAN SURFACE SHALL BE SIMILAR TO THE MATERIAL BEING REMOVED AND WILL BE PAID FOR SEPARATELY. SODDING, SALT TOLERANT AND TOP SOIL, FURNISH AND PLACE 4" WILL BE PAID FOR SEPARATELY.

② FERTILIZER FOR THE PLACEMENT OF THE SOD IS NOT REQUIRED

③ CURB OR CURB AND GUTTER REPLACEMENT SHALL MATCH THE SHAPE OF THE EXISTING CURB OR CURB AND GUTTER UNLESS OTHERWISE SPECIFIED.

④ FOR CURB OR CURB AND GUTTER REMOVAL AND REPLACEMENT ADJACENT TO FLEXIBLE PAVEMENT DELETE EPOXY COATED TIE BARS.

⑤ LONGITUDINAL BARS, IF ENCOUNTERED IN THE EXISTING CURB OR CURB AND GUTTER, ARE NOT TO BE REPLACED. CUTTING AND REMOVING LONGITUDINAL BARS SHALL BE INCLUDED IN THE COST OF CURB OR CURB AND GUTTER REMOVAL AND REPLACEMENT.

⑥ THE COST OF HMA SURFACE REMOVAL IN THE EXISTING GUTTER FLAG SHALL BE INCLUDED IN THE COST OF THE CURB AND GUTTER REMOVAL AND REPLACEMENT.

⑦ THE REMOVAL AND REPLACEMENT OF THE EXISTING CURB OR CURB AND GUTTER SHALL BE DONE IN ACCORDANCE WITH THE APPLICABLE PORTIONS OF SECTION 440 AND 606 OF THE STANDARD SPECIFICATIONS.

⑧ THE LOCATIONS OF REMOVAL AND REPLACEMENT OF EXISTING CURB OR CURB AND GUTTER SHALL BE DETERMINED BY THE RESIDENT ENGINEER AT THE TIME OF CONSTRUCTION.

UNSUITABLE SUB-BASE MATERIAL TO BE REMOVED, IF DIRECTED BY THE ENGINEER, SHALL BE REPLACED WITH EITHER SUB-BASE GRANULAR MATERIAL, TYPE B OR ADDITIONAL THICKNESS OF CONCRETE.

REMOVAL AND REPLACEMENT 4" (100) OR LESS IS INCLUDED IN THE COST OF CURB OR CURB AND GUTTER REMOVAL AND REPLACEMENT.

REMOVAL AND REPLACEMENT IN EXCESS OF 4" (100) WILL BE PAID FOR IN ACCORDANCE WITH ARTICLE 109.04 OF THE STANDARD SPECIFICATIONS.

PROPOSED #6 (20) EPOXY COATED TIE BARS 24" (600) LONG AT 24" (600) CENTERS WILL NOT BE PAID FOR SEPARATELY. DELETE EPOXY COATED TIE BARS IF EXISTING TIE BARS ARE USUABLE AS DETERMINED BY THE ENGINEER. (SEE NOTE ③).

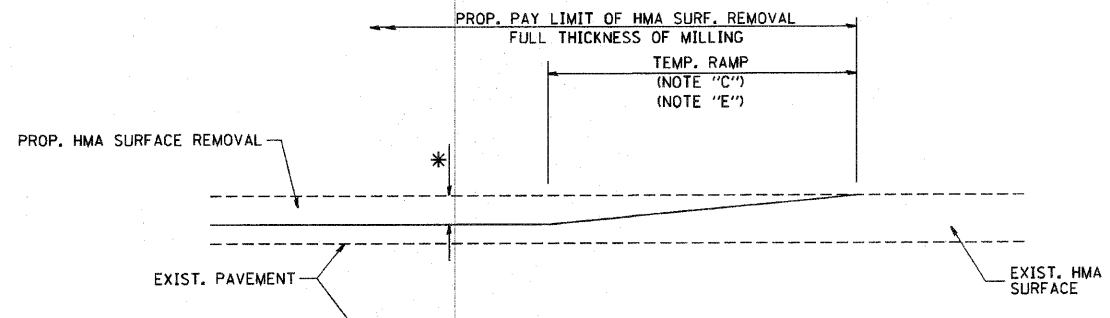
**BASIS OF PAYMENT:**

THIS WORK WILL BE PAID FOR AT THE CONTRACT UNIT PRICE PER FOOT (METER) FOR "CURB REMOVAL AND REPLACEMENT" OR "COMBINATION CONCRETE CURB AND GUTTER REMOVAL AND REPLACEMENT".

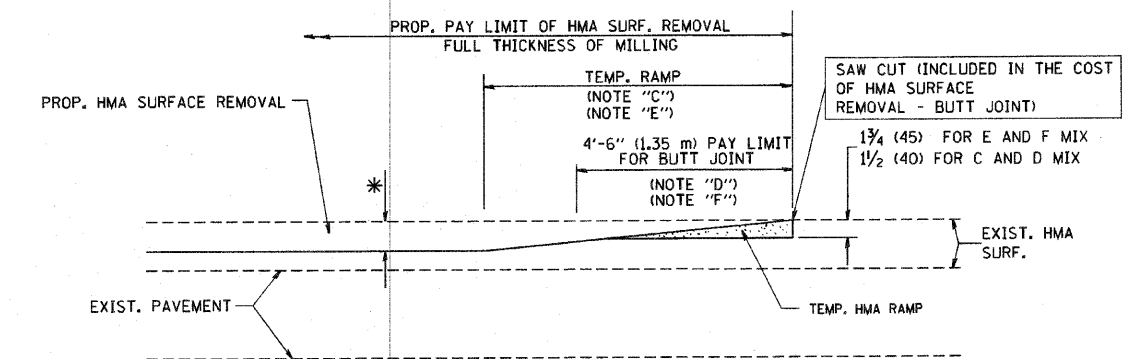
# CURB OR CURB AND GUTTER REMOVAL AND REPLACEMENT

ALL DIMENSIONS ARE IN INCHES (MILLIMETERS) UNLESS OTHERWISE SHOWN.

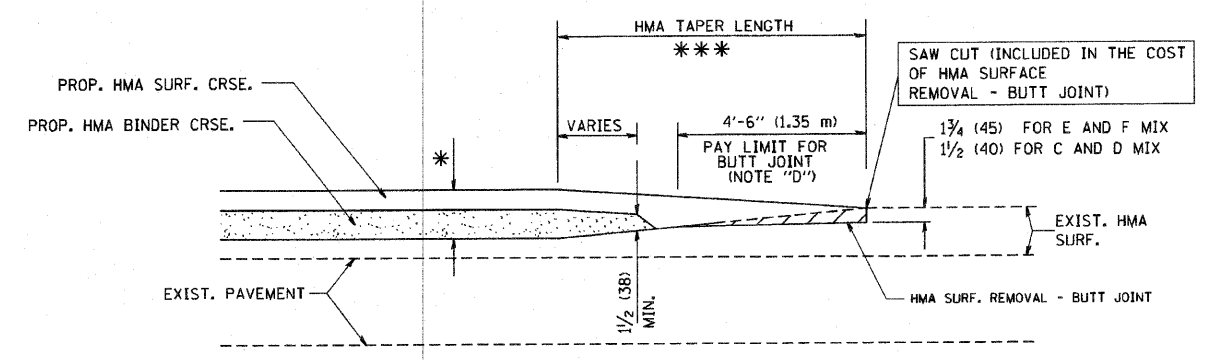
FILE NAME =	USER NAME = drvakosgn	DESIGNED - A. HOUSEH	REVISED - R. SHAH 10-03-96	<b>STATE OF ILLINOIS DEPARTMENT OF TRANSPORTATION</b>	<b>CURB OR CURB AND GUTTER REMOVAL AND REPLACEMENT</b>		F.A. RTE.	SECTION	COUNTY	TOTAL SHEETS	SHEET NO.	
c:\pwork\pwork\drvakosgn\40100315\bd4.dgn		DRAWN -	REVISED - A. ABBAS 03-21-97		SCALE: NONE	SHEET NO. 1 OF 1 SHEETS	STA.	TO STA.	10-00018-00-RS	COOK	11	7
		CHECKED -	REVISED - M. GOMEZ 01-22-01						<b>BD600-06 (BD-24)</b>	<b>CONTRACT NO. 63482</b>		
		DATE - 03-11-94	REVISED - R. BORO 12-15-09						FED. ROAD DIST. NO. 1	ILLINOIS FED. AID PROJECT	HPP-3461(003)	



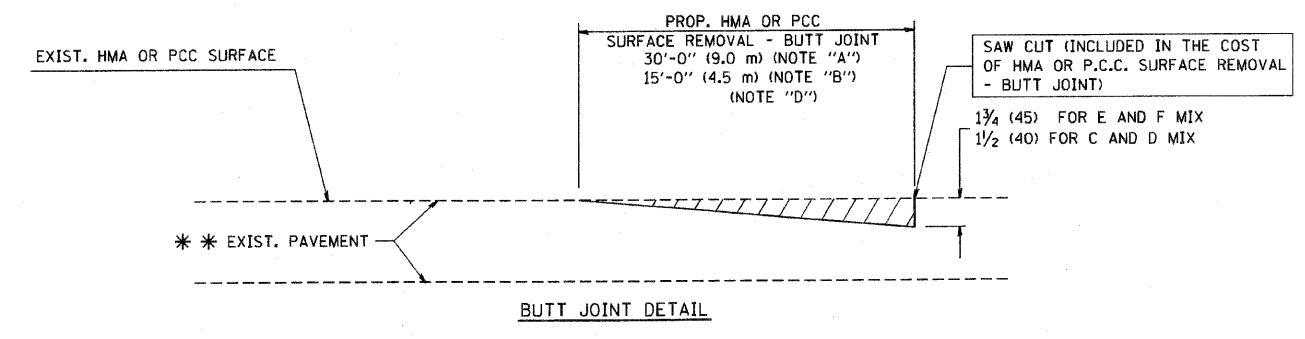
**OPTION 1**



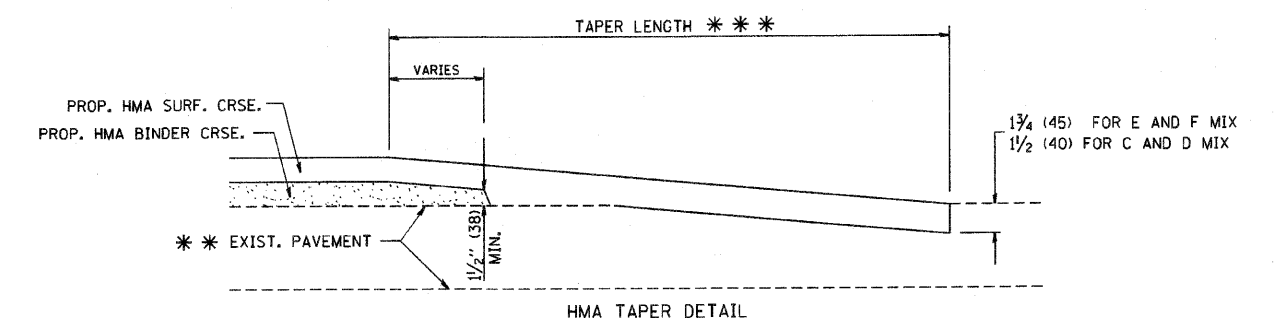
**OPTION 2  
TYPICAL TEMPORARY RAMP**



**TYPICAL BUTT JOINT AND HMA TAPER  
FOR MILLING AND RESURFACING**



**BUTT JOINT DETAIL**



**HMA TAPER DETAIL**

**TYPICAL BUTT JOINT AND HMA TAPER  
FOR RESURFACING ONLY**

\*\*\* PC CONCRETE, HMA OR HMA RESURFACED PAVEMENT.

**NOTES**

- A: MAINLINE ROADWAYS AND MAJOR SIDE ROADS.
  - B: MINOR SIDE ROADS.
  - C: THE TEMP. RAMP SHALL BE CONSTRUCTED IMMEDIATELY UPON REMOVAL OF THE EXISTING HMA SURFACE.
  - D: THE BUTT JOINT SHALL BE CONSTRUCTED IMMEDIATELY PRIOR TO PLACING THE PROPOSED HMA COURSES.
  - E: TAPER THE TEMP. RAMP AT A RATE OF 3'-0" (900 mm) PER 1 INCH (25 mm) OF MILLING THICKNESS.
  - F: INSTALLATION AND REMOVAL OF THE 4'-6" (1.35 m) TEMP. RAMP IS INCLUDED IN COST OF HMA SURFACE REMOVAL - BUTT JOINT
  - G: SEE ARTICLE 406.08 AND 406.14 OF THE STANDARD SPECIFICATIONS FOR "HMA AND/OR PCC SURFACE REMOVAL, BUTT JOINT".
- \* SEE TYPICAL SECTIONS FOR MILLING THICKNESS.
- \*\*\* 20'-0" (6.1 m) PER 1 (25) RESURFACING (NOTE "A")  
10'-0" (3.0 m) PER 1 (25) RESURFACING (NOTE "B")

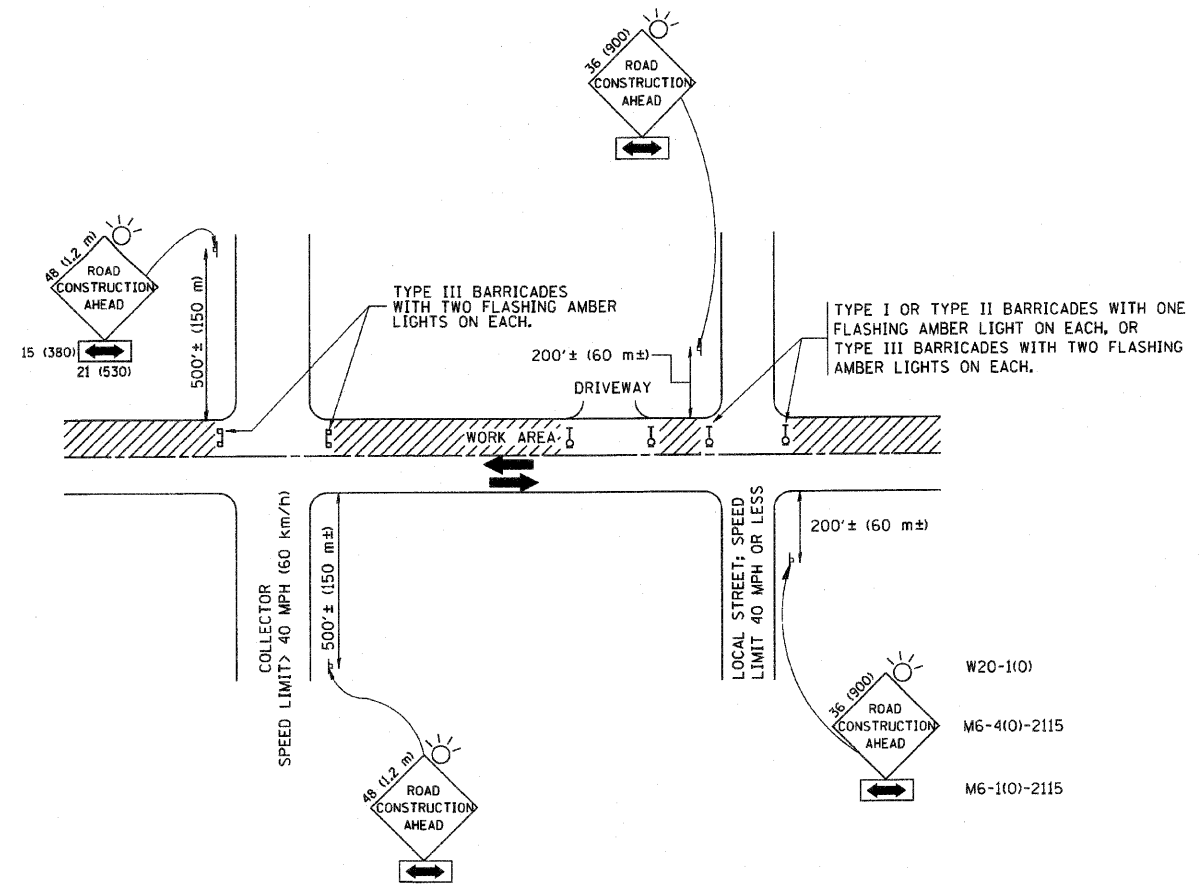
**BASIS OF PAYMENT:**

THE BUTT JOINT WILL BE PAID FOR AT THE CONTRACT UNIT PRICE PER SQUARE YARD (SQUARE METER) FOR "HOT-MIX ASPHALT SURFACE REMOVAL - BUTT JOINT" OR FOR "PORTLAND CEMENT CONCRETE SURFACE REMOVAL - BUTT JOINT".

ALL DIMENSIONS ARE IN INCHES (MILLIMETERS) UNLESS OTHERWISE SHOWN.

FILE NAME = W:\dststd\22x34\bd32.dgn	USER NAME = goglionobt	DESIGNED - M. DE YONG	REVISED - R. SHAH 10-25-94	<b>STATE OF ILLINOIS DEPARTMENT OF TRANSPORTATION</b>	<b>BUTT JOINT AND HMA TAPER DETAILS</b>		F.A. RTE.	SECTION	COUNTY	TOTAL SHEETS	SHEET NO.
		DRAWN -	REVISED - A. ABBAS 03-21-97		SCALE: NONE	SHEET NO. 1 OF 1 SHEETS	STA.	10-00018-00-RS	COOK	11	8
		CHECKED -	REVISED - M. GOMEZ 04-06-01					BD400-05	BD32	CONTRACT NO.	63482
		DATE - 06-13-90	REVISED - R. BORO 01-01-07					FED. ROAD DIST. NO. 1	ILLINOIS FED. AID PROJECT	HPP-3461(003)	





**TRAFFIC CONTROL AND PROTECTION FOR SIDE ROADS, INTERSECTIONS, AND DRIVEWAYS**

**NOTES:**

- A. FOR NO LANE RESTRICTION ON THE SIDE ROAD OR DRIVEWAYS
  1. SIDE ROAD WITH A SPEED LIMIT OF 40 MPH (60 km/h) OR LESS AS SHOWN ON THE DRAWING AND AS DIRECTED BY THE ENGINEER:
    - a) ONE ROAD CONSTRUCTION AHEAD SIGN 36 x 36 (900x900) WITH A FLASHER AND FLAG MOUNTED ON IT APPROXIMATELY 200' (60 m) IN ADVANCE OF THE MAIN ROUTE.
    - b) THE CLOSED PORTION OF THE MAIN ROUTE SHALL BE PROTECTED BY BLOCKING WITH TYPE I, TYPE II OR TYPE III BARRICADES, 1/3 OF THE CROSS SECTION OF THE CLOSED PORTION.
  2. SIDE ROAD WITH A SPEED LIMIT GREATER THAN 40 MPH (60 km/h) AS SHOWN ON THE DRAWING AND AS DIRECTED BY THE ENGINEER:
    - a) ONE ROAD CONSTRUCTION AHEAD SIGN 48 x 48 (1.2 m x 1.2 m) WITH A FLASHER MOUNTED ON IT APPROXIMATELY 500' (150 m) IN ADVANCE OF THE MAIN ROUTE.
    - b) THE CLOSED PORTION OF THE MAIN ROUTE SHALL BE PROTECTED BY BLOCKING WITH TYPE III BARRICADES, 1/2 OF THE CROSS SECTION OF THE CLOSED PORTION.
- B. FOR A LANE CLOSURE ON A SIDE ROAD OR DRIVEWAY:
 

USE APPLICABLE PORTIONS OF THE TYPICAL APPLICATION OF TRAFFIC CONTROL DEVICES (STD. 701501, STD. 701606 OR THE APPROPRIATE STANDARD). THE SPACING OF SIGNS AND BARRICADES SHALL BE ADJUSTED FOR FIELD CONDITIONS AS DIRECTED BY THE ENGINEER. THE DIRECTIONAL ARROW SHALL BE COVERED OR REMOVED WHEN NO LONGER CONSISTENT WITH THE SIDE ROAD LANE CLOSURE.
- C. ADVANCE WARNING SIGNS ARE TO BE OMITTED ON DRIVEWAY UNLESS OTHERWISE NOTED.
- D. THE TRAFFIC CONTROL AND PROTECTION FOR SIDE ROADS, INTERSECTIONS, AND DRIVEWAYS SHALL BE INCIDENTAL TO THE COST OF SPECIFIED TRAFFIC CONTROL STANDARDS OR ITEMS.

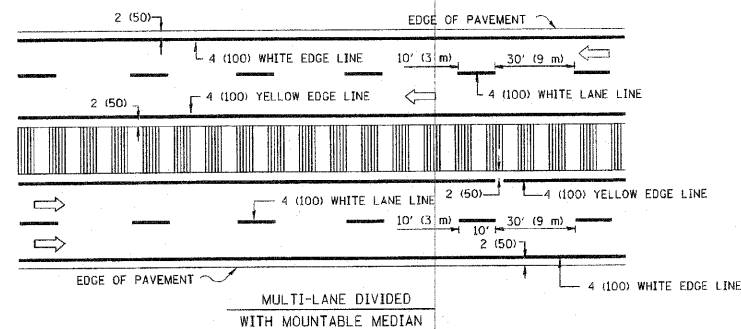
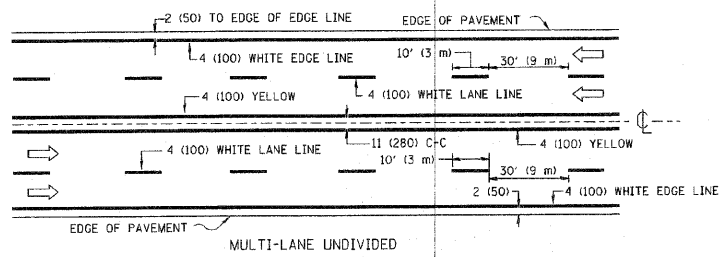
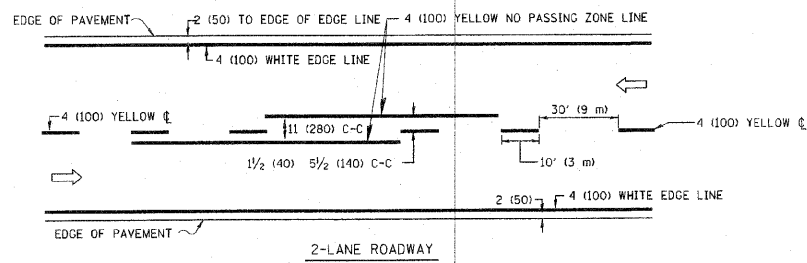
All dimensions are in millimeters (inches) unless otherwise shown.

FILE NAME = W:\diststd\22-34\to18.dgn	USER NAME = geglunobt	DESIGNED - LHA	REVISED - J. OBERLE 10-18-95
		DRAWN -	REVISED - A. HOUSEH 03-06-96
	PLOT SCALE = 50.000' / IN.	CHECKED -	REVISED - A. HOUSEH 10-15-96
	PLOT DATE = 1/4/2008	DATE - 06-89	REVISED - T. RAMMACHER 01-06-00

**STATE OF ILLINOIS  
DEPARTMENT OF TRANSPORTATION**

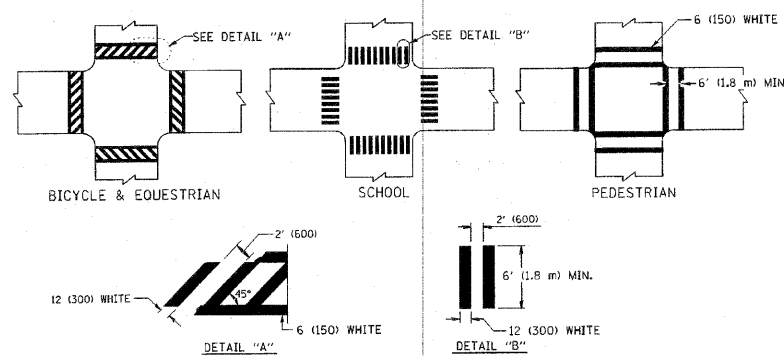
<b>TRAFFIC CONTROL AND PROTECTION FOR SIDE ROADS, INTERSECTIONS, AND DRIVEWAYS</b>			
SCALE: NONE	SHEET NO. 1 OF 1 SHEETS	STA.	TO STA.

F.A. RTE.	SECTION	COUNTY	TOTAL SHEETS	SHEET NO.
-	10-00018-00-RS	COOK	11	9
<b>TC-10</b>			<b>CONTRACT NO. 63482</b>	
FED. ROAD DIST. NO. 1 ILLINOIS FED. AID PROJECT HPP-3461(003)				

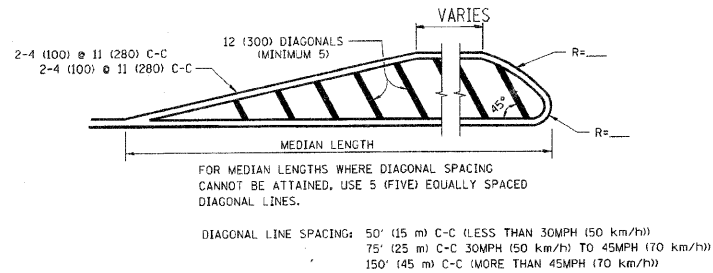
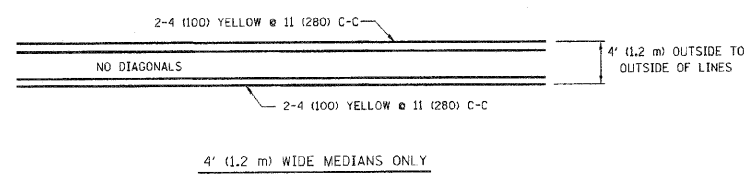


NOTE: MEDIANS WITH BARRIER CURB DO NOT REQUIRE AN EDGE LINE

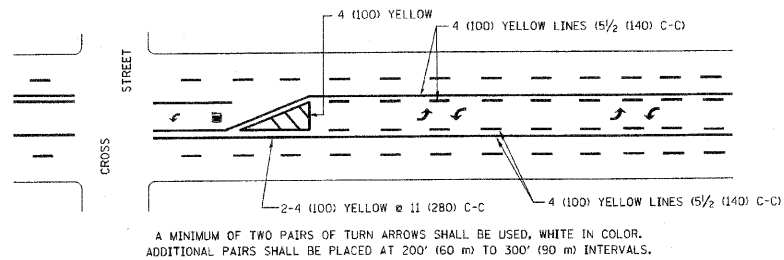
TYPICAL LANE AND EDGE LINE MARKING



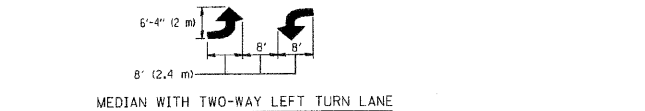
TYPICAL CROSSWALK MARKING



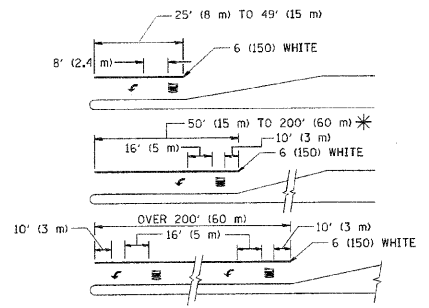
MEDIANS OVER 4' (1.2 m) WIDE



TYPICAL PAINTED MEDIAN MARKING

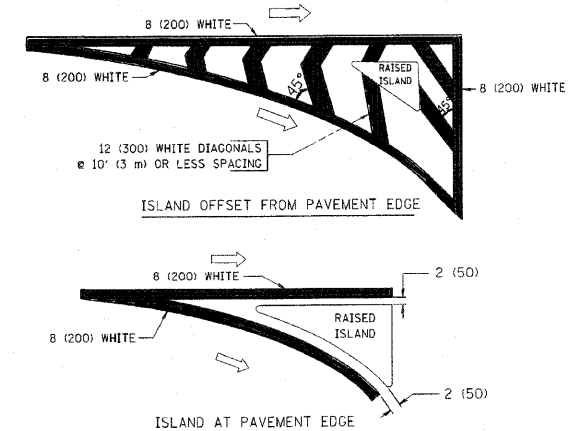


TYPICAL LEFT (OR RIGHT) TURN LANE



FULL SIZE LETTERS 8' (2.4 m) AND ARROWS SHALL BE USED.  
 \* AREA = 15.6 SQ. FT. (1.5 m<sup>2</sup>) ONLY AREA = 20.8 SQ. FT. (1.9 m<sup>2</sup>)  
 \* TURN LANES IN EXCESS OF 400' (120 m) IN LENGTH MAY HAVE AN ADDITIONAL SET OF ARROW - "ONLY" INSTALLED MIDWAY BETWEEN THE OTHER TWO SETS OF ARROW - "ONLY".

TYPICAL TURN LANE MARKING



TYPICAL ISLAND MARKING

TYPE OF MARKING	WIDTH OF LINE	PATTERN	COLOR	SPACING / REMARKS
CENTERLINE ON 2 LANE PAVEMENT	4 (100)	SKIP-DASH	YELLOW	10' (3 m) LINE WITH 30' (9 m) SPACE
CENTERLINE ON MULTI-LANE UNDIVIDED PAVEMENT	2 @ 4 (100)	SOLID	YELLOW	11 (280) C-C
NO PASSING ZONE LINES FOR ONE DIRECTION FOR BOTH DIRECTIONS	4 (100) 2 @ 4 (100)	SOLID SOLID	YELLOW YELLOW	5/2 (140) C-C FROM SKIP-DASH CENTERLINE 11 (280) C-C OMIT SKIP-DASH CENTERLINE BETWEEN
LANE LINES	4 (100) 5 (125) ON FREEWAYS	SKIP-DASH SKIP-DASH	WHITE WHITE	10' (3 m) LINE WITH 30' (9 m) SPACE
DOTTED LINES (EXTENSIONS OF CENTER, LANE OR TURN LANE MARKINGS)	SAME AS LINE BEING EXTENDED	SKIP-DASH	SAME AS LINE BEING EXTENDED	2' (600) LINE WITH 6' (1.8 m) SPACE
EDGE LINES	4 (100)	SOLID	YELLOW-LEFT WHITE-RIGHT	OUTLINE MOUNTABLE MEDIANS IN YELLOW; EDGE LINES ARE NOT USED NEXT TO BARRIER CURB
TURN LANE MARKINGS	6 (150) LINE; FULL SIZE LETTERS & SYMBOLS (8' (2.4m))	SOLID	WHITE	SEE TYPICAL TURN LANE MARKING DETAIL
TWO WAY LEFT TURN MARKING	2 @ 4 (100) EACH DIRECTION 8' (2.4m) LEFT ARROW	SKIP-DASH AND SOLID IN PAIRS	YELLOW WHITE	10' (3 m) LINE WITH 30' (9 m) SPACE FOR SKIP-DASH; 5/2 (140) C-C BETWEEN SOLID LINE AND SKIP-DASH LINE SEE TYPICAL TWO-WAY LEFT TURN MARKING DETAIL
CROSSWALK LINES (PEDESTRIAN) A. DIAGONALS (BIKE & EQUESTRIAN) B. LONGITUDINAL BARS (SCHOOL)	2 @ 6 (150) 12 (300) @ 45° 12 (300) @ 90°	SOLID SOLID SOLID	WHITE WHITE WHITE	NOT LESS THAN 6' (1.8 m) APART 2' (600) APART 2' (600) APART SEE TYPICAL CROSSWALK MARKING DETAILS.
STOP LINES	24 (600)	SOLID	WHITE	PLACE 4' (1.2 m) IN ADVANCE OF AND PARALLEL TO CROSSWALK, IF PRESENT. OTHERWISE, PLACE AT DESIRED STOPPING POINT, PARALLEL TO CROSSROAD CENTERLINE, WHERE POSSIBLE
PAINTED MEDIANS	2 @ 4 (100) WITH 12 (300) DIAGONALS @ 45° NO DIAGONALS USED FOR 4' (1.2 m) WIDE MEDIANS	SOLID	YELLOW; TWO WAY TRAFFIC WHITE; ONE WAY TRAFFIC	11 (280) C-C FOR THE DOUBLE LINE SEE TYPICAL PAINTED MEDIAN MARKING.
GORE MARKING AND CHANNELIZING LINES	8 (200) WITH 12 (300) DIAGONALS @ 45°	SOLID	WHITE	DIAGONALS: 15' (4.5 m) C-C (LESS THAN 30MPH (50 km/h)) 20' (6 m) C-C 30MPH (50 km/h) TO 45MPH (70 km/h) 30' (9 m) C-C (OVER 45MPH (70 km/h))
RAILROAD CROSSING	24 (600) TRANSVERSE LINES; "RR" IS 6' (1.8 m) LETTERS; 16 (400) LINE FOR "X"	SOLID	WHITE	SEE STATE STANDARD 780001 AREA OF: "R"=3.6 SQ. FT. (0.33 m <sup>2</sup> ) EACH "X"=54.0 SQ. FT. (5.0 m <sup>2</sup> )
SHOULDER DIAGONALS	12 (300) @ 45°	SOLID	WHITE - RIGHT YELLOW - LEFT	50' (15 m) C-C (LESS THAN 30MPH (50 km/h)) 75' (25 m) C-C (30 MPH (50 km/h) TO 45MPH (70 km/h)) 150' (45 m) C-C (OVER 45MPH (70 km/h))

FOR FURTHER DETAILS ON PAVEMENT MARKING REFER TO STANDARD SPECIFICATIONS FOR ROAD AND BRIDGE CONSTRUCTION AND STATE STANDARD 780001.

	LARGE SIZE	SMALL SIZE
THROUGH ARROW	1.07 (11.5)	0.60 (6.5)
LEFT OR RIGHT ARROW	1.47 (15.6)	0.60 (6.5)
COMBINATION LEFT (RIGHT) AND THROUGH ARROW	2.42 (26.0)	1.37 (14.7)
RAILROAD "R" 1.8m (6ft.)	0.33 (3.6)	—
RAILROAD "X" 6.1m (20ft.)	5.02(54.0)	—
HANDICAPPED SYMBOL	0.43 (4.6)	—

All dimensions are in inches (millimeters) unless otherwise shown.

FILE NAME =	USER NAME = drlvkosgn	DESIGNED - EVERS	REVISED - T. RAMMACHER 10-27-94
c:\pwwork\pwwork\drlvkosgn\d8120315\td	3dgn	DRAWN -	REVISED - C. JUCIUS 09-09-09
	PLOT SCALE = 50,000 / IN.	CHECKED -	REVISED -
	PLOT DATE = 9/9/2009	DATE - 03-19-90	REVISED -

STATE OF ILLINOIS  
 DEPARTMENT OF TRANSPORTATION

SCALE: NONE	SHEET NO. 1 OF 1 SHEETS	STA. TO STA.
-------------	-------------------------	--------------

F.A. RTE.	SECTION	COUNTY	TOTAL SHEETS	SHEET NO.
-	10-00018-00-RS	COOK	11	10
TC-13		CONTRACT NO. 63482		
FED. ROAD DIST. NO. 1 ILLINOIS FED. AID PROJECT HPP-3461(003)				

