

STATE OF ILLINOIS
DEPARTMENT OF TRANSPORTATION
DIVISION OF HIGHWAYS

PLANS FOR PROPOSED FEDERAL AID HIGHWAY

STREET LIGHTING

HARLEM AVENUE IL. 43(FAP 348) 71ST STREET TO NORTH OF 70TH STREET EAST FRONTAGE ROAD (FAU 3546) WEST FRONTAGE ROAD (FAU 3544) PROJECT NO.: ARA-M-9003(670) SECTION NO.: 10-00062-00-LT VILLAGE of BRIDGEVIEW, COOK COUNTY C-91-669-10

F. A. P. NO.	SECTION	COUNTY	TOTAL SHEETS	SHEET NO.
348	10-00062-00-LT	COOK	15	1
STA. SEE MAP BELOW		TO STA. SEE MAP BELOW		
FED. ROAD DIST. NO. 1	ILLINOIS	FED. AID PROJECT	ARA-M-9003(670)	

CONTRACT #63486

INDEX OF SHEETS

1. COVER SHEET
2. SUMMARY OF QUANTITIES
- 3.-4. STREET LIGHTING PLANS
- 5.-6. SINGLE LINE WIRING DIAGRAM
- 7.-15. DETAIL DRAWINGS

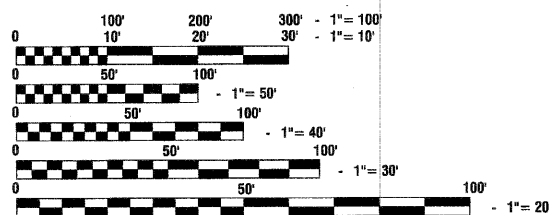
STATE STANDARDS

- | | |
|-----------|--|
| 000001-05 | STANDARD SYMBOLS, ABBREVIATIONS AND PATTERNS |
| 701501-05 | URBAN LANE CLOSURE, 2L, 2W, UNDIVIDED |
| 701606-06 | URBAN LANE CLOSURE, MULTILANE, 2W, WITH MOUNTABLE MEDIAN |
| 701701-06 | URBAN LANE CLOSURE, MULTILANE INTERSECTION |
| 701801-04 | LANE CLOSURE, MULTILANE 1W OR 2W CROSSWALK OR SIDEWALK CLOSURE |
| 701901-01 | TRAFFIC CONTROL DEVICES |

HARLEM AVENUE URBAN ARTERIAL ADT=42,050 (2009) =45,000 (2030) DESIGN SPEED=40 MPH SPEED LIMIT=35 MPH	EAST FRONTAGE ROAD ADT=800 (2009) =800 (2030) DESIGN SPEED=25 MPH SPEED LIMIT=20 MPH	WEST FRONTAGE ROAD ADT=800 (2009) =800 (2030) DESIGN SPEED=25 MPH SPEED LIMIT=20 MPH
---	---	---

SCALES

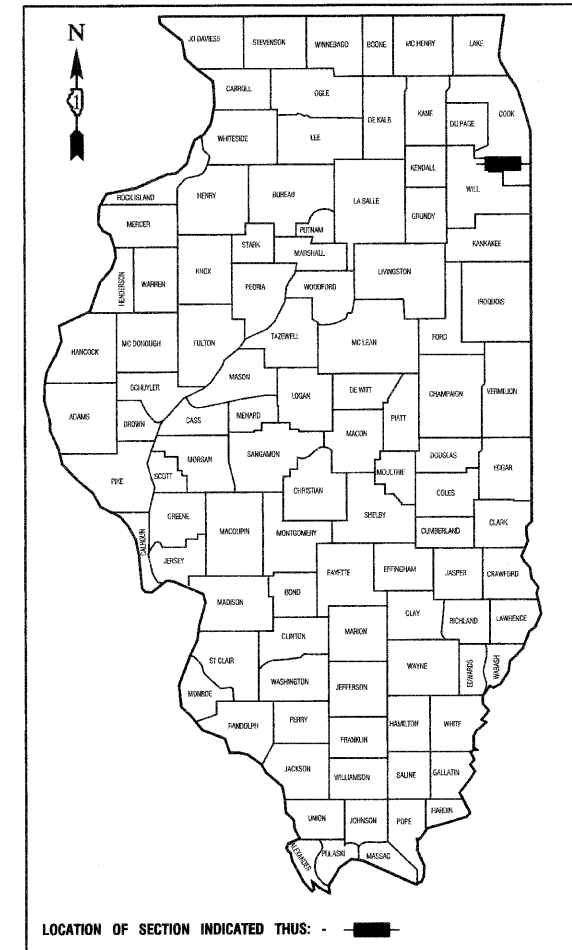
PLAN -	1"=50'
PROFILE HORIZ. -	1"=50'
PROFILE VERT. -	1"=5'
CROSS SECTIONS -	1"=10'



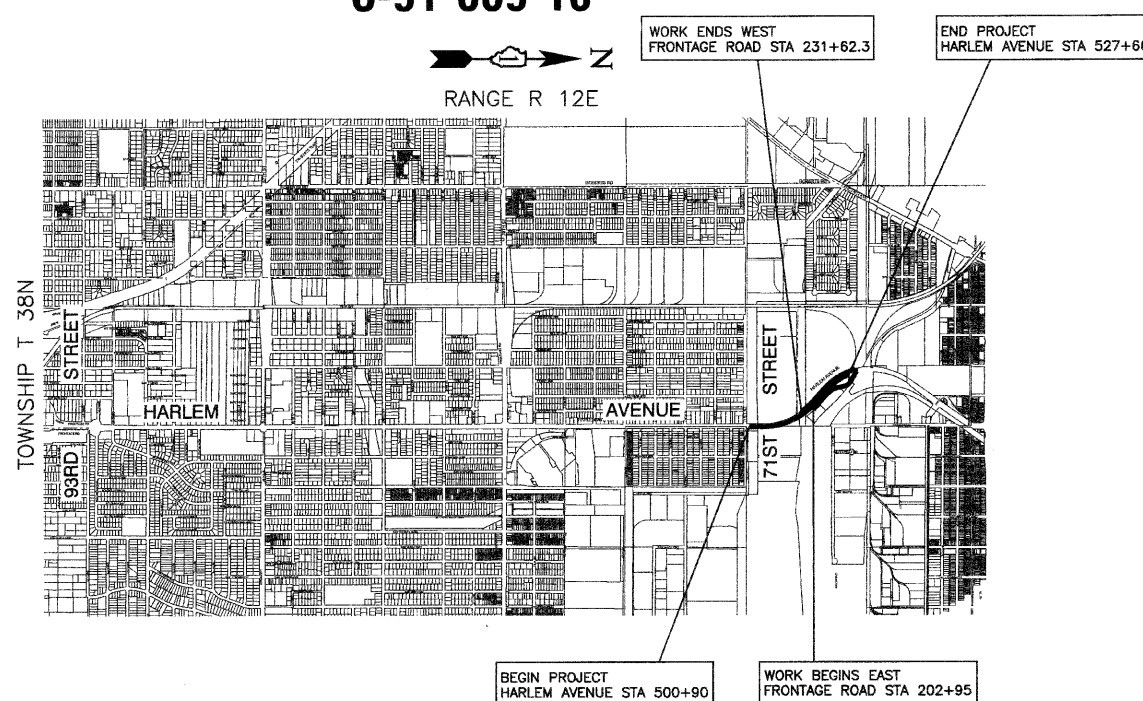
FULL SIZE PLANS HAVE BEEN PREPARED USING STANDARD ENGINEERING SCALES. REDUCED SIZED PLANS WILL NOT CONFORM TO STANDARD SCALES. IN MAKING MEASUREMENTS ON REDUCED PLANS, THE ABOVE SCALES MAY BE USED.

J. U. L. I. E.
JOINT UTILITY LOCATION INFORMATION FOR EXCAVATION
1-800-892-0123 or 811

CONTRACT NO. 63486



LOCATION OF SECTION INDICATED THUS: - [black rectangle] -



LOCATION MAP

- INDICATES PROPOSED IMPROVEMENT
GROSS LENGTH=5,543 FEET=1.05 MILES
NET LENGTH=5,543 FEET=1.05 MILES

STATE OF ILLINOIS DEPARTMENT OF TRANSPORTATION
DIVISION OF HIGHWAYS

Approved: 6-29-2010
Glenn
President, Village of Bridgeview

Passed: July 12, 2010
Chas
District 1 Engineer of Local Roads & Streets

Released for Bid Based on Limited Review: JULY 15, 2010
Diane M. O'Keefe
Deputy Director of Highways, Region 1 Engineer

PRINTED BY THE AUTHORITY OF
THE STATE OF ILLINOIS

PREPARED BY OR UNDER THE DIRECT SUPERVISION OF:

Edward J. Tunick
6-28-2010



LICENSE EXPIRES: 11/30/11

PROGRAM AND OFFICE ENGINEER: CHARLES F. RIDDLE, P.E. 847-705-4406 SCHAUMBURG, IL.
CONSULTANTS: ROBINSON ENGINEERING, LTD. 708-331-6700