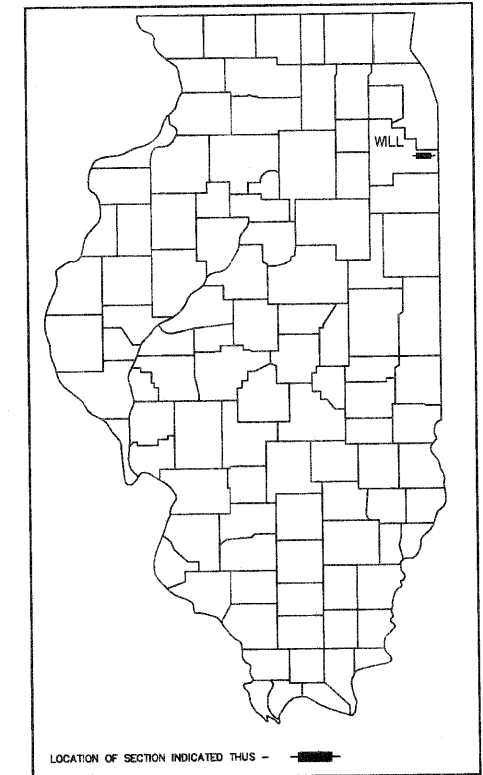


PROGRAM AND OFFICE ENGINEER: CHARLES F. RIDDLE, P.E. 847-705-4406 SCHAUMBURG, IL

STATE OF ILLINOIS  
DEPARTMENT OF TRANSPORTATION  
DIVISION OF HIGHWAYS  
**PLANS FOR PROPOSED  
FEDERAL AID HIGHWAY**

F.A.U. ROUTE 4305 (BURVILLE RD.)  
F.A.P. 876 (DIXIE HIGHWAY) TO STATE STREET  
SECTION: 10-00046-00-RS  
PROJECT NO. ARA-9003 (675)  
RESURFACING  
VILLAGE OF CRETE  
WILL COUNTY, ILLINOIS  
C-91-695-10

F.A.U. RTE.	SECTION	COUNTY	TOTAL SHEETS	SHEET NO.
4305	10-00046-00-RS	WILL	14	1
FED. ROAD DIST. NO. 1		ILLINOIS	CONTRACT NO. 63490	

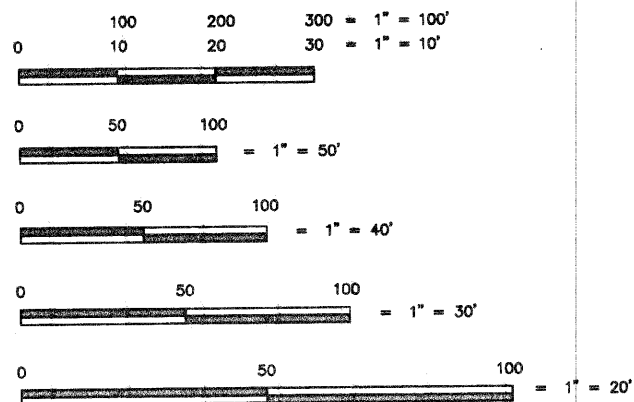


THE IMPROVEMENT IS LOCATED  
IN THE VILLAGE OF CRETE & UNINCORPORATED CRETE TOWNSHIP

DESIGN DESIGNATION = URBAN COLLECTOR

AVERAGE DAILY TRAFFIC  
2010 A.D.T. = 1,450

POSTED SPEED LIMIT BURVILLE RD.  
POSTED SPEED LIMIT = 35 & 50 m.p.h.  
DESIGN SPEED LIMIT = 35 & 50 m.p.h.



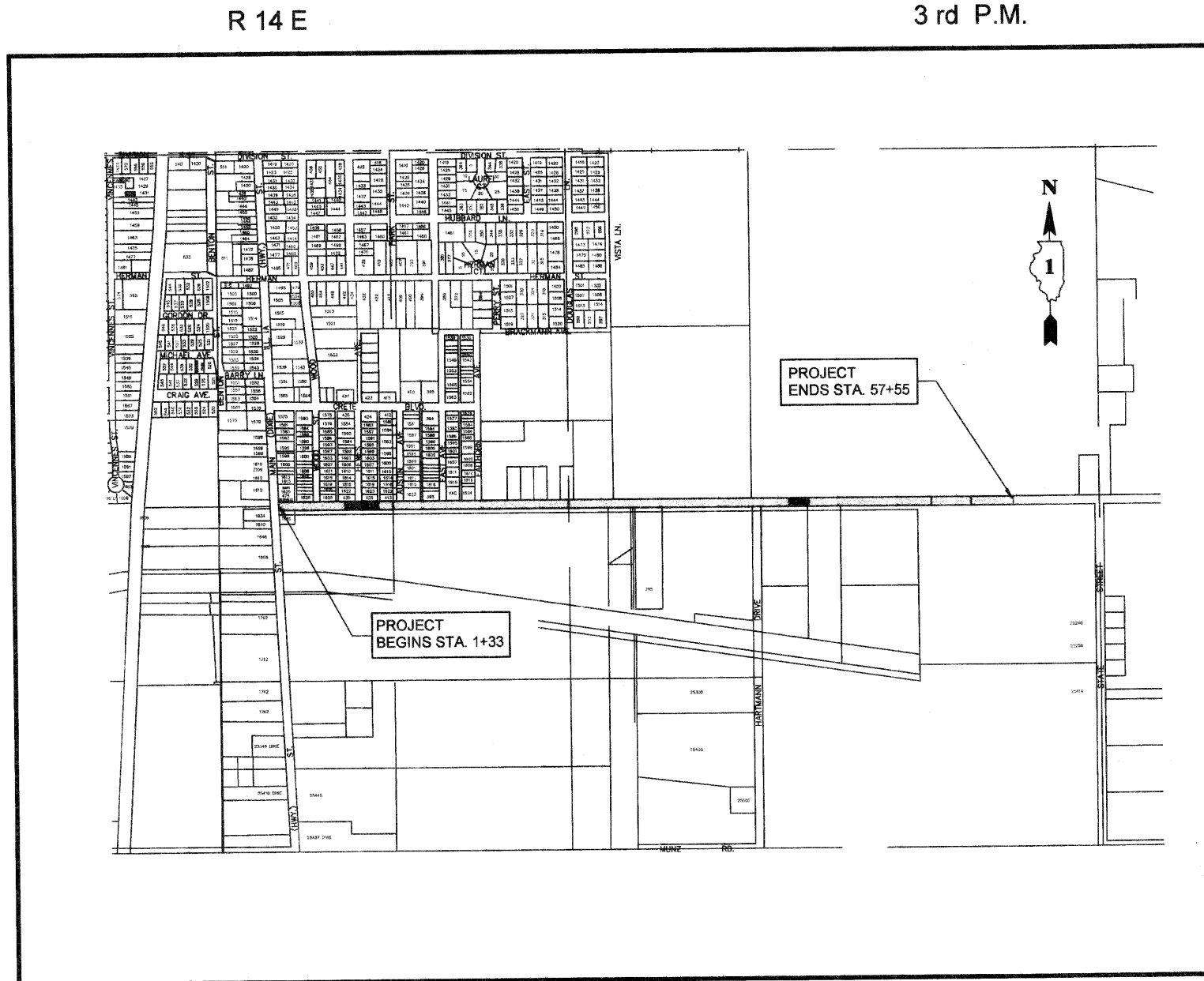
FULL SIZE PLANS HAVE BEEN PREPARED USING STANDARD ENGINEERING SCALES. REDUCED SIZE PLANS WILL NOT CONFORM TO STANDARD SCALES. IN MAKING MEASUREMENTS ON REDUCED SIZE PLANS, THE ABOVE SCALES MAY BE USED.

CONTRACT NO. 63490

ILLINOIS PROFESSIONAL DESIGN FIRM NO. 184-002235

**TECH 3** Consulting Group, Inc.

JOB NO.	ENGINEERS	SURVEYORS
10908	737 West Exchange St. Crete, IL 60417	
	ph 708 672 4904	fax 708 672 3739



CRETE TOWNSHIP LOCATION MAP  
GROSS AND NET LENGTH OF IMPROVEMENT = 5622 FEET (1.065 MILES)

STATE OF ILLINOIS  
DEPARTMENT OF TRANSPORTATION  
DIVISION OF HIGHWAYS

APPROVED 6/29/10  
*Phil Hornists*  
VILLAGE OF CRETE, SUPERINTENDENT OF PUBLIC WORKS

PASSED July 12, 2010  
*Charles Holt*  
REGION ONE ENGINEER OF LOCAL ROADS & STREETS

RELEASING FOR BID BASED  
ON LIMITED REVIEW JULY 15, 2010  
*Diane M. O'Keefe*  
DEPUTY DIRECTOR OF HIGHWAYS, REGION 1 ENGINEER

*[Signature]*

ROBERT W. MATTHEY, P.E.  
LICENSE NO. 062 - 039765  
LICENSE EXPIRES: 11/30/11  
TECH 3 CONSULTING GROUP, INC.

PRINTED BY THE AUTHORITY  
OF THE STATE OF ILLINOIS