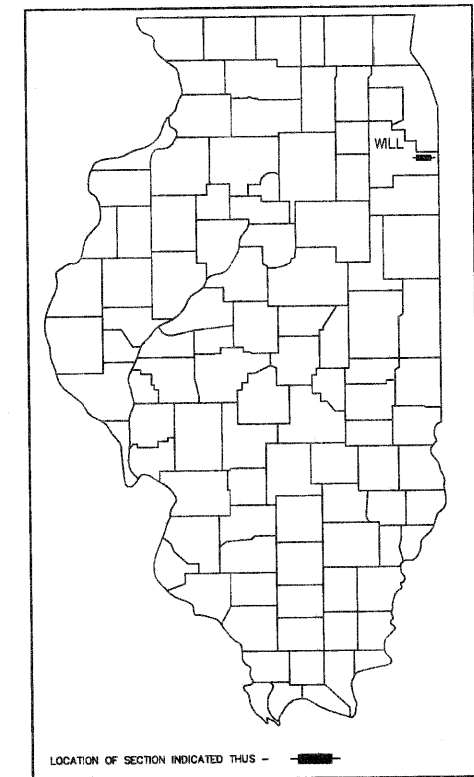


PROGRAM AND OFFICE ENGINEER: CHARLES F. RIDDLE, P.E. 847-705-4406 SCHAUMBURG, IL

STATE OF ILLINOIS
DEPARTMENT OF TRANSPORTATION
DIVISION OF HIGHWAYS
**PLANS FOR PROPOSED
FEDERAL AID HIGHWAY**

F.A.U. ROUTE 4305 (BURVILLE RD.)
F.A.P. 876 (DIXIE HIGHWAY) TO STATE STREET
SECTION: 10-00046-00-RS
PROJECT NO. ARA-9003 (675)
RESURFACING
VILLAGE OF CRETE
WILL COUNTY, ILLINOIS
C-91-695-10

F.A.U. RTE.	SECTION	COUNTY	TOTAL SHEETS	SHEET NO.
4305	10-00046-00-RS	WILL	14	1
FED. ROAD DIST. NO. 1		ILLINOIS	CONTRACT NO. 63490	



THE IMPROVEMENT IS LOCATED
IN THE VILLAGE OF CRETE & UNINCORPORATED CRETE TOWNSHIP

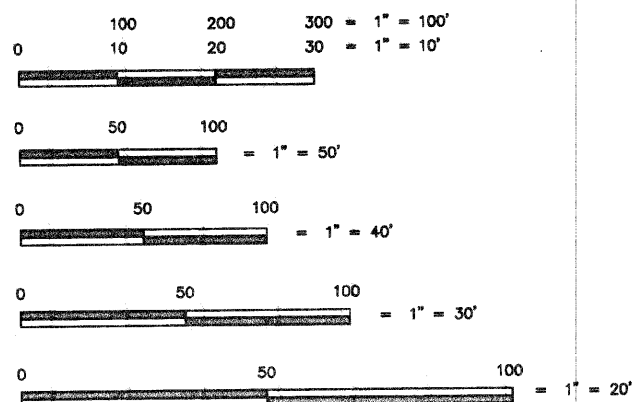
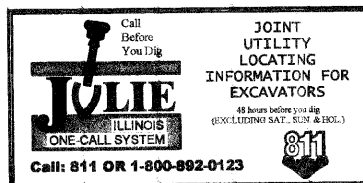
DESIGN DESIGNATION = URBAN COLLECTOR

AVERAGE DAILY TRAFFIC
2010 A.D.T. = 1,450

POSTED SPEED LIMIT BURVILLE RD.
POSTED SPEED LIMIT = 35 & 50 m.p.h.
DESIGN SPEED LIMIT = 35 & 50 m.p.h.

R 14 E

3 rd P.M.



FULL SIZE PLANS HAVE BEEN PREPARED USING STANDARD ENGINEERING SCALES. REDUCED SIZE PLANS WILL NOT CONFORM TO STANDARD SCALES. IN MAKING MEASUREMENTS ON REDUCED SIZE PLANS, THE ABOVE SCALES MAY BE USED.

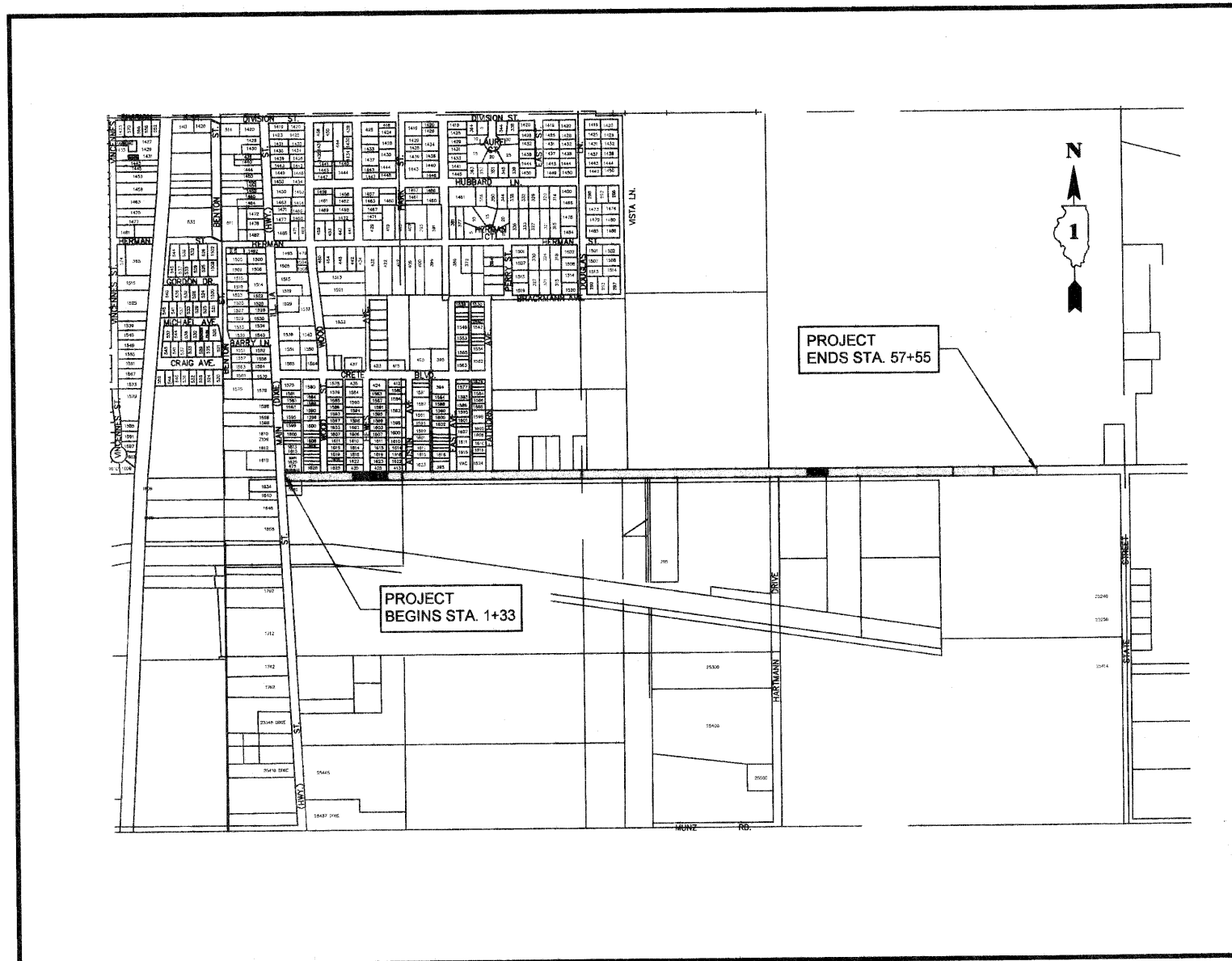
CONTRACT NO. 63490

ILLINOIS PROFESSIONAL DESIGN FIRM NO. 184-002235

TECH 3 Consulting Group, Inc.

JOB NO.	ENGINEERS	SURVEYORS
10908	737 West Exchange St. Crete, IL 60417	
	ph 708 672 4904	fax 708 672 3739

T 34 N



CRETE TOWNSHIP

LOCATION MAP

GROSS AND NET LENGTH OF IMPROVEMENT = 5622 FEET (1.065 MILES)

STATE OF ILLINOIS
DEPARTMENT OF TRANSPORTATION
DIVISION OF HIGHWAYS

APPROVED 6/29/10
Phil Hornists
VILLAGE OF CRETE, SUPERINTENDENT OF PUBLIC WORKS

PASSED July 12, 2010
Charles Holt
REGION ONE ENGINEER OF LOCAL ROADS & STREETS

RELEASING FOR BID BASED
ON LIMITED REVIEW JULY 15, 2010
Diane M. O'Keefe
DEPUTY DIRECTOR OF HIGHWAYS, REGION 1 ENGINEER

[Signature]
ROBERT W. MATTHEY, P.E.
LICENSE NO. 062 - 039765
LICENSE EXPIRES: 11/30/11
TECH 3 CONSULTING GROUP, INC.



PRINTED BY THE AUTHORITY
OF THE STATE OF ILLINOIS

SUMMARY OF QUANTITIES

PAY ITEM CODE #	DESCRIPTION	UNIT	QUANTITY 1000
21101615	TOPSOIL FURNISH AND PLACE, 4"	SQ YD	7
25200100	SODDING	SQ YD	7
40600100	BITUMINOUS MATERIALS (PRIME COAT)	GALLON	2,175
x406 0826	POLYMERIZED LEVELING BINDER (MACHINE METHOD), IL-4.75, N50	TON	833
40600982	HOT-MIX ASPHALT SURFACE REMOVAL - BUTT JOINT	SQ YD	1,230
40603085	HOT-MIX ASPHALT BINDER COURSE, IL-19.0, N70	TON	102
40603310	HOT-MIX ASPHALT SURFACE COURSE, MIX "C", N50	TON	1,926
44000200	DRIVEWAY PAVEMENT REMOVAL	SQ YD	889
44000500	COMBINATION CURB AND GUTTER REMOVAL	FOOT	40
44201705	CLASS D PATCHES, TYPE II, 5 INCH	SQ YD	202
44201709	CLASS D PATCHES, TYPE III, 5 INCH	SQ YD	257
44201711	CLASS D PATCHES, TYPE IV, 5 INCH	SQ YD	2,137
48101200	AGGREGATE SHOULDERS, TYPE B	TON	536
60250200	CATCH BASINS TO BE ADJUSTED	EACH	4
60255500	MANHOLES TO BE ADJUSTED	EACH	14
60608300	COMBINATION CONCRETE CURB AND GUTTER, TYPE M-2.12	FOOT	40
67100100	MOBILIZATION	L SUM	1
70102620	TRAFFIC CONTROL AND PROTECTION, STANDARD 701501	L SUM	1
70102640	TRAFFIC CONTROL AND PROTECTION, STANDARD 701801	L SUM	1
* 78001130	PAINT PAVEMENT MARKING - LINE 6"	FOOT	68
* 78001180	PAINT PAVEMENT MARKING - LINE 24"	FOOT	104

* = SPECIALTY ITEMS

INDEX OF SHEETS

SHEET NO.	DESCRIPTION
1	COVER SHEET
2	SUMMARY OF QUANTITIES, SYMBOLS, INDEX OF SHEETS, GENERAL NOTES, HIGHWAY STANDARDS
3	ALIGNMENT & TIES/TYPICAL SECTIONS
4	SITE PLAN - STA. 1+33 TO 12+00
5	SITE PLAN - STA. 12+00 TO 24+00
6	SITE PLAN - STA. 24+00 TO 36+00
7	SITE PLAN - STA. 36+00 TO 48+00
8	SITE PLAN - STA. 48+00 TO 57+55 END
9	DRIVEWAY DETAILS, DISTANCE BETWEEN R.O.W. AND FACE OF CURB & EDGE OF SHOULDER >= 15' (BD-01)
10	DRIVEWAY DETAILS, DISTANCE BETWEEN R.O.W. AND FACE OF CURB, 15' (BD-02)
11	PAVEMENT PATCHING FOR HMA SURFACED PAVEMENT (BD-22)
12	BUTT JOINT AND HMA TAPER DETAILS (BD-32)
13	TRAFFIC CONTROL AND PROTECTION FOR SIDE ROADS, INTERSECTIONS, AND DRIVEWAYS (TC-10)
14	DISTRICT ONE TYPICAL PAVEMENT MARKINGS (TC-13)

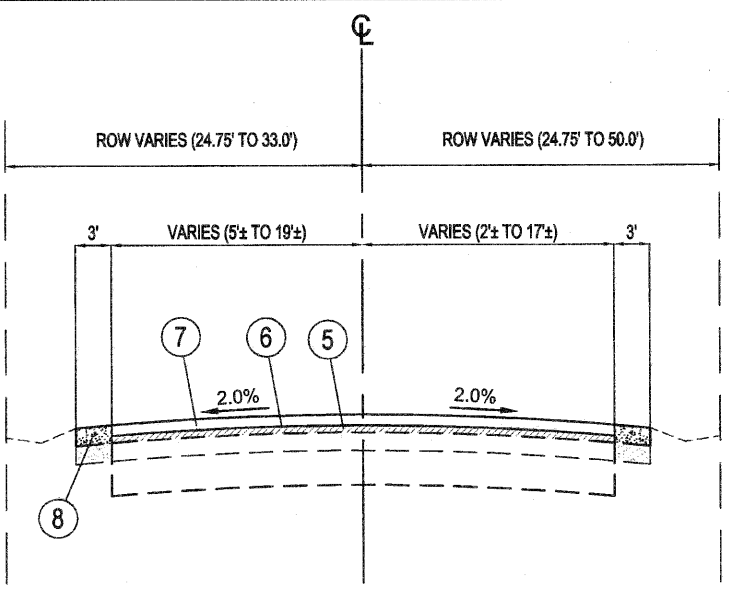
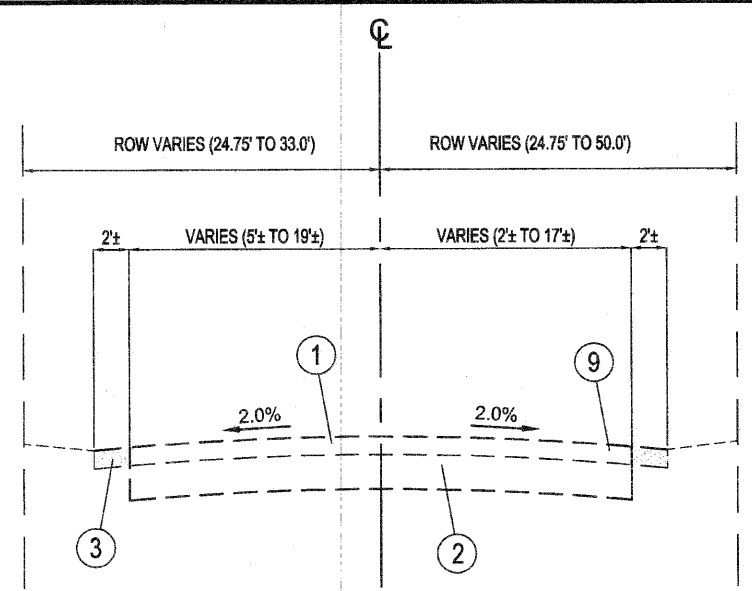
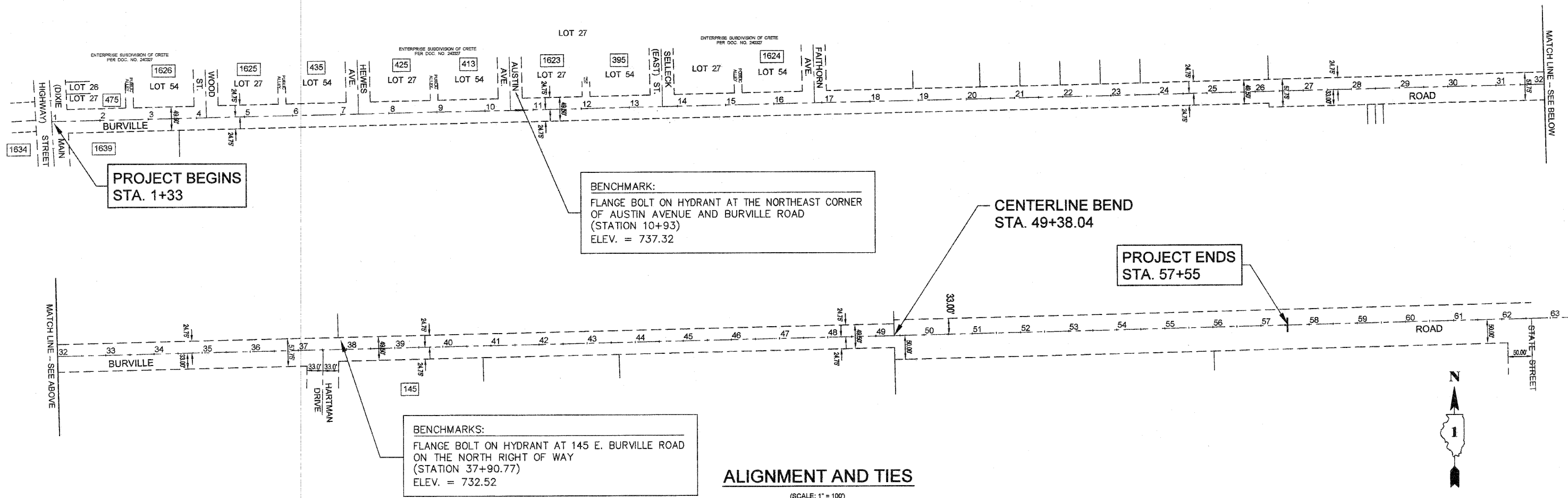
GENERAL NOTES :

- ALL CONSTRUCTION SHALL CONFORM TO THE ILLINOIS SOCIETY OF PROFESSIONAL ENGINEERS "STANDARD SPECIFICATIONS FOR WATER AND SEWER MAIN CONSTRUCTION IN ILLINOIS" IN ITS LATEST EDITION AND THE ILLINOIS DEPARTMENT OF TRANSPORTATION "STANDARD SPECIFICATIONS FOR ROAD AND BRIDGE CONSTRUCTION" IN ITS LATEST EDITION AND SUPPLEMENTAL SPECIFICATIONS AND RECURRING SPECIAL PROVISIONS.
- THE CONTRACTOR SHALL NOTIFY THE ENGINEER SHALL BE NOTIFIED 2 WORKING DAYS PRIOR TO COMMENCING OF CONSTRUCTION.
- THE CONTRACTOR SHALL NOTIFY ALL UTILITY COMPANIES FOR FIELD LOCATIONS OF THEIR FACILITIES PRIOR TO CONSTRUCTION. THE CONTRACTOR SHALL BE RESPONSIBLE FOR MAINTENANCE AND PRESERVATION OF THESE FACILITIES. CALL J.U.L.I.E. 800/892-0123 OR 811.
- AT THE END OF EACH CONSTRUCTION DAY ALL ROADS SHALL BE CLEANED OF MUD AND OPENED FOR TRAFFIC IN ACCORDANCE WITH ARTICLE 107.15. THE CONTRACTOR IS RESPONSIBLE FOR ALL TRAFFIC CONTROL EQUIPMENT.
- ALL PAVEMENT MARKINGS SHALL BE PAINT PAVEMENT MARKINGS PER SECTION 780 OF THE STANDARD SPECIFICATIONS FOR ROAD AND BRIDGE CONSTRUCTION.
- ALL BENCHMARK ELEVATIONS ARE BASED ON THE N.G.V.D. 1929 DATUM.

INDEX OF STATE STANDARDS

000001-05	STANDARD SYMBOLS, ABBREVIATIONS AND PATTERNS
442201-03	CLASS C AND D PATCHES
701501-05	URBAN LANE CLOSURE, 2L, 2W, UNDIVIDED
701801-04	LANE CLOSURE, MULTILANE 1W OR 2W CROSSWALK OR SIDEWALK CLOSURE
701901-01	TRAFFIC CONTROL DEVICES





EXISTING TYPICAL SECTION
STA 1+33 TO STA 57+55, BURVILLE ROAD

PROPOSED TYPICAL SECTION
STA 1+33 TO STA 57+55, BURVILLE ROAD

TYPICAL CROSS SECTIONS
(NOT TO SCALE)

LEGEND

- ① EXISTING HOT-MIX ASPHALT PAVEMENT 4" (+/-)
- ② EXISTING AGGREGATE BASE (DEPTH UNKNOWN)
- ③ EXISTING AGGREGATE SHOULDERS
- ④ BITUMINOUS MATERIALS (PRIME COAT) (0.15 GAL./S.Y.)
- ⑤ POLYMERIZED LEVELING BINDER (MACHINE METHOD), IL-4.75, N50, 1"
- ⑦ HOT MIX ASPHALT SURFACE COURSE, MIX "C", N60, 2 1/4"
- ⑧ AGGREGATE SHOULDERS, TYPE B
- ⑨ HOT-MIX ASPHALT SURFACE REMOVAL - BUTT JOINT

NOTE: CONTRACTOR SHALL MILL BEFORE PATCHING

HOT-MIX ASPHALT MIXTURE REQUIREMENTS

MIXTURE TYPE	AIR VOIDS (%)
PAVEMENT RESURFACING:	
HOT-MIX ASPHALT SURFACE COURSE, MIX "C", N50 (IL-9.5mm), 2 1/4"	4% @ 50 GYR.
POLYMERIZED LEVELING BINDER (MACHINE METHOD), IL-4.75, N50, 1"	4% @ 50 GYR.
CLASS D PATCHES:	
CLASS D PATCHES (HOT-MIX ASPHALT BINDER, IL-19.0, N70), 5'	4% @ 70 GYR.
HMA DRIVEWAY PAVEMENT:	
HOT-MIX ASPHALT SURFACE COURSE, MIX "C", N50 (IL-9.5mm), 2"	4% @ 50 GYR.
HOT-MIX ASPHALT BINDER COURSE, IL-19.0, N70, 5'	4% @ 50 GYR.

NOTES:
THE UNIT WEIGHT USED TO CALCULATE THE SURFACE MIXTURE IS 112 LB./S.Y./IN.
THE "AC TYPE" FOR POLYMERIZED HMA MIXES SHALL BE "SBS/SBR PG 70-22" AND FOR NON-POLYMERIZED HMA THE "AC TYPE" SHALL BE "PG 64-22" UNLESS MODIFIED BY DISTRICT ONE SPECIAL PROVISIONS. FOR "PERCENT OF RAP" SEE DISTRICT ONE SPECIAL PROVISIONS.

TECH 3 Consulting Group, Inc.
ENGINEERS SURVEYORS
737 West Exchange St., O'Fallon, IL 60417
PH 708.672.4804 FAX 708.672.3730
ILLINOIS PROFESSIONAL DESIGN FIRM NO. 184-002235

USER NAME =
DESIGNED BY = JSB
DRAWN BY = JJJ
PLOT SCALE =
CHECKED BY = RWM
PLOT DATE =
DATE = 4/27/10

REVISED - 6/8/10 PER IDOT
REVISED - 6/28/10 PER IDOT
REVISED -
REVISED -

STATE OF ILLINOIS
DEPARTMENT OF TRANSPORTATION

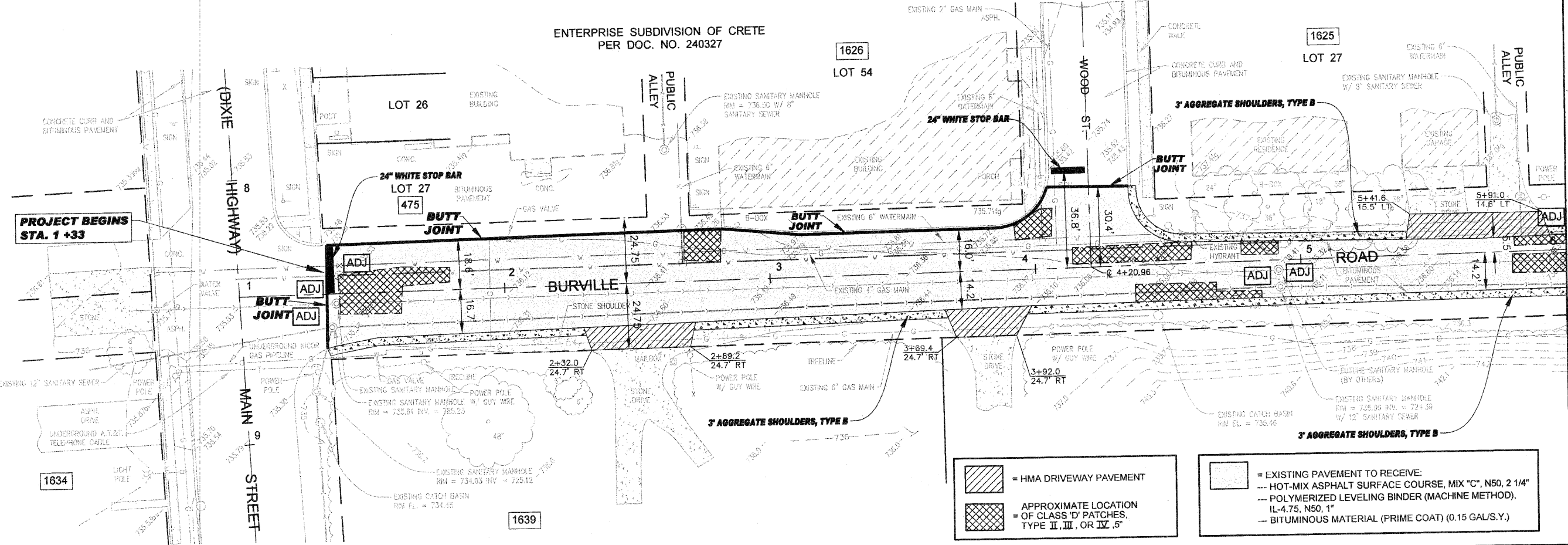


Village of CRETE
WILL COUNTY, ILLINOIS

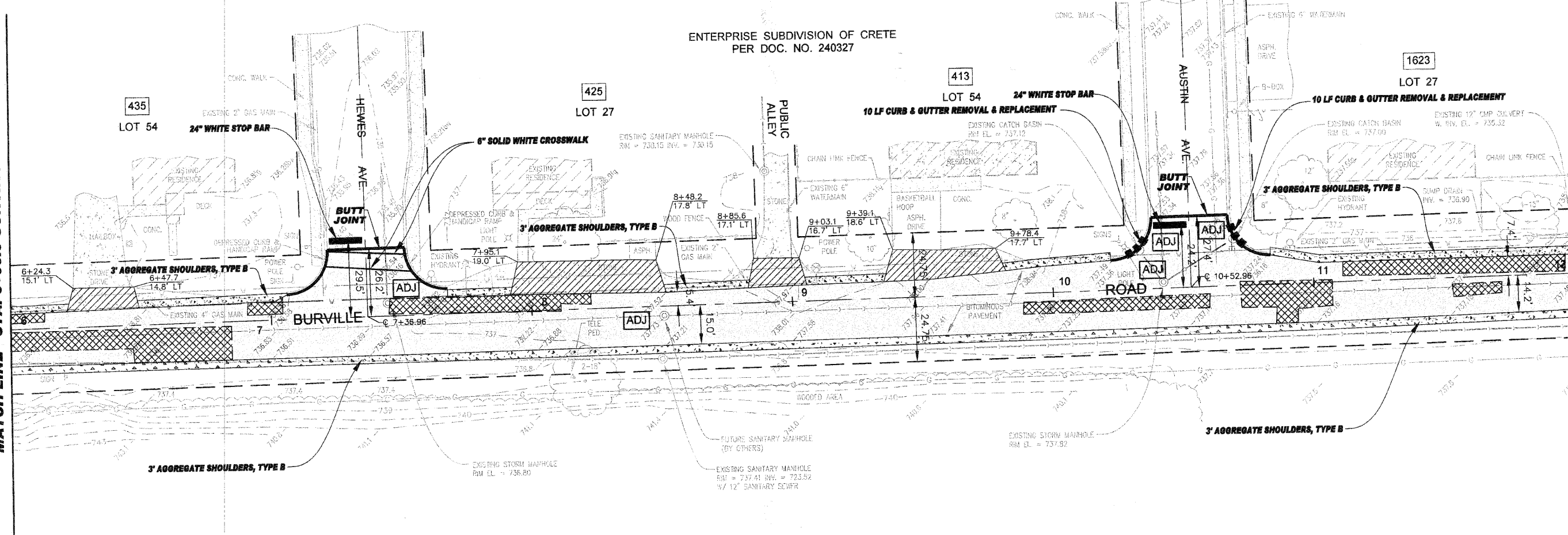
BURVILLE ROAD RESURFACING
ALIGNMENT & TIES/ TYPICAL SECTIONS

F.A.U. RTE.	SECTION	COUNTY	TOTAL SHEET	SHEET NO.
4305	10-00046-00-RS	WILL	14	3
FED. ROAD DIST. NO. 1		CONTRACT NO. 63490		
		FED. AID PROJECT		

SCALE: 1" = 100' SHEET NO. 3 OF 14 SHEETS



MATCH LINE - STA. 6+00.0 CONTINUED BELOW



MATCH LINE - STA. 6+00.0 CONTINUED ABOVE

MATCH LINE - STA. 12+00.0 CONTINUED ON SHEET 5

TECH 3 Consulting Group, Inc.
ENGINEERS SURVEYORS
 737 West Exchange St. Crete, IL 60417
 ph 708.672.6934 fax 708.672.3739

USER NAME =	DESIGNED BY = JGB	REVISED - 6/8/10 PER IDOT
PLOT SCALE =	DRAWN BY = JJF	REVISED - 6/28/10 PER IDOT
	CHECKED BY = RWM	REVISED - 7/7/10 PER IDOT
	DATE = 4/27/10	REVISED -

STATE OF ILLINOIS
DEPARTMENT OF TRANSPORTATION



Village of CRETE
 WILL COUNTY, ILLINOIS
OR EXTENSION THEREOF - 732, 805, 207 - Phone 708.645.4401

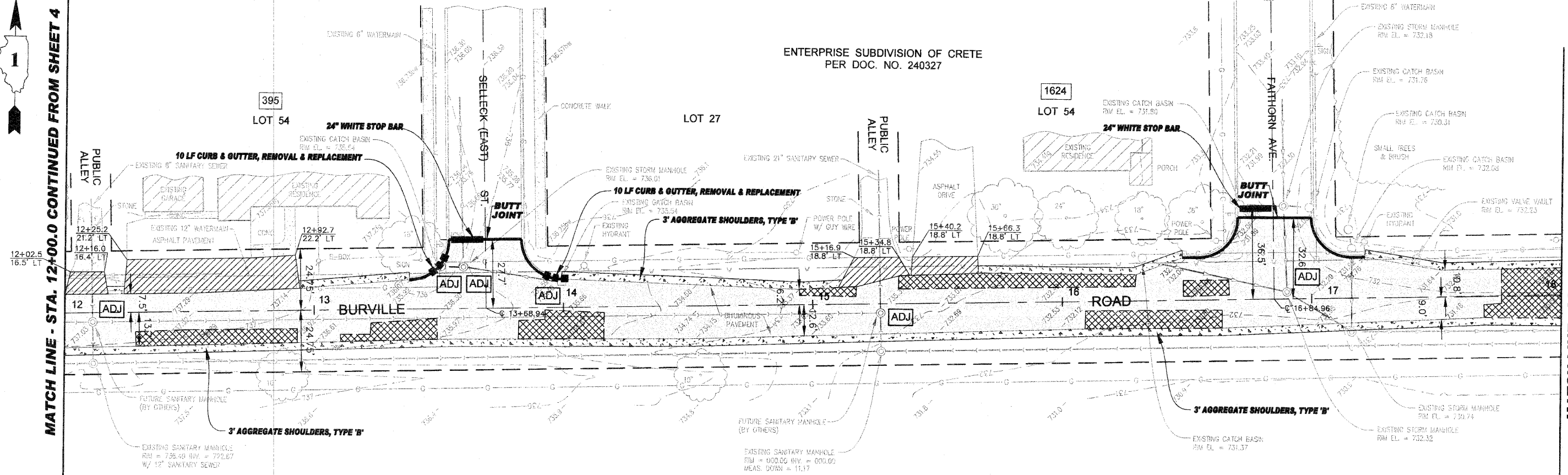
BURVILLE ROAD RESURFACING
SITE PLAN - STA. 1+33 TO 12+00

SCALE: 1" = 20' SHEET NO. 4 OF 14 SHEETS STA. - 1+33 TO - 12+00

FAU. RATE	SECTION	COUNTY	TOTAL SHEET	SHEET NO.
4305	10-00046-00-RS	WILL	14	4
FED. ROAD DIST. NO. 1		CONTRACT NO. 63490		
		FED. AID PROJECT		



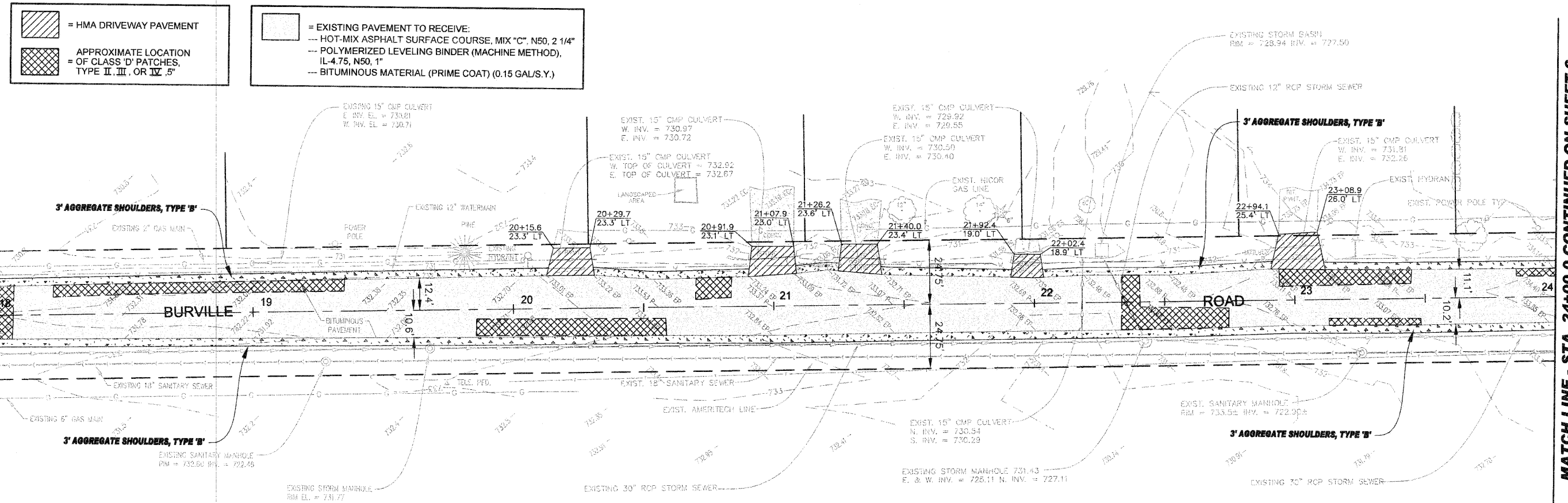
MATCH LINE - STA. 12+00.0 CONTINUED FROM SHEET 4



MATCH LINE - STA. 18+00.0 CONTINUED BELOW



MATCH LINE - STA. 18+00.0 CONTINUED ABOVE



MATCH LINE - STA. 24+00.0 CONTINUED ON SHEET 6

TECH 3 Consulting Group, Inc.
 ENGINEERS SURVEYORS
 737 West Exchange St., Crete, IL 60417
 PH 708.672.4904 FAX 708.672.3739
 ILLINOIS PROFESSIONAL DESIGN FIRM NO. 184-002335

USER NAME =
 PLOT SCALE =
 PLOT DATE =

DESIGNED BY = JSB
 DRAWN BY = JUF
 CHECKED BY = RWM
 DATE = 4/27/10

REVISED - 6/8/10 PER IDOT
 REVISED - 6/28/10 PER IDOT
 REVISED - 7/7/10 PER IDOT
 REVISED -

STATE OF ILLINOIS
 DEPARTMENT OF TRANSPORTATION

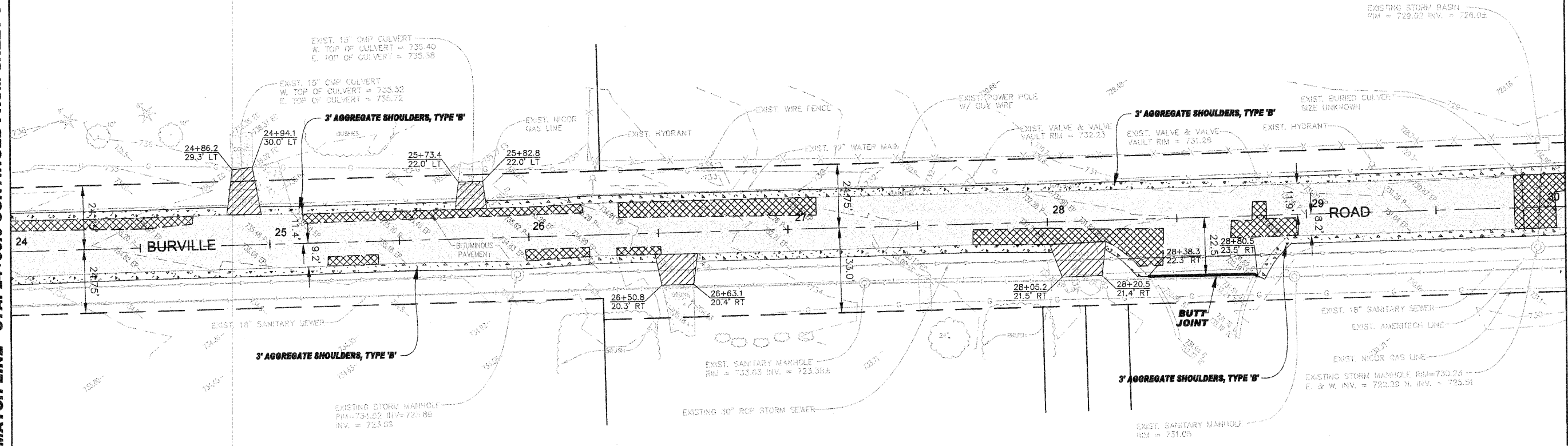
Village of CRETE
 WILL COUNTY, ILLINOIS
 BURVILLE ROAD RESURFACING
 SITE PLAN - STA. 12+00 TO 24+00

FALL RATE	SECTION	COUNTY	TOTAL SHEET	SHEET NO.
4305	10-00046-00-RS	WILL	14	5

CONTRACT NO. 63490
 FED. AID PROJ. NO.






MATCH LINE - STA. 24+00.0 CONTINUED FROM SHEET 5

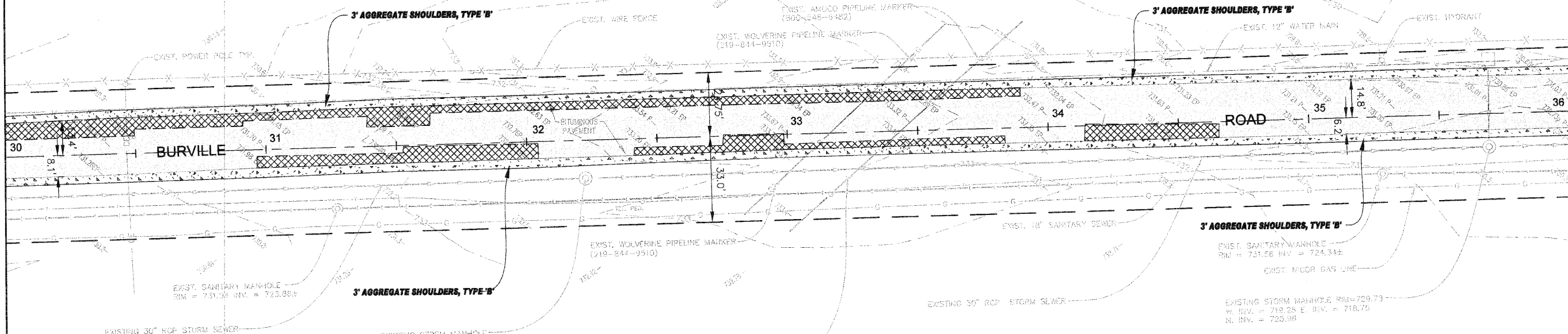


MATCH LINE - STA. 30+00.0 CONTINUED BELOW



MATCH LINE - STA. 30+00.0 CONTINUED ABOVE

-  = HMA DRIVEWAY PAVEMENT
-  = APPROXIMATE LOCATION OF CLASS 'D' PATCHES, TYPE II, III, OR IV, 5"
-  = EXISTING PAVEMENT TO RECEIVE:
 - HOT-MIX ASPHALT SURFACE COURSE, MIX "C", N50, 2 1/4"
 - POLYMERIZED LEVELING BINDER (MACHINE METHOD), IL-4.75, N50, 1"
 - BITUMINOUS MATERIAL (PRIME COAT) (0.15 GAL/S.Y.)



MATCH LINE - STA. 36+00.0 CONTINUED ON SHEET 7

TECH 3 Consulting Group, Inc.
 ENGINEERS SURVEYORS
 737 West Exchange St., Crete, IL 60417
 PH 708-672-6921 FAX 708-672-3339
 ILLINOIS PROFESSIONAL DESIGN FIRM NO. 184-022336

USER NAME =
 DESIGNED BY = JSB
 DRAWN BY = JJF
 CHECKED BY = RWM
 DATE = 4/27/10

REVISED - 6/8/10 PER IDOT
 REVISED - 6/28/10 PER IDOT
 REVISED - 7/7/10 PER IDOT
 REVISED -

STATE OF ILLINOIS
DEPARTMENT OF TRANSPORTATION



Village of CRETE
 WILL COUNTY, ILLINOIS
 204
 AN ORDINANCE FOR THE YEAR 2010

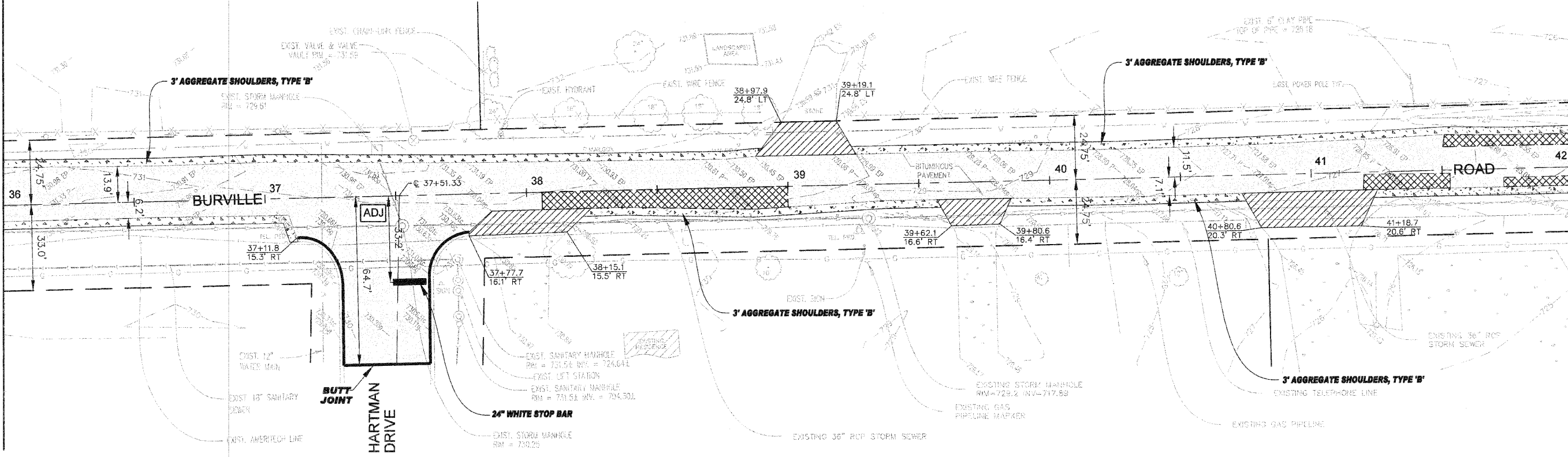
BURVILLE ROAD RESURFACING
SITE PLAN - STA. 24+00 TO 36+00

SCALE 1" = 20' SHEET NO. 6 OF 14 SHEETS STA. - 24+00 TO 36+00

FALL RITE	SECTION	COUNTY	TOTAL SHEET	SHEET NO.
4305	10-00046-00-RS	WILL	14	6
FED. ROAD DIST. NO. 1		CONTRACT NO. 63490		
		FED. AID PROJECT		






MATCH LINE - STA. 36+00.0 CONTINUED FROM SHEET 5

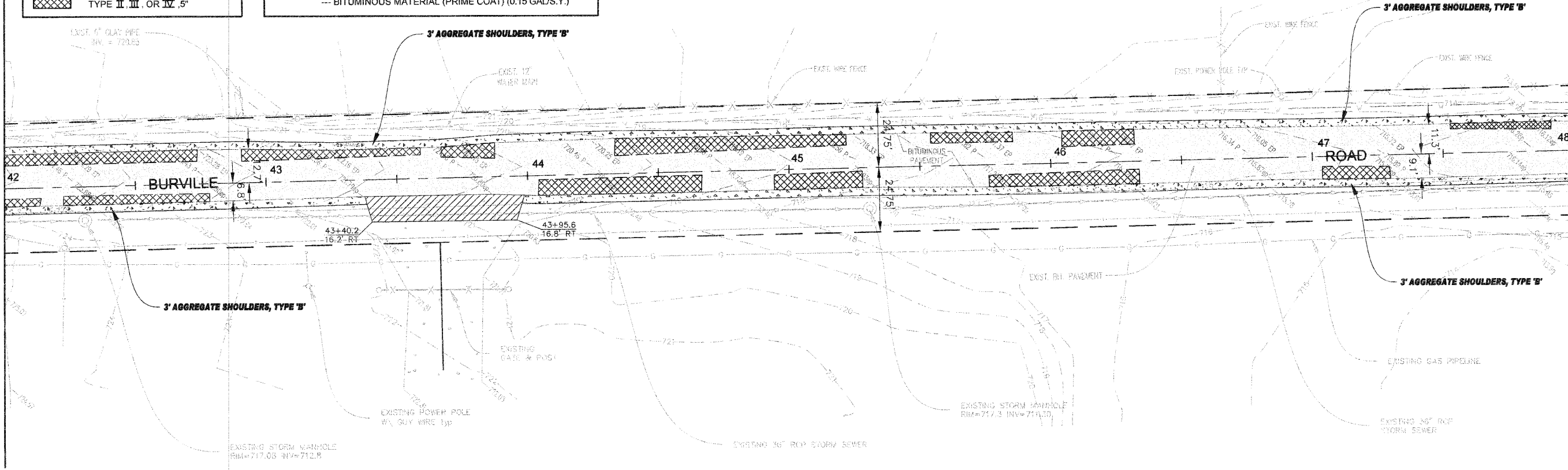


MATCH LINE - STA. 42+00.0 CONTINUED BELOW



MATCH LINE - STA. 42+00.0 CONTINUED ABOVE

-  = HMA DRIVEWAY PAVEMENT
-  = APPROXIMATE LOCATION OF CLASS 'D' PATCHES, TYPE II, III, OR IV, 5"
-  = EXISTING PAVEMENT TO RECEIVE:
 - HOT-MIX ASPHALT SURFACE COURSE, MIX "C", N50, 2 1/4"
 - POLYMERIZED LEVELING BINDER (MACHINE METHOD), IL-4.75, N50, 1"
 - BITUMINOUS MATERIAL (PRIME COAT) (0.15 GAL/S.Y.)



MATCH LINE - STA. 48+00.0 CONTINUED ON SHEET 8

TECH 3 Consulting Group, Inc.
 ENGINEERS SURVEYORS
 737 West Exchange St. Crete, IL 60417
 PH 708.672.4894 FAX 708.672.3735
 ILLINOIS PROFESSIONAL DESIGN FIRM NO. 194-022235

USER NAME =
 PLOT SCALE =
 PLOT DATE =

DESIGNED BY = JSB
 DRAWN BY = JJF
 CHECKED BY = RWM
 DATE = 4/27/10

REVISED - 6/8/10 PER IDOT
 REVISED - 6/28/10 PER IDOT
 REVISED - 7/7/10 PER IDOT
 REVISED -

STATE OF ILLINOIS
DEPARTMENT OF TRANSPORTATION



Village of CRETE
 WILL COUNTY, ILLINOIS
 100 N. WASHINGTON STREET - P.O. BOX 107 - CRETE, ILLINOIS 60435

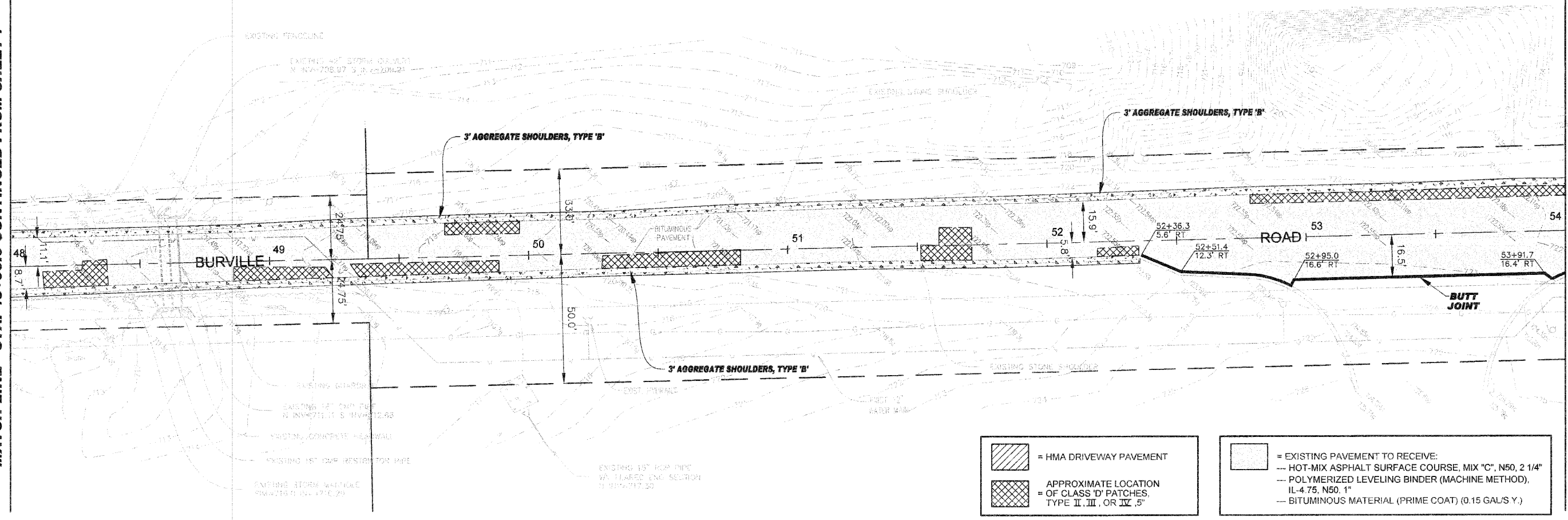
BURVILLE ROAD RESURFACING
SITE PLAN - STA. 36+00 TO 48+00

SCALE: 1" = 20'
 SHEET NO. 7 OF 14 SHEETS
 STA. - 36+00 TO 48+00

FED. AID DIST. NO. 1	SECTION 10-00046-00-RS	COUNTY WILL	TOTAL SHEET 14	SHEET NO. 7
CONTRACT NO. 63490		FED. AID PROJECT		



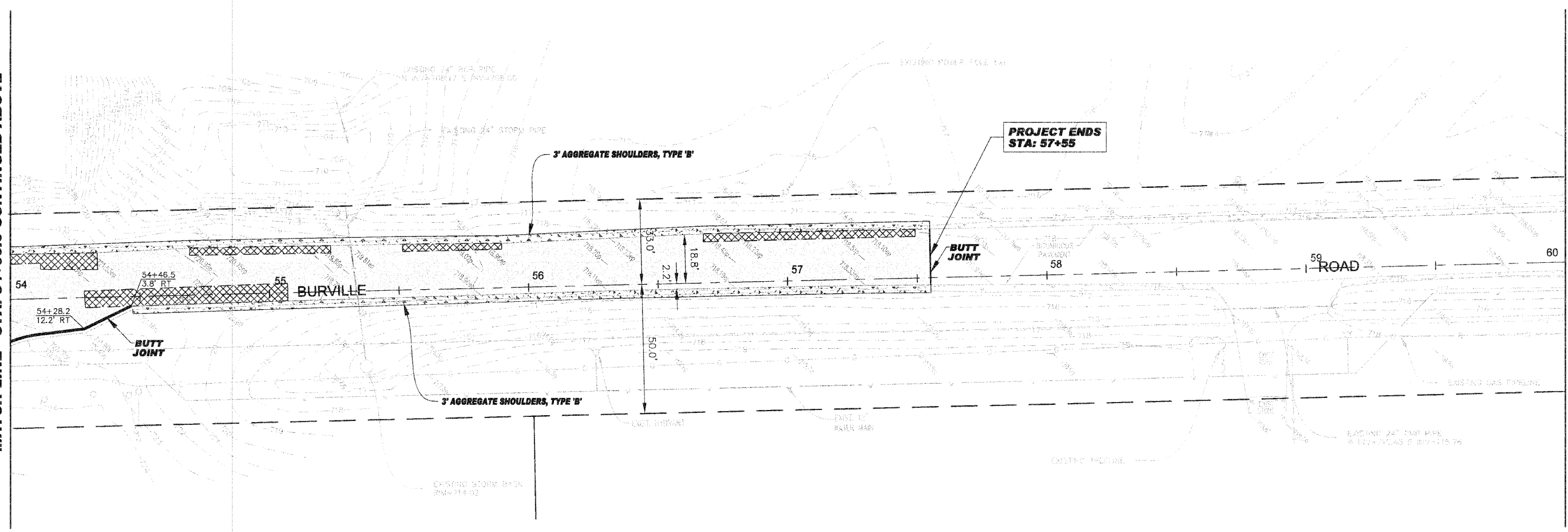
MATCH LINE - STA. 48+00.0 CONTINUED FROM SHEET 7



MATCH LINE - STA. 54+00.0 CONTINUED BELOW



MATCH LINE - STA. 54+00.0 CONTINUED ABOVE



STA. 60+00.0

TECH 3 Consulting Group, Inc.
ENGINEERS SURVEYORS
737 West Exchange St. Crete, IL 60417
ph 708 872 6864 fax 708 872 3739
ILLINOIS PROFESSIONAL DESIGN FIRM NO. 184-002235

USER NAME =
DESIGNED BY = JSB
DRAWN BY = JJF
CHECKED BY = RWM
DATE = 4/27/10
PLOT SCALE =
PLOT DATE =

REVISED - 6/8/10 PER IDOT
REVISED - 6/28/10 PER IDOT
REVISED - 7/7/10 PER IDOT
REVISED -

STATE OF ILLINOIS
DEPARTMENT OF TRANSPORTATION

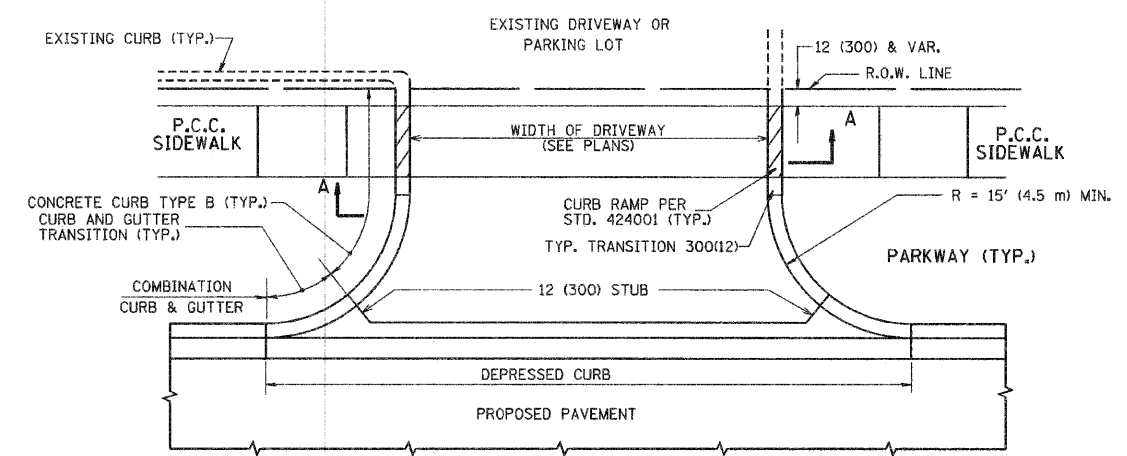
Village of CRETE
WILL COUNTY, ILLINOIS
BURVILLE ROAD RESURFACING
SITE PLAN - STA. 48+00 TO 57+55 END

SCALE: 1" = 20'
SHEET NO. 8 OF 14 SHEETS
STA. - 48+00 TO 57+55

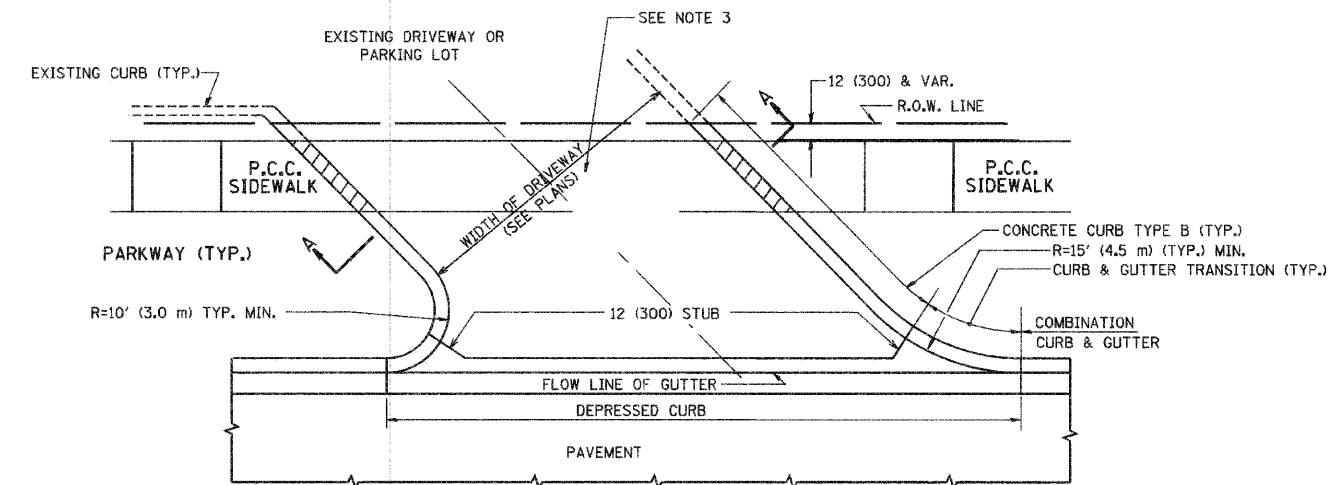
FAU RTE. 4305
SECTION 10-00046-00-RS
COUNTY WILL
TOTAL SHEET 14
SHEET NO. 8
CONTRACT NO. 63490
FED. ROAD DIST. NO. 1
FED. AID PROJECT

FAU RTE. 4305
SECTION 10-00046-00-RS
COUNTY WILL
TOTAL SHEET 14
SHEET NO. 8
CONTRACT NO. 63490
FED. ROAD DIST. NO. 1
FED. AID PROJECT

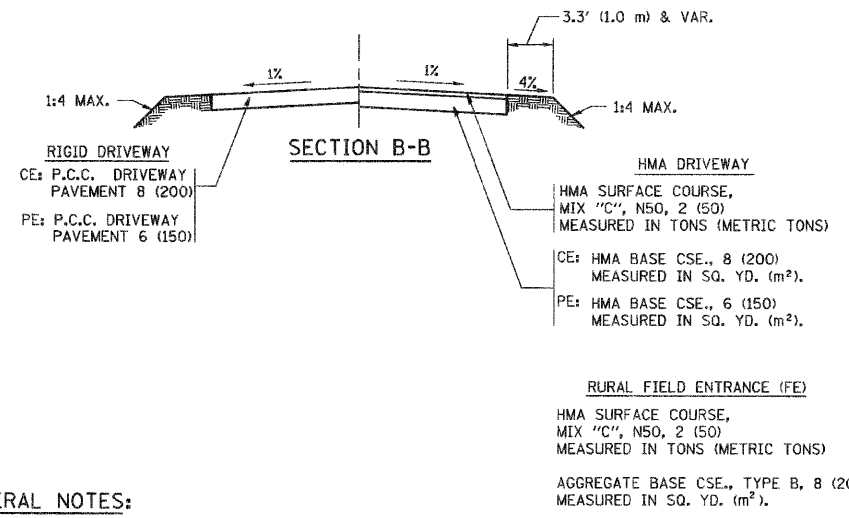
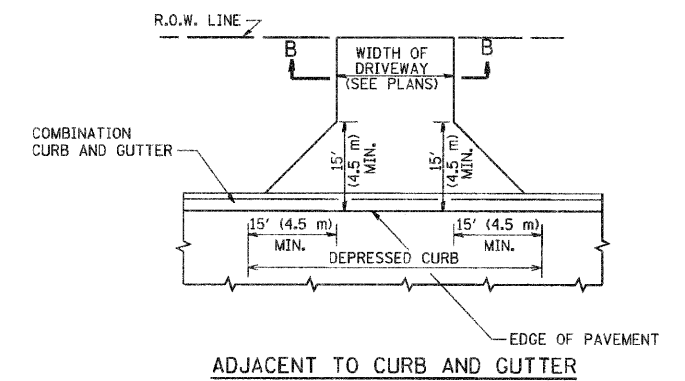
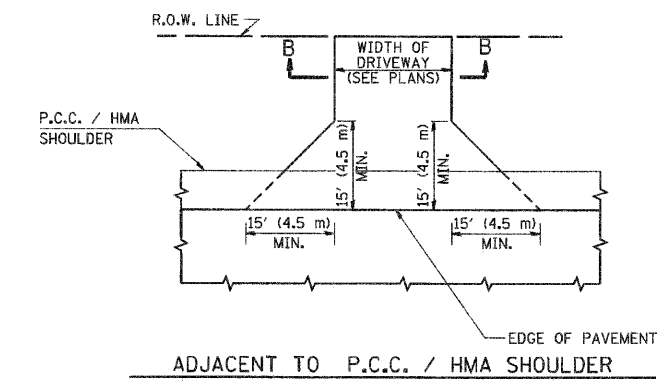
F.A.U. RTE.	SECTION	COUNTY	TOTAL SHEETS	SHEET NO.
4305	10-00046-00-RS	WILL	14	9
STA.		TO STA.		
FED. ROAD DIST. NO. 1		ILLINOIS FED. AID PROJECT		



WITH CONCRETE CURB, TYPE B



WITH CONCRETE CURB, TYPE B



GENERAL NOTES:

DRIVEWAY SLOPES, LOCATIONS, & GEOMETRIC LAYOUT SHALL BE IN ACCORDANCE WITH THE LATEST EDITION OF THE "HANDBOOK FOR POLICY ON PERMITS FOR ACCESS DRIVEWAYS TO STATE HIGHWAYS". FOR FURTHER LAYOUT REQUIREMENTS, REFER TO ILLUSTRATIONS IN THE PERMIT HANDBOOK. DRIVEWAYS SHALL BE REPLACED IN KIND, UNLESS OTHERWISE NOTED ON THE PLANS.

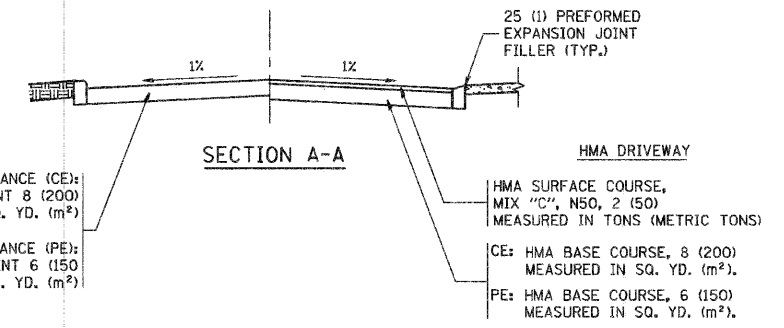
COMMERCIAL DRIVEWAYS SHALL BE CONSTRUCTED WITH CONCRETE CURB, TYPE B RETURNS EXCEPT WHEN THE SIDEWALK EDGE IS 4 FEET (1.2 METERS) OR LESS FROM THE BACK OF CURB, CONSTRUCT A FLARE DRIVEWAY WITHOUT CURB.

THE RESIDENT ENGINEER SHALL CONTACT THE TRAFFIC PERMIT OFFICE AT 847/ 705-4131 FOR ANY QUESTIONS ON DRIVEWAYS SHOWN IN THE PLANS; SPECIFICALLY IN REFERENCE TO ADDITIONAL AND/OR RELOCATION/REMOVAL OF A DRIVEWAY.

COMBINATION CONCRETE CURB & GUTTER SHALL BE MEASURED STRAIGHT ACROSS THE DRIVEWAY. NO ADDITIONAL COMPENSATION WILL BE ALLOWED FOR THE CURB & GUTTER TRANSITION.

1 (25) PREFORMED EXPANSION JOINT FILLER WILL NOT BE PAID SEPARATELY, BUT SHALL BE CONSIDERED INCLUDED IN THE COST OF THE P.C.C. DRIVEWAY PAVEMENT OR P.C.C. SIDEWALK.

WHEN THE P.C.C. SIDEWALK EXTENDS THROUGH THE DRIVEWAY, THE THICKNESS OF THE SIDEWALK IN THE DRIVEWAY AREA SHALL BE THE SAME AS THE DRIVEWAY THICKNESS. SIDEWALK WILL BE PAID FOR AS P.C.C. SIDEWALK OF THE THICKNESS SPECIFIED. SIDEWALK CROSS SLOPE THRU DRIVEWAY AREA TO BE A MAXIMUM OF 1:50.



ALL DIMENSIONS ARE IN INCHES (MILLIMETERS) UNLESS OTHERWISE NOTED

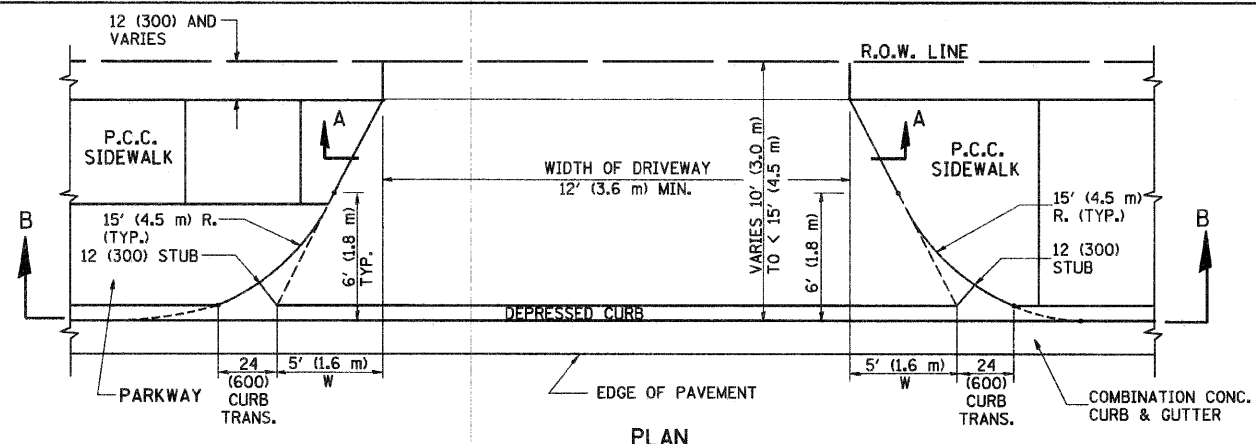
ILLINOIS DEPARTMENT OF TRANSPORTATION
DRIVEWAY DETAILS
DISTANCE BETWEEN R.O.W. AND FACE OF CURB & EDGE OF SHOULDER >= 15' (4.5 m)

REVISIONS	
NAME	DATE
R. SHAH	11-04-95
J. POLLASTRINI	08-12-96
J. POLLASTRINI	12-14-96
A. ABBAS	03-21-97
T. HOLTZ	04-08-97
M. GOMEZ	04-06-01
P. LOFLEUR	04-15-03
R. BORO	01-01-07
R. BORO	06-11-08

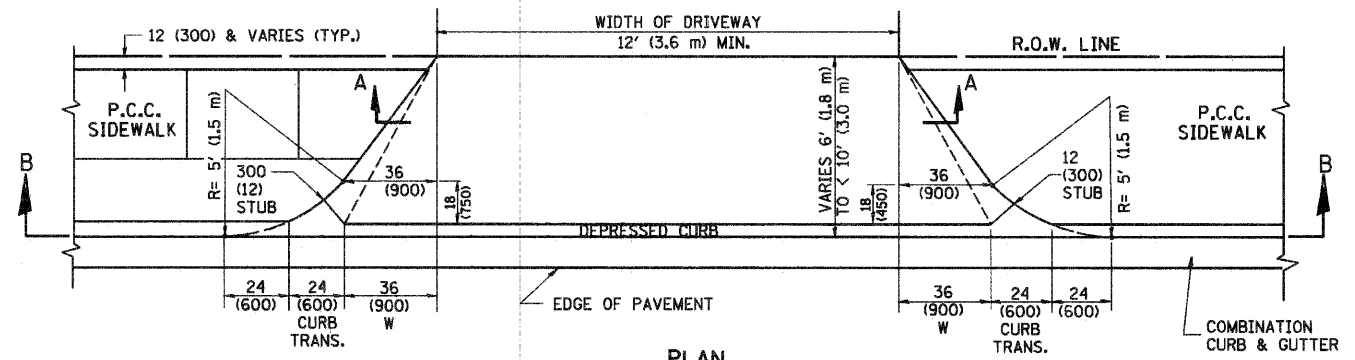
SCALE: VERT. NONE
HORIZ. DRAWN BY
CHECKED BY

PLOT DATE = 6/12/2008
PLOT SCALE = 48.0000 / IN
USER NAME = baurnd

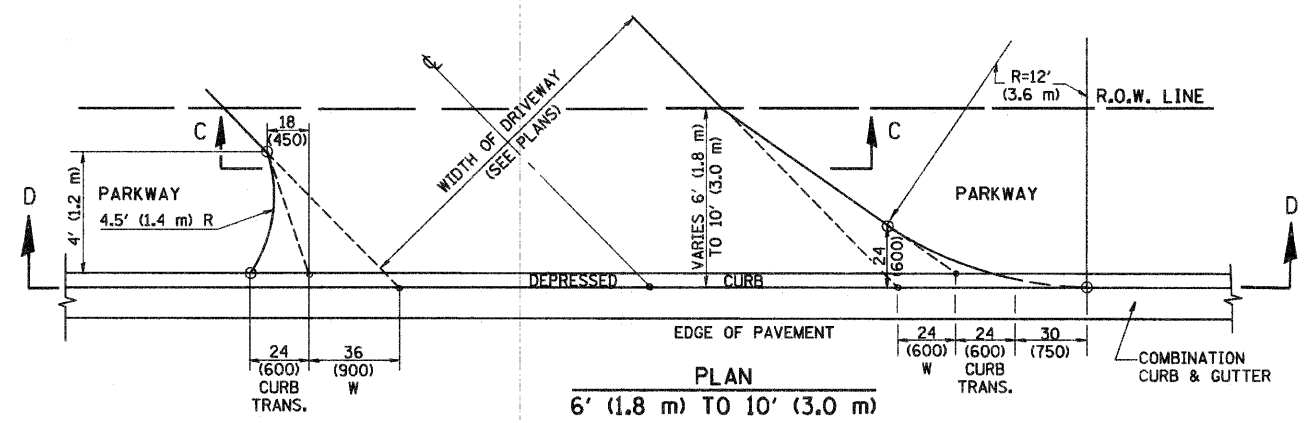
F.A.U. RTE.	SECTION	COUNTY	TOTAL SHEETS	SHEET NO.
4305	10-00046-00-RS	WILL	14	10
STA.		TO STA.		
FED. ROAD DIST. NO. 1		ILLINOIS FED. AID PROJECT		



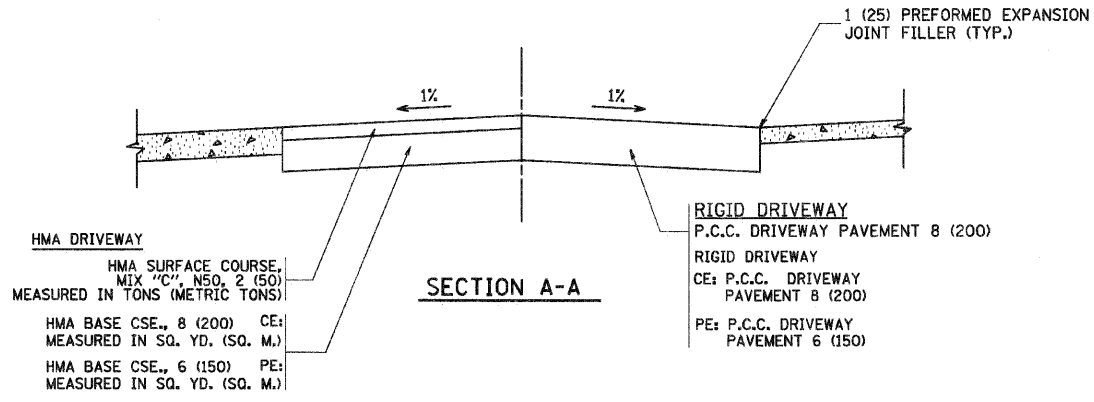
PLAN
10' (3.0 m) TO < 15' (4.5 m)



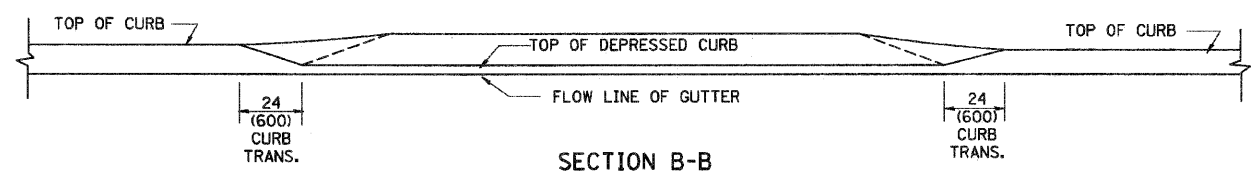
PLAN
6' (1.8 m) TO < 10' (3.0 m)



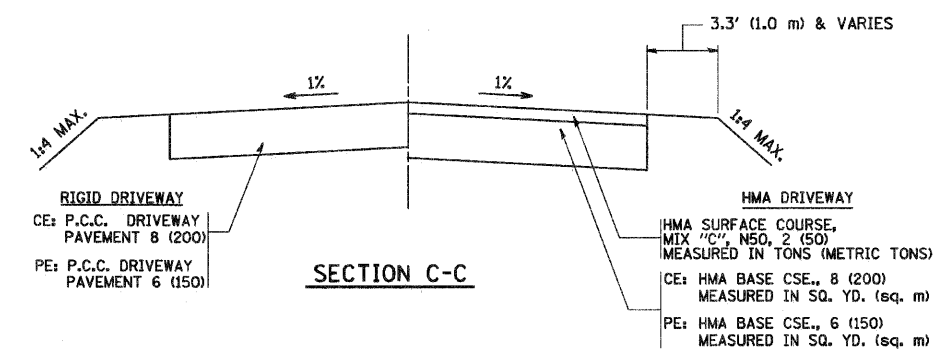
PLAN
6' (1.8 m) TO 10' (3.0 m)



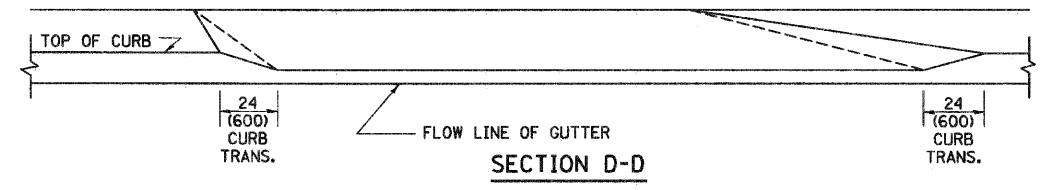
SECTION A-A



SECTION B-B



SECTION C-C



SECTION D-D

GENERAL NOTES

DRIVEWAY SLOPES, LOCATIONS, & GEOMETRIC LAYOUT SHALL BE IN ACCORDANCE WITH THE LATEST EDITION OF THE "HANDBOOK FOR POLICY ON PERMITS FOR ACCESS DRIVEWAYS TO STATE HIGHWAYS". FOR FURTHER LAYOUT REQUIREMENTS, REFER TO ILLUSTRATION 10 IN THE PERMIT HANDBOOK. WHERE SIDEWALKS EXIST, DRIVEWAYS SHALL BE REPLACED WITH RIGID PAVEMENT. WHERE NO SIDEWALKS EXIST, DRIVEWAYS SHALL BE REPLACED IN KIND. SIDEWALK CROSS SLOPE THRU DRIVEWAY AREA TO BE A MAXIMUM OF 1:50.

WHEN THE DISTANCE BETWEEN R.O.W. AND THE BACK OF CURB IS EQUAL TO OR LESS THAN 8' (2.4 m), THE P.C.C. SIDEWALK SHALL EXTEND TO THE BACK OF CURB.

THE RESIDENT ENGINEER SHALL CONTACT THE TRAFFIC PERMIT OFFICE AT 847/705-4131 FOR ANY QUESTIONS ON DRIVEWAYS SHOWN IN THE PLANS; SPECIFICALLY IN REFERENCE TO ADDITIONAL AND/OR RELOCATION/REMOVAL OF A DRIVEWAY.

COMBINATION CONCRETE CURB & GUTTER SHALL BE MEASURED STRAIGHT ACROSS THE DRIVEWAY. NO ADDITIONAL COMPENSATION WILL BE ALLOWED FOR THE CURB & GUTTER TRANSITION.

THE 1 (25) PREFORMED EXPANSION JOINT FILLER WILL NOT BE PAID SEPARATELY, BUT SHALL BE CONSIDERED INCLUDED IN THE COST OF THE P.C.C. DRIVEWAY PAVEMENT OR P.C.C. SIDEWALK.

"W" VARIES FROM 36 (900) TO 5' (1.5 m) PROPORTIONAL TO THE LENGTH (L), FROM 6' (1.8 m) TO 10' (3 m).

ALL DIMENSIONS ARE IN INCHES (MILLIMETERS) UNLESS OTHERWISE NOTED.

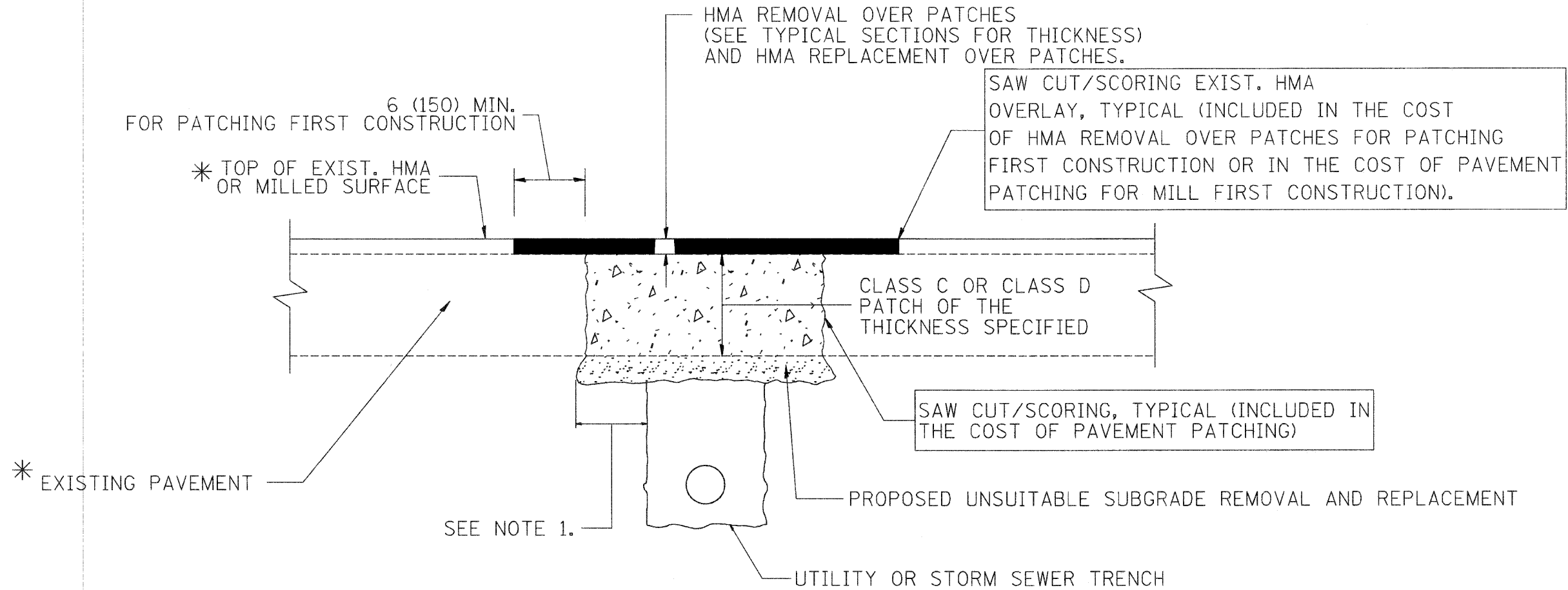
ILLINOIS DEPARTMENT OF TRANSPORTATION
DRIVEWAY DETAILS
DISTANCE BETWEEN ROW AND FACE OF CURB < 15' (4.5 m)

REVISIONS	
NAME	DATE
R. SHAH	11/06/95
J. POLLASTRINI	08/12/96
J. POLLASTRINI	12/14/96
A. ABBAS	03/21/97
T. HOLTZ	04/08/97
M. GOMEZ	04/06/01
P. LAFLEUR	04/15/03
R. BORO	01/01/07

SCALE: VERT. NONE
HORIZ. NONE
DRAWN BY
CHECKED BY

PLOT DATE = 3/5/2007
PLOT SCALE = 6000000 / 1
USER NAME = bnaand

F.A.U. RTE.	SECTION	COUNTY	TOTAL SHEETS	SHEET NO.
4305	10-00046-00-RS	WILL	14	11
STA.		TO STA.		
FED. ROAD DIST. NO. 1		ILLINOIS FED. AID PROJECT		



* SEE TYPICAL SECTIONS FOR THICKNESS AND MATERIALS

NOTES:

1. THE WIDTH OF THE FULL DEPTH PATCH OVER A TRENCH SHALL BE 12 (300) WIDER ON EACH SIDE OF THE TRENCH.
2. FOR METHOD OF MEASUREMENT AND BASIS OF PAYMENT, SEE RECURRING SPECIAL PROVISION "PATCHING WITH HOT-MIX ASPHALT OVERLAY REMOVAL".

SEQUENCE OF CONSTRUCTION (PATCHING FIRST)

1. REMOVE THE EXISTING HMA MATERIAL OVER THE AREA TO BE PATCHED.
2. REMOVE AND REPLACE WITH CLASS C OR D PATCH.
3. REPLACE HMA MATERIAL OVER THE AREA TO BE PATCHED.

SEQUENCE OF CONSTRUCTION (MILLING FIRST)

1. MILL HMA FIRST IF THERE IS AT LEAST 4 1/2 INCHES OR MORE OF HMA MATERIAL ON TOP OF THE EXISTING PAVEMENT OR IF THE PAVEMENT IS FULL DEPTH HMA. A MINIMUM OF 2 INCHES OF HMA MATERIAL SHALL BE IN PLACE AFTER MILLING.
2. REMOVE AND REPLACE WITH FULL DEPTH CLASS D PATCHES TO TOP OF MILLED SURFACE.

ALL DIMENSIONS ARE IN INCHES (MILLIMETERS) UNLESS OTHERWISE SHOWN.

REVISIONS	
NAME	DATE
R. SHAH	01/14/95
R. SHAH	03/23/95
R. SHAH	04/24/95
A. HOUSEH	03/15/96
A. ABBAS	03/21/97
A. ABBAS	01/20/98
ART ABBAS	04/27/98
R. BORO	01/01/07
R. BORO	09/04/07
K. ENG	10/27/08

ILLINOIS DEPARTMENT OF TRANSPORTATION

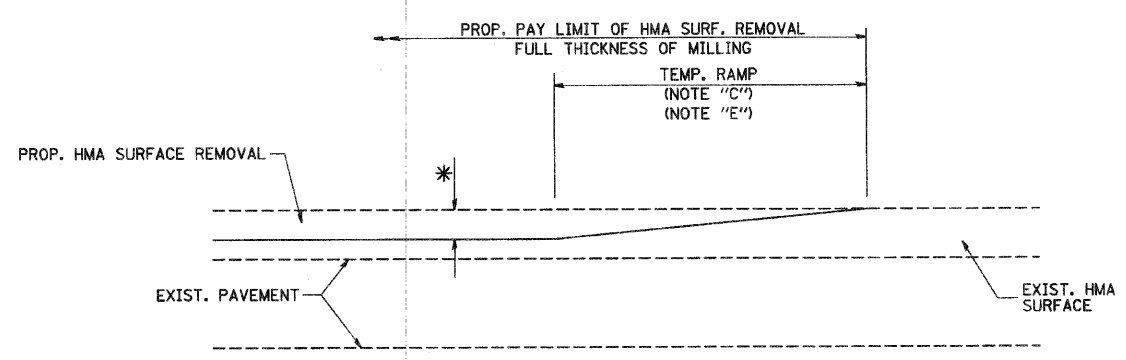
PAVEMENT PATCHING FOR HMA SURFACED PAVEMENT

SCALE: VERT. NONE
HORIZ.

DRAWN BY

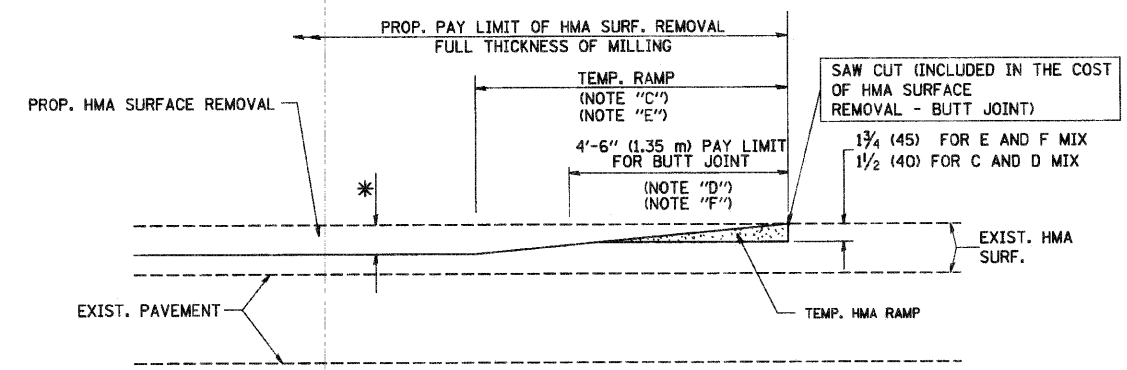
CHECKED BY

BD400-04 (BD-22)



MILLED TEMPORARY RAMP
(FOR BUTT JOINT AND HMA TAPER SEE DETAIL BELOW)

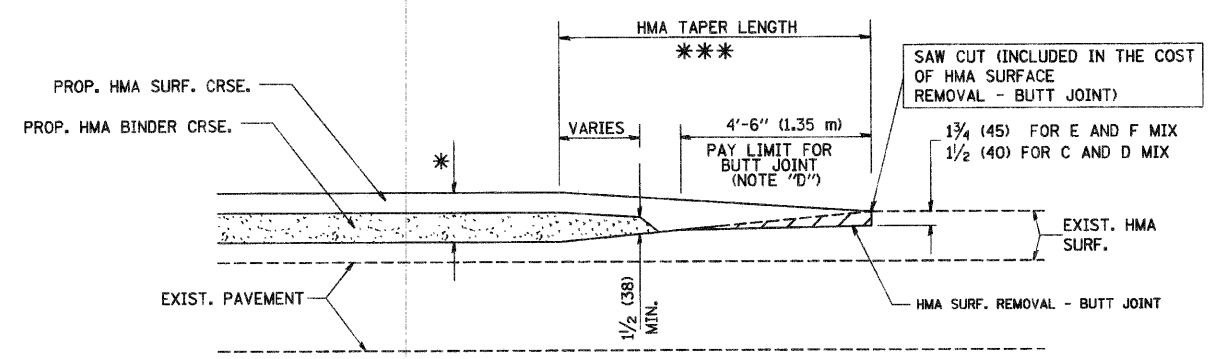
OPTION 1



HMA CONSTRUCTED TEMPORARY RAMP
(FOR BUTT JOINT AND HMA TAPER SEE DETAIL BELOW)

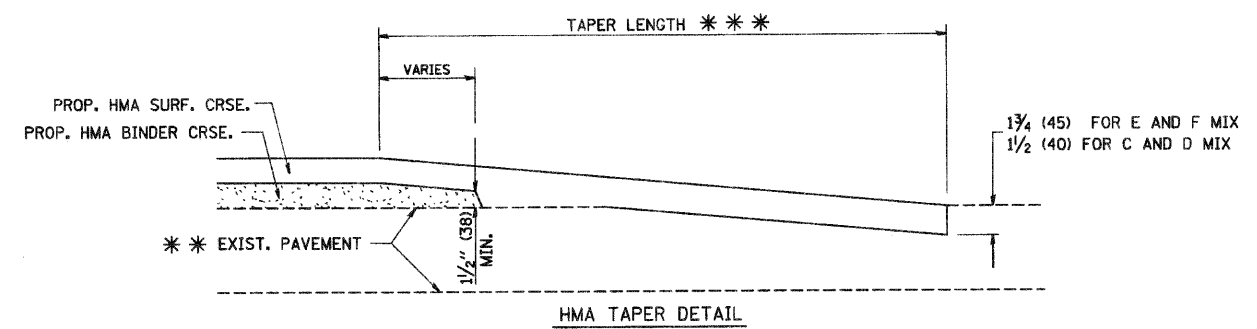
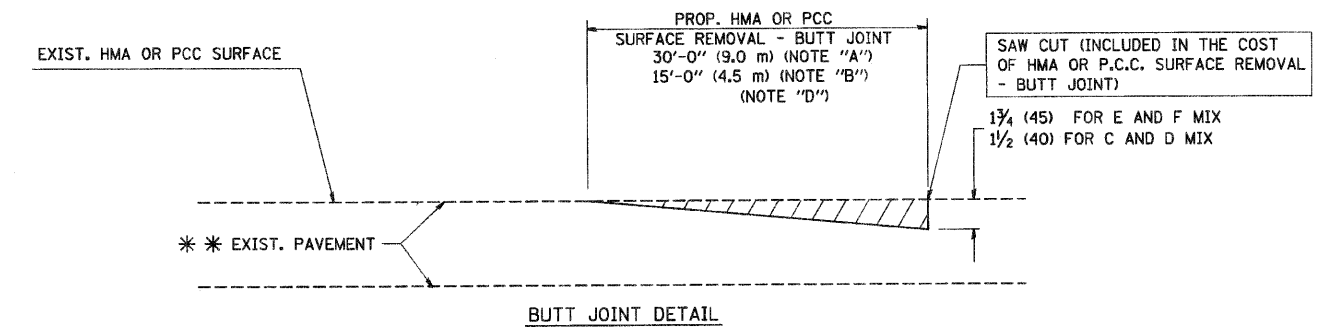
OPTION 2

TYPICAL TEMPORARY RAMP



BUTT JOINT AND HMA TAPER

TYPICAL BUTT JOINT AND HMA TAPER FOR MILLING AND RESURFACING



TYPICAL BUTT JOINT AND HMA TAPER FOR RESURFACING ONLY

*** PC CONCRETE, HMA OR HMA RESURFACED PAVEMENT.

NOTES

- A: MAINLINE ROADWAYS AND MAJOR SIDE ROADS.
- B: MINOR SIDE ROADS.
- C: THE TEMP. RAMP SHALL BE CONSTRUCTED IMMEDIATELY UPON REMOVAL OF THE EXISTING HMA SURFACE.
- D: THE BUTT JOINT SHALL BE CONSTRUCTED IMMEDIATELY PRIOR TO PLACING THE PROPOSED HMA COURSES.
- E: TAPER THE TEMP. RAMP AT A RATE OF 3'-0" (900 mm) PER 1 INCH (25 mm) OF MILLING THICKNESS.
- F: INSTALLATION AND REMOVAL OF THE 4'-6" (1.35 m) TEMP. RAMP IS INCLUDED IN COST OF HMA SURFACE REMOVAL - BUTT JOINT
- G: SEE ARTICLE 406.08 AND 406.14 OF THE STANDARD SPECIFICATIONS FOR "HMA AND/OR PCC SURFACE REMOVAL, BUTT JOINT".
- *** SEE TYPICAL SECTIONS FOR MILLING THICKNESS.
- *** 20'-0" (6.1 m) PER 1 (25) RESURFACING (NOTE "A")
10'-0" (3.0 m) PER 1 (25) RESURFACING (NOTE "B")

ALL DIMENSIONS ARE IN INCHES (MILLIMETERS) UNLESS OTHERWISE SHOWN.

BASIS OF PAYMENT:

THE BUTT JOINT WILL BE PAID FOR AT THE CONTRACT UNIT PRICE PER SQUARE YARD (SQURE METER) FOR "HOT-MIX ASPHALT SURFACE REMOVAL - BUTT JOINT" OR FOR "PORTLAND CEMENT CONCRETE SURFACE REMOVAL - BUTT JOINT".

REVISIONS	
NAME	DATE
M. DE YONG	6-13-90
M. DE YONG	7-3-90
M. DE YONG	3-27-92
R. SHAH	09/09/94
R. SHAH	10/25/94
A. ABBAS	03/21/97
M. GOMEZ	04/06/01
R. BORO	01/01/07

ILLINOIS DEPARTMENT OF TRANSPORTATION

BUTT JOINT AND HMA TAPER DETAILS

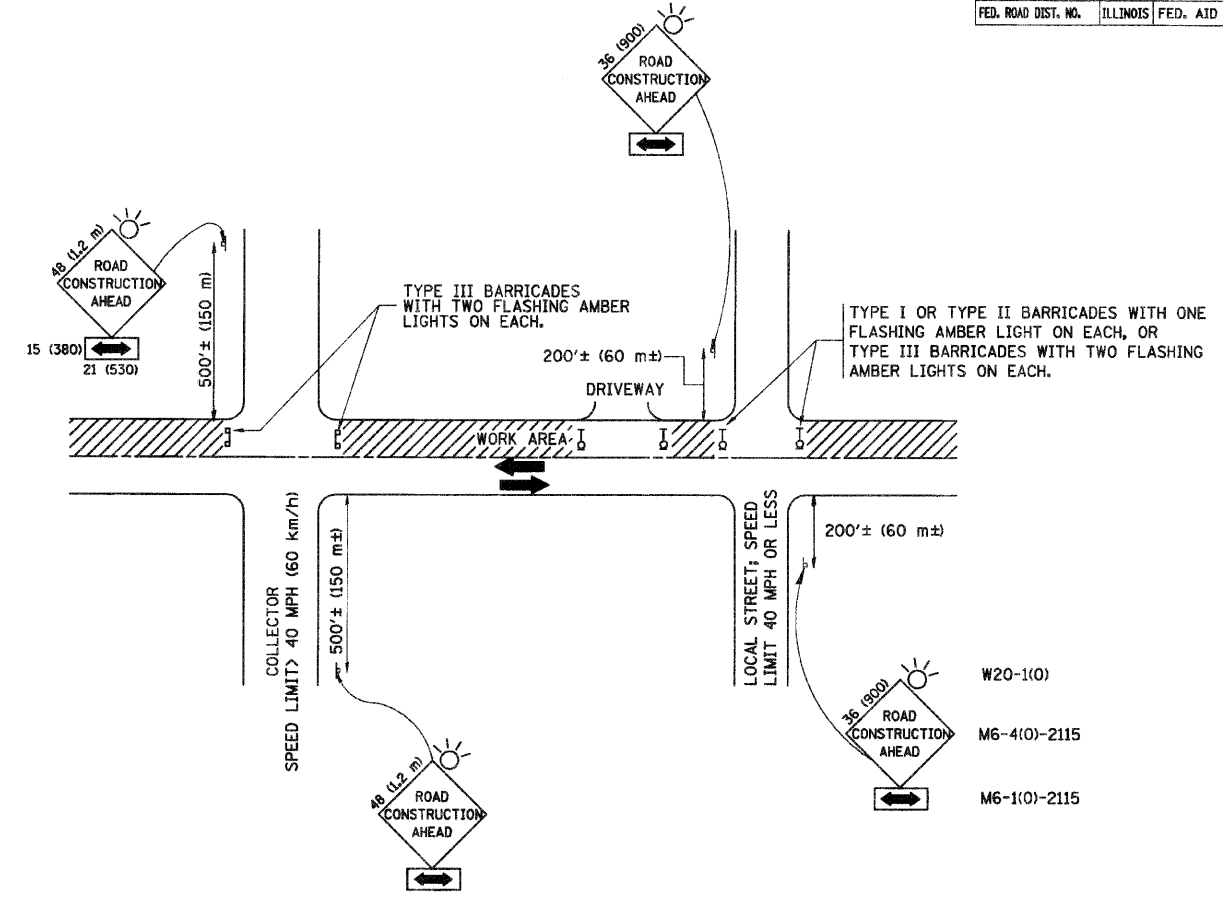
SCALE: VERT. NONE
HORIZ.

DRAWN BY

CHECKED BY

BD400-05 (VI-BD32)

F.A.U. RTE.	SECTION	COUNTY	TOTAL SHEETS	SHEET NO.
4305	10-00046-00-RS	WILL	14	13
STA.		TO STA.		
FED. ROAD DIST. NO.		ILLINOIS FED. AID PROJECT		



TRAFFIC CONTROL AND PROTECTION FOR SIDE ROADS, INTERSECTIONS, AND DRIVEWAYS

NOTES:

- A. FOR NO LANE RESTRICTION ON THE SIDE ROAD OR DRIVEWAYS**
- SIDE ROAD WITH A SPEED LIMIT OF 40 MPH (60 km/h) OR LESS AS SHOWN ON THE DRAWING AND AS DIRECTED BY THE ENGINEER:
 - a) ONE ROAD CONSTRUCTION AHEAD SIGN 36 x 36 (900x900) WITH A FLASHER AND FLAG MOUNTED ON IT APPROXIMATELY 200' (60 m) IN ADVANCE OF THE MAIN ROUTE.
 - b) THE CLOSED PORTION OF THE MAIN ROUTE SHALL BE PROTECTED BY BLOCKING WITH TYPE I, TYPE II OR TYPE III BARRICADES, 1/3 OF THE CROSS SECTION OF THE CLOSED PORTION.
 - SIDE ROAD WITH A SPEED LIMIT GREATER THAN 40 MPH (60 km/h) AS SHOWN ON THE DRAWING AND AS DIRECTED BY THE ENGINEER:
 - a) ONE ROAD CONSTRUCTION AHEAD SIGN 48 x 48 (1.2 m x 1.2 m) WITH A FLASHER MOUNTED ON IT APPROXIMATELY 500' (150 m) IN ADVANCE OF THE MAIN ROUTE.
 - b) THE CLOSED PORTION OF THE MAIN ROUTE SHALL BE PROTECTED BY BLOCKING WITH TYPE III BARRICADES, 1/2 OF THE CROSS SECTION OF THE CLOSED PORTION.
 - WHEN THE SIDE ROAD LIES BETWEEN THE BEGINNING OF THE MAINLINE SIGNING AND THE WORK ZONE, A SINGLE HEADED ARROW (M6-1) SHALL BE USED IN LIEU OF THE DOUBLE HEADED ARROW (M6-4).
- B. FOR A LANE CLOSURE ON A SIDE ROAD OR DRIVEWAY:**
- USE APPLICABLE PORTIONS OF THE TYPICAL APPLICATION OF TRAFFIC CONTROL DEVICES (STD. 701501, STD. 701606 OR THE APPROPRIATE STANDARD). THE SPACING OF SIGNS AND BARRICADES SHALL BE ADJUSTED FOR FIELD CONDITIONS AS DIRECTED BY THE ENGINEER. THE DIRECTIONAL ARROW SHALL BE COVERED OR REMOVED WHEN NO LONGER CONSISTENT WITH THE SIDE ROAD LANE CLOSURE.
- C. ADVANCE WARNING SIGNS ARE TO BE OMITTED ON DRIVEWAY UNLESS OTHERWISE NOTED.**
- D. THE TRAFFIC CONTROL AND PROTECTION FOR SIDE ROADS, INTERSECTIONS, AND DRIVEWAYS SHALL BE INCIDENTAL TO THE COST OF SPECIFIED TRAFFIC CONTROL STANDARDS OR ITEMS.**

All dimensions are in millimeters (inches) unless otherwise shown.

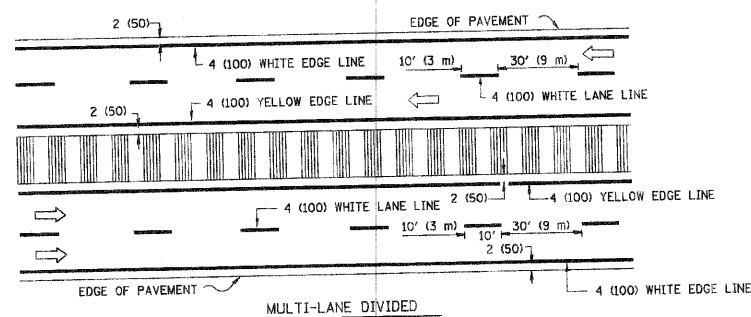
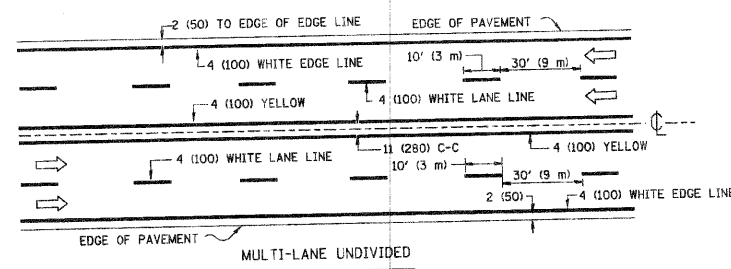
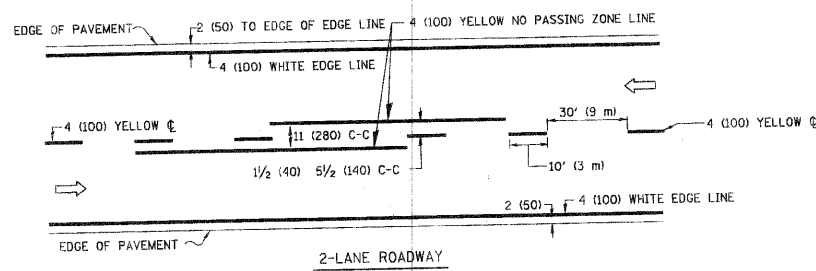
REVISIONS	
NAME	DATE
LHA	6/79
T. RAMMACHER	09/08/94
J. OBERLE	10/18/95
A. HOUSEH	03/06/96
A. HOUSEH	10/15/96
T. RAMMACHER	01/06/00

ILLINOIS DEPARTMENT OF TRANSPORTATION
TRAFFIC CONTROL AND PROTECTION FOR SIDE ROADS, INTERSECTIONS, AND DRIVEWAYS

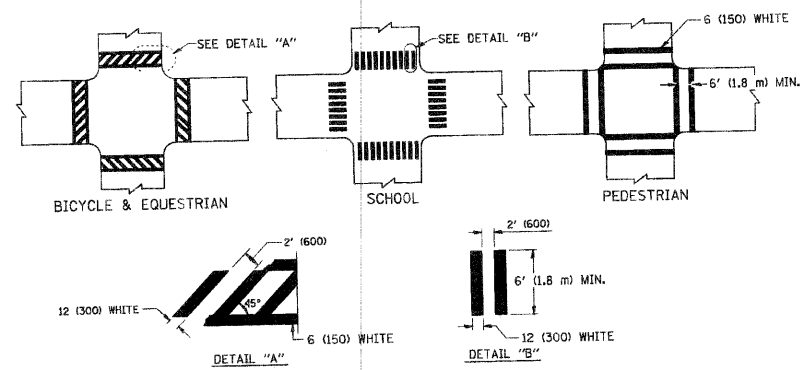
SCALE: NONE
 DRAWN BY
 CHECKED BY
 TC-10

PLOT DATE = 3/6/2007
 PLOT SCALE = 1/8" = 1'-0"
 USER NAME = bawandl

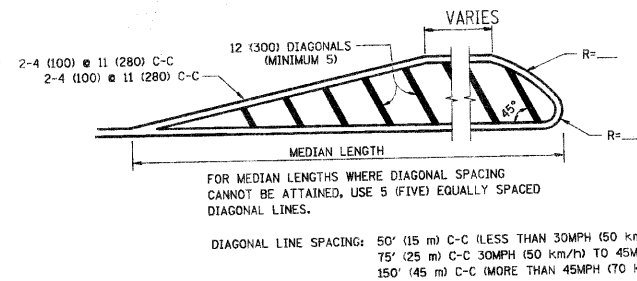
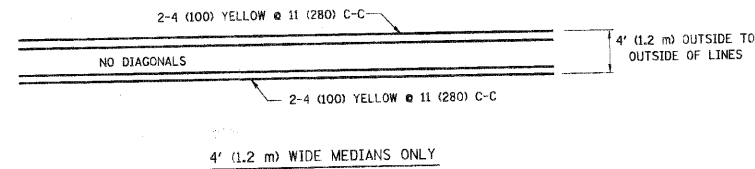
F.A.U. RTE.	SECTION	COUNTY	TOTAL SHEETS	SHEET NO.
4305	10-00046-00-RS	WILL	14	14
STA.		TO STA.		
FED. ROAD DIST. NO.		ILLINOIS FED. AID PROJECT		



TYPICAL LANE AND EDGE LINE MARKING
NOTE: MEDIANS WITH BARRIER CURB DO NOT REQUIRE AN EDGE LINE

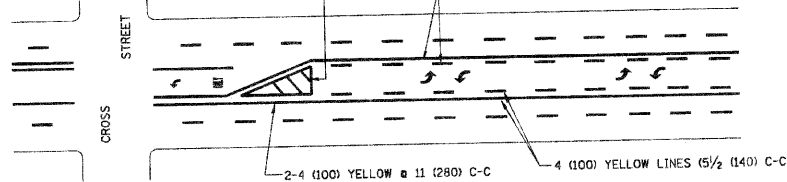


TYPICAL CROSSWALK MARKING



DIAGONAL LINE SPACING: 50' (15 m) C-C (LESS THAN 30MPH (50 km/h))
75' (25 m) C-C (30MPH (50 km/h) TO 45MPH (70 km/h))
150' (45 m) C-C (MORE THAN 45MPH (70 km/h))

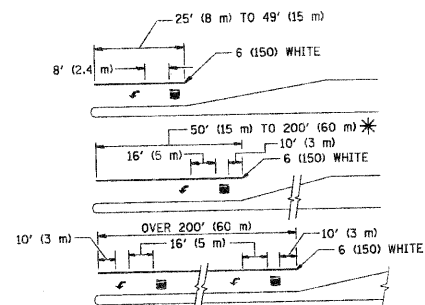
MEDIANS OVER 4' (1.2 m) WIDE



A MINIMUM OF TWO PAIRS OF TURN ARROWS SHALL BE USED, WHITE IN COLOR. ADDITIONAL PAIRS SHALL BE PLACED AT 200' (60 m) TO 300' (90 m) INTERVALS.

MEDIAN WITH TWO-WAY LEFT TURN LANE

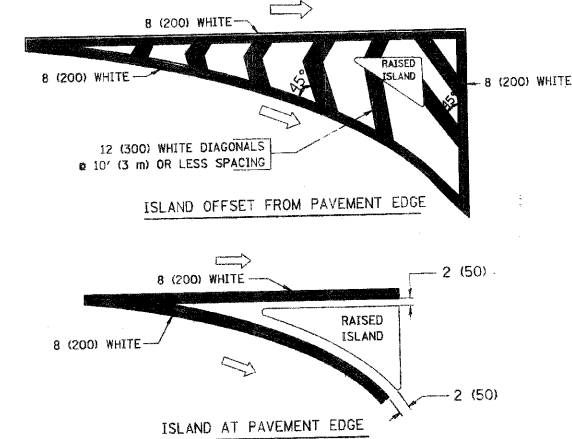
TYPICAL PAINTED MEDIAN MARKING



FULL SIZE LETTERS 8' (2.4 m) AND ARROWS SHALL BE USED.
AREA = 15.6 SQ. FT. (1.5 m²) AREA = 20.8 SQ. FT. (1.9 m²)
* TURN LANES IN EXCESS OF 400' (120 m) IN LENGTH MAY HAVE AN ADDITIONAL SET OF ARROW - "ONLY" INSTALLED MIDWAY BETWEEN THE OTHER TWO SETS OF ARROW - "ONLY".

TYPICAL LEFT (OR RIGHT) TURN LANE

TYPICAL TURN LANE MARKING



TYPICAL ISLAND MARKING

TYPE OF MARKING	WIDTH OF LINE	PATTERN	COLOR	SPACING / REMARKS
CENTERLINE ON 2 LANE PAVEMENT	4 (100)	SKIP-DASH	YELLOW	10' (3 m) LINE WITH 30' (9 m) SPACE
CENTERLINE ON MULTI-LANE UNDIVIDED PAVEMENT	2 @ 4 (100)	SOLID	YELLOW	11 (280) C-C
NO PASSING ZONE LINES: FOR ONE DIRECTION FOR BOTH DIRECTIONS	4 (100) 2 @ 4 (100)	SOLID SOLID	YELLOW YELLOW	5 1/2 (140) C-C FROM SKIP-DASH CENTERLINE 11 (280) C-C OMIT SKIP-DASH CENTERLINE BETWEEN
LANE LINES	4 (100) 5 (125) ON FREEWAYS	SKIP-DASH SKIP-DASH	WHITE WHITE	10' (3 m) LINE WITH 30' (9 m) SPACE
DOTTED LINES (EXTENSIONS OF CENTER, LANE OR TURN LANE MARKINGS)	SAME AS LINE BEING EXTENDED	SKIP-DASH	SAME AS LINE BEING EXTENDED	2' (600) LINE WITH 6' (1.8 m) SPACE
EDGE LINES	4 (100)	SOLID	YELLOW-LEFT WHITE-RIGHT	OUTLINE MOUNTABLE MEDIANS IN YELLOW; EDGE LINES ARE NOT USED NEXT TO BARRIER CURB
TURN LANE MARKINGS	6 (150) LINE; FULL SIZE LETTERS & SYMBOLS (8' (2.4m))	SOLID	WHITE	SEE TYPICAL TURN LANE MARKING DETAIL
TWO WAY LEFT TURN MARKING	2 @ 4 (100) EACH DIRECTION 8' (2.4m) LEFT ARROW	SKIP-DASH AND SOLID IN PAIRS	YELLOW WHITE	10' (3 m) LINE WITH 30' (9 m) SPACE FOR SKIP-DASH; 5 1/2 (140) C-C BETWEEN SOLID LINE AND SKIP-DASH LINE SEE TYPICAL TWO-WAY LEFT TURN MARKING DETAIL
CROSSWALK LINES (PEDESTRIAN) A. DIAGONALS (BIKE & EQUESTRIAN) B. LONGITUDINAL BARS (SCHOOL)	2 @ 6 (150) 12 (300) @ 45° 12 (300) @ 90°	SOLID SOLID SOLID	WHITE WHITE WHITE	NOT LESS THAN 6' (1.8 m) APART 2' (600) APART 2' (600) APART SEE TYPICAL CROSSWALK MARKING DETAILS.
STOP LINES	24 (600)	SOLID	WHITE	PLACE 4' (1.2 m) IN ADVANCE OF AND PARALLEL TO CROSSWALK, IF PRESENT. OTHERWISE, PLACE AT DESIRED STOPPING POINT. PARALLEL TO CROSSROAD CENTERLINE, WHERE POSSIBLE
PAINTED MEDIANS	2 @ 4 (100) WITH 12 (300) DIAGONALS @ 45° NO DIAGONALS USED FOR 4' (1.2 m) WIDE MEDIANS	SOLID	YELLOW; TWO WAY TRAFFIC WHITE; ONE WAY TRAFFIC	11 (280) C-C FOR THE DOUBLE LINE SEE TYPICAL PAINTED MEDIAN MARKING.
CORE MARKING AND CHANNELIZING LINES	8 (200) WITH 12 (300) DIAGONALS @ 45°	SOLID	WHITE	DIAGONALS: 15' (4.5 m) C-C (LESS THAN 30MPH (50 km/h)) 20' (6 m) C-C (30MPH (50 km/h) TO 45MPH (70 km/h)) 30' (9 m) C-C (OVER 45MPH (70 km/h))
RAILROAD CROSSING	24 (600) TRANSVERSE LINES; "RR" 15 6' (1.8 m) LETTERS; 16 (400) LINE FOR "X"	SOLID	WHITE	SEE STATE STANDARD 780001 AREA OF: "R"=3.6 SQ. FT. (0.33 m ²) EACH "X"=54.0 SQ. FT. (5.0 m ²)
SHOULDER DIAGONALS	12 (300) @ 45°	SOLID	WHITE - RIGHT YELLOW - LEFT	50' (15 m) C-C (LESS THAN 30MPH (50 km/h)) 75' (25 m) C-C (30 MPH (50 km/h) TO 45MPH (70 km/h)) 150' (45 m) C-C (OVER 45MPH (70 km/h))

FOR FURTHER DETAILS ON PAVEMENT MARKING REFER TO STANDARD SPECIFICATIONS FOR ROAD AND BRIDGE CONSTRUCTION AND STATE STANDARD 780001.

All dimensions are in inches (millimeters) unless otherwise shown.

REVISIONS	
NAME	DATE
EVERS	03-19-90
T. RAMMACHER	10-27-94
C. JUCIUS	09-09-09

ILLINOIS DEPARTMENT OF TRANSPORTATION
DISTRICT ONE
TYPICAL PAVEMENT MARKINGS

SCALE: NONE

DRAWN BY CADD

CHECKED BY

TC-13