

F.A. RTE.	SECTION	COUNTY	TOTAL SHEETS	SHEET NO.
2766	08-00168-00-BT	COOK	18	1
		ILLINOIS	CONTRACT NO. 63492	

SHEET INDEX

1. COVER SHEET
2. EXISTING AND PROPOSED SECTIONS, GENERAL NOTES AND HIGHWAY STANDARDS
3. SUMMARY OF QUANTITIES
4. GENERAL LAYOUT, SIGNAGE AND STRIPING PLAN
5. PLAN AND PROFILE HARLEM AVENUE STA. 2+82 TO 5+00
6. PLAN AND PROFILE LEHIGH AVENUE STA. 5+00 TO 9+50
7. PLAN AND PROFILE LEHIGH AVENUE STA. 9+50 TO 13+50
8. PLAN AND PROFILE LEHIGH AVENUE STA. 13+50 TO 18+50
9. PLAN AND PROFILE LEHIGH AVENUE STA. 18+50 TO 23+00
10. PLAN AND PROFILE LEHIGH AVENUE STA. 23+00 TO 27+50
11. PLAN AND PROFILE LEHIGH AVENUE STA. 27+50 TO 32+00
12. DETAILS
13. DETAILS
14. TC-13 DISTRICT ONE TYPICAL PAVEMENT MARKINGS
15. BD600-03 (BD-8) DETAILS FOR FRAMES AND LIDS ADJUSTMENT WITH MILLING
16. CROSS SECTIONS 1+00 TO 12+50
17. CROSS SECTIONS 13+00 TO 24+50
18. CROSS SECTIONS 25+00 TO 31+50

STATE OF ILLINOIS
DEPARTMENT OF TRANSPORTATION
DIVISION OF HIGHWAYS

PLANS FOR PROPOSED FEDERAL AID HIGHWAY

FAU ROUTE 2766 (LEHIGH AVENUE)
FAU 1297 (GLENVIEW ROAD) TO FAU 1352 (CHESTNUT AVENUE)
TECHNY TRAIL - SEGMENT 3 - BIKE PATH
SECTION 08-00168-00-BT
PROJECT CMM-9003(130)
VILLAGE OF GLENVIEW E07-07
COOK COUNTY
C-91-157-09

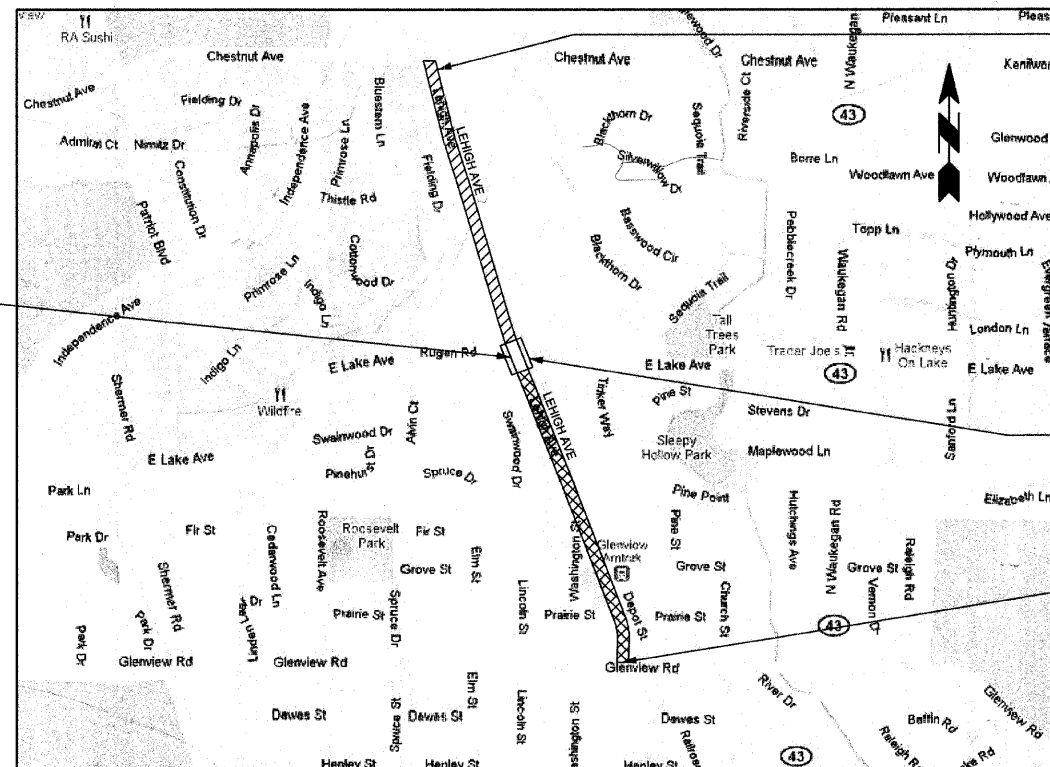


ROADWAY DATA

EXISTING A.D.T.: 11,000
PROPOSED A.D.T.: 11,000
FUNCTIONAL CLASSIFICATION:
COLLECTOR - URBAN
POSTED SPEED: 30 MPH
DESIGN SPEED: 30 MPH

PROJECT LOCATED IN THE
VILLAGE OF GLENVIEW

SECTION 35, TOWNSHIP 42 N, RANGE 12 E, 3RD P.M., NORTHFIELD TOWNSHIP

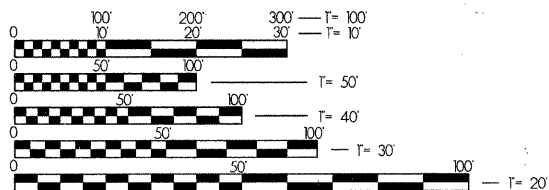


PROJECT ENDS
SIGNAGE AND
STRIPING ENDS
STA 57+03

OMISSION
STA 28+41 TO STA 30+89

PROJECT BEGINS
BIKE PATH,
SIGNAGE AND
STRIPING BEGIN
STA 2+82

EXISTING BRIDGE STRUCTURE NO.: 016-1129
CENTERLINE STATION: 28+87 TO 29+68
STRUCTURE LENGTH: 81 LF
FACILITY CARRIED: LEHIGH AVENUE
FACILITY CROSSED: EAST LAKE AVENUE



FULL SIZE PLANS HAVE BEEN PREPARED USING STANDARD ENGINEERING SCALES. REDUCED SIZED PLANS WILL NOT CONFORM TO STANDARD SCALES. IN MAKING MEASUREMENTS ON REDUCED PLANS, THE ABOVE SCALES MAY BE USED.

J.U.L.I.E.
JOINT UTILITY LOCATION INFORMATION FOR EXCAVATION
1-800-892-0123
OR 811

DANIEL CREANEY COMPANY
CONSULTING CIVIL ENGINEERS
450 SKOKIE BLVD, SUITE 105
NORTHBROOK, ILLINOIS (847) 480-5757

LOCATION MAP
N.T.S.

GROSS LENGTH = 5421 LF = 1.03 MILE
OMISSION LENGTH = 248 LF = 0.05 MILE
NET LENGTH = 5173 LF = 0.98 MILE

STATE OF ILLINOIS
DEPARTMENT OF TRANSPORTATION
DIVISION OF HIGHWAYS

APPROVED June 29 2010
D. O'Keefe
GLENVIEW, VILLAGE ENGINEER

PASSED JULY 12 2010
C. H. O'Keefe
DISTRICT ENGINEER OF LOCAL ROADS & STREETS

RELEASING FOR BID
BASED ON LIMITED
REVIEW JULY 15, 2010
D. M. O'Keefe
DEPUTY DIRECTOR OF HIGHWAYS, REGION 1 ENGINEER

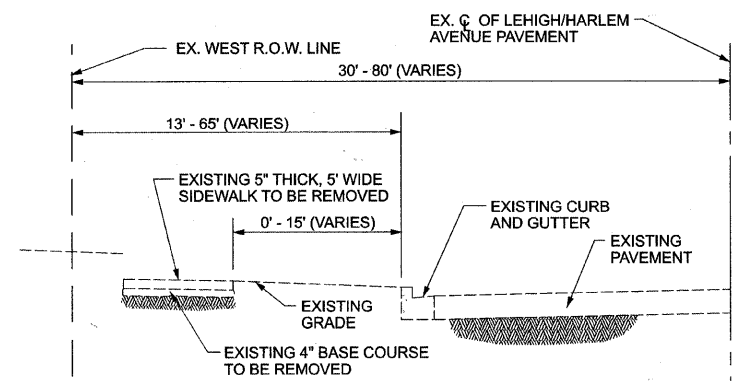
PRINTED BY THE AUTHORITY OF THE STATE OF ILLINOIS



JUNE 27 2010
Daniel A. Creaney
DANIEL A. CREANEY, DANIEL CREANEY COMPANY
450 SKOKIE BOULEVARD, SUITE 105
NORTHBROOK, ILLINOIS 60062 (847) 480-5757

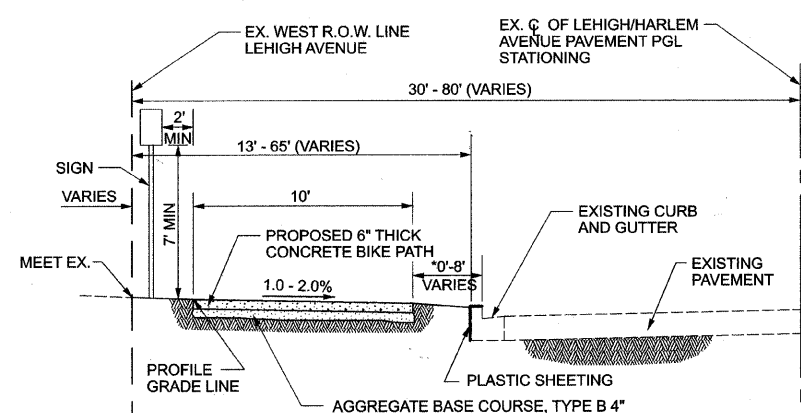
CONTRACT NO. 63492

PROGRAM & OFFICE ENGINEER: CHARLES F. RIDDLE, PE 847-705-4406 SCHAUMBURG, IL



TYPICAL EXISTING CONDITIONS SECTION

FAU ROUTE 2766 - STA. 2+82 TO STA. 28+41
LEHIGH AVENUE



TYPICAL PROPOSED BIKE PATH SECTION

FAU ROUTE 2766 - STA. 2+82 TO STA. 28+41
LEHIGH AVENUE

- * ALL AREAS LESS THAN 5' WILL BE INSTALLED AS PER THE DESIGN VARIANCE.
- NOTE: 1. SLOPE ADJACENT TO BIKE PATH SHALL NOT EXCEED 1:8 MAX.
2. WHERE NO SEPERATION BETWEEN THE PROPOSED BIKE PATH AND EXISTING CURB EXIST, THE CONTRACTOR SHALL INSTALL PLASTIC SHEETING TO PREVENT CONTACT BETWEEN FRESHLY POURED CONCRETE AND EXISTING CURB.
- PLASTIC SHEETING MATERIAL, INSTALLATION AND EXISTING CURB PROTECTION IS INCLUDED IN PORTLAND CEMENT CONCRETE PAVEMENT 6", SPECIAL, PAY ITEM.

GENERAL NOTES/SPECIFICATIONS

- BEFORE STARTING ANY EXCAVATION, THE CONTRACTOR SHALL CALL J.U.L.I.E. (1-800-892-0123) FOR FIELD LOCATIONS OF BURIED ELECTRIC, TELEPHONE AND GAS FACILITIES. (48 HOURS NOTIFICATION IS REQUIRED).
- THE CONTRACTOR SHALL COORDINATE CONSTRUCTION ACTIVITIES WITH UTILITY COMPANIES, MUNICIPALITIES AND ADJACENT CONTRACTORS.
- THE CONTRACTOR WILL NOT BE ALLOWED TO SET UP A YARD OR FIELD OFFICE ON STATE PROPERTY WITHOUT WRITTEN PERMISSION FROM THE DEPARTMENT.
- BARRICADES: THE CONTRACTOR SHALL PROVIDE AND INSTALL TWO (2) WEIGHTED SAND BAGS ON EACH TYPE I OR TYPE II BARRICADE USED - ONE (1) WEIGHTED SAND BAG ACROSS EACH BOTTOM RAIL.
- SAW CUTTING WILL NOT BE PAID FOR SEPARATELY BUT SHALL BE CONSIDERED INCLUDED IN THE COST OF THE ITEM BEING REMOVED, UNLESS OTHERWISE SPECIFIED.
- ANY REFERENCE TO "STANDARD" THROUGHOUT THE PLANS OR SPECIAL PROVISIONS SHALL BE CONSIDERED TO BE THE "STANDARD SPECIFICATIONS FOR ROAD AND BRIDGE CONSTRUCTION" ADOPTED JANUARY 1, 2007 BY THE STATE OF ILLINOIS DEPARTMENT OF TRANSPORTATION, AND "SUPPLEMENTAL SPECIFICATIONS AND RECURRING SPECIAL PROVISIONS" DATED JANUARY 1, 2010.
- THE CONTRACTOR SHALL BE RESPONSIBLE FOR CONTACTING VILLAGE OF GLENVIEW MAINTAINING SANITARY SEWERS, WATERMANS, AND STREET LIGHTS TO VERIFY THE MATERIALS AND METHODS ALLOWED FOR ADJUSTMENT, RELOCATION, OR EXTENSION OF THE UTILITY INVOLVED.
- THE LOCATION AND ELEVATION OF EXISTING UTILITIES ARE APPROXIMATE AND ARE PROVIDED BY THE OWNERS. THE EXACT LOCATIONS AND ELEVATIONS ARE TO BE VERIFIED BY THE CONTRACTOR THROUGH THE OWNER OF THE UTILITY.
- THE COST OF MAKING STORM SEWER CONNECTIONS TO EXISTING OR PROPOSED SEWER SHALL BE INCLUDED IN THE COST OF STORM SEWER BEING CONNECTED.
- ALL EXISTING TOPOGRAPHY, UNDERGROUND UTILITIES, STRUCTURES AND ASSOCIATED FACILITIES SHOWN ON THESE DRAWINGS HAVE BEEN PLOTTED FROM AVAILABLE SURVEYS AND RECORDS. THEREFORE, THEIR LOCATIONS AND ELEVATIONS MUST BE CONSIDERED APPROXIMATE ONLY. THERE MAY BE OTHER FACILITIES, THE EXISTENCE OF WHICH IS NOT PREVIOUSLY KNOWN. THE CONTRACTOR SHALL FIELD VERIFY LOCATIONS, ELEVATIONS AND SIZES OF ALL UTILITIES AND STRUCTURES TO BE REPLACED PRIOR TO ORDERING THE APPROPRIATE STRUCTURES AND MATERIALS. THE CONTRACTOR IS TO NOTIFY THE ENGINEER OF ANY DISCREPANCIES PRIOR TO STARTING THE WORK.
- VEHICULAR AND PEDESTRIAN TRAFFIC SHALL BE MAINTAINED AT ALL TIMES DURING CONSTRUCTION. THE CONTRACTOR SHALL MAINTAIN THE ENTRANCES FROM ADJACENT SIDE ROADS AND ACCESS TO EXISTING PROPERTIES ALONG THE PROPOSED INFRASTRUCTURE IMPROVEMENTS. INTERFERENCE AND INCONVENIENCE OF ACCESS TO ABUTTING OWNERS SHALL BE KEPT TO A MINIMUM.
- THE EXACT LOCATION OF THE SIDEWALK SAW CUTTING (FOR UTILITY INSTALLATION, PROJECT STAGING, PROJECT LIMITS, ETC.) SHALL BE DETERMINED BY THE CONTRACTOR AND APPROVED IN THE FIELD BY THE ENGINEER. SIDEWALK SAW-CUTTING, REQUIRED FOR SIDEWALK REMOVAL, SHALL BE INCLUDED IN THE COST OF SIDEWALK REMOVAL.
- THE EXACT LOCATION AND LENGTH OF SECTION OF THE CURB TO BE REMOVED SHALL BE DETERMINED BY THE CONTRACTOR AND APPROVED IN THE FIELD BY THE ENGINEER. FULL DEPTH CURB SAW CUTTING REQUIRED FOR CURB REMOVAL SHALL BE INCLUDED IN THE COST OF CONCRETE CURB REMOVAL.
- THE MINIMUM OF SIX SACKS OF CEMENT IS REQUIRED FOR EACH CUBIC YARD OF CONCRETE FOR CURB AND GUTTER AND SIDEWALK/PATH CONSTRUCTION.
- TEN (10) FEET WIDE CONCRETE RAMPS SHALL BE INSTALLED AT ALL STREET INTERSECTIONS WITH THE PROPOSED BIKE PATH AND AS DIRECTED BY THE ENGINEER AT OTHER LOCATIONS. ALL CONCRETE RAMPS SHALL CONSIST OF A SURFACE OF TRUNCATED DOMES TEXTURED PER IDOT STANDARD 424001-05 AND IN COMPLIANCE WITH SECTION 424.09 OF STANDARD SPECIFICATIONS REQUIREMENTS. THE MINIMUM WIDTH OF TRUNCATED DOME FOR TEN (10) FEET WIDE CONCRETE RAMP SHALL BE EIGHT (8) FEET. THE MINIMUM LENGTH OF TRUNCATED DOME FOR CONCRETE RAMP SHALL BE THREE (3) FEET.
- THE REPLACED OR NEW CONCRETE PATH CURB RAMP SHALL BE DOWELED WITH THE MINIMUM OF THREE (12" O.C.) NO. 4 (18" LONG) REINFORCEMENT BARS TO THE EXISTING CURB AND GUTTER. REINFORCING SHALL BE INCLUDED IN THE COST OF PORTLAND CEMENT CONCRETE SIDEWALK ITEM CONSTRUCTION.
- IN PAVED AREAS PLASTIC ADJUSTMENT RINGS SHALL BE USED, IF REQUIRED. PLASTIC ADJUSTMENT RING SUPPLY AND INSTALLATION SHALL BE INCLUDED IN THE COST OF MANHOLE/INLET CONSTRUCTION.
- WHEN CONSTRUCTION OCCURS IN THE VICINITY OF EXISTING TREES OR WITHIN THE ROOT ZONE OF EXISTING PLANT MATERIAL, SPECIAL PLANT CARE AND TREE PROTECTION WILL BE REQUIRED BY THE ENGINEER.
- TEMPORARY FENCING SHALL BE MAINTAINED, REPAIRED AND/OR REPLACED (IF REQUIRED BY THE ENGINEER) WITHOUT ADDITIONAL COST TO THE VILLAGE DURING THE ENTIRE CONSTRUCTION PERIOD. THE ENGINEER'S APPROVAL FOR TEMPORARY FENCE REMOVAL MUST BE OBTAINED BY THE CONTRACTOR.
- THE CONTRACTOR AND ENGINEER SHALL MEET WITH THE LIBRARY CONTRACTOR AS NECESSARY AND COORDINATE SIDEWALK REMOVAL, BIKE PATH AND CURB CONSTRUCTION WORK AND PROJECT LIMIT AND/OR MATCHING LOCATIONS.
- ALL UTILITY TRENCHES UNDER CONCRETE SIDEWALK SHALL BE BACKFILLED AS PER TRENCH BACKFILL SECTION 208 OF THE STANDARD SPECIFICATIONS.

LEGEND	
EXISTING	PROPOSED
	STORM SEWER
	SANITARY SEWER
	WATER MAIN
	MANHOLE
	CATCHBASIN
	INLET
	FIRE HYDRANT
	VALVE VAULT
	LIGHT POLE
	POWER POLE
	HANDHOLE

HOT MIX ASPHALT MIXTURE REQUIREMENTS	
MIXTURE TYPE	AIR VOIDS @ Ndes
CLASS D PATCHES (HMA BINDER IL-19 mm), 6"	4% @ 70 Gyr.

THE UNIT WEIGHT USED TO CALCULATE ALL HMA SURFACE MIXTURE QUANTITIES IS 112 LBS/SQ YD IN. THE "AC TYPE" FOR POLYMERIZED HMA MIXES SHALL BE "SBS/SBR PG 70-22" AND FOR NON-POLYMERIZED HMA, THE "AC TYPE" SHALL BE "PG 64-22" UNLESS MODIFIED BY DISTRICT ONE SPECIAL PROVISIONS. FOR "PERCENT OF RAP" SEE DISTRICT ONE SPECIAL PROVISIONS.

HIGHWAY STANDARDS

- 000001-05 STANDARD SYMBOLS, ABBREVIATIONS AND PATTERNS
- 280001-05 TEMPORARY EROSION CONTROL SYSTEMS
- 353001-04 PCC BASE COURSE WITH HMA BINDER AND SURFACE COURSES
- 424001-05 CURB RAMPS FOR SIDEWALKS
- 442201-03 CLASS C AND D PATCHES
- 602401-02 MANHOLE TYPE A
- 606001-04 CONCRETE CURB TYPE B AND COMBINATION CONCRETE CURB AND GUTTER
- 701801-04 4 LANE CLOSURE MULTILANE, 1W OR 2W CROSSWALK OR SIDEWALK
- 701901-01 TRAFFIC CONTROL DEVICES
- 720001-01 SIGN PANEL MOUNTING DETAILS
- 720006-02 SIGN PANEL ERECTION DETAILS
- 720011-01 METAL POSTS FOR SIGNS, MARKERS & DELINEATORS
- 729001-01 APPLICATIONS OF TYPES A & B METAL POSTS (FOR SIGNS & MARKERS)
- 814001-02 HANDHOLES
- 836001 LIGHT POLE FOUNDATION

FILE NAME =	USER NAME = #USER#	DESIGNED RM, MT	REVISED -
#FILEL#		DRAWN JP, JJ	REVISED -
	PLOT SCALE = 1" = 20'	CHECKED DAC	REVISED -
	PLOT DATE = 6/28/2010	DATE	REVISED -

STATE OF ILLINOIS
DEPARTMENT OF TRANSPORTATION

EX AND PROPOSED SECTIONS, GENERAL NOTES, HWY STANDARDS
TECHNY TRAIL - SEGMENT 3 BIKE PATH
SCALE: SHEET NO. 2 OF 18 SHEETS STA. TO STA.

F.A. RTE.	SECTION	COUNTY	TOTAL SHEETS	SHEET NO.
2766	08-00168-00-BT	COOK	18	2
GLENVIEW, ILLINOIS		CONTRACT NO. 63492		
ILLINOIS FED. AID PROJECT				

CODE NUMBER	PAY ITEM	CONSTRUCTION TYPE CODE Y047	
		UNIT	TOTAL QUANTITY
20100110	TREE REMOVAL (6 TO 15 UNITS DIAMETER)	UNIT	102
20100210	TREE REMOVAL (OVER 15 UNITS DIAMETER)	UNIT	18
20101200	TREE ROOT PRUNING	EACH	2
** 20101700	SUPPLEMENTAL WATERING	UNIT	1
20200100	EARTH EXCAVATION	CU YD	1811
20201200	REMOVAL AND DISPOSAL OF UNSUITABLE MATERIAL	CU YD	80
X 2080 250	TRENCH BACKFILL, SPECIAL	CU YD	144
** Δ 21101615	TOPSOIL FURNISH AND PLACE, 4"	SQ YD	1654
Δ X 213 0010	EXPLORATION TRENCH, SPECIAL	FOOT	20
** Δ X 2520 650	SODDING, SALT TOLERANT (SPECIAL)	SQ YD	1654
28000510	INLET FILTERS	EACH	26
Δ 28000520	ABOVE GRADE INLET FILTERS	EACH	5
35101600	AGGREGATE BASE COURSE, TYPE B 4"	SQ YD	2696
X 4240 440	PORTLAND CEMENT CONCRETE SIDEWALK 6 INCH, (SPECIAL)	SQ FT	24264
42400800	DETECTABLE WARNINGS	SQ FT	314
42001300	PROTECTIVE COAT	SQ YD	2696
44000100	PAVEMENT REMOVAL	SQ YD	299
44000600	SIDEWALK REMOVAL	SQ FT	13492
Δ 44000300	CURB REMOVAL	FOOT	281
44201717	CLASS D PATCHES, TYPE II, 6 INCH	SQ YD	7
550A0040	STORM SEWERS, CLASS A, TYPE 1 10"	FOOT	15
550A0110	STORM SEWERS, CLASS A, TYPE 1 21"	FOOT	450
550B0920	STORM SEWERS, CLASS B, TYPE 4 8"	FOOT	18
55100400	STORM SEWER REMOVAL 10"	FOOT	31
60218300	MANHOLES, TYPE A, 4'-DIAMETER, TYPE 1 FRAME, OPEN LID	EACH	6
60234200	INLETS, TYPE A, TYPE 1 FRAME, OPEN LID	EACH	1
60600605	CONCRETE CURB, TYPE B	FOOT	26
60602200	CONCRETE GUTTER	FOOT	100
60603800	COMBINATION CONCRETE CURB AND GUTTER, TYPE B-6.12	FOOT	26
Δ 2010 1000	TEMPORARY FENCE	FOOT	50
67100100	MOBILIZATION	L SUM	1

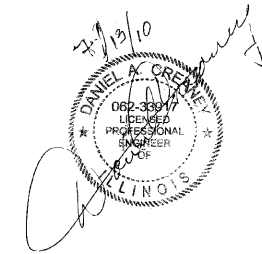
Δ SPECIAL PROVISION
** SPECIALTY ITEMS

CODE NUMBER	PAY ITEM	CONSTRUCTION TYPE CODE Y047	
		UNIT	TOTAL QUANTITY
70102640	TRAFFIC CONTROL AND PROTECTION, STANDARD 701801	L SUM	1
72000100	SIGN PANEL - TYPE 1	SQ FT	40
72900100	METAL POST, TYPE-A	FOOT	98
** 78000200	THERMOPLASTIC PAVEMENT MARKING - LINE 4"	FOOT	5635
** 78000600	THERMOPLASTIC PAVEMENT MARKING - LINE 12"	FOOT	360
** 81400105	HANDHOLE, SPECIAL	EACH	8
Δ ** 83600100	LIGHT POLE FOUNDATION	EACH	8
** A2002924	TREE, CELTIS OCCIDENTALIS (COMMON HACKBERRY), 3" CALIPER, BALLED AND BURLAPPED	EACH	1
** A2006524	TREE, QUERCUS BICOLOR (SWAMP WHITE OAK), 3" CALIPER, BALLED AND BURLAPPED	EACH	1
** A2006726	TREE, QUERCUS MACROCARPA (BUR OAK), 3" CALIPER, BALLED AND BURLAPPED	EACH	1
Δ ** A2012003	TREE, AESCULUS X CARNEA FORT MCNAIR (FORT MCNAIR RED HORSECHESTNUT), 3" CALIPER, BALLED AND BURLAPPED, MATCHING HEADS	EACH	1
** B2004484	TREE, PYRUS CALLERYANA AUTUMN BLAZE (AUTUMN BLAZE CALLERY PEAR), 3" CALIPER, TREE FORM, BALLED AND BURLAPPED	EACH	5
** B2006322	TREE, SYRINGA RETICULATA IVORY SILK (IVORY SILK JAPANESE TREE LILAC), 3" CALIPER, BALLED AND BURLAPPED	EACH	4
** D2003636	EVERGREEN, TAXUS X MEDIA HICKSII (HICKS ANGIO/JAPANESE YEW), 3" WIDTH, BALLED AND BURLAPPED	EACH	8
Δ K0026830	SHRUB REMOVAL	EACH	8
Δ 2010 1100	TREE TRUNK PROTECTION	EACH	1
Δ X0322917	PROPOSED STORM SEWER CONNECTION TO EXISTING MANHOLE	EACH	3
Δ Z00 232 04	SEDIMENT CONTROL, SILT FENCE	FOOT	1824
** X0324915	RELOCATE LIGHTING UNITS AND POLES	EACH	8
Δ X0325207	TELEVISION INSPECTION OF SEWER	FOOT	590
Δ X0325225	BRICK PAVEMENT REMOVAL AND REPLACEMENT	SQ FT	564
Δ X7240505	RELOCATE SIGN PANEL AND POST	EACH	12
Δ ** X8160162	UNIT DUCT, 600V, 2-1C NO.8, 1/C NO.10 GROUND, (EPR-TYPE RHW), 1 1/4" DIA. POLYETHYLENE	FOOT	335
Δ Z0017500	DRAINAGE & UTILITY STRUCTURE ADJUSTMENT (SPECIAL)	EACH	8
Δ Z0018700	DRAINAGE STRUCTURE TO BE REMOVED	EACH	5
Δ Z0041700	PLUG EXISTING STORM SEWERS	EACH	1
Δ XX001011	BICYCLE RACKS	EACH	2
Δ XX004744	BICYCLE RACK TO BE REMOVED	EACH	1
** XX006339	FENCE TO BE REMOVED AND RELOCATED	FOOT	22
Δ X032 6657	RELOCATE SIGN, SPECIAL	EACH	5

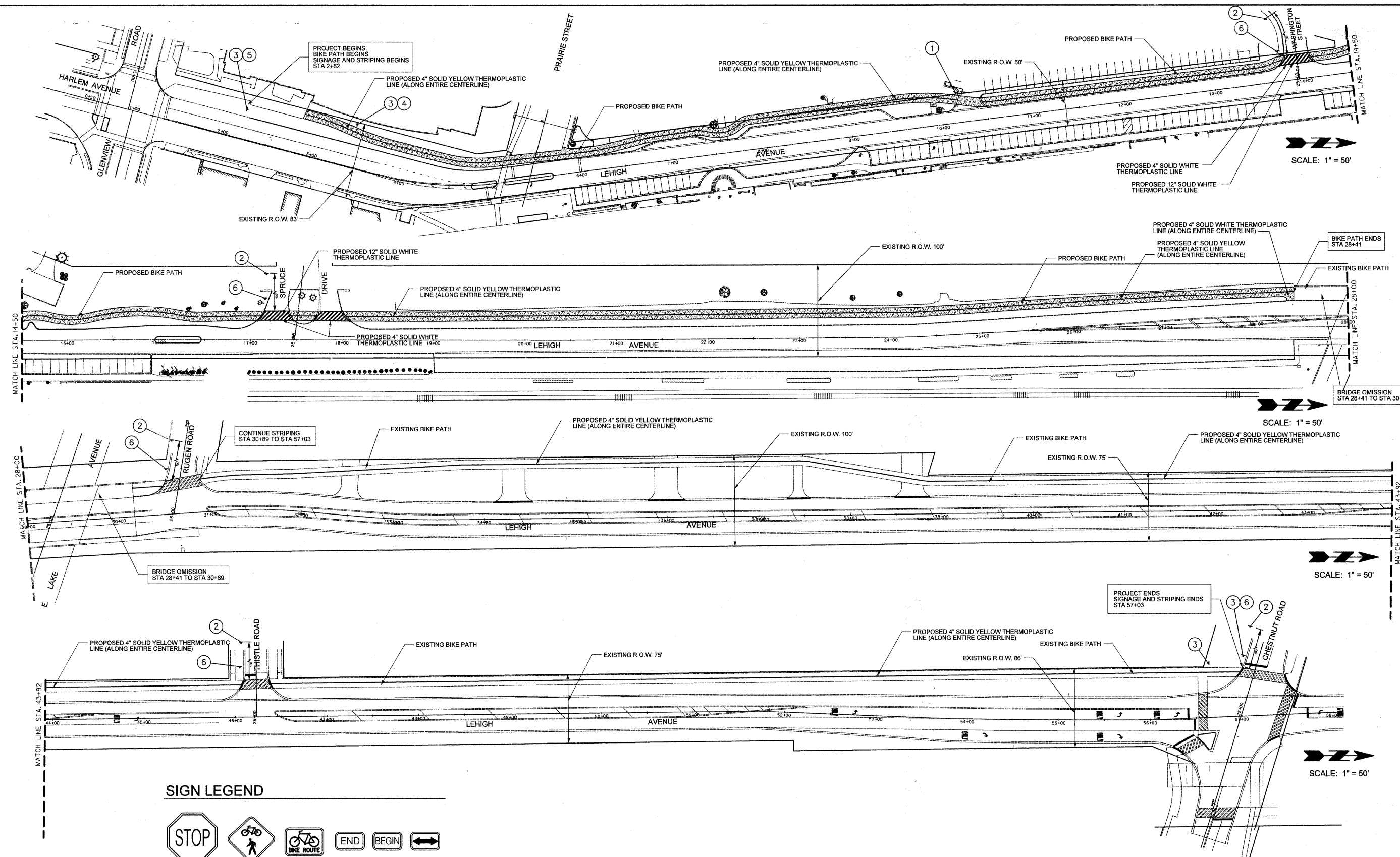
Δ SPECIAL PROVISION
** SPECIALTY ITEMS

EARTHWORK SCHEDULE

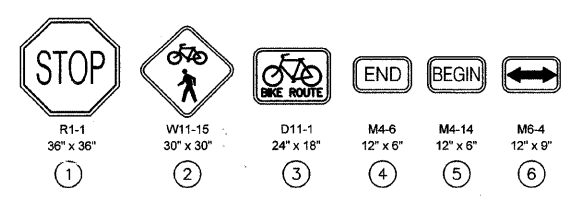
LOCATION	EARTH EXCAVATION (CUBIC YARD)	EARTH EXCAVATION ADJUSTED FOR SHRINKAGE (CUBIC YARD)	EMBANKMENT (CUBIC YARD)	EARTHWORK BALANCE WASTE (+) OR SHORTAGE (-) (CUBIC YARD)
STA. 1+00 TO 10+00	641.58	481.19	176.08	+305.1
STA. 10+00 TO 20+00	702.39	526.79	210.36	+316.4
STA. 20+00 TO 30+00	467.42	350.56	589.25	-238.7
STA. 30+00 TO 31+50	0.00	0.00	0.00	0
TOTAL	1811.39	1358.54	975.69	+382.8



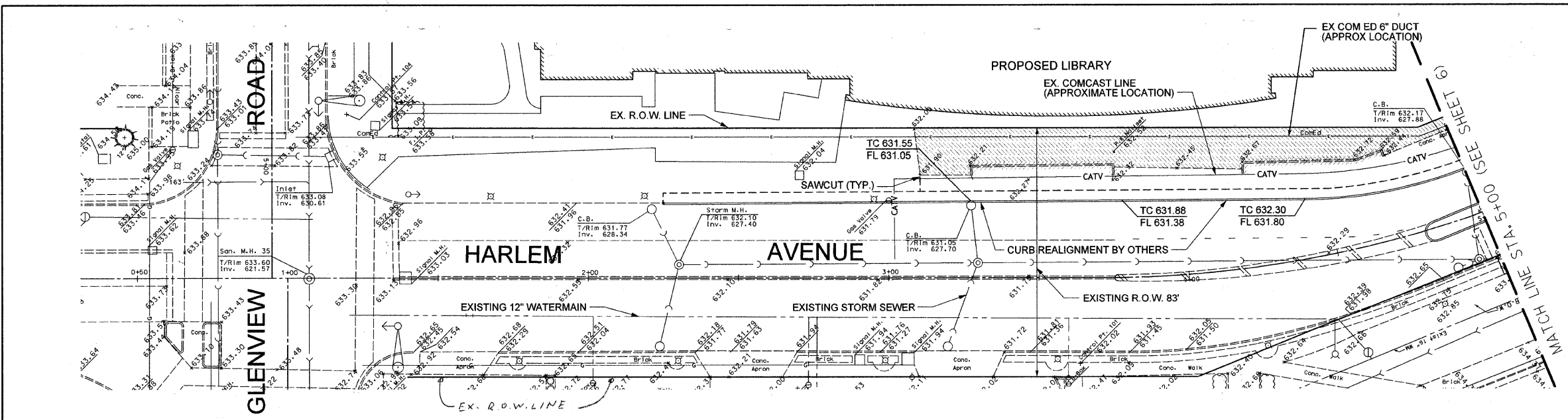
BENCH MARK: GPS Station Number 23
A "GPS" monument on the N side of Rugen Road. (Glenview)
SW-ly of 2134D 1.1' N-ly of the N edge of the sidewalk,
26.5' N-ly of the centerline of Rugen Road, 7.39' E-ly of a
"+" cut in the NNE flange bolt of a fire hydrant, 29.98' W-ly
of a DHN and Cap to the S face of a power pole, and 27.60'
SSE-ly of the SW corner of the bottom brick in the "Glenview
Gardens" sign.
ELEVATION = 635.51'



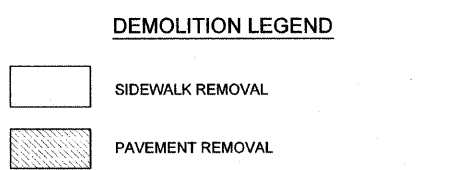
SIGN LEGEND



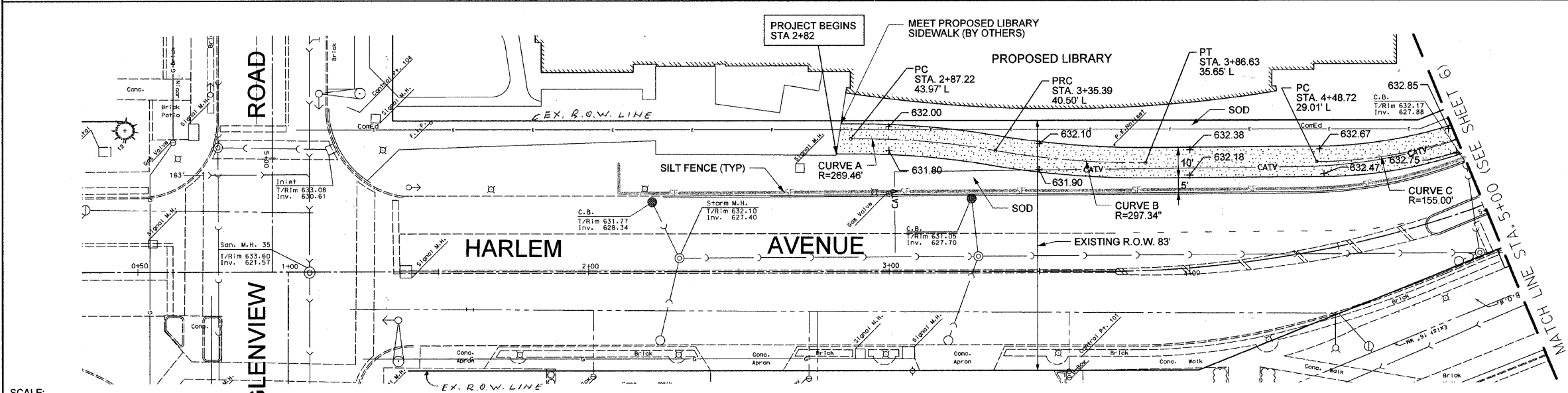
FILE NAME = #FILEL#	USER NAME = #USER#	DESIGNED RH, MT	REVISED -	STATE OF ILLINOIS DEPARTMENT OF TRANSPORTATION	GENERAL LAYOUT, SIGNAGE AND STRIPING PLAN TECHNY TRAIL - SEGMENT 3 BIKE PATH		F.A. RTE. 2766	SECTION 08-00168-00-BT	COUNTY COOK	TOTAL SHEETS 18	SHEET NO. 4	
PLOT SCALE = 1" = 20'		DRAWN SP, JJ	REVISED -		SCALE: 1" = 50'	SHEET NO. 4 OF 18 SHEETS	STA. 2+82 TO STA. 57+03	GLENVIEW, ILLINOIS		CONTRACT NO. 63492		
PLOT DATE = 6/28/2010		CHECKED DMC	REVISED -		ILLINOIS FED. AID PROJECT							
		DATE	REVISED -									
			REVISED -									



SCALE: 1" = 20'

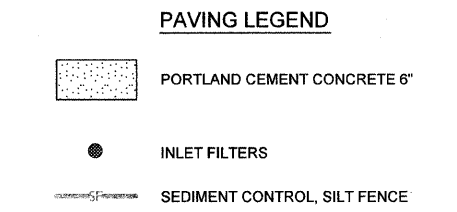


EXISTING CONDITIONS AND DEMOLITION

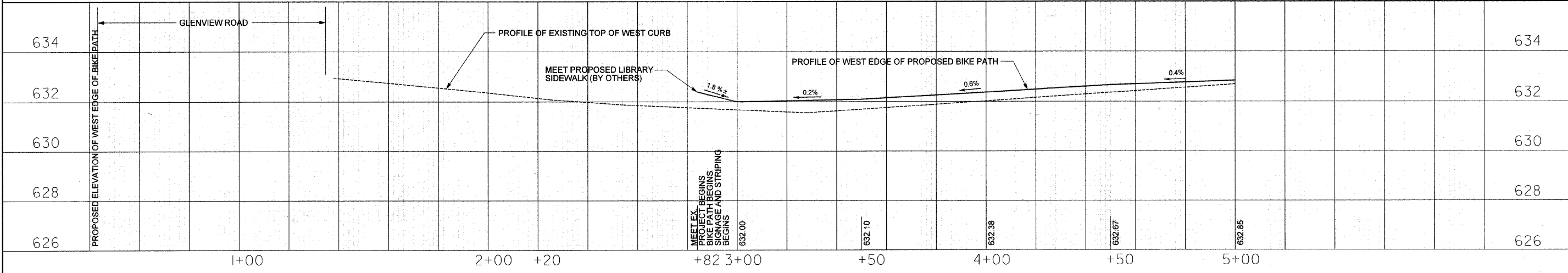


SCALE:
HORIZONTAL: 1" = 20'
VERTICAL: 1" = 2'

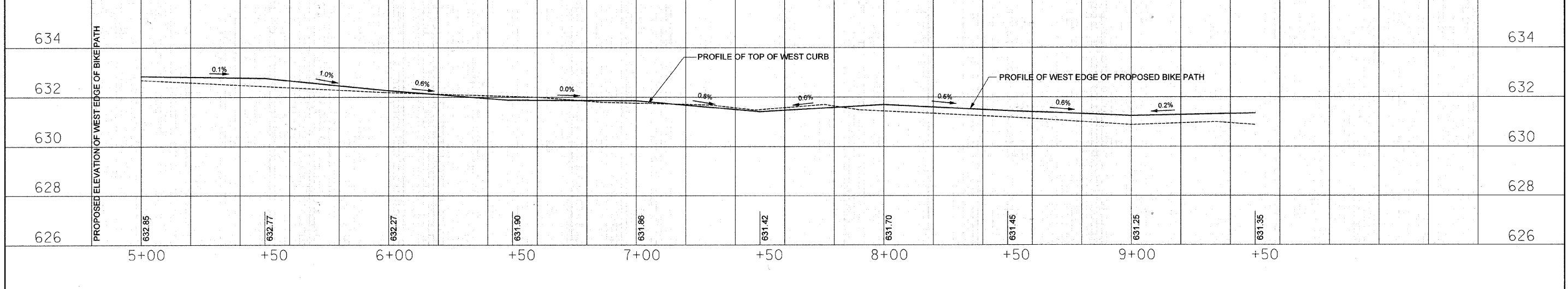
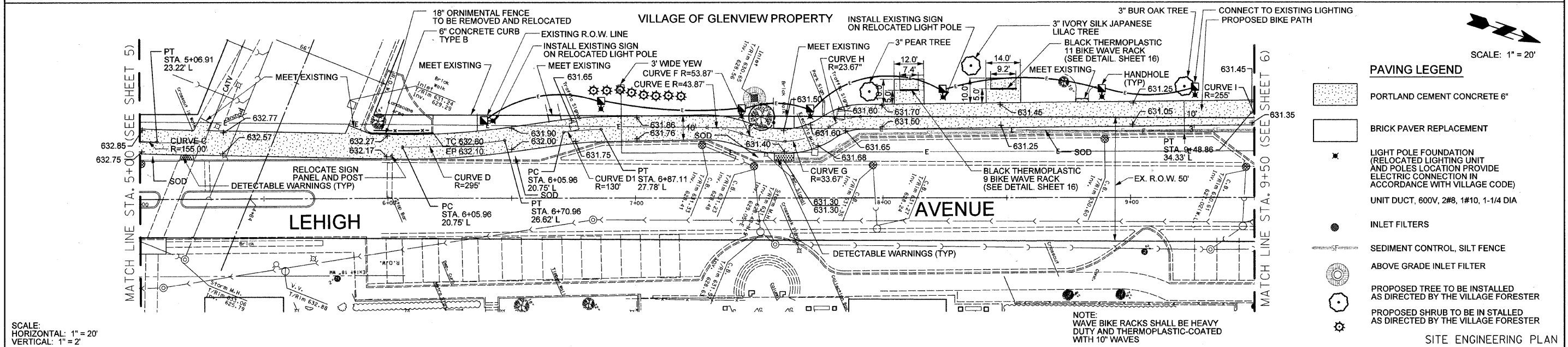
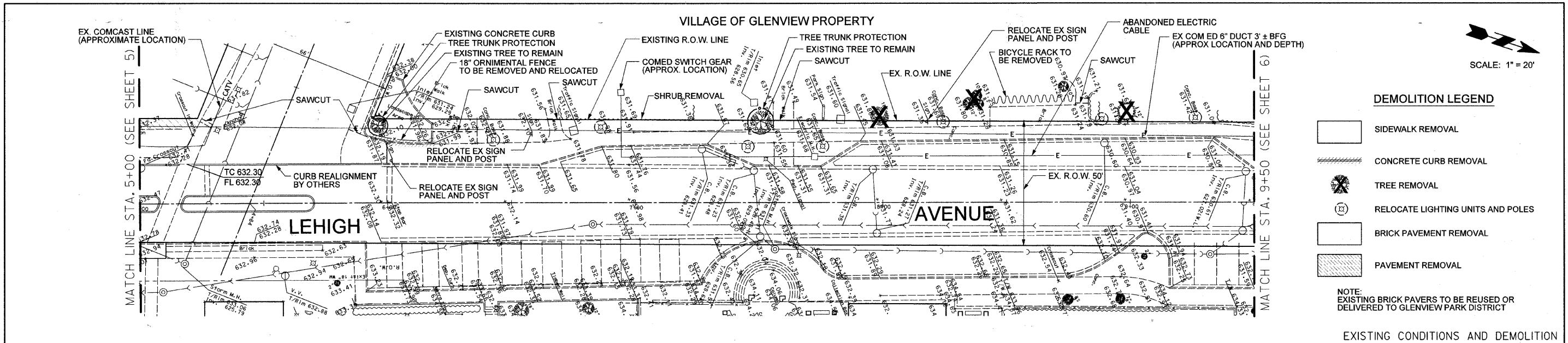
SCALE: 1" = 20'



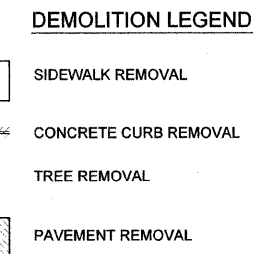
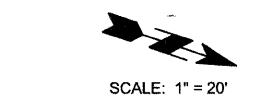
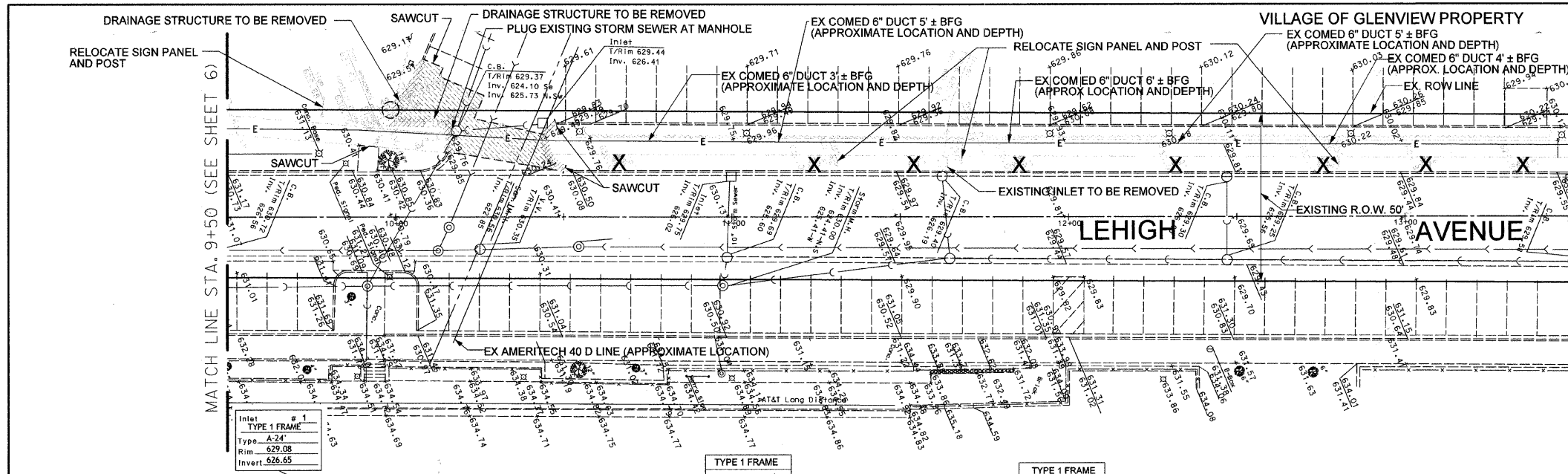
SITE ENGINEERING PLAN



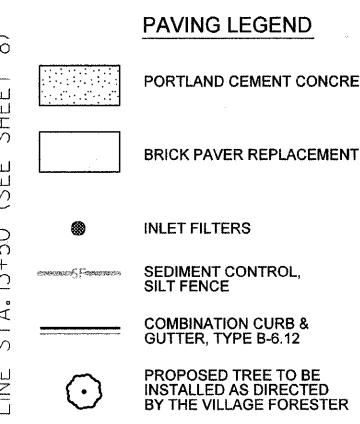
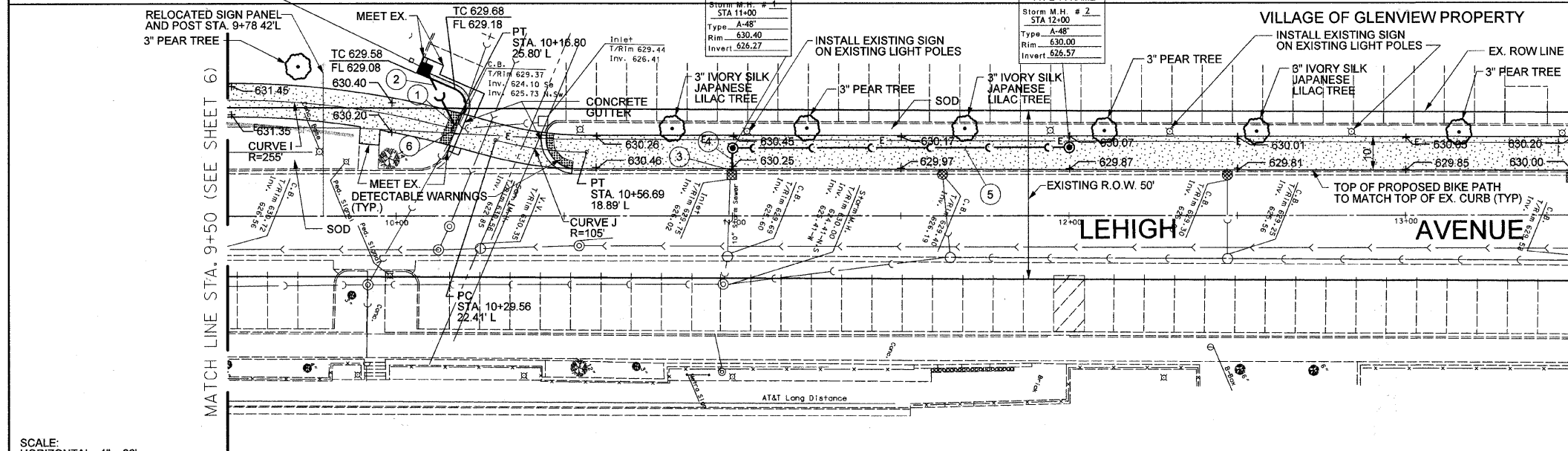
FILE NAME =	USER NAME = #USER#	DESIGNED RH	REVISED -	STATE OF ILLINOIS DEPARTMENT OF TRANSPORTATION	PLAN AND PROFILE - STA. 2+82 TO 5+00 TECHNY TRAIL - SEGMENT 3 BIKE PATH	F.A. RTE.	SECTION	COUNTY	TOTAL SHEETS	SHEET NO.	
#FILEL#	PLOT SCALE = 1" = 20'	DRAWN UP	REVISED -			2766	08-00168-00-BT	COOK	18	5	
	PLOT DATE = 6/28/2010	CHECKED RH	REVISED -			GLENVIEW, ILLINOIS CONTRACT NO. 63492					
		DATE	REVISED -			ILLINOIS FED. AID PROJECT					
				SCALE: 1" = 20'	SHEET NO. 5 OF 18 SHEETS	STA. 1+00 TO STA. 5+00					



FILE NAME =	USER NAME = #USER#	DESIGNED RA	REVISED -	STATE OF ILLINOIS DEPARTMENT OF TRANSPORTATION	PLAN AND PROFILE - STA. 5+00 TO 9+50 TECHNY TRAIL - SEGMENT 3 BIKE PATH	F.A. RTE	SECTION	COUNTY	TOTAL SHEETS	SHEET NO.	
#FILE#	PLOT SCALE = 1" = 20'	DRAWN SP	REVISED -			2766	08-00168-00-BT	COOK	18	6	
	PLOT DATE = 6/28/2010	CHECKED RA	REVISED -			GLENVIEW, ILLINOIS CONTRACT NO. 63492					
		DATE	REVISED -			ILLINOIS FED. AID PROJECT					



EXISTING CONDITIONS AND DEMOLITION

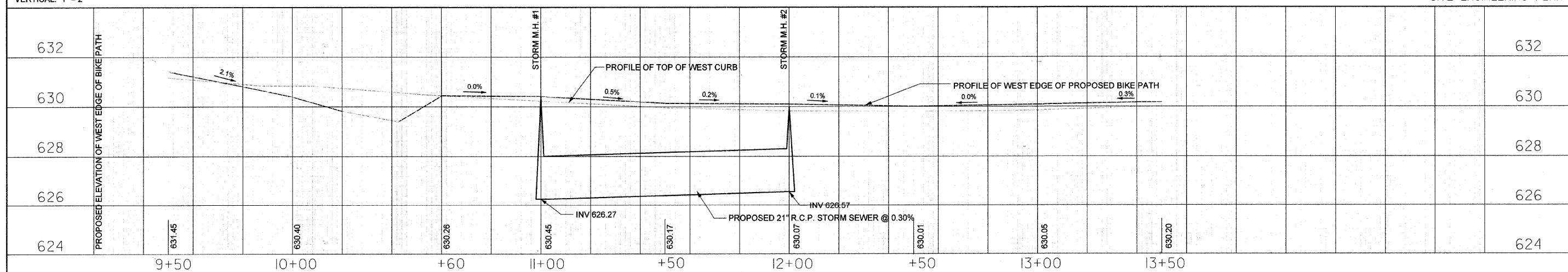


NOTE: CONTRACTOR SHALL LOCATE EXISTING COMED AND OTHER UTILITIES PRIOR TO STORM SEWER INSTALLATION. UTILITY LOCATION AND IF NECESSARY STORM SEWER LOCATION CHANGE IS INCLUDED IN STORM SEWER INSTALLATION PAY ITEM

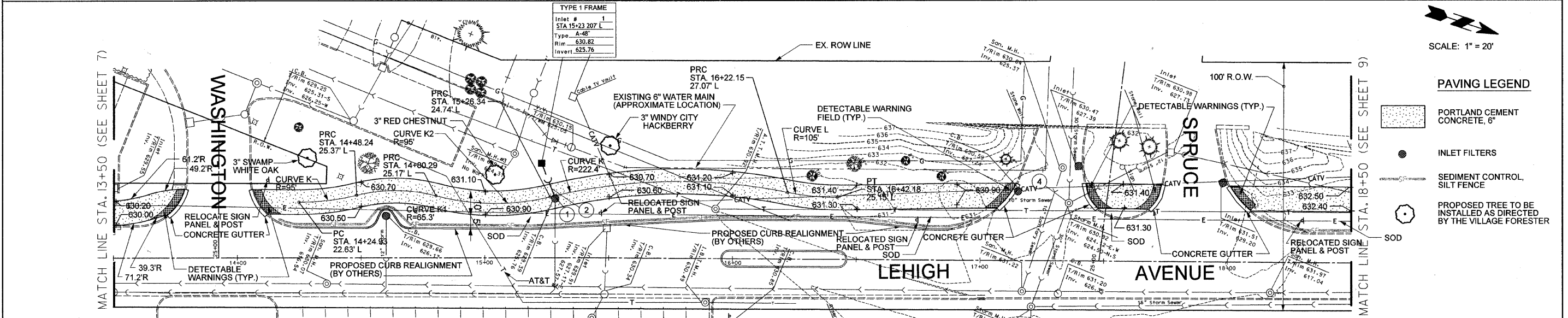
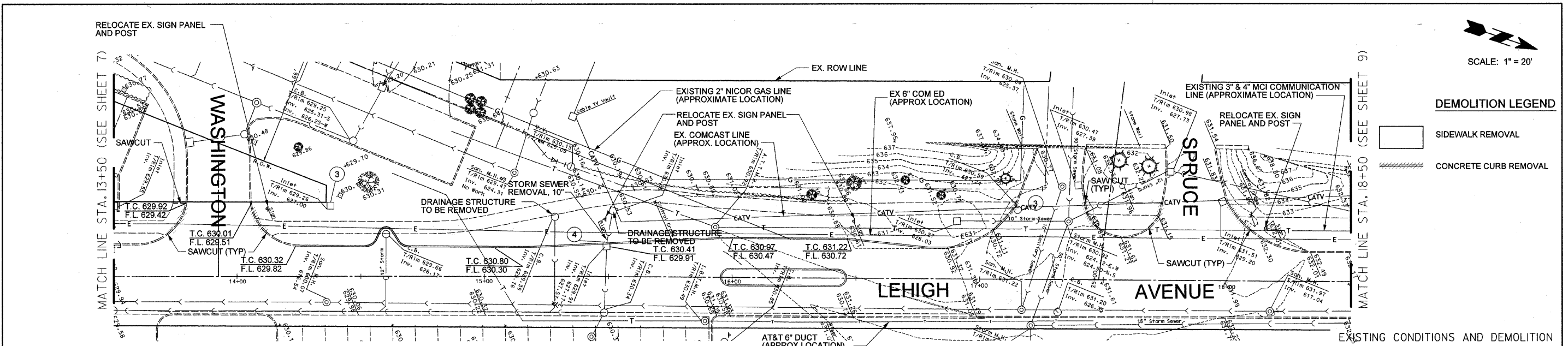
- STORM SEWER DATA**
- 1 CONNECT TO EXISTING CATCHBASIN BY CORE AND BOOT IN STRUCTURE WALL INV 625.75
 - 2 18 L.F., 8" P.V.C. SDR-26 @ 5.00%
 - 3 CONNECT TO EXISTING INLET BY CORE AND BOOT IN STRUCTURE WALL INV 626.20
 - 4 7 L.F., 10" R.C.P. @ 1.00%
 - 5 100 L.F., 21" R.C.P. @ 0.30%
 - 6 ADJUST RIM & REPLACE GRATE (SUITABLE FOR BICYCLE TRAFFIC)

SCALE:
HORIZONTAL: 1" = 20'
VERTICAL: 1" = 2'

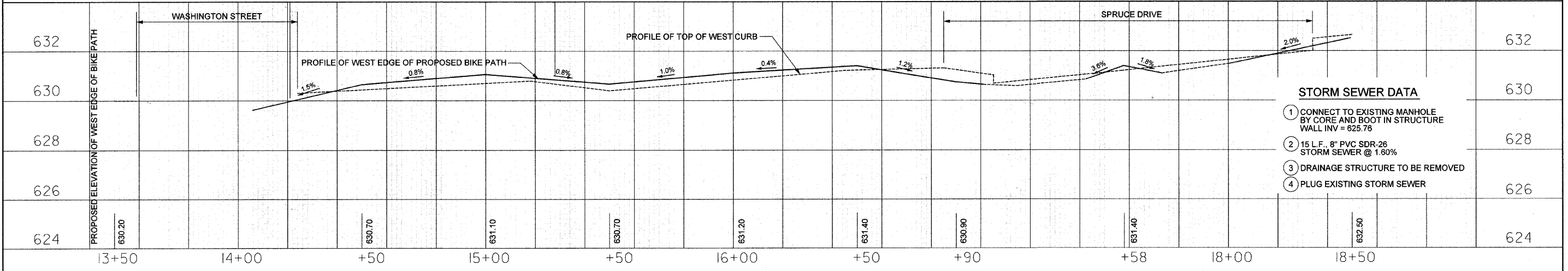
SITE ENGINEERING PLAN



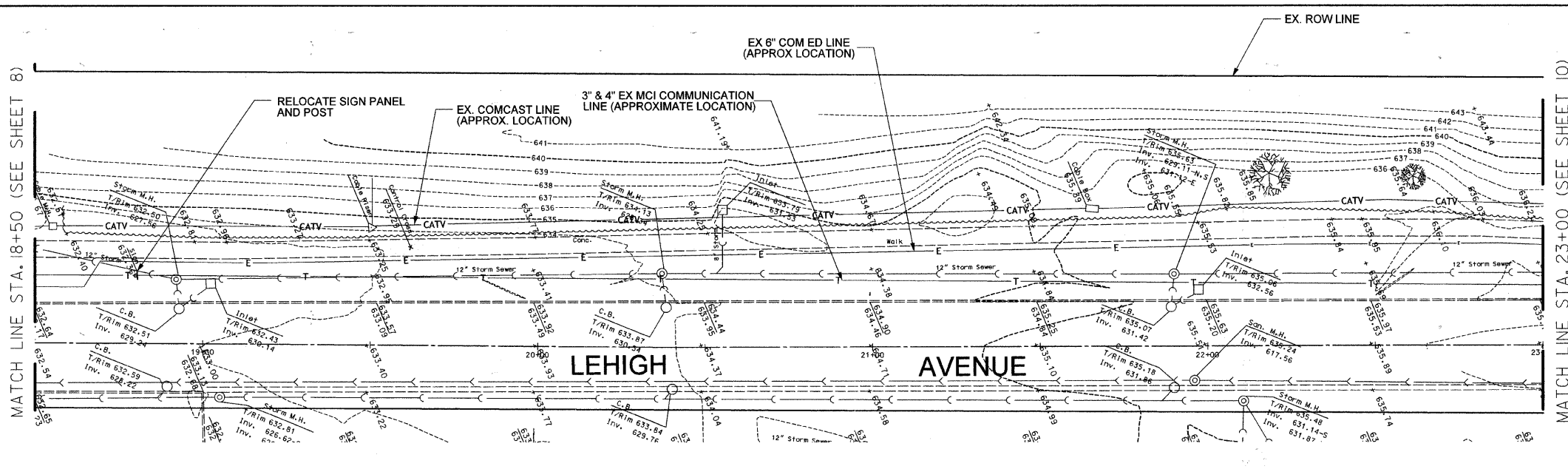
FILE NAME =	USER NAME = #USER#	DESIGNED RH	REVISED -	STATE OF ILLINOIS DEPARTMENT OF TRANSPORTATION	PLAN AND PROFILE - STA. 9+50 TO 13+50 TECHNY TRAIL - SEGMENT 3 BIKE PATH			F.A. RTE.	SECTION	COUNTY	TOTAL SHEETS	SHEET NO.
#FILEL#		DRAWN SS	REVISED -					2766	08-00168-00-BT	COOK	18	7
		CHECKED RH	REVISED -					GLENVIEW, ILLINOIS				CONTRACT NO. 63492
		DATE	REVISED -					ILLINOIS FED. AID PROJECT				
				SCALE: 1" = 20'			SHEET NO. 7 OF 18 SHEETS		STA. 9+50 TO STA. 13+50			



SCALE:
HORIZONTAL: 1" = 20'
VERTICAL: 1" = 2'



- STORM SEWER DATA**
- ① CONNECT TO EXISTING MANHOLE BY CORE AND BOOT IN STRUCTURE WALL INV = 625.76
 - ② 15 L.F. 8" PVC SDR-26 STORM SEWER @ 1.60%
 - ③ DRAINAGE STRUCTURE TO BE REMOVED
 - ④ PLUG EXISTING STORM SEWER

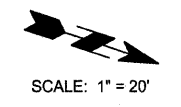


DEMOLITION LEGEND

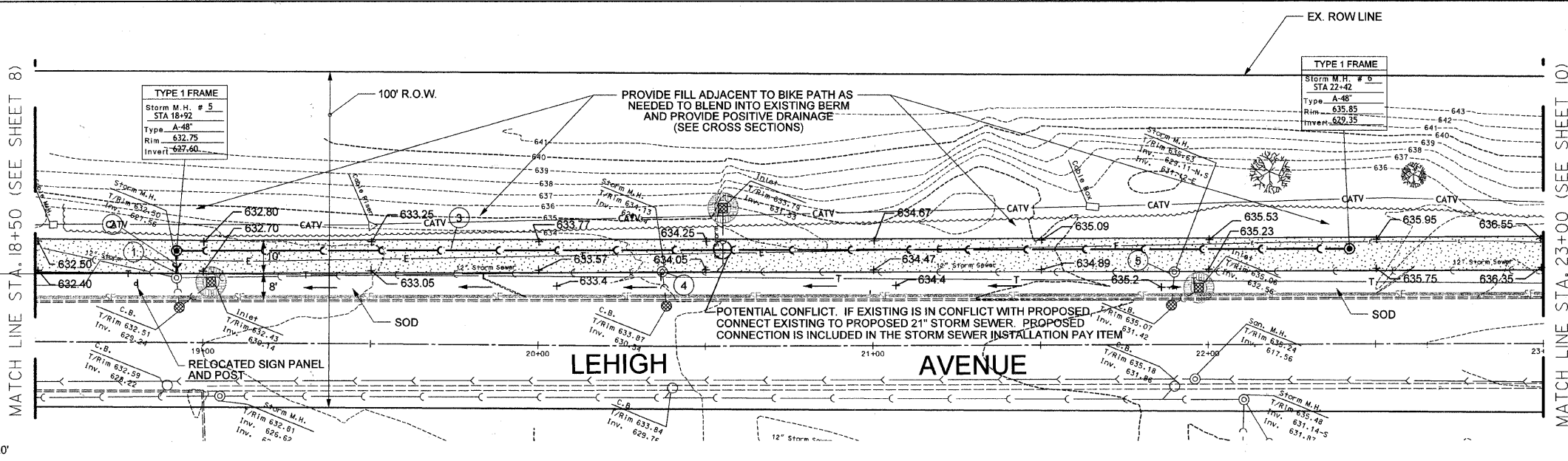


SIDEWALK REMOVAL

EXISTING CONDITIONS AND DEMOLITION



SCALE: 1" = 20'



PAVING LEGEND



PORTLAND CEMENT CONCRETE, 6"



INLET FILTERS



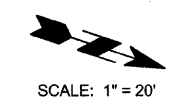
SEDIMENT CONTROL SILT FENCE



ABOVE GRADE INLET FILTER

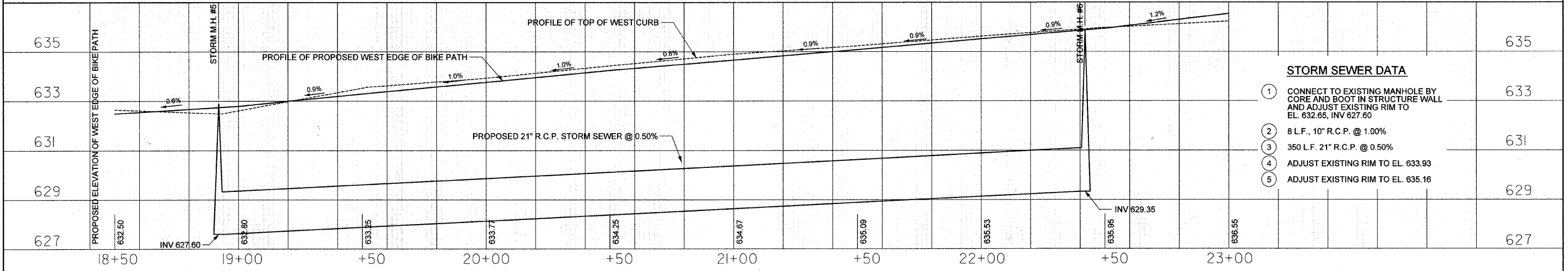
NOTE: CONTRACTOR SHALL LOCATE EXISTING COMED AND OTHER UTILITIES PRIOR TO STORM SEWER INSTALLATION. UTILITY LOCATION AND IF NECESSARY STORM SEWER LOCATION CHANGE IS INCLUDED IN STORM SEWER INSTALLATION PAY ITEM

SITE ENGINEERING PLAN



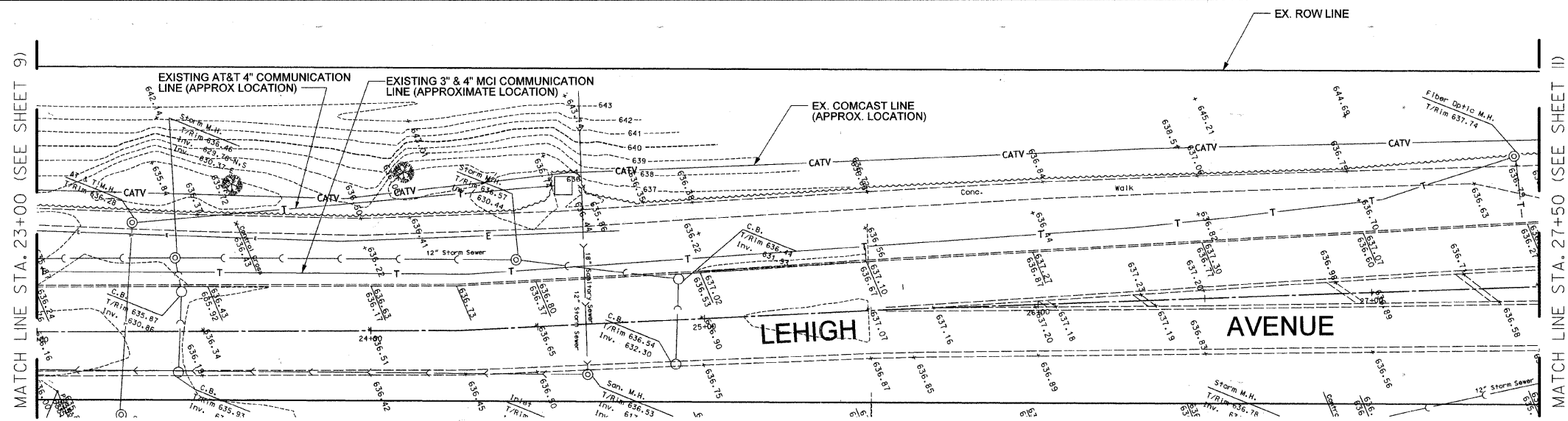
SCALE: 1" = 20'

SCALE:
HORIZONTAL: 1" = 20'
VERTICAL: 1" = 2'



- STORM SEWER DATA**
- CONNECT TO EXISTING MANHOLE BY CORE AND BOOT IN STRUCTURE WALL AND ADJUST EXISTING RIM TO EL. 632.65, INV 627.60
 - 8 L.F., 10" R.C.P. @ 1.00%
 - 350 L.F. 21" R.C.P. @ 0.50%
 - ADJUST EXISTING RIM TO EL. 633.93
 - ADJUST EXISTING RIM TO EL. 635.16

FILE NAME =	USER NAME = #USER#	DESIGNED RA	REVISED -	STATE OF ILLINOIS DEPARTMENT OF TRANSPORTATION	PLAN AND PROFILE - STA. 18+50 TO 23+00 TECHNY TRAIL - SEGMENT 3 BIKE PATH			F.A. RTE.	SECTION	COUNTY	TOTAL SHEETS	SHEET NO.
#FILE#		DRAWN SP	REVISED -		SCALE: 1" = 20'	SHEET NO. 9	OF 17 SHEETS	2766	08-00168-00-BT	COOK	18	9
		CHECKED RA	REVISED -		STA. 18+50	TO STA. 23+00		GLENVIEW, ILLINOIS		CONTRACT NO. 63492		
		DATE	REVISED -					ILLINOIS FED. AID PROJECT				

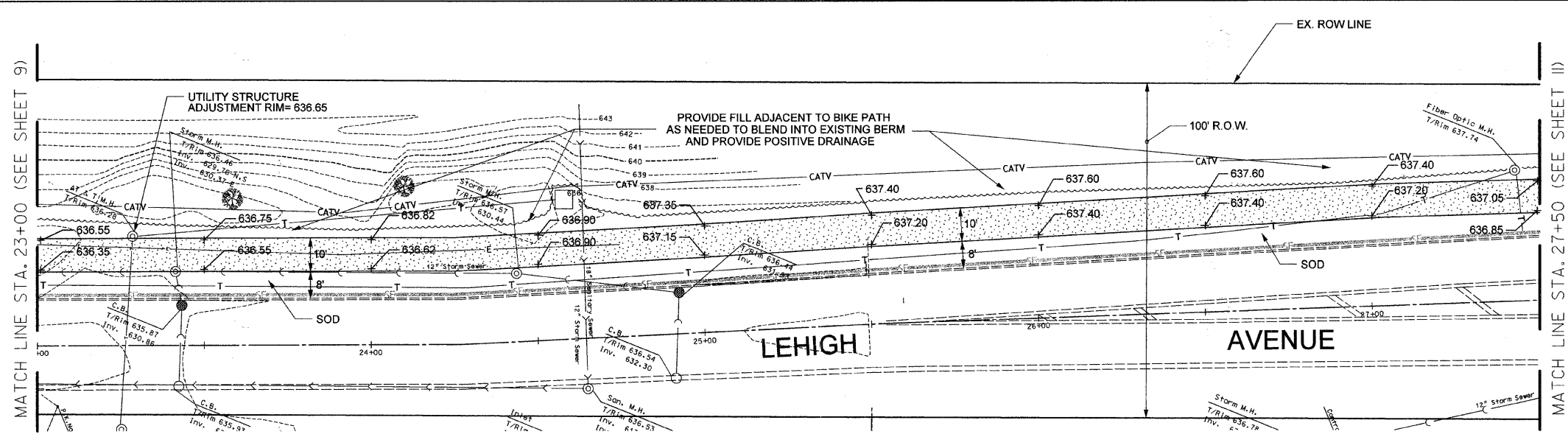


SCALE: 1" = 20'

DEMOLITION LEGEND

□ SIDEWALK REMOVAL

EXISTING CONDITIONS AND DEMOLITION



SCALE: 1" = 20'

PAVING LEGEND

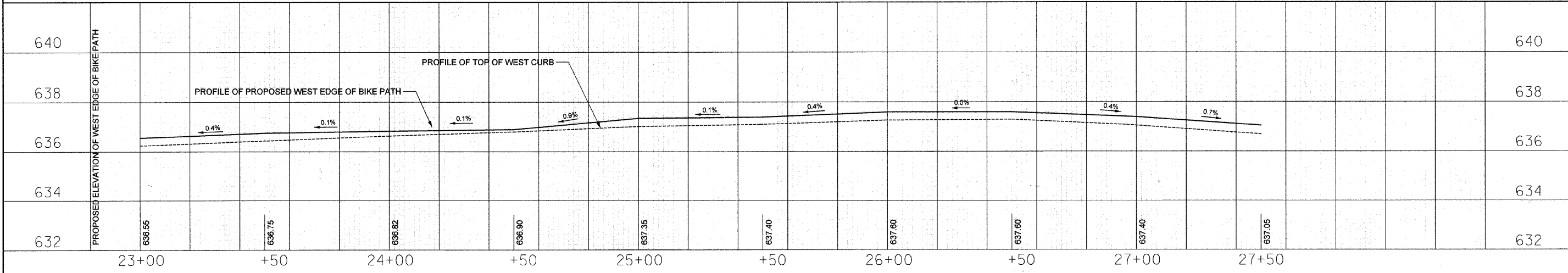
▨ PORTLAND CEMENT CONCRETE, 6"

● INLET FILTERS

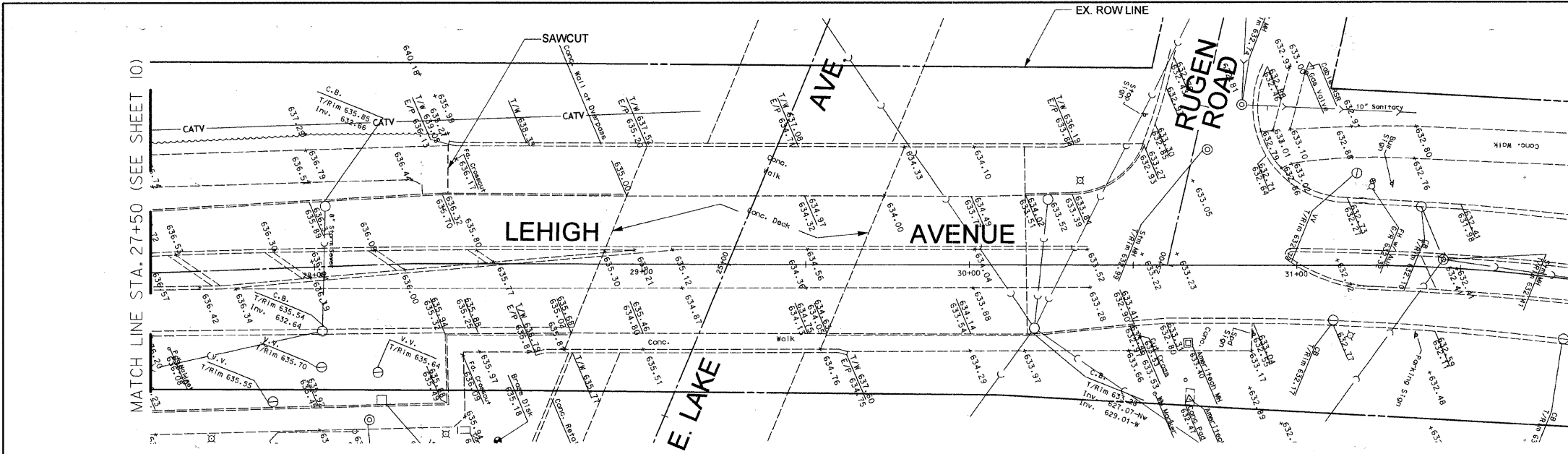
— SEDIMENT CONTROL, SILT FENCE

SITE ENGINEERING PLAN

SCALE:
HORIZONTAL: 1" = 20'
VERTICAL: 1" = 2'



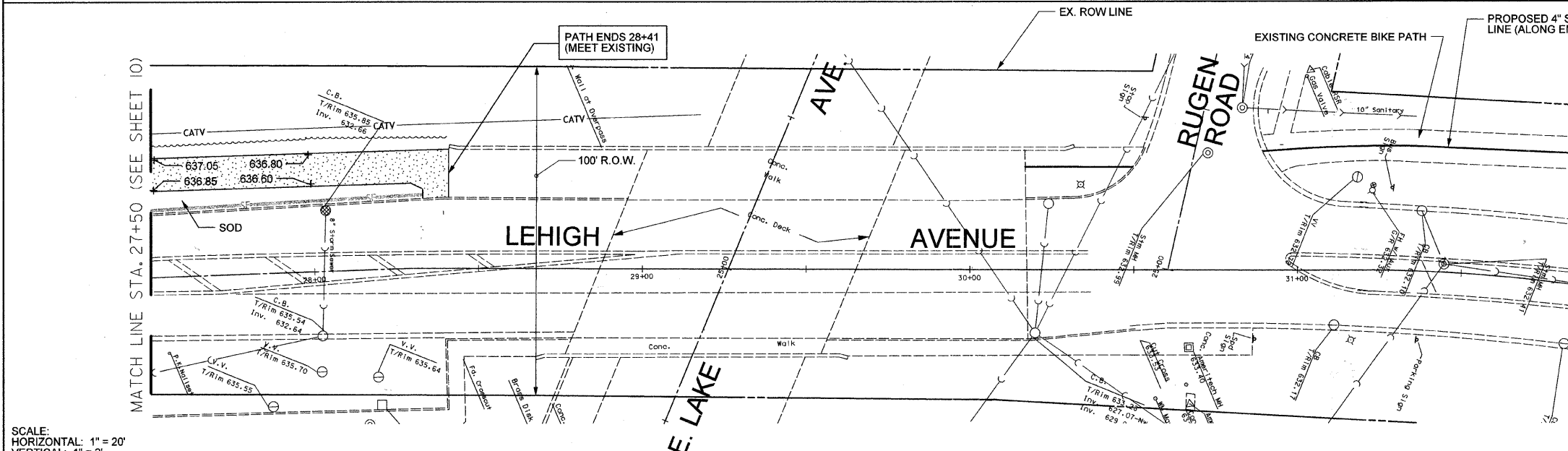
FILE NAME =	USER NAME = #USER#	DESIGNED RA	REVISED -	STATE OF ILLINOIS DEPARTMENT OF TRANSPORTATION	PLAN AND PROFILE - STA. 23+00 TO 27+50 TECHNY TRAIL - SEGMENT 3 BIKE PATH	F.A. RTE.	SECTION	COUNTY	TOTAL SHEETS	SHEET NO.	
#FILE#		DRAWN SP	REVISED -			2766	08-00168-00-BT	COOK	18	10	
		CHECKED RA	REVISED -			GLENVIEW, ILLINOIS CONTRACT NO. 63492					
		DATE	REVISED -			ILLINOIS FED. AID PROJECT					



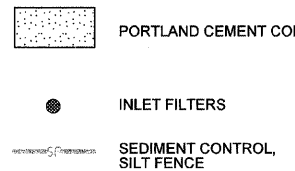
DEMOLITION LEGEND



EXISTING CONDITIONS AND DEMOLITION



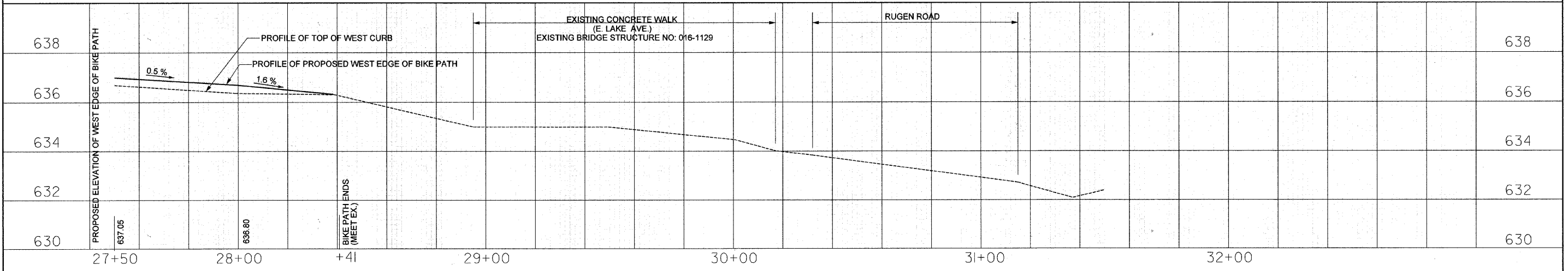
PAVING LEGEND



(FOR PROPOSED STRIPING SEE SHEET 4)

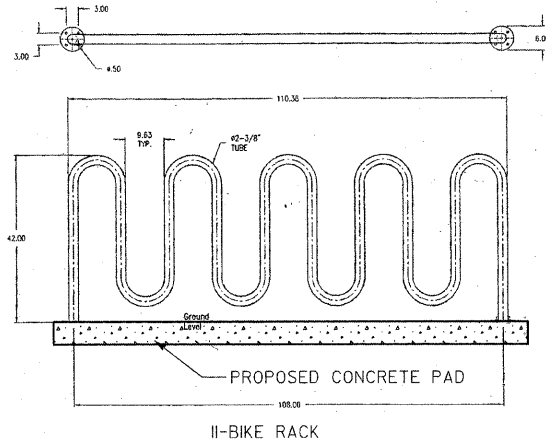
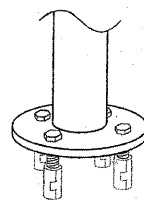
SITE ENGINEERING PLAN

SCALE:
HORIZONTAL: 1" = 20'
VERTICAL: 1" = 2'



FILE NAME =	USER NAME = #USER#	DESIGNED RH	REVISED -	STATE OF ILLINOIS DEPARTMENT OF TRANSPORTATION	PLAN AND PROFILE - STA. 27+50 TO 32+00 TECHNY TRAIL - SEGMENT 3 BIKE PATH	F.A. RTE.	SECTION	COUNTY	TOTAL SHEETS	SHEET NO.	
#FILE#		DRAWN SP	REVISED -			2766	08-00168-00-BT	COOK	18	II	
		CHECKED RH	REVISED -			GLENVIEW, ILLINOIS CONTRACT NO. 63492					
		DATE	REVISED -			ILLINOIS FED. AID PROJECT					
				SCALE: 1" = 20'		SHEET NO. II OF 18 SHEETS		STA. 27+50 TO STA. 32+00			

Plate Surface Mount Detail

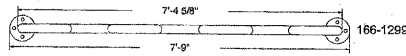


II-BIKE RACK

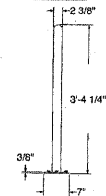
NOTE:
AS MANUFACTURED BY HIGHLAND PRODUCTS GROUP LLC
OR APPROVED EQUAL

BICYCLE RACK - BLACK HEAVY DUTY THERMOPLASTIC COATED WAVE

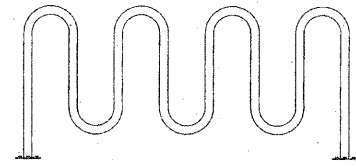
Top view



Side view

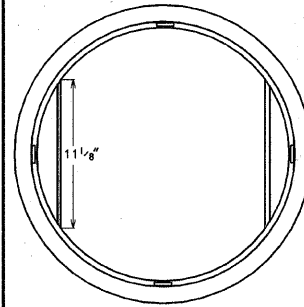


Front view

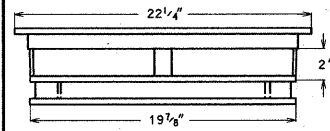
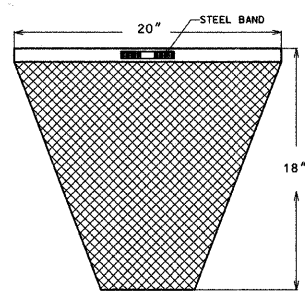


9-BIKE RACK

FRAME - PLAN VIEW



SEDIMENT BAG - SECTION



FRAME - SECTION

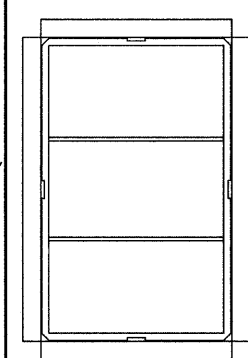
GENERAL NOTES:

FRAME: TOP FLANGE FABRICATED FROM 1 1/2"x1 1/2"x1/8" ANGLE. BASE RIM FABRICATED FROM 1 1/2"x1/2"x1/8" CHANNEL. HANDLES AND SUSPENSION BRACKETS FABRICATED FROM 1 1/2"x1/4" FLAT STOCK. ALL STEEL CONFORMING TO ASTM-A36.
SEDIMENT BAG: BAG FABRICATED FROM 4 OZ./ SQ.YD. NON-WOVEN POLYPROPYLENE GEOTEXTILE REINFORCED WITH POLYESTER MESH. BAG SECURED TO BASE RIM WITH A STAINLESS STEEL STRAP AND LOCK.
FILTER FOR OTHER SHAPE GRATES SHALL BE APPROVED IN ADVANCE OF PLACEMENT BY VILLAGE ENGINEERING.

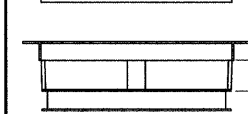
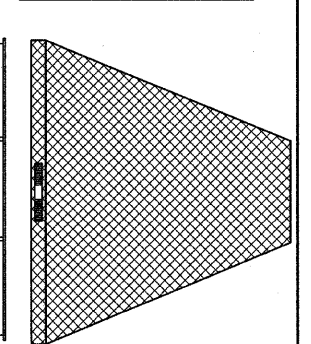
REVISED:01-01-09

NOT TO SCALE
FILTER FOR ROUND
OPEN (TYPE 1)
GRATE & FRAME DETAIL

FRAME - PLAN VIEW



SEDIMENT BAG - SECTION



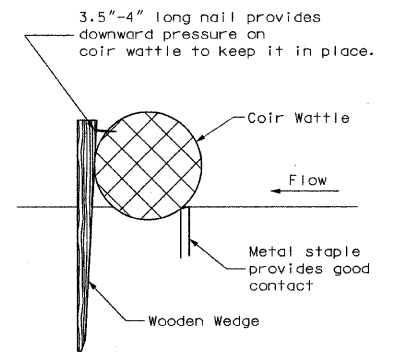
FABRIC FLAP TO COVER CURB BOX

GENERAL NOTES:

FRAME: TOP FLANGE FABRICATED FROM 1 1/2"x1 1/2"x1/8" ANGLE. BASE RIM FABRICATED FROM 1 1/2"x1/2"x1/8" CHANNEL. HANDLES AND SUSPENSION BRACKETS FABRICATED FROM 1 1/2"x1/4" FLAT STOCK. ALL STEEL CONFORMING TO ASTM-A36.
SEDIMENT BAG: BAG FABRICATED FROM 4 OZ./ SQ.YD. NON-WOVEN POLYPROPYLENE GEOTEXTILE REINFORCED WITH POLYESTER MESH. BAG SECURED TO BASE RIM WITH A STAINLESS STEEL STRAP AND LOCK.

NOT TO SCALE
REVISED:01-01-09

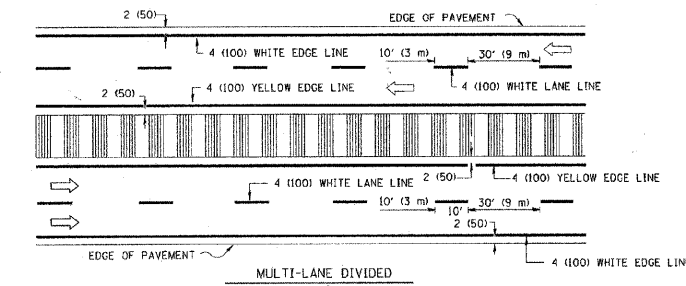
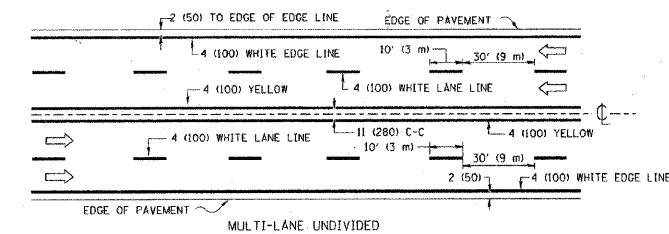
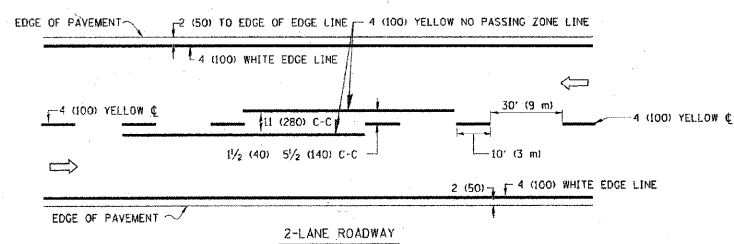
TYPICAL
CURB BOX
CATCH-ALL



ABOVE GRADE INLET PROTECTION
COIR WATTLE

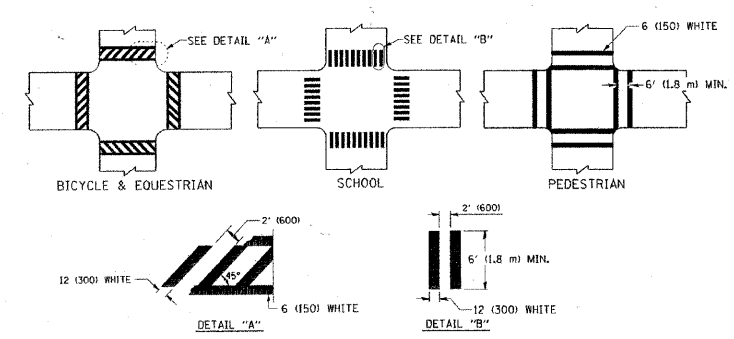
COCONUT FIBER ROLLED PRODUCT
FOR INLET SEDIMENT CONTROL

FILE NAME =	USER NAME = #USER#	DESIGNED RM, MT	REVISIONS	STATE OF ILLINOIS DEPARTMENT OF TRANSPORTATION	DETAILS			F.A. RTE.	SECTION	COUNTY	TOTAL SHEETS	SHEET NO.
#FILE#		DRAWN JP, JJ	REVISIONS		TECHNY TRAIL - SEGMENT 3 BIKE PATH	2766	08-00168-00-BT	COOK	18	13		
	PLOT SCALE = 1" = 20'	CHECKED DAC	REVISIONS		SCALE: N.T.S.	SHEET NO. 13 OF 18 SHEETS STA. TO STA.			GLENVIEW, ILLINOIS CONTRACT NO. 63492			
	PLOT DATE = 6/28/2010	DATE	REVISIONS		ILLINOIS FED. AID PROJECT							

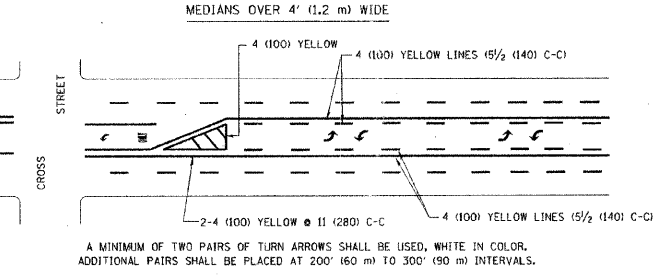
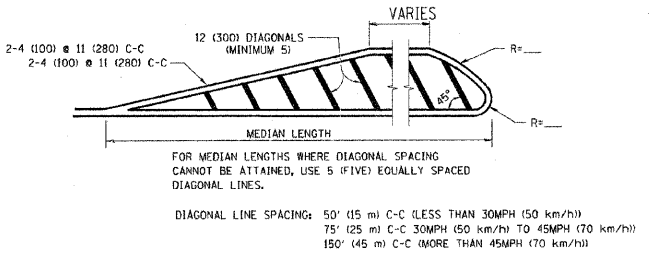
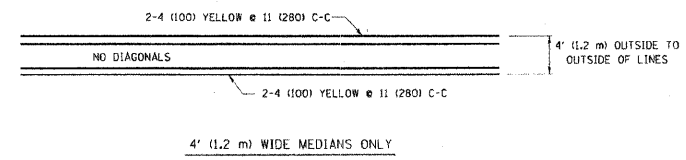


NOTE: MEDIANS WITH BARRIER CURB DO NOT REQUIRE AN EDGE LINE

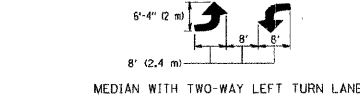
TYPICAL LANE AND EDGE LINE MARKING



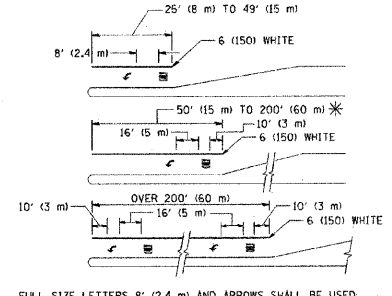
TYPICAL CROSSWALK MARKING



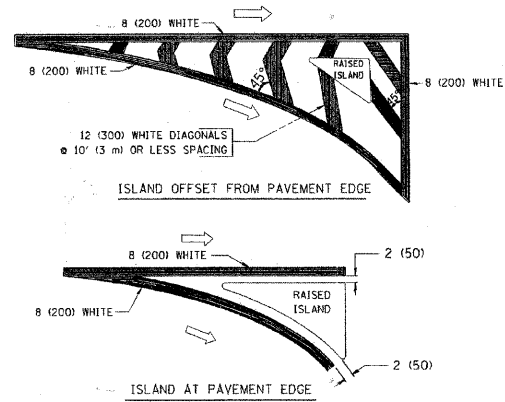
TYPICAL PAINTED MEDIAN MARKING



TYPICAL TURN LANE MARKING



TYPICAL LEFT (OR RIGHT) TURN LANE



TYPICAL ISLAND MARKING

TYPE OF MARKING	WIDTH OF LINE	PATTERN	COLOR	SPACING / REMARKS
CENTERLINE ON 2 LANE PAVEMENT	4 (100)	SKIP-DASH	YELLOW	10' (3 m) LINE WITH 30' (9 m) SPACE
CENTERLINE ON MULTI-LANE UNDIVIDED PAVEMENT	2 @ 4 (100)	SOLID	YELLOW	11 (280) C-C
NO PASSING ZONE LINES FOR ONE DIRECTION FOR BOTH DIRECTIONS	4 (100) 2 @ 4 (100)	SOLID SOLID	YELLOW YELLOW	5/2 (140) C-C FROM SKIP-DASH CENTERLINE 11 (280) C-C OMIT SKIP-DASH CENTERLINE BETWEEN
LANE LINES	4 (100) 5 (125) ON FREEWAYS	SKIP-DASH SKIP-DASH	WHITE WHITE	10' (3 m) LINE WITH 30' (9 m) SPACE
DOTTED LINES (EXTENSIONS OF CENTER, LANE OR TURN LANE MARKINGS)	SAME AS LINE BEING EXTENDED	SKIP-DASH	SAME AS LINE BEING EXTENDED	2' (600) LINE WITH 6' (1.8 m) SPACE
EDGE LINES	4 (100)	SOLID	YELLOW-LEFT WHITE-RIGHT	OUTLINE MOUNTABLE MEDIANS IN YELLOW. EDGE LINES ARE NOT USED NEXT TO BARRIER CURB
TURN LANE MARKINGS	6 (150) LINE; FULL SIZE LETTERS & SYMBOLS (8" (2.4m))	SOLID	WHITE	SEE TYPICAL TURN LANE MARKING DETAIL
TWO WAY LEFT TURN MARKING	2 @ 4 (100) EACH DIRECTION 8' (2.4m) LEFT ARROW	SKIP-DASH AND SOLID IN PAIRS	YELLOW WHITE	10' (3 m) LINE WITH 30' (9 m) SPACE FOR SKIP-DASH; 5/2 (140) C-C BETWEEN SOLID LINE AND SKIP-DASH LINE SEE TYPICAL TWO-WAY LEFT TURN MARKING DETAIL
CROSSWALK LINES (PEDESTRIAN) A. DIAGONALS (BIKE & EQUESTRIAN) B. LONGITUDINAL BARS (SCHOOL)	2 @ 6 (150) 12 (300) @ 45° 12 (300) @ 90°	SOLID SOLID SOLID	WHITE WHITE WHITE	NOT LESS THAN 6' (1.8 m) APART 2' (600) APART SEE TYPICAL CROSSWALK MARKING DETAILS.
STOP LINES	24 (600)	SOLID	WHITE	PLACE 4' (1.2 m) IN ADVANCE OF AND PARALLEL TO CROSSWALK, IF PRESENT. OTHERWISE, PLACE AT DESIRED STOPPING POINT, PARALLEL TO CROSSROAD CENTERLINE, WHERE POSSIBLE
PAINTED MEDIANS	2 @ 4 (100) WITH 12 (300) DIAGONALS @ 45° NO DIAGONALS USED FOR 4' (1.2 m) WIDE MEDIANS	SOLID	YELLOW; TWO WAY TRAFFIC WHITE; ONE WAY TRAFFIC	11 (280) C-C FOR THE DOUBLE LINE SEE TYPICAL PAINTED MEDIAN MARKING.
GORE MARKING AND CHANNELIZING LINES	8 (200) WITH 12 (300) DIAGONALS @ 45°	SOLID	WHITE	DIAGONALS: 15' (4.5 m) C-C (LESS THAN 30MPH (50 km/h)) 20' (6 m) C-C (30MPH (50 km/h) TO 45MPH (70 km/h)) 30' (9 m) C-C (OVER 45MPH (70 km/h))
RAILROAD CROSSING	24 (600) TRANSVERSE LINES; "RR" IS 6' (1.8 m) LETTERS; 16 (400) LINE FOR "X"	SOLID	WHITE	SEE STATE STANDARD 780001 AREA OF "X" - 3.6 SQ. FT. (0.33 m²) EACH "X" - 54.0 SQ. FT. (5.0 m²)
SHOULDER DIAGONALS	12 (300) @ 45°	SOLID	WHITE - RIGHT YELLOW - LEFT	50' (15 m) C-C (LESS THAN 30MPH (50 km/h)) 75' (25 m) C-C (30 MPH (50 km/h) TO 45MPH (70 km/h)) 150' (45 m) C-C (OVER 45MPH (70 km/h))

FOR FURTHER DETAILS ON PAVEMENT MARKING REFER TO STANDARD SPECIFICATIONS FOR ROAD AND BRIDGE CONSTRUCTION AND STATE STANDARD 780001.

All dimensions are in inches (millimeters) unless otherwise shown.

FILE NAME =	USER NAME = drivokasgn	DESIGNED - EVERS	REVISED - T. RAMMACHER 10-27-94
ct:\pwwork\pavedot\drivokasgn\01031515\3.dgn		DRAWN -	REVISED - C. JUCIUS 09-09-09
	PLOT SCALE = 1/8" = 1'	CHECKED -	REVISED -
	PLOT DATE = 9/9/2009	DATE - 03-19-90	REVISED -

STATE OF ILLINOIS
DEPARTMENT OF TRANSPORTATION

DISTRICT ONE TYPICAL PAVEMENT MARKINGS			
SCALE: NONE	SHEET NO. 1 OF 1 SHEETS	STA. TO STA.	

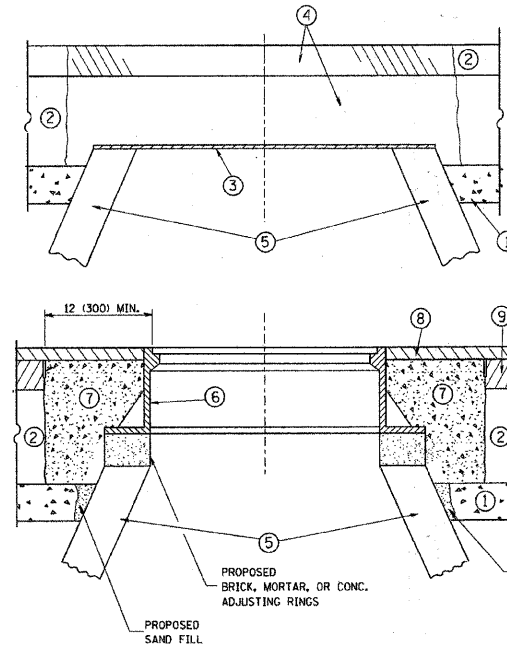
F.A. RTE.	SECTION	COUNTY	TOTAL SHEETS	SHEET NO.
	TC-13			
FED. ROAD DIST. NO. 1		ILLINOIS FED. AID PROJECT		

FILE NAME = #FILEL#	USER NAME = #USER#	DESIGNED RH. MT	REVISED -
		DRAWN JP. JJ	REVISED -
	PLOT SCALE = 1" = 20'	CHECKED DAC	REVISED -
	PLOT DATE = 6/28/2010	DATE	REVISED -

STATE OF ILLINOIS
DEPARTMENT OF TRANSPORTATION

TC-13 DISTRICT ONE TYPICAL PAVEMENT MARKINGS TECHNY TRAIL - SEGMENT 3 BIKE PATH			
SCALE: N.T.S.	SHEET NO. 14 OF 18 SHEETS	STA. TO STA.	

F.A. RTE.	SECTION	COUNTY	TOTAL SHEETS	SHEET NO.
2766	08-00168-00-BT	COOK	18	14
GLENVIEW, ILLINOIS		CONTRACT NO. 63492		
ILLINOIS FED. AID PROJECT				



CONSTRUCTION PROCEDURES

- STAGE 1 (BEFORE PAVEMENT MILLING)**
- A) REMOVE A MINIMUM OF 12 (300) OF THE PAVEMENT FROM AROUND THE STRUCTURE.
 - B) REMOVE THE EXISTING FRAME AND LID FROM THE STRUCTURE.
 - C) COVER THE STRUCTURE OPENING WITH A 36 (900) DIAMETER METAL PLATE.
 - D) BACKFILL WITH CRUSHED STONE AND A MINIMUM 1 1/2 (40) THICK HMA SURFACE MIX APPROVED BY THE ENGINEER.
- STAGE 2 (AFTER PAVEMENT MILLING)**
- A) REMOVE THE HMA SURFACE MIX AND CRUSHED STONE.
 - B) INSTALL THE FRAME AND LID; ADJUST THE FRAME TO ITS FINAL SURFACE ELEVATION.
 - C) THE SURROUNDING SPACE SHALL BE FILLED WITH CLASS S1 CONCRETE, OR HMA SURFACE COURSE OR HMA BINDER COURSE TO THE ELEVATION OF THE SURFACE OF THE EXISTING BASE COURSE OR THE BINDER COURSE.

THE PROCEDURE EXPLAINED ABOVE SHALL CONFORM TO THE APPLICABLE PORTIONS OF SECTIONS 353, 406, 602, AND 603 OF THE STANDARD SPECIFICATIONS.

NOTES:

EXISTING BROKEN FRAMES AND LIDS SHALL BE REMOVED AND DISPOSED OF BY THE CONTRACTOR AND SHALL BE REPLACED AS DIRECTED BY THE ENGINEER. REPLACEMENT FRAMES AND LIDS WILL BE PAID FOR IN ACCORDANCE WITH ARTICLE 109.04 OF THE STANDARD SPECIFICATIONS UNLESS A SEPARATE PAY ITEM HAS BEEN PROVIDED.

IF THE EXISTING LIDS ARE OPEN, THE FRAME WILL BE ADJUSTED TO THE ELEVATION OF THE MILLED PAVEMENT SURFACE PRIOR TO THE MILLING OPERATION. THE FRAME WILL NOT BE REMOVED AND COVERED BY THE METAL PLATE.

CITY OF CHICAGO CASTINGS ARE THE PROPERTY OF THE CITY AND THE CONTRACTOR SHALL NOTIFY THE CITY FOR REMOVAL AND DISPOSITION OF THE CASTINGS.

THE METAL PLATE USED TO COVER THE STRUCTURE SHALL REMAIN THE PROPERTY OF THE CONTRACTOR.

WHEN STRUCTURES ARE TO BE ADJUSTED OR RECONSTRUCTED, THE LOWERING AND RAISING OF THE FRAMES AND LIDS WILL NOT BE PAID FOR SEPARATELY BUT WILL BE INCLUDED IN THE COST OF THE CORRESPONDING PAY ITEM.

LEGEND

- ① SUB-BASE GRANULAR MATERIAL
- ② EXISTING PAVEMENT
- ③ 36 (900) DIAMETER METAL PLATE
- ④ PROPOSED CRUSHED STONE AND HMA SURFACE MIX
- ⑤ EXISTING STRUCTURE
- ⑥ FRAME AND LID (SEE NOTES)
- ⑦ CLASS S1 CONCRETE, HMA SURFACE COURSE OR HMA BINDER COURSE
- ⑧ PROPOSED HMA SURFACE COURSE
- ⑨ PROPOSED HMA BINDER COURSE

LOCATION OF STRUCTURES:

THE CONTRACTOR WILL BE REQUIRED TO KEEP A RECORD OF THE LOCATIONS OF THE BURIED STRUCTURES ACCORDING TO THE STATION AND DISTANCE LEFT OR RIGHT OF THE CENTERLINE OF PAVEMENT. UPON COMPLETION OF THE WORK, THE CONTRACTOR WILL DELIVER THE RECORD TO THE ENGINEER.

BASIS OF PAYMENT: THIS WORK WILL BE PAID FOR AT THE CONTRACT UNIT PRICE PER EACH FOR "FRAMES AND LIDS TO BE ADJUSTED, SPECIAL"

NEW FRAMES AND LIDS, WHEN SPECIFIED, WILL BE PAID FOR SEPARATELY.

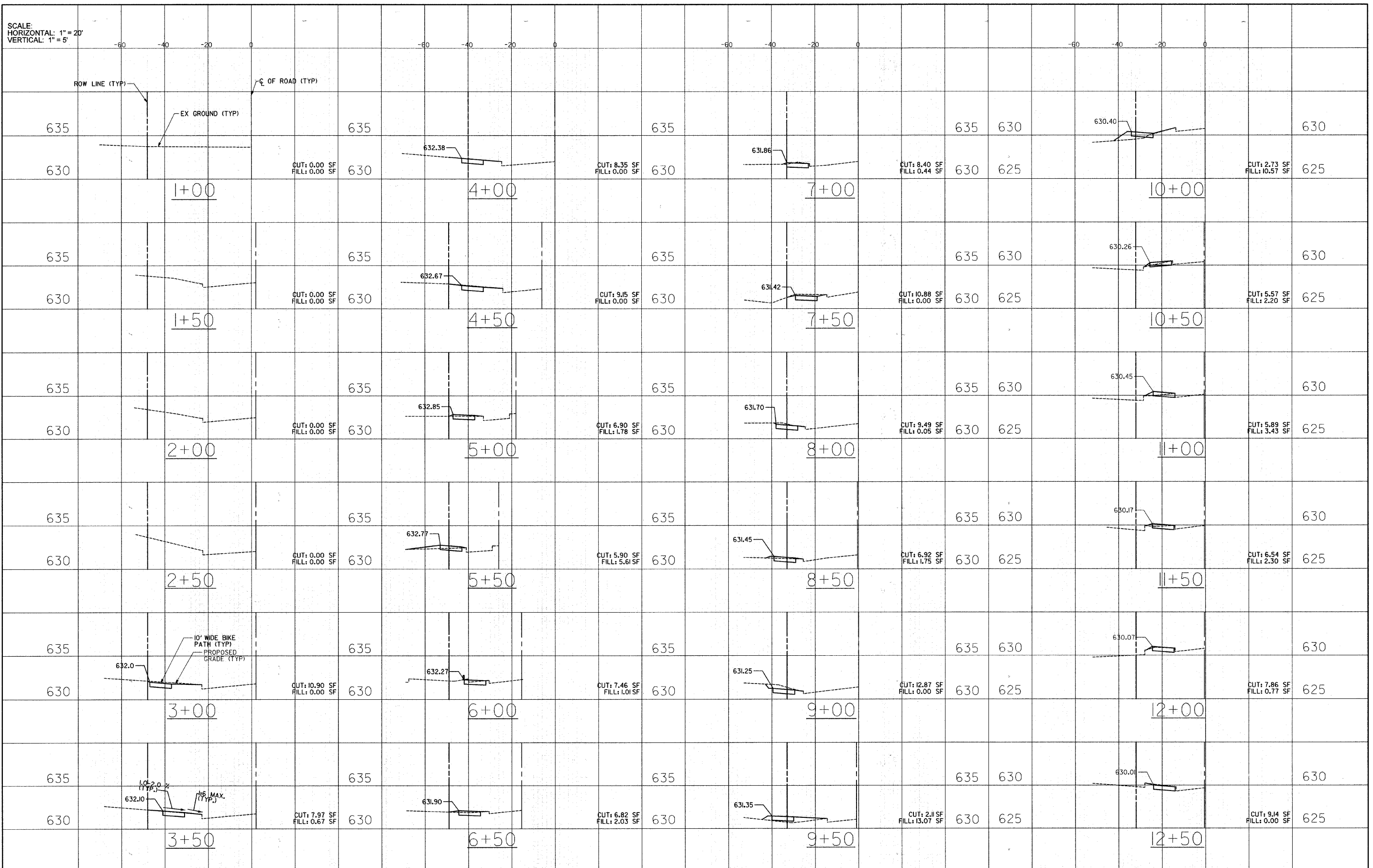
DETAILS FOR FRAMES AND LIDS ADJUSTMENT WITH MILLING

ALL DIMENSIONS ARE IN INCHES (MILLIMETERS) UNLESS OTHERWISE SHOWN

FILE NAME = W:\distr\22-34\ba08.dgn	USER NAME = gegl@obts	DESIGNED - R. SHAM	REVISED - R. SHAM 03-10-95	STATE OF ILLINOIS DEPARTMENT OF TRANSPORTATION	DETAILS FOR FRAMES AND LIDS ADJUSTMENT WITH MILLING		F.A. RTE.	SECTION	COUNTY	TOTAL SHEETS	SHEET NO.	
		DRAWN -	REVISED - A. ABBAS 03-21-97		SCALE: NONE	SHEET NO. 1 OF 1 SHEETS	STA.	BD600-03 (BD-8)				
		PLOT SCALE = 5/8"=1'-0"	REVISED - R. WIEDEMAN 05-14-04					CONTRACT NO.				
		PLOT DATE = 1/4/2009	REVISED - R. BORO 01-01-07					FED. ROAD DIST. NO. 1 (ILLINOIS) FED. AID PROJECT				

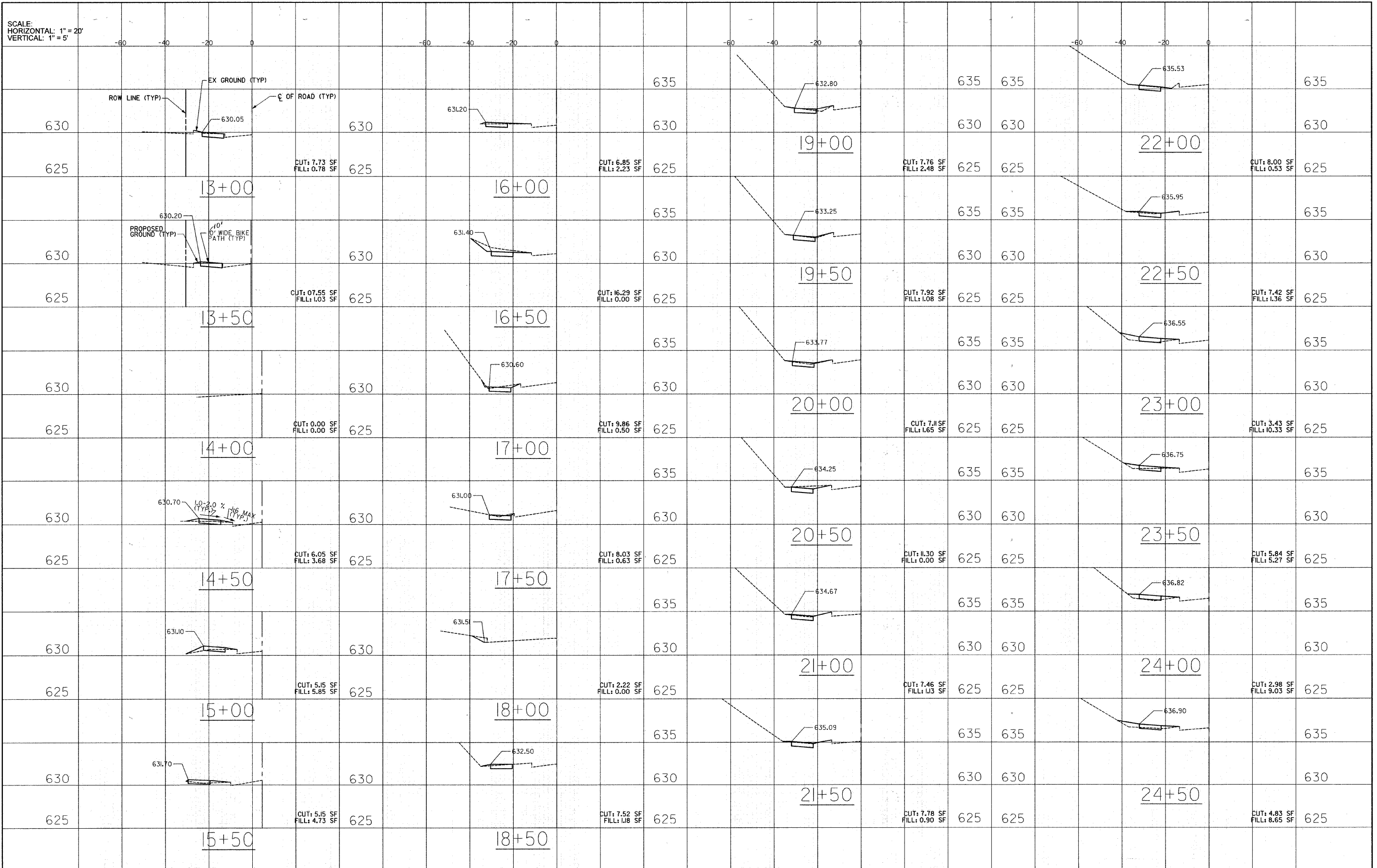
FILE NAME = #FILEL#	USER NAME = #USER#	DESIGNED RM. MT	REVISED -	STATE OF ILLINOIS DEPARTMENT OF TRANSPORTATION	TC-13 DISTRICT ONE TYPICAL PAVEMENT MARKINGS TECHNY TRAIL - SEGMENT 3 BIKE PATH		F.A. RTE.	SECTION	COUNTY	TOTAL SHEETS	SHEET NO.	
		DRAWN JP. JJ	REVISED -		SCALE: N.T.S.	SHEET NO. 15 OF 18 SHEETS	STA.	2766	08-00168-00-BT	COOK	18	15
		CHECKED DMC	REVISED -					GLENVIEW, ILLINOIS				
		DATE	REVISED -					ILLINOIS FED. AID PROJECT				

SCALE:
HORIZONTAL: 1" = 20'
VERTICAL: 1" = 5'



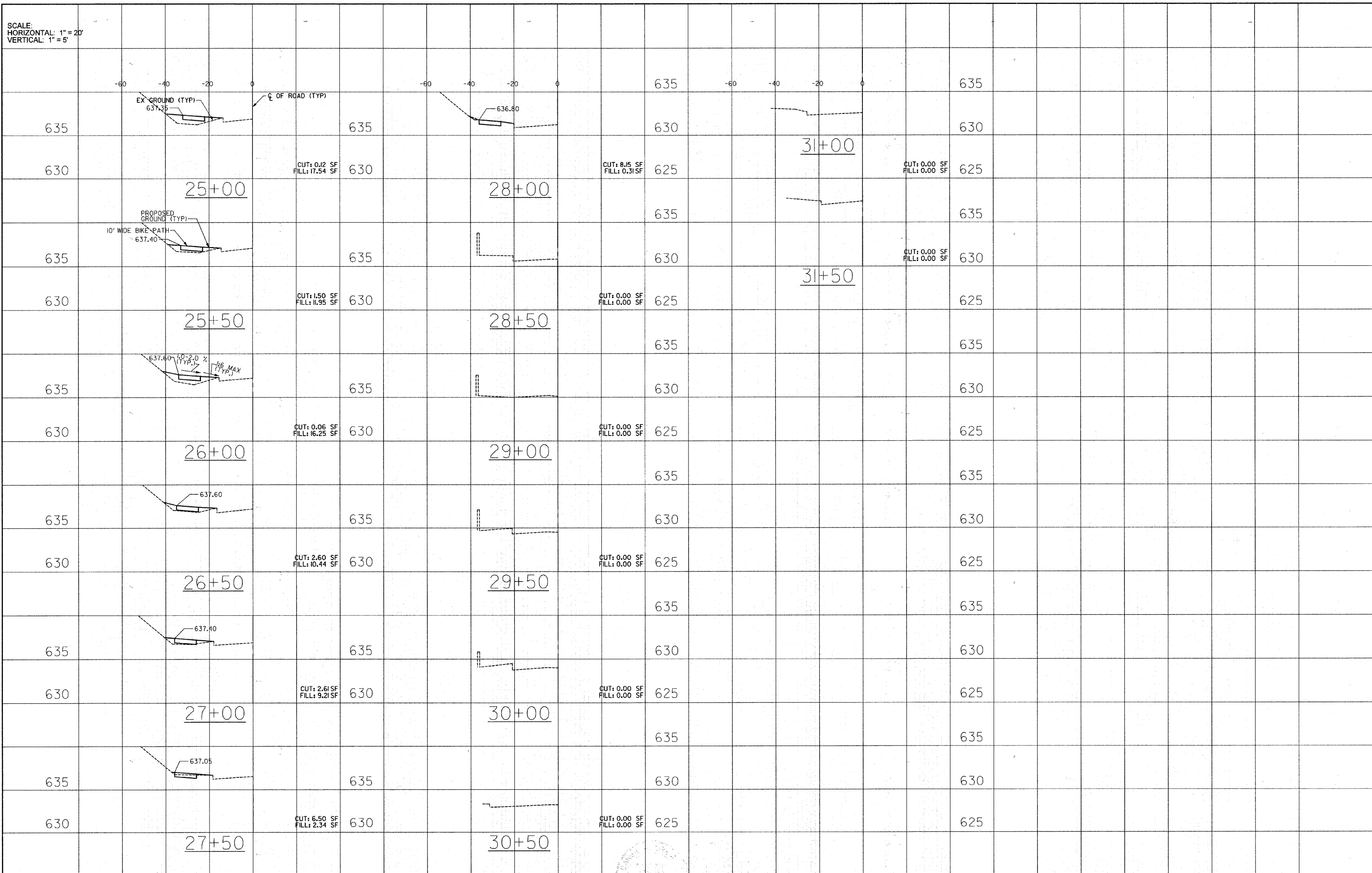
FILE NAME =	USER NAME = *USER*	DESIGNED RM, MT	REVISED -	STATE OF ILLINOIS DEPARTMENT OF TRANSPORTATION	CROSS SECTIONS - STA. 1+00 TO 12+50 TECHNY TRAIL - SEGMENT 3 BIKE PATH		F.A. RTE. 2766	SECTION 08-00168-00-BT	COUNTY COOK	TOTAL SHEETS 18	SHEET NO. 16
*FILEL#	PLOT SCALE = 1" = 20'	DRAWN JP, JJ	REVISED -		SCALE:	SHEET NO. 16 OF 18 SHEETS	STA. 1+00	GLENVIEW, ILLINOIS		CONTRACT NO. 63492	
	PLOT DATE = 6/28/2010	CHECKED BWC	REVISED -				TO STA. 12+50	ILLINOIS FED. AID PROJECT			
		DATE	REVISED -								

SCALE:
HORIZONTAL: 1" = 20'
VERTICAL: 1" = 5'



FILE NAME =	USER NAME = *USER*	DESIGNED RM, MT	REVISED -	STATE OF ILLINOIS DEPARTMENT OF TRANSPORTATION	CROSS SECTIONS - STA. 13+00 TO 24+50 TECHNY TRAIL - SEGMENT 3 BIKE PATH			F.A. RTE.	SECTION	COUNTY	TOTAL SHEETS	SHEET NO.		
#FILE#		DRAWN SP, JJ	REVISED -		SCALE:	SHEET NO. 17	OF 18 SHEETS	STA. 13+00	TO STA. 24+50	2766	08-00168-00-BT	COOK	18	17
	PLOT SCALE = 1" = 20'	CHECKED DMC	REVISED -								GLENVIEW, ILLINOIS	CONTRACT NO. 63492		
	PLOT DATE = 6/28/2010	DATE	REVISED -								ILLINOIS FED. AID PROJECT			

SCALE:
HORIZONTAL: 1" = 20'
VERTICAL: 1" = 5'



FILE NAME =	USER NAME = #USER#	DESIGNED RA, MY	REVISED -	STATE OF ILLINOIS DEPARTMENT OF TRANSPORTATION	CROSS SECTIONS - STA. 25+00 TO 31+50 TECHNY TRAIL - SEGMENT 3 BIKE PATH				F.A. RTE.	SECTION	COUNTY	TOTAL SHEETS	SHEET NO.
#FILE#		DRAWN SP, JJ	REVISED -		2766	08-00168-00-BT	COOK	18	18				
	PLOT SCALE = 1" = 20'	CHECKED DAC	REVISED -		SCALE: SHEET NO. 18 OF 18 SHEETS STA. 25+00 TO STA. 31+50				GLENVIEW, ILLINOIS CONTRACT NO. 63492				
	PLOT DATE = 6/28/2010	DATE	REVISED -		ILLINOIS FED. AID PROJECT								