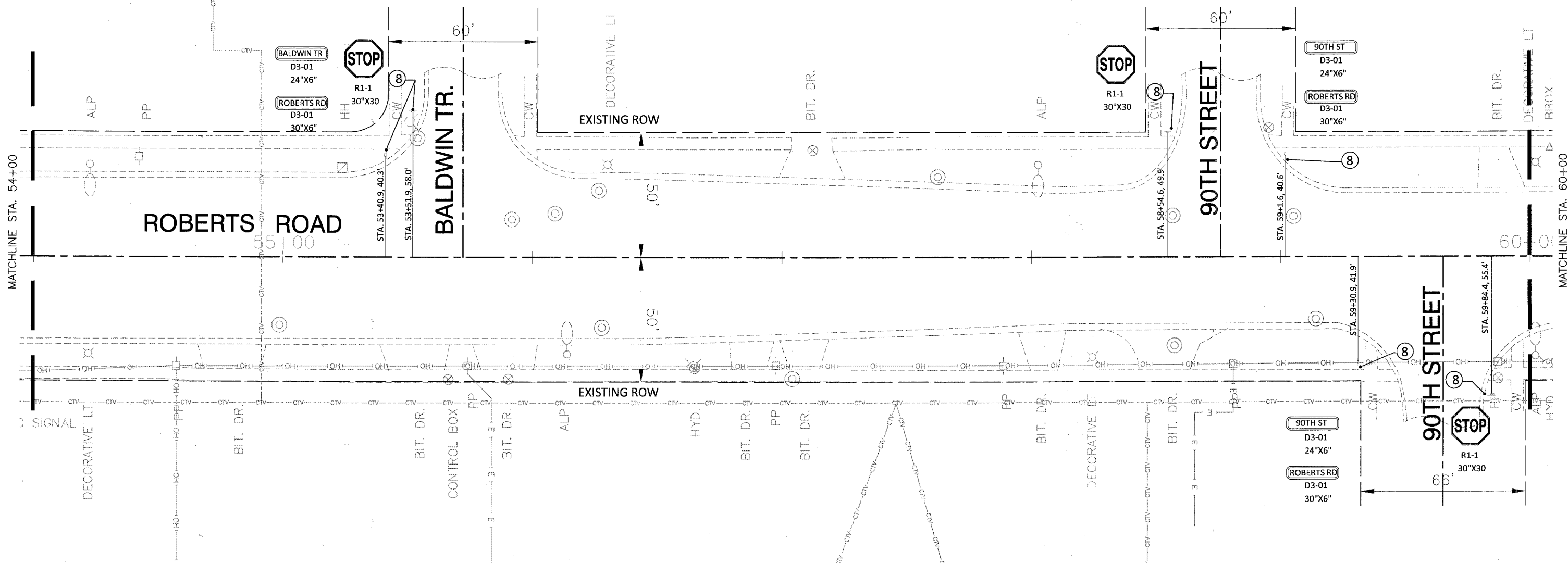


SECTION 2, TOWNSHIP 37, RANGE 12  
SECTION 11, TOWNSHIP 37, RANGE 12

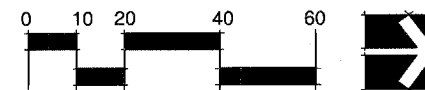


**DEMOLITION PLAN NOTES:**

1. SIDEWALK REMOVAL.
2. COMBINATION CURB AND GUTTER REMOVAL
3. EARTH EXCAVATION.
4. SOD STRIPPING, 2" DEPTH
5. MANHOLE TO BE ADJUSTED.
6. VALVE BOX TO BE ADJUSTED.
7. CONCRETE MEDIAN SURFACE REMOVAL
8. REMOVE SIGN PANEL ASSEMBLY - TYPE A OR TYPE B, REMOVE SIGN PANEL- TYPE 1 - ALL EXISTING SIGN PANELS TO BE REMOVED AND CLEANED. SEE DETAIL 4, SHEET 33, THE SIGN SCHEDULE AND PLANS.
9. REMOVE SIGN PANEL - TYPE 1 - SIGNS ATTACHED TO LIGHTPOLES AND TRAFFIC POSTS TO BE REMOVED AND CLEANED. SEE DETAIL 4, SHEET 33 THE SIGN SCHEDULE AND PLANS.

**LEGEND**

- SIDEWALK REMOVAL
- COMBINATION CURB AND GUTTER REMOVAL
- EARTH EXCAVATION.
- SOD STRIPPING, 2" DEPTH
- CONCRETE MEDIAN SURFACE REMOVAL
- EXISTING SIGN MOUNTED ON SINGLE POLE
- EXISTING SIGN MOUNTED ON TWO POLES
- EXISTING SIGN MOUNTED ON LIGHT POLE OR TRAFFIC POLE



• SITE SURVEY PROVIDED BY:  
ROBINSON ENGINEERING, INC.  
17000 South Park Avenue  
South Holland, Illinois 60473  
(708) 331-6700

\*\* SEE ALSO DEMOLITION PLAN GENERAL NOTES SHEET 2

FILE NAME = pri existing conditions - 14

USER NAME =	DESIGNED -- BCL	REVISED --
	CHECKED -- KLG	REVISED --
PLOT SCALE = 1"=20'	DRAWN -- BCL/RJA	REVISED --
PLOT DATE =	CHECKED -- KLG	REVISED --

STATE OF ILLINOIS  
DEPARTMENT OF TRANSPORTATION

EXISTING CONDITIONS/ DEMOLITION PLAN

SCALE: 1"=20' SHEET NO. 14 OF 35 SHEETS STA. 54+00 TO STA. 60+00

F.A.U. RTE.	SECTION	COUNTY	TOTAL SHEETS	SHEET NO.
2757	10-00062-00-LS	COOK	35	14
CONTRACT NO. 63494				
FED. ROAD DIST. NO. 1 ILLINOIS FED. AID PROJECT ARA-M-9003(664)				

