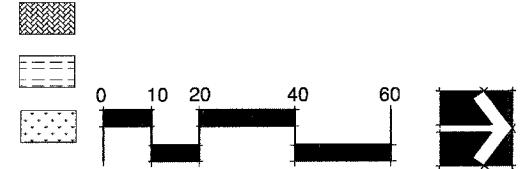


CONSTRUCTION PLAN NOTES:

1. MODULAR CONCRETE PAVERS (SPECIAL), SEE DETAILS 1 & 2, SHEET 33 AND SPECIAL PROVISION. NOTE THAT SOLDIER COURSE SHOWN WITH 8" OFFSET LINE, TYPICAL. MEET EXISTING CONCRETE CURB FLUSH WITH NEW PAVERS. MINIMUM CROSS SLOPE SHALL BE 1%. MEET EXISTING CONCRETE WALK WITH NEW CONC. PAVER PAVEMENT. ALL PAVEMENT TRANSITIONS SHALL BE SMOOTH AND SUBTLE, TYPICAL. ANY ABRUPT CHANGES SHALL BE REPAIRED OR REPLACED BY THE CONTRACTOR AT HIS EXPENSE
2. COMBINATION CONCRETE CURB AND GUTTER, TYPE B-6.18, MATCH EXISTING DIMENSIONS AND PROFILE.
3. DETECTABLE WARNINGS ON SIDEWALK RAMPS IN MODULAR CONCRETE PAVERS (SPECIAL). SEE SPECIAL PROVISION.
4. ORNAMENTAL STREET SIGN POST, COMPLETE. SEE DETAIL 5, SHEET 33 AND SPECIAL PROVISION
5. FURNISHED EXCAVATION.
6. PORTLAND CEMENT CONCRETE SIDEWALK 5 INCH
7. SODDING, SALT TOLERANT
8. RELOCATE SIGN PANEL ASSEMBLY TYPE A OR TYPE B; RELOCATE SIGN PANEL TYPE 1 OR TYPE 2; ORNAMENTAL SIGN POST. SEE DETAIL 4, SHEET 33.
9. RELOCATE SIGN PANEL TYPE 1 OR TYPE 2. SEE DETAIL 4, SHEET 33 AND SPECIAL PROVISION.

LEGEND

- MODULAR CONCRETE PAVERS (SPECIAL)
- COMBINATION CURB AND GUTTER
- SODDING, SALT TOLERANT
- RETROFIT SIGN MOUNTED ON SINGLE POLE
- RETROFIT SIGN MOUNTED ON TWO POLES
- EXISTING SIGN MOUNTED ON LIGHT POLE OR TRAFFIC POLE
- PROPOSED STREET SIGNS ON ORNAMENTAL SIGN POST
- PROPOSED SHADE TREE
- PROPOSED SHRUB
- PROPOSED ORNAMENTAL GRASS
- PROPOSED PERENNIALS



• SITE SURVEY PROVIDED BY:
ROBINSON ENGINEERING, INC.
17000 South Park Avenue
South Holland, Illinois 60473
(708) 331-6700

**** SEE ALSO CONSTRUCTION PLAN GENERAL NOTES SHEET 2

FILE NAME = pri construction plans - 25



USER NAME =	DESIGNED -- BCL	REVISED --
PLOT SCALE = 1"=20'	CHECKED -- KLG	REVISED --
PLOT DATE =	DRAWN -- BCL/RJA	REVISED --
	CHECKED -- KLG	REVISED --

STATE OF ILLINOIS
DEPARTMENT OF TRANSPORTATION

CONSTRUCTION / LANDSCAPE PLAN

SCALE: 1"=20'

SHEET NO. 25 OF 35 SHEETS STA. 36+00 TO STA. 42+00

F.A.U. RTE.	SECTION	COUNTY	TOTAL SHEETS	SHEET NO.
2757	10-00062-00-LS	COOK	35	25
FED. ROAD DIST. NO. 1 ILLINOIS			CONTRACT NO. 63494	
FED. AID PROJECT ARA-M-9003(664)				