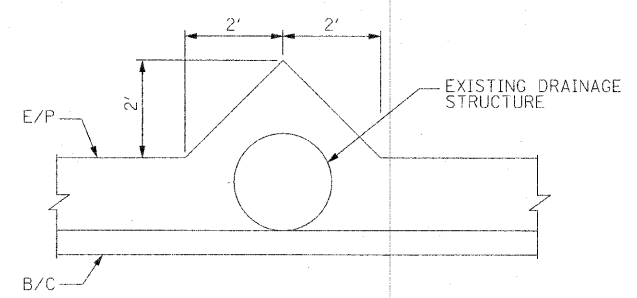
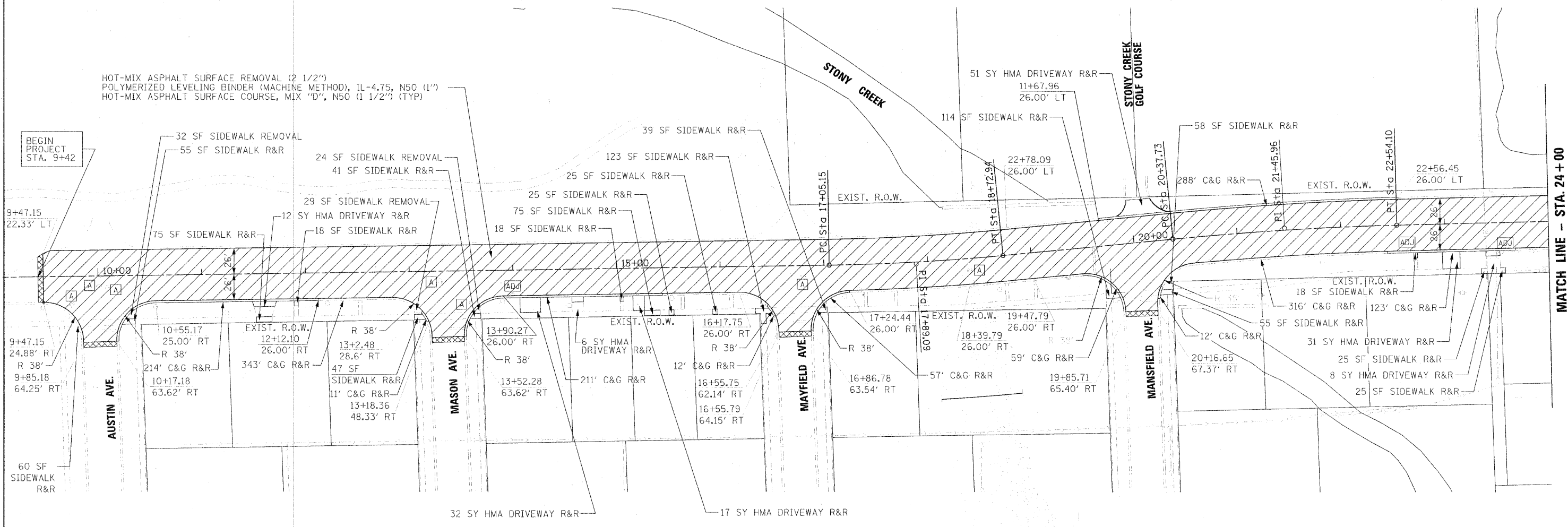
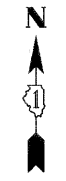
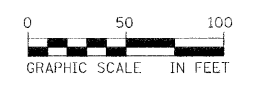


PROVIDE TEMPORARY INFORMATION SIGNS AT THE LOCATIONS DESIGNATED BY THE ENGINEER. SEE TC-22 ARTERIAL INFORMATION SIGN DETAIL.

- NOTES:
1. THE ACTUAL LOCATION OF PAVEMENT PATCHING WILL BE DETERMINED IN THE FIELD, DURING CONSTRUCTION, BY THE RESIDENT ENGINEER.
 2. ALL CRACK FILL MATERIAL TO BE REMOVED IN ENTIRETY ALONG CURB LINE. REMOVAL OF THE MATERIAL SHALL BE PAID FOR AS HOT MIX ASPHALT REMOVAL, 2 1/2".



NOTE: REMOVE & REPLACE 5' OF DRIVEWAY AND CARRIAGE WALK WHERE ADJACENT TO C&G REMOVAL AND REPLACEMENT

LEGEND:

1. HOT MIX ASPHALT SURFACE REMOVAL & REPLACE.....	
2. DRAINAGE & UTILITY STRUCTURES TO BE ADJUSTED.....	
3. FRAMES AND LIDS TO BE ADJUSTED (SPECIAL).	
4. BUTT JOINT.....	



DESIGNED KB
DRAWN IS
CHECKED DL
DATE 6/17/10

REVISIONS
REVISED
REVISED
REVISED
REVISED

**STATE OF ILLINOIS
DEPARTMENT OF TRANSPORTATION**

**PROPOSED ROADWAY PLAN
103RD STREET**

SCALE: 1" = 50' SHEET NO. 1 OF 2 SHEETS STA. 9+42 TO STA. 24+00

F.A.U. RTE. 1574	SECTION 10-00175-00-RS	COUNTY COOK	TOTAL SHEETS 20	SHEET NO. 5
FED. ROAD DIST. NO. 1 ILLINOIS FED. AID PROJECT			CONTRACT NO. 63497	