

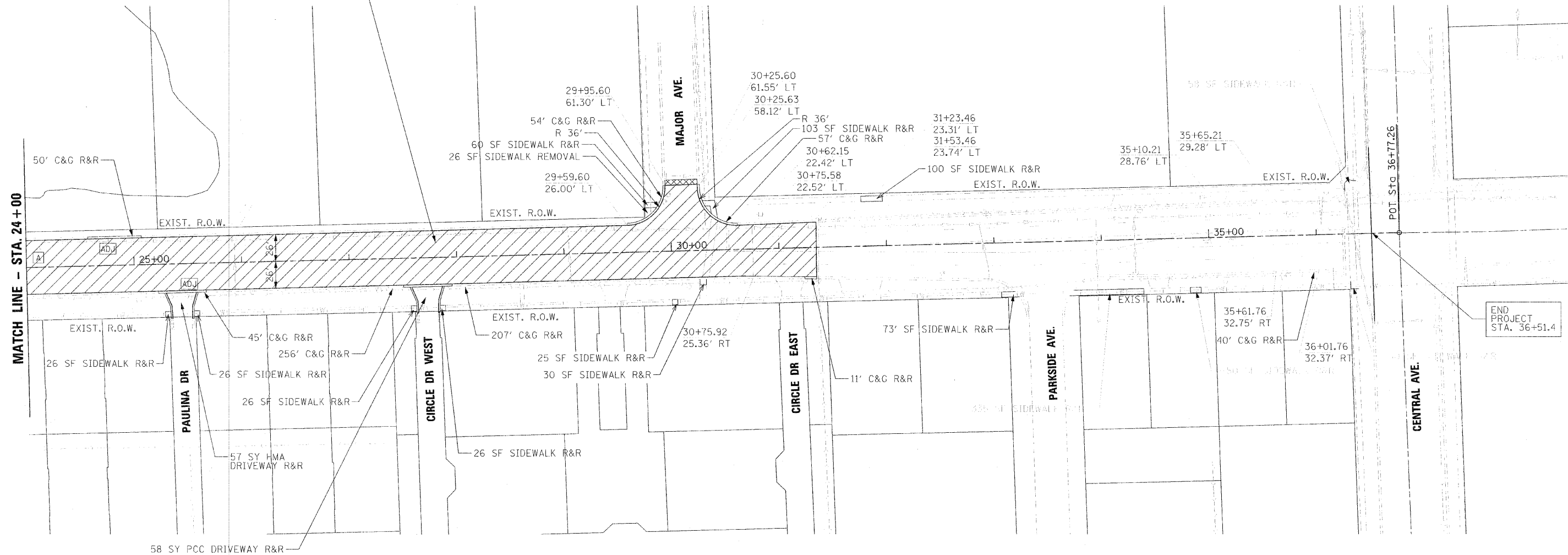
PROVIDE TEMPORARY INFORMATION SIGNS AT THE LOCATIONS DESIGNATED BY THE ENGINEER. SEE TC-22 ARTERIAL INFORMATION SIGN DETAIL.

NOTES:

1. THE ACTUAL LOCATION OF PAVEMENT PATCHING WILL BE DETERMINED IN THE FIELD, DURING CONSTRUCTION, BY THE RESIDENT ENGINEER.
2. ALL CRACK FILL MATERIAL TO BE REMOVED IN ENTIRETY ALONG CURB LINE. REMOVAL OF THE MATERIAL SHALL BE PAID FOR AS HOT MIX ASPHALT REMOVAL, 2 1/2".



HOT-MIX ASPHALT SURFACE REMOVAL (2 1/2")  
 POLYMERIZED LEVELING BINDER (MACHINE METHOD), IL-4.75, N50 (1")  
 HOT-MIX ASPHALT SURFACE COURSE, MIX "D", N50 (1 1/2") (TYP)



NOTE: REMOVE & REPLACE 5' OF DRIVEWAY AND CARRIAGE WALK WHERE ADJACENT TO C&G REMOVAL AND REPLACEMENT

LEGEND:	
1. HOT MIX ASPHALT SURFACE REMOVAL & REPLACE.....	
2. DRAINAGE & UTILITY STRUCTURES TO BE ADJUSTED.....	ADJ
3. FRAMES AND LIDS TO BE ADJUSTED (SPECIAL).	A
4. BUTT JOINT.....	



DESIGNED	KB
DRAWN	IS
CHECKED	DL
DATE	6/17/10

REVISED	-
REVISED	-
REVISED	-
REVISED	-

STATE OF ILLINOIS  
 DEPARTMENT OF TRANSPORTATION

PROPOSED ROADWAY PLAN  
 103RD STREET

SCALE: 1" = 50' SHEET NO. 2 OF 2 SHEETS STA. 24+00 TO STA. 36+51.4

F.A.U. RTE.	SECTION	COUNTY	TOTAL SHEETS	SHEET NO.
1574	10-00175-00-RS	COOK	20	6
FED. ROAD DIST. NO. 1 ILLINOIS FED. AID PROJECT			CONTRACT NO. 63497	