

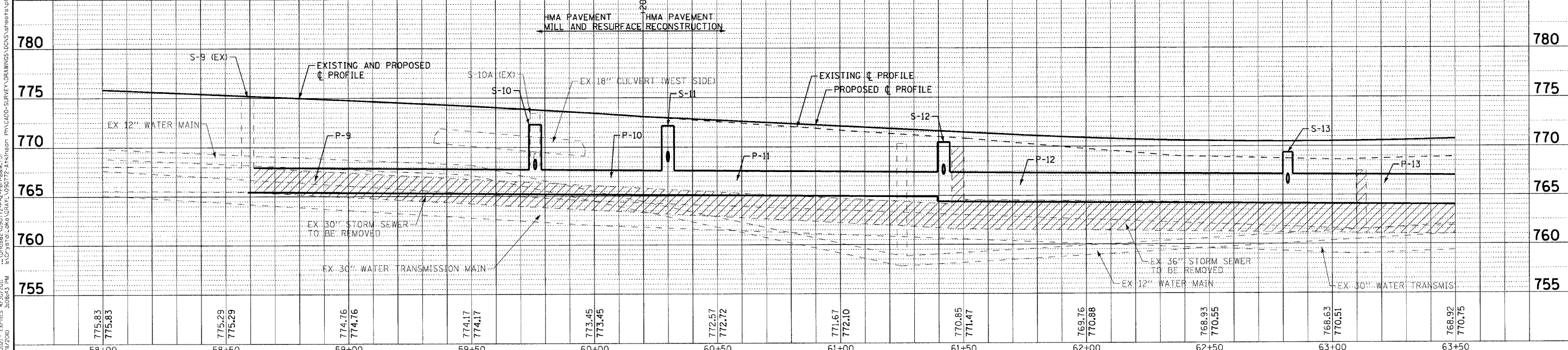
STORM STRUCTURES						
NO.	STATION	OFFSET	TYPE	FRAME	RIM / EP	INVERT
S-9 (EX)	58+59	25' RT	EXISTING MANHOLE	---	---	765.45 30" N, 765.45 30" S (EX)
S-10	59+76	25' RT	MANHOLE, TYPE A, 5' DIA	TY I CLID	772.63 RIM	765.22 30" N & S, 768.09 12" W
S-10A	59+76	18' RT	EXISTING CATCH BASIN	---	---	768.16 12" E, 768.23 12" W (EX)
S-11	60+30	25' RT	MANHOLE, TYPE A, 5' DIA	TY I CLID	771.80 RIM	765.11 30" N & S, 768.55 12" W
S-11A	60+30	18' RT	CATCH BASIN, TYPE A, 4' DIA	TY II	772.61 EOP	769.36 12" W, 768.79 12" E
S-11B	60+30	18' LT	INLET, TY A	TY II	772.61 EOP	770.11 12" E
S-12	61+40	25' RT	MANHOLE, TYPE A, 6' DIA	TY I CLID	770.43 RIM	764.39 36" N, 764.89 30" S, 767.18 12" W
S-12A	61+40	18' RT	INLET, TY A	TY II	771.24 EOP	768.89 12" W, 767.78 12" E
S-12B	61+40	18' LT	INLET, TY A	TY II	771.24 EOP	769.07 12" E
S-13	62+82	25' RT	MANHOLE, TYPE A, 6' DIA	TY I CLID	769.32 RIM	764.14 36" N & S, 766.14 12" W
S-13A	62+82	18' RT	INLET, TY B	TY II	770.13 EOP	766.74 12" E, 766.84 12" S & W
S-13B	62+72	18' RT	INLET, TY A	TY II	770.16 EOP	767.24 12" N
S-13C	62+82	18' LT	INLET, TY A	TY II	770.13 EOP	767.61 12" E & S
S-13D	62+72	18' LT	INLET, TY A	TY II	770.16 EOP	767.66 12" N

PIPES					
NO.	TYPE	LENGTH (LF)	DIA (IN)	SLOPE	TBF (CY)
P-9	STORM SEWERS, CLASS A, TYPE 2	117	30	0.20%	178
P-10	STORM SEWERS, CLASS A, TYPE 2	54	30	0.20%	65
P-10A	STORM SEWERS, CLASS A, TYPE 2	6	12	1.17%	5
P-11	STORM SEWERS, CLASS A, TYPE 2	110	30	0.20%	108
P-11A	STORM SEWERS, CLASS A, TYPE 1	6	12	4.00%	2
P-11B	STORM SEWERS, RUBBER GASKET, CLASS A, TYPE 1	36	12	2.08%	9
P-12	STORM SEWERS, CLASS A, TYPE 1	142	36	0.18%	120
P-12A	STORM SEWER, (WATER MAIN REQUIREMENTS)	6	12	10.00%	2
P-12B	STORM SEWER, (WATER MAIN REQUIREMENTS)	36	12	0.50%	6
P-13	STORM SEWERS, CLASS A, TYPE 1	103	36	0.18%	85
P-13A	STORM SEWER, (WATER MAIN REQUIREMENTS)	6	12	10.00%	2
P-13B	STORM SEWER, (WATER MAIN REQUIREMENTS)	10	12	4.00%	6
P-13C	STORM SEWER, (WATER MAIN REQUIREMENTS)	36	12	2.14%	6
P-13D	STORM SEWER, (WATER MAIN REQUIREMENTS)	10	12	0.50%	6

••CONTROLLED LOW-STRENGTH BEDDING MATERIAL - SEE DETAIL

••CONTROLLED LOW-STRENGTH BEDDING MATERIAL - SEE DETAIL

### ATKINSON ROAD



COPYRIGHT © 2009 BY BAXTER & WOODMAN, INC.  
 STATE OF ILLINOIS - PROFESSIONAL DESIGN FIRM  
 LICENSE NO. 184-00023 - EXPIRES 4/30/2011  
 6/11/2010



DESIGNED -	DJS	REVISED -	
DRAWN -	UKB	REVISED -	
CHECKED -	RWL	REVISED -	
DATE -	4-27-10	FILE -	090772-Atkin-DUL.dgn

### VILLAGE OF GRAYSLAKE, ILLINOIS ATKINSON ROAD RESURFACING AND RECONSTRUCTION IMPROVEMENTS

### DRAINAGE AND UTILITY ATKINSON ROAD

SCALE: H: 1"=20' V: 1"=5'

STA. 58+00 TO STA. 63+50

F.A.U. RTE.	SECTION	COUNTY	TOTAL SHEETS	SHEET NO.
0198	09-00058-00-RS	LAKE	46	19
FED. ROAD DIST. NO. 1   ILLINOIS			CONTRACT NO. 63498	
FED. AID PROJECT, M-9003 (485)				