

**LEGEND**

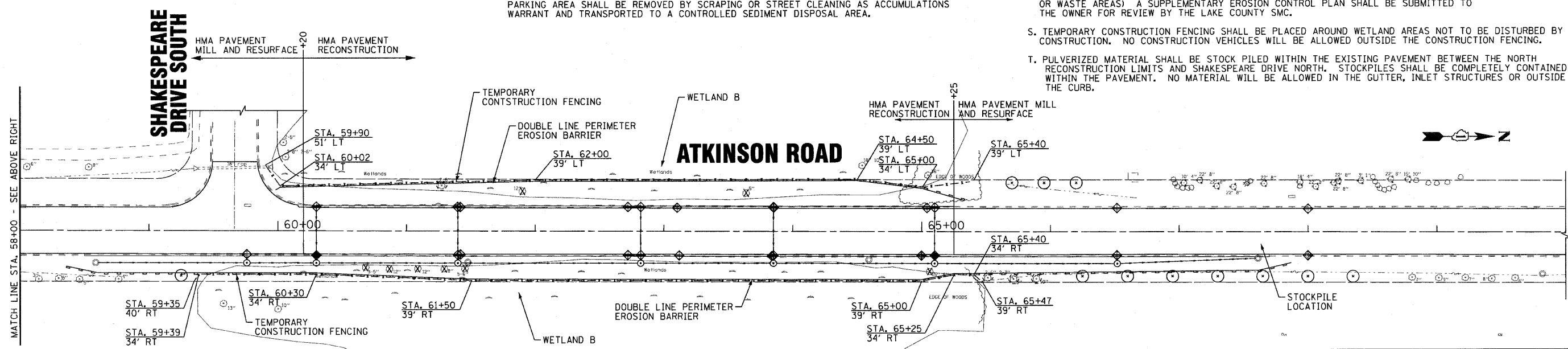
	PERIMETER EROSION BARRIER
	INLET FILTERS
	EXISTING WETLANDS
	TREE TRUNK PROTECTION

**CONSTRUCTION SEQUENCE**

1. INSTALL TEMPORARY CONSTRUCTION FENCING
2. INSTALL PERIMETER EROSION BARRIER
3. INSTALL INLET FILTERS
4. TREE TRUNK PROTECTION
5. TREE REMOVAL
6. REMOVE PAVEMENT AND STORM SEWER LATERALS.
7. INSTALL STORM SEWER.
8. TEMPORARY SEEDING AND BLANKET ON TEMPORARY GRADES.
9. INSTALL ROADWAY.
10. FINAL GRADING WITH TOPSOIL AND SEED.
11. REMOVE ALL TEMPORARY EROSION CONTROL MEASURES AFTER THE SITE IS STABILIZED WITH VEGETATION.

- SOIL EROSION AND SEDIMENT CONTROL NOTES**
- A. SOIL DISTURBANCE SHALL BE CONDUCTED IN SUCH A MANNER AS TO MINIMIZE EROSION. SOIL STABILIZATION MEASURES SHALL CONSIDER THE TIME OF YEAR, SITE CONDITIONS AND THE USE OF TEMPORARY OR PERMANENT MEASURES.
  - B. SOIL EROSION AND SEDIMENT CONTROL FEATURES SHALL BE CONSTRUCTED PRIOR TO THE COMMENCEMENT OF HYDROLOGIC DISTURBANCE OF UPLAND AREAS.
  - C. DISTURBED AREAS SHALL BE STABILIZED WITH TEMPORARY OR PERMANENT MEASURES WITHIN 14 CALENDAR DAYS OF THE END OF ACTIVE HYDROLOGIC DISTURBANCE, OR REDISTURBANCE.
  - D. AREAS OR ENBANKMENTS HAVING SLOPES GREATER THAN OR EQUAL TO 3H:1V, AND APPROVED BY THE ENFORCEMENT OFFICER, SHALL BE STABILIZED WITH SOD, MAT OR BLANKET IN COMBINATION WITH SEEDING.
  - E. EROSION CONTROL BLANKET SHALL BE REQUIRED ON ALL INTERIOR DETENTION BASIN SIDE SLOPES BETWEEN NORMAL WATER LEVEL AND HIGH WATER LEVEL.
  - F. ALL STORM SEWERS THAT ARE OR WILL BE FUNCTIONING DURING CONSTRUCTION SHALL BE PROTECTED, BY AN APPROPRIATE SEDIMENT CONTROL MEASURE.
  - G. ALL TEMPORARY EROSION AND SEDIMENT CONTROL MEASURES SHALL BE REMOVED WITHIN 30 DAYS AFTER FINAL SITE STABILIZATION IS ACHIEVED OR AFTER THE TEMPORARY MEASURES ARE NO LONGER NEEDED.
  - H. ALL TEMPORARY AND PERMANENT EROSION CONTROL MEASURES MUST BE MAINTAINED AND REPAIRED AS NEEDED. THE GENERAL CONTRACTOR WILL BE ULTIMATELY RESPONSIBLE FOR MAINTENANCE AND REPAIR.
  - I. A STABILIZED MAT OF AGGREGATE UNDERLAIN WITH FILTER CLOTH (OR OTHER APPROPRIATE MEASURE) SHALL BE LOCATED AT ANY POINT WHERE TRAFFIC WILL BE ENTERING OR LEAVING A CONSTRUCTION SITE TO OR FROM A PUBLIC RIGHT-OF-WAY, STREET, ALLEY OR PARKING AREA. ANY SEDIMENT OR SOIL REACHING AN IMPROVED PUBLIC RIGHT-OF-WAY, STREET, ALLEY OR PARKING AREA SHALL BE REMOVED BY SCRAPING OR STREET CLEANING AS ACCUMULATIONS WARRANT AND TRANSPORTED TO A CONTROLLED SEDIMENT DISPOSAL AREA.

- J. SOIL STOCKPILES SHALL NOT BE LOCATED IN A FLOOD PRONE AREA OR A DESIGNATED BUFFER PROTECTING WATERS OF THE UNITED STATES OR ISOLATED WATERS OF LAKE COUNTY.
- K. IF DEWATERING SERVICES ARE USED, ADJOINING PROPERTIES AND DISCHARGE LOCATIONS SHALL BE PROTECTED FROM EROSION. DISCHARGES SHALL BE ROUTED THROUGH AN EFFECTIVE SEDIMENT CONTROL MEASURE (e.g. SEDIMENT TRAP, SEDIMENT BASIN, OR OTHER APPROPRIATE MEASURE).
- L. THE EROSION CONTROL MEASURES INDICATED ON THE PLANS ARE THE MINIMUM REQUIREMENTS. ADDITIONAL MEASURES MAY BE REQUIRED, AS DIRECTED BY THE ENGINEER OR GOVERNING AGENCY.
- M. ALL OPEN GRATE STORM STRUCTURES, BOTH EXISTING AND PROPOSED, WITHIN THE CONSTRUCTION LIMITS AND IMMEDIATELY DOWNSTREAM, SHALL BE PROTECTED FROM SEDIMENT BY INSTALLING AND MAINTAINING INLET FILTERS.
- N. THE SOIL EROSION AND SEDIMENT CONTROL PRACTICES WILL BE INSPECTED WEEKLY AND AFTER 1/2 INCH OF RAIN OR MORE BY THE INDIVIDUAL ON SITE IN CHARGE OF SOIL EROSION AND SEDIMENT CONTROL DURING CONSTRUCTION OF THE PROJECT.
- O. UNLESS OTHERWISE INDICATED, ALL VEGETATIVE AND STRUCTURAL EROSION AND SEDIMENT CONTROL PRACTICES WILL BE CONSTRUCTED ACCORDING TO MINIMUM STANDARDS AND SPECIFICATIONS IN THE ILLINOIS URBAN MANUAL REVISED FEBRUARY 2002.
- P. STRAW OR HAY BALES WILL NOT BE ALLOWED TO BE USED FOR DITCH CHECKS OR INLET AND PIPE PROTECTION.
- Q. A COPY OF THE APPROVED EROSION AND SEDIMENT CONTROL PLAN SHALL BE MAINTAINED ON THE SITE AT ALL TIMES.
- R. PRIOR TO COMMENCING LAND-DISTURBING ACTIVITIES IN AREAS OTHER THAN INDICATED ON THESE PLANS (INCLUDING BUT NOT LIMITED TO, ADDITIONAL PHASES OF DEVELOPMENT AND OFF-SITE BORROW OR WASTE AREAS) A SUPPLEMENTARY EROSION CONTROL PLAN SHALL BE SUBMITTED TO THE OWNER FOR REVIEW BY THE LAKE COUNTY SMC.
- S. TEMPORARY CONSTRUCTION FENCING SHALL BE PLACED AROUND WETLAND AREAS NOT TO BE DISTURBED BY CONSTRUCTION. NO CONSTRUCTION VEHICLES WILL BE ALLOWED OUTSIDE THE CONSTRUCTION FENCING.
- T. PULVERIZED MATERIAL SHALL BE STOCK PILED WITHIN THE EXISTING PAVEMENT BETWEEN THE NORTH RECONSTRUCTION LIMITS AND SHAKESPEARE DRIVE NORTH. STOCKPILES SHALL BE COMPLETELY CONTAINED WITHIN THE PAVEMENT. NO MATERIAL WILL BE ALLOWED IN THE GUTTER, INLET STRUCTURES OR OUTSIDE THE CURB.



COPYRIGHT © 2009 BY BAXTER & WOODMAN, INC. ... STATE OF ILLINOIS ... LICENSE NO. ... DRAWING NO. ... FILE ...



DESIGNED -	DJS	REVISED -	
DRAWN -	UKB	REVISED -	
CHECKED -	RWL	REVISED -	
DATE -	4-27-10	FILE -	090772-ER05-SH1.dgn

**VILLAGE OF GRAYSLAKE, ILLINOIS  
ATKINSON ROAD RESURFACING  
AND RECONSTRUCTION IMPROVEMENTS**

**EROSION CONTROL PLAN**

SCALE: H: 1"=40'

STA. 46+00 TO STA. 70+00

F.A.U. RTE.	SECTION	COUNTY	TOTAL SHEETS	SHEET NO.
0198	09-00058-00-RS	LAKE	46	21
FED. ROAD DIST. NO. 1 ILLINOIS FED. AID PROJECT: M-9003 (485)			CONTRACT NO. 63498	