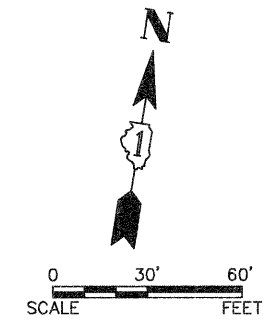
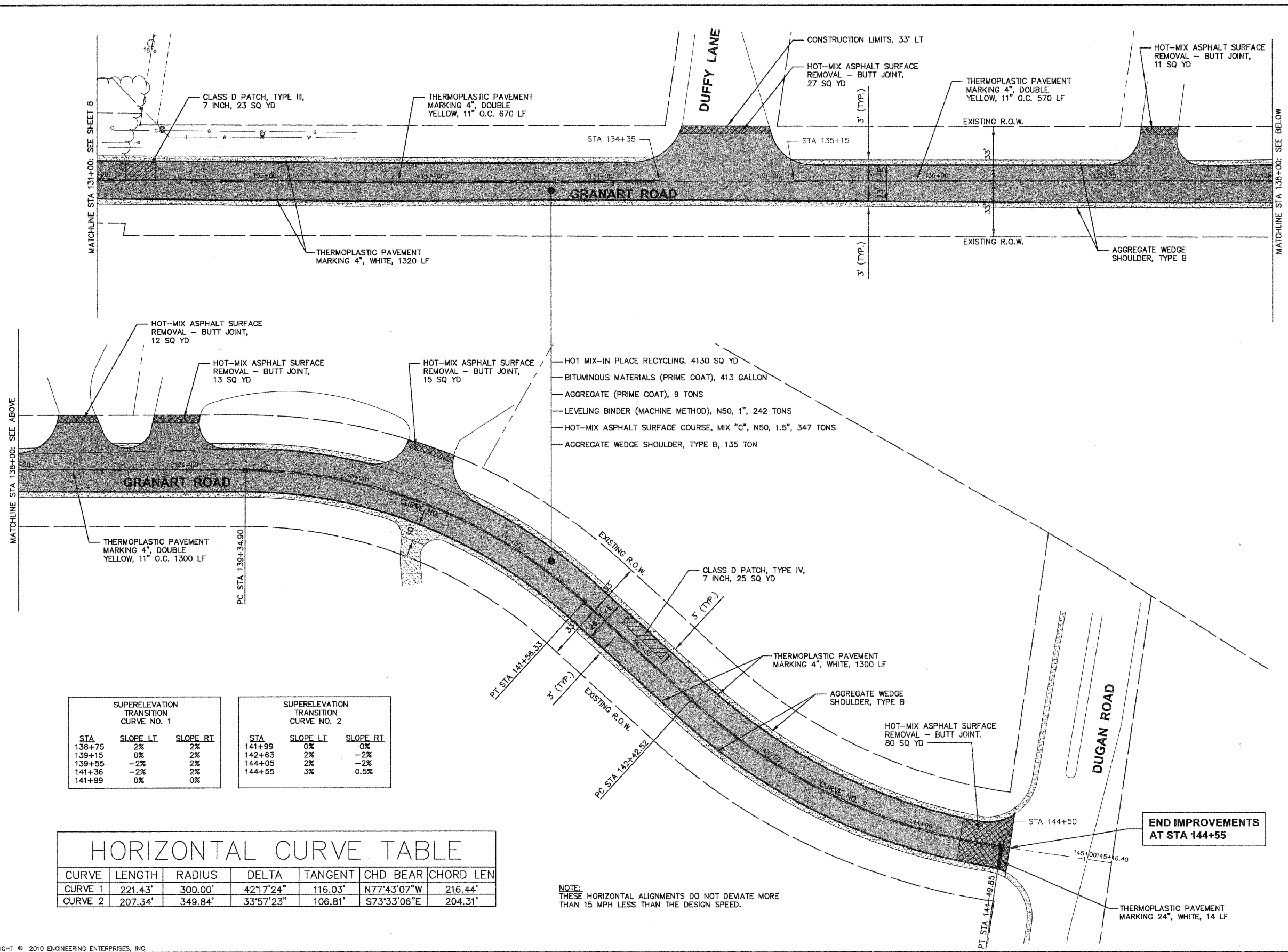


F.A.U. R.T.E.	SECTION	COUNTY	TOTAL SHEETS	SHEET NO.
3898	10-00024-00-RS	KANE	13	9
CONTRACT NO. 63499				



LEGEND

- HOT-MIX ASPHALT OVERLAY
- CLASS D PATCHES
- HOT-MIX ASPHALT SURFACE REMOVAL - BUTT JOINT
- AGGREGATE WEDGE SHOULDER, TYPE B
- EXISTING GRAVEL DRIVEWAY



SUPERELEVATION TRANSITION CURVE NO. 1

STA	SLOPE LI	SLOPE RI
138+75	2%	2%
139+15	0%	2%
139+55	-2%	2%
141+36	-2%	2%
141+99	0%	0%

SUPERELEVATION TRANSITION CURVE NO. 2

STA	SLOPE LI	SLOPE RI
141+99	0%	0%
142+63	2%	-2%
144+05	2%	-2%
144+55	3%	0.5%

HORIZONTAL CURVE TABLE

CURVE	LENGTH	RADIUS	DELTA	TANGENT	CHD BEAR	CHORD LEN
CURVE 1	221.43'	300.00'	42°17'24"	116.03'	N77°43'07"W	216.44'
CURVE 2	207.34'	349.84'	33°57'23"	106.81'	S73°33'06"E	204.31'

NOTE: THESE HORIZONTAL ALIGNMENTS DO NOT DEVIATE MORE THAN 15 MPH LESS THAN THE DESIGN SPEED.

Plotted: June 8, 2010 @ 4:25 PM By: Larry Nolan - Tab: 09 Plan - 22x34

Engineering Enterprises, Inc.
 CONSULTING ENGINEERS
 52 Wheeler Road
 Sugar Grove, Illinois 60554
 630.466.6700 / www.eeiweb.com

VILLAGE OF SUGAR GROVE
 KANE COUNTY, ILLINOIS

NO.	DATE	REVISIONS

GRANART ROAD
LAPP IMPROVEMENTS

PLAN, CONSTRUCTION
NOTES, AND DETAILS

DATE:	JUNE 2010
PROJECT NO:	SG1012
FILE:	SG1012-PLAN
SHEET	9 OF 13

P:\H:\SUGAR\SG1012\DWG\SG1012.DWG FINAL ENG SG1012-PLAN