

F.A.U. RTE.	SECTION	COUNTY	TOTAL SHEETS	SHEET NO.
1339	09-00054-00-CH	COOK	88	1
FED. ROAD DIST. NO. 1		ILLINOIS	CONTRACT NO. 63505	

**INDEX OF SHEETS**  
FOR INDEX OF SHEETS, SEE SHEET NO. 2

STATE OF ILLINOIS  
DEPARTMENT OF TRANSPORTATION  
DIVISION OF HIGHWAYS

# PROPOSED HIGHWAY PLANS

FAU ROUTE 1339 (BIESTERFIELD ROAD)  
AT I-290 ON-RAMPS  
SECTION 09-00054-00-CH  
PROJECT ARA-M-9003(569)  
ROADWAY WIDENING  
VILLAGE OF ELK GROVE VILLAGE  
COOK COUNTY  
C-91-341-10

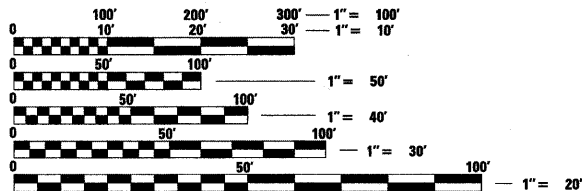


LOCATION OF SECTION INDICATED THIS: -

**DESIGN SPEED:**  
BIESTERFIELD ROAD - 45 MPH  
I-290 EB ON-RAMP - 50 MPH

**POSTED SPEED:**  
BIESTERFIELD ROAD - 40 MPH  
I-290 EB ON-RAMP - N/A

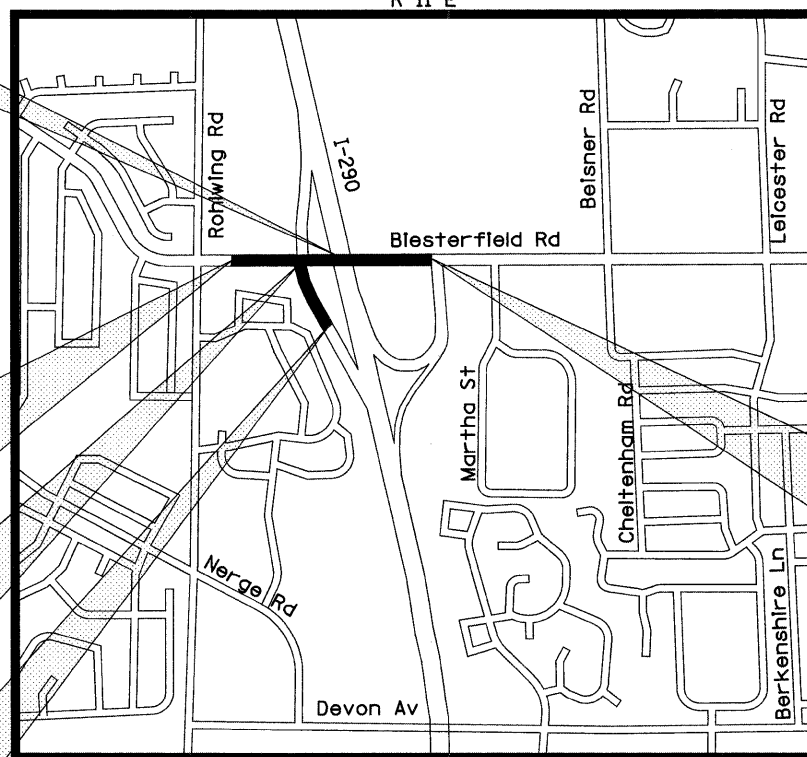
**DESIGN DESIGNATIONS:**  
BIESTERFIELD ROAD - 35,000 (2030) MINOR ARTERIAL 1.17 (COMP-20)  
I-290 EB ON-RAMP - 10,000 (2030) RAMP 0.32 (PCC-20)



FULL SIZE PLANS HAVE BEEN PREPARED USING STANDARD ENGINEERING SCALES. REDUCED SIZED PLANS WILL NOT CONFORM TO STANDARD SCALES. IN MAKING MEASUREMENTS ON REDUCED PLANS, THE ABOVE SCALES MAY BE USED.

J.U.L.I.E.  
JOINT UTILITY LOCATION INFORMATION FOR EXCAVATION  
1-800-892-0123 OR 811

CONTRACT NO. 63505



IMPROVEMENT BEGINS STA. 13+20.0 BIESTERFIELD ROAD

IMPROVEMENT BEGINS STA. 50+00.0 I-290 EB ON-RAMP

IMPROVEMENT ENDS STA. 58+00.0 I-290 EB ON-RAMP

LOCATION MAP NOT TO SCALE

IMPROVEMENT ENDS STA. 30+12.2 BIESTERFIELD ROAD

PROJECT LENGTH:  
BIESTERFIELD ROAD - 1692.2 FT. (0.320 MILE) (GROSS)  
1351.2 FT. (0.256 MILE) (NET)  
I-290 EB ON-RAMP - 800.0 FT. (0.152 MILE) (NET AND GROSS)



SIGNED [Signature] DATE 6/16/2010 EXPIRES 11-30-2011 FOR DRAWINGS 27-38



SIGNED [Signature] DATE 16 JUNE 2010 EXPIRES 11-30-2011 FOR DRAWINGS 39-54



SIGNED [Signature] DATE 6/16/2010 EXPIRES 11-30-2011 FOR DRAWINGS 55-59

STATE OF ILLINOIS  
DEPARTMENT OF TRANSPORTATION  
DIVISION OF HIGHWAYS

APPROVED [Signature] 20 10  
DIRECTOR OF TRANSPORTATION AND PUBLIC WORKS

PASSED [Signature] 20 10  
DISTRICT ONE ENGINEER OF LOCAL ROADS & STREETS

RELEASING FOR BID BASED ON LIMITED REVIEW [Signature] 20 10  
DEPUTY DIRECTOR OF HIGHWAYS, REGION ONE ENGINEER

PRINTED BY THE AUTHORITY OF THE STATE OF ILLINOIS



SIGNED [Signature] DATE 6-16-2010 EXPIRES 11-30-2011 FOR DRAWINGS 1-26, 40-88

CIVILTECH  
450 E. Devon Ave, Suite 300 - Itasca, Illinois 60143  
Tel: 630.773.3900 - Fax: 630.773.3975  
www.civiltechinc.com

PROGRAM AND OFFICE ENGINEER: CHARLES F. RIDDLE, P.E. (847) 705-4406  
CONSULTANT ENGINEER: DAVID KREEGER, P.E. CIVILTECH ENGINEERING, INC.