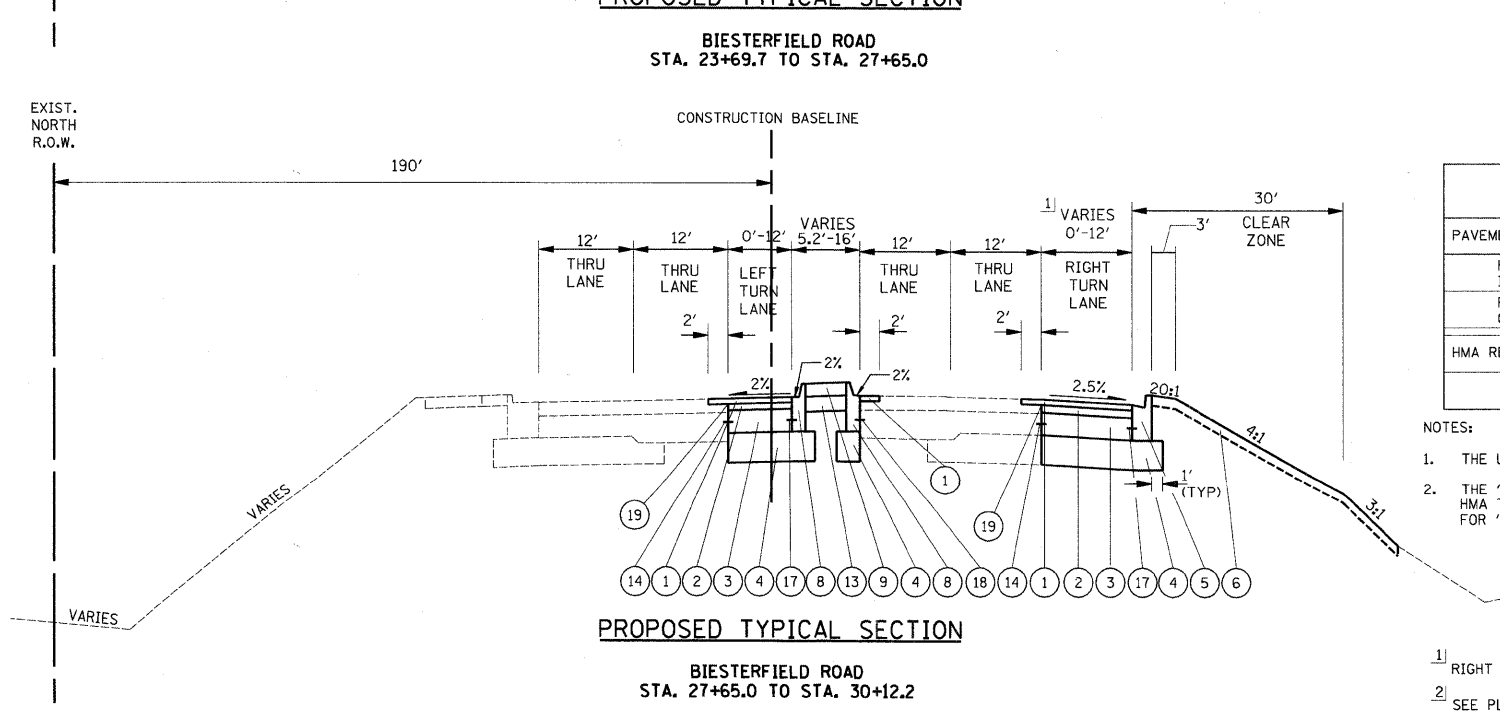
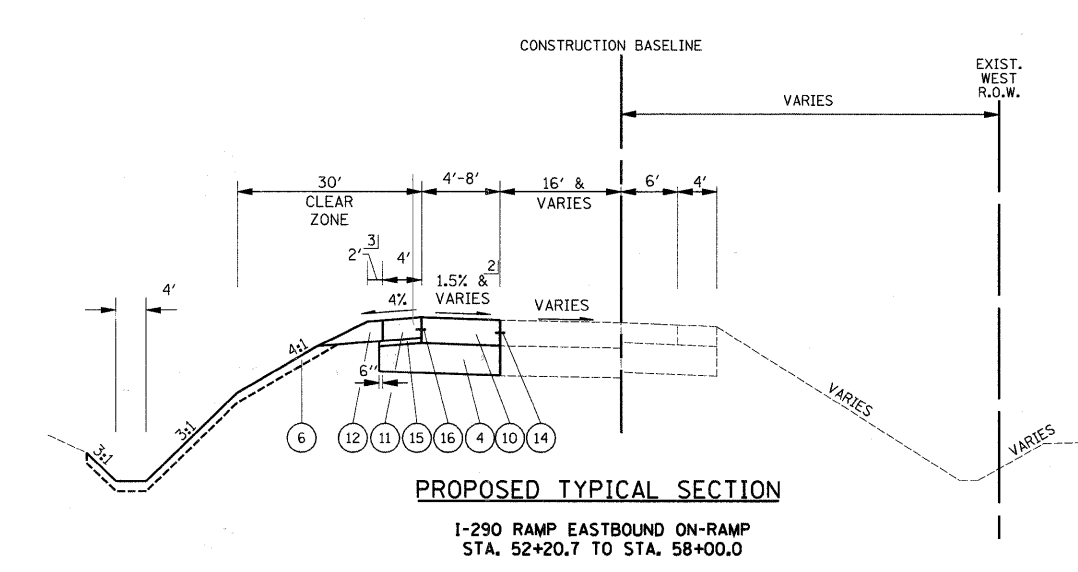
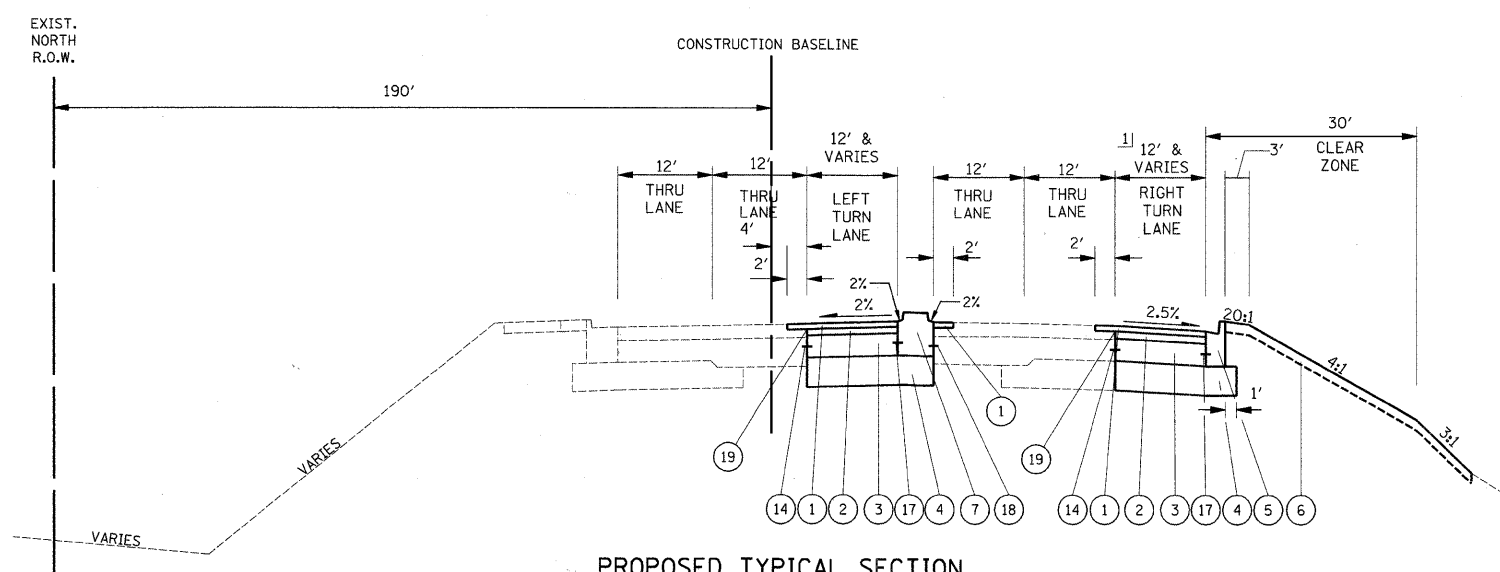
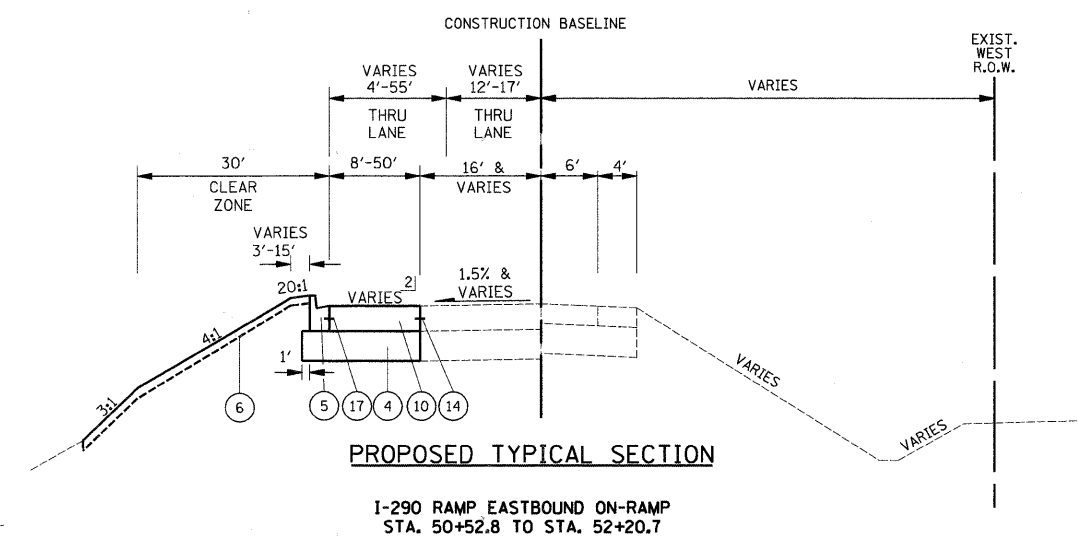
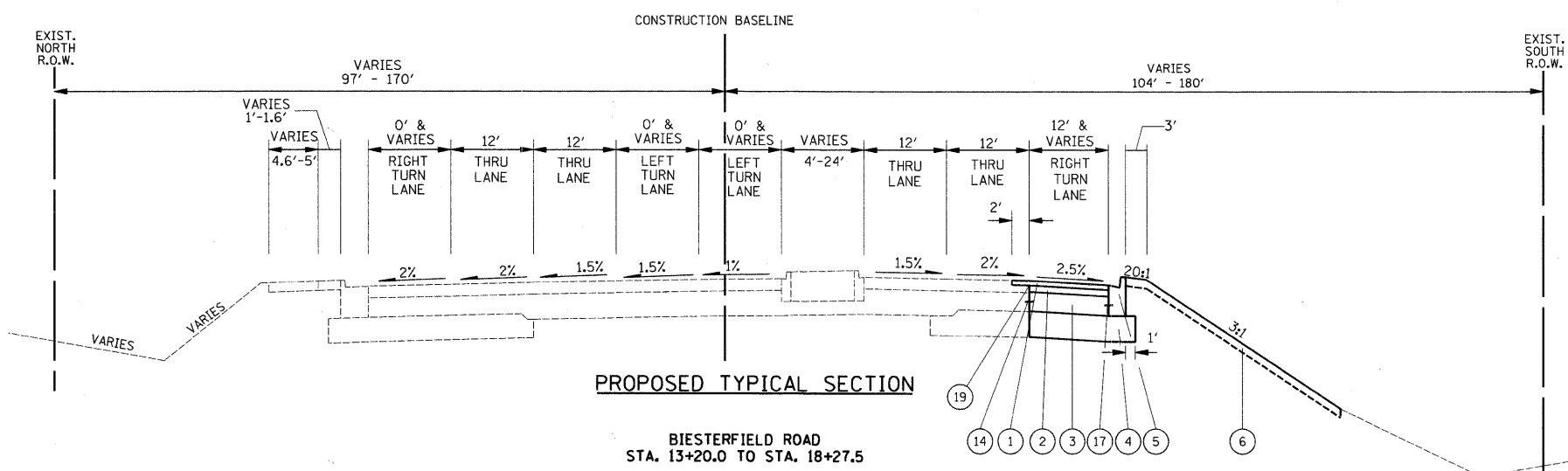


| | |
|----------|--|
| DATE | |
| BY | |
| REVISION | |
| PLANNED | |
| ALIGNED | |
| CHECKED | |
| NO. 1 | |
| NO. 2 | |
| NO. 3 | |
| NO. 4 | |
| NO. 5 | |
| NO. 6 | |
| NO. 7 | |
| NO. 8 | |
| NO. 9 | |
| NO. 10 | |
| NO. 11 | |
| NO. 12 | |
| NO. 13 | |
| NO. 14 | |
| NO. 15 | |
| NO. 16 | |
| NO. 17 | |
| NO. 18 | |
| NO. 19 | |

| | |
|----------|--|
| DATE | |
| BY | |
| REVISION | |
| PLANNED | |
| ALIGNED | |
| CHECKED | |
| NO. 1 | |
| NO. 2 | |
| NO. 3 | |
| NO. 4 | |
| NO. 5 | |
| NO. 6 | |
| NO. 7 | |
| NO. 8 | |
| NO. 9 | |
| NO. 10 | |
| NO. 11 | |
| NO. 12 | |
| NO. 13 | |
| NO. 14 | |
| NO. 15 | |
| NO. 16 | |
| NO. 17 | |
| NO. 18 | |
| NO. 19 | |



THE CONTRACTOR SHALL MILL BEFORE PATCHING.
HOT-MIX ASPHALT MIXTURE REQUIREMENTS

| PAY ITEM | AIR VOIDS @ Ndes |
|--|---------------------|
| PAVEMENT WIDENING | |
| POLYMERIZED HOT-MIX ASPHALT SURFACE COURSE, IL-9.5, MIX "F", N90 - 1 3/4" (1L-9.5mm) | 4% @ 90 GYR. |
| POLYMERIZED HOT-MIX ASPHALT BINDER COURSE, IL-19.0, N90 - 2 1/4" | 4% @ 90 GYR. |
| HMA REPLACEMENT OVER PATCHING | |
| HMA REPLACEMENT OVER PATCHING | 4% @ 70 GYR. |

- NOTES:
- THE UNIT WEIGHT TO CALCULATE ALL HOT-MIX ASPHALT SURFACE MIXTURES IS 112 LB/SY-IN.
 - THE "AC TYPE" FOR POLYMERIZED HMA MIXES SHALL BE "SBS/SBR PG 70-22" AND FOR NON-POLYMERIZED HMA THE "AC TYPE" SHALL BE "PG 64-22" UNLESS MODIFIED BY DISTRICT ONE SPECIAL PROVISIONS. FOR "PERCENT OF RAP" SEE DISTRICT ONE SPECIAL PROVISIONS.

- RIGHT TURN LANE WIDENING STA. 24+50 TO STA. 28+00
- SEE PLAN AND PROFILE AND INTERSECTION GRADING PLAN FOR CROSS SLOPE INFORMATION
- PAY LIMITS OF AGGREGATE SHOULDERS, TYPE B 8"

- LEGEND**
- POLYMERIZED HOT-MIX ASPHALT SURFACE COURSE, MIX "F", N90 - 1 3/4"
 - POLYMERIZED HOT-MIX ASPHALT BINDER COURSE, IL-19.0, N90 - 2 1/4"
 - P.C.C. BASE COURSE 8"
 - AGGREGATE SUBGRADE 12"
 - COMBINATION CONCRETE CURB AND GUTTER, TYPE B-6.24
 - TOPSOIL, FURNISH AND PLACE 4" & SEEDING, CLASS 2A
 - CONCRETE MEDIAN, TYPE SB-6.06
 - COMBINATION CONCRETE CURB AND GUTTER, TYPE B-6.06
 - CONCRETE MEDIAN SURFACE, 5" (MODIFIED)
 - P.C.C. PAVEMENT, 10 1/4" (JOINTED)
 - P.C.C. SHOULDERS, 8"
 - AGGREGATE SHOULDERS, TYPE B 8"
 - SUB-BASE GRANULAR MATERIAL, TYPE B 6"
 - *8 EPOXY COATED TIE BAR, DEFORMED, 24" LONG @ 24" C-C (DRILLED AND GROUTED) (EMBED 8" MIN)
 - SUB-BASE GRANULAR MATERIAL, TYPE C
 - *6 TIE BAR, PER STD 483001-04 (INCLUDED IN COST OF P.C.C. SHOULDERS, 8")
 - *6 TIE BAR, PER STD 606001-04 (INCLUDED IN COST OF COMB. CURB AND GUTTER, TYPE B-6.24, COMB. CONC. CURB AND GUTTER, TYPE B-6.06 OR CONC. MEDIAN, TYPE SB-6.06)
 - *6 EPOXY COATED TIE BAR, DEFORMED, 24" LONG @ 24" C-C (DRILLED AND GROUTED) (EMBED 8" MIN)
 - STRIP REFLECTIVE CRACK CONTROL TREATMENT

FILE NAME = ...cad\sheet\2349_TYP_prop.dgn

USER NAME = djc
DESIGNED - BLG
DRAWN - BLG
CHECKED - DJC
DATE - 07-07-10

REVISED -
REVISED -
REVISED -
REVISED -

**STATE OF ILLINOIS
DEPARTMENT OF TRANSPORTATION**

**IL ROUTE 53 (BIESTERFIELD ROAD) @ I-290
PROPOSED TYPICAL SECTIONS**
NOT TO SCALE SHEET NO. 2 OF 2 SHEETS

| | | | | |
|--|----------------|--------|--------------|-----------|
| F.A.U. RTE. | SECTION | COUNTY | TOTAL SHEETS | SHEET NO. |
| 1339 | 09-00054-00-CH | COOK | 88 | 9 |
| CONTRACT NO. 63505 | | | | |
| FED. ROAD DIST. NO. 1 ILLINOIS FED. AID PROJECT ARA-M-90035691 | | | | |