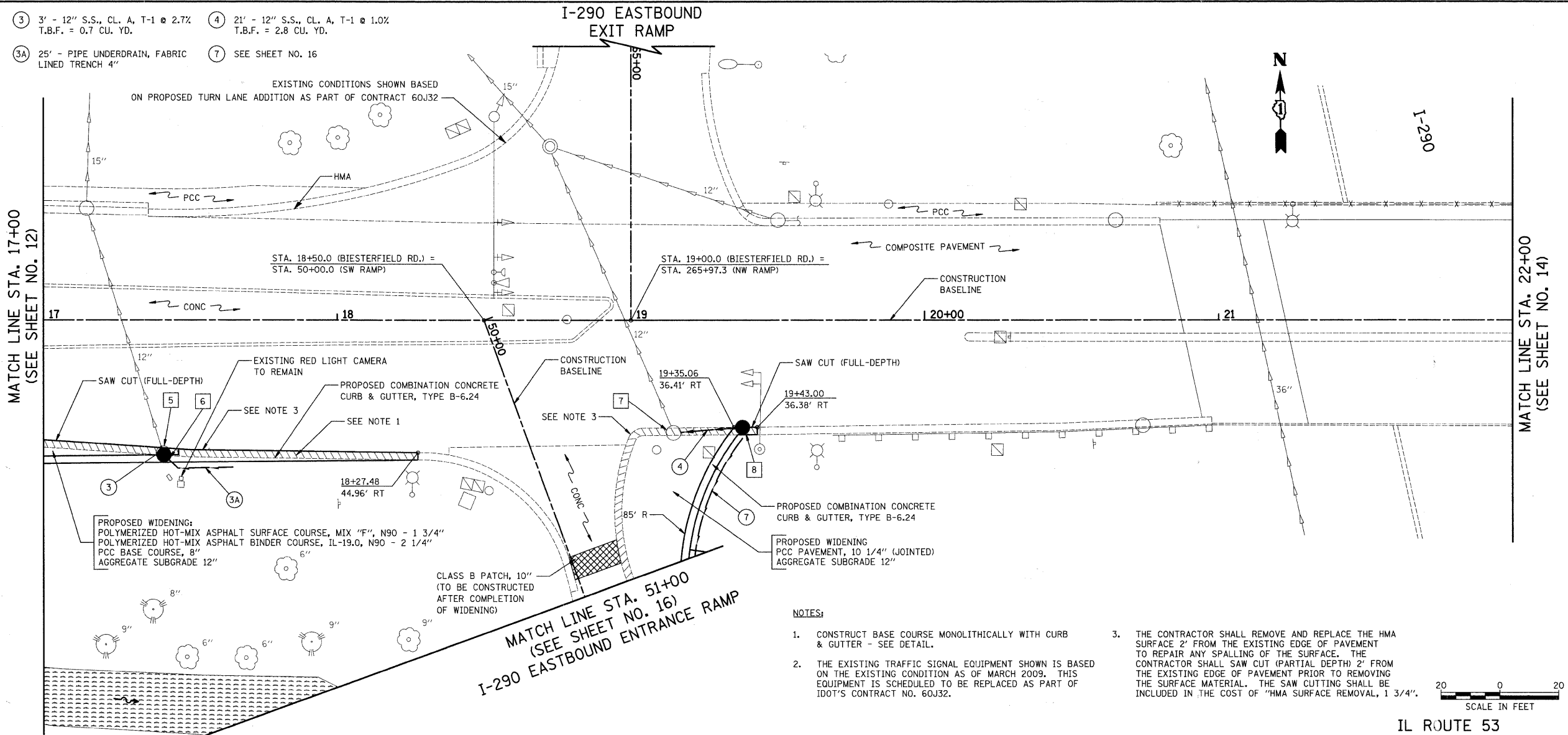
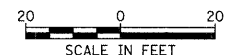


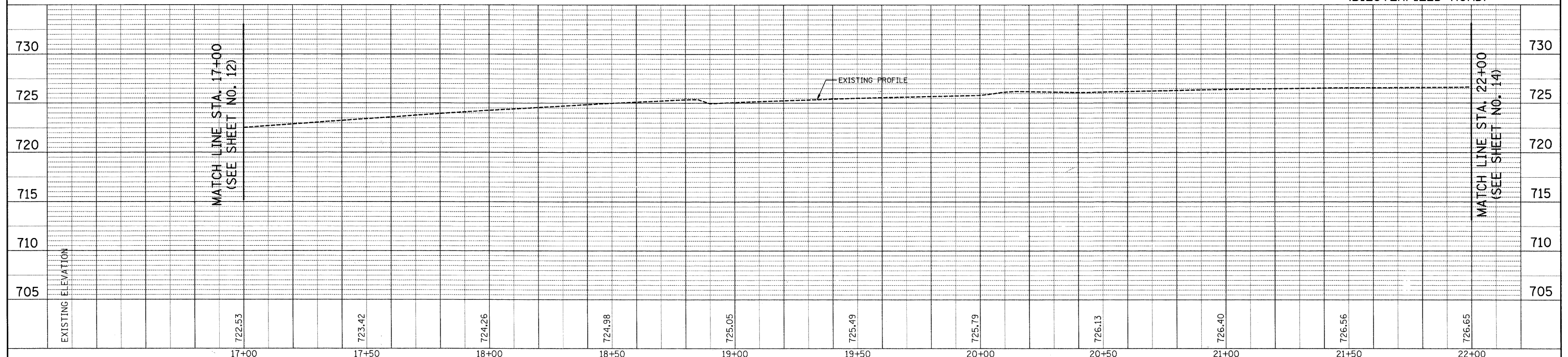
- 5 STA. 17+40.77, 45.3' RT
REMOVING CB
TO MAINTAIN FLOW
INV = 717.99 (EX 12" NW)
- 6 STA. 17+41.01, 45.8' RT
CB T-A, 4' DIA
TYPE 24 F & G
RIM = 721.88
INV = 718.07 (12" NW)
INV = 718.07 (4" SE)
- 7 STA. 19+14.50, 38.3' RT
CB TO BE ADJUSTED
W/ NEW T-1 FR., C.L.
EX RIM = 724.37
PR RIM = 724.50
INV = 722.17 (EX 12" NW)
INV = 722.17 (12" E)
- 8 STA. 19+38.00, 36.4' RT
CB T-A, 4' DIA
TYPE 24 F & G
RIM = 724.69
INV = 722.38 (12" W)



- NOTES:**
1. CONSTRUCT BASE COURSE MONOLITHICALLY WITH CURB & GUTTER - SEE DETAIL.
 2. THE EXISTING TRAFFIC SIGNAL EQUIPMENT SHOWN IS BASED ON THE EXISTING CONDITION AS OF MARCH 2009. THIS EQUIPMENT IS SCHEDULED TO BE REPLACED AS PART OF IDOT'S CONTRACT NO. 60J32.
 3. THE CONTRACTOR SHALL REMOVE AND REPLACE THE HMA SURFACE 2" FROM THE EXISTING EDGE OF PAVEMENT TO REPAIR ANY SPALLING OF THE SURFACE. THE CONTRACTOR SHALL SAW CUT (PARTIAL DEPTH) 2" FROM THE EXISTING EDGE OF PAVEMENT PRIOR TO REMOVING THE SURFACE MATERIAL. THE SAW CUTTING SHALL BE INCLUDED IN THE COST OF "HMA SURFACE REMOVAL, 1 3/4\"



**IL ROUTE 53
(BIESTERFIELD ROAD)**



PLAN	SURVEYED	BY	DATE
	PLOTTED		
	CHECKED		
	RT. OF WAY CHECKED		
	CADD FILE NAME		
	NO.		

PROFILE	SURVEYED	BY	DATE
	PLOTTED		
	CHECKED		
	RT. OF WAY CHECKED		
	STRUCTURE NOTATIONS CHECKED		
	NO.		

FILE NAME = ...\\2349\cad\sheet\2349.D&U 02.dgn	USER NAME = djk	DESIGNED - BLG	REVISED -	STATE OF ILLINOIS DEPARTMENT OF TRANSPORTATION	IL ROUTE 53 (BIESTERFIELD ROAD) @ I-290 PLAN AND PROFILE	F.A.U. RTE. 1339	SECTION 09-00054-00-CH	COUNTY COOK	TOTAL SHEETS 88	SHEET NO. 13
PLOT SCALE = 20,000' / IN. PLOT DATE = 7/7/2010				SCALE: 1" = 20' SHEET NO. 2 OF 6 SHEETS STA. 17+00.0 TO STA. 22+00.0		CONTRACT NO. 63505 FED. ROAD DIST. NO. 1 ILLINOIS FED. AID PROJECT ARA-M-90031569				