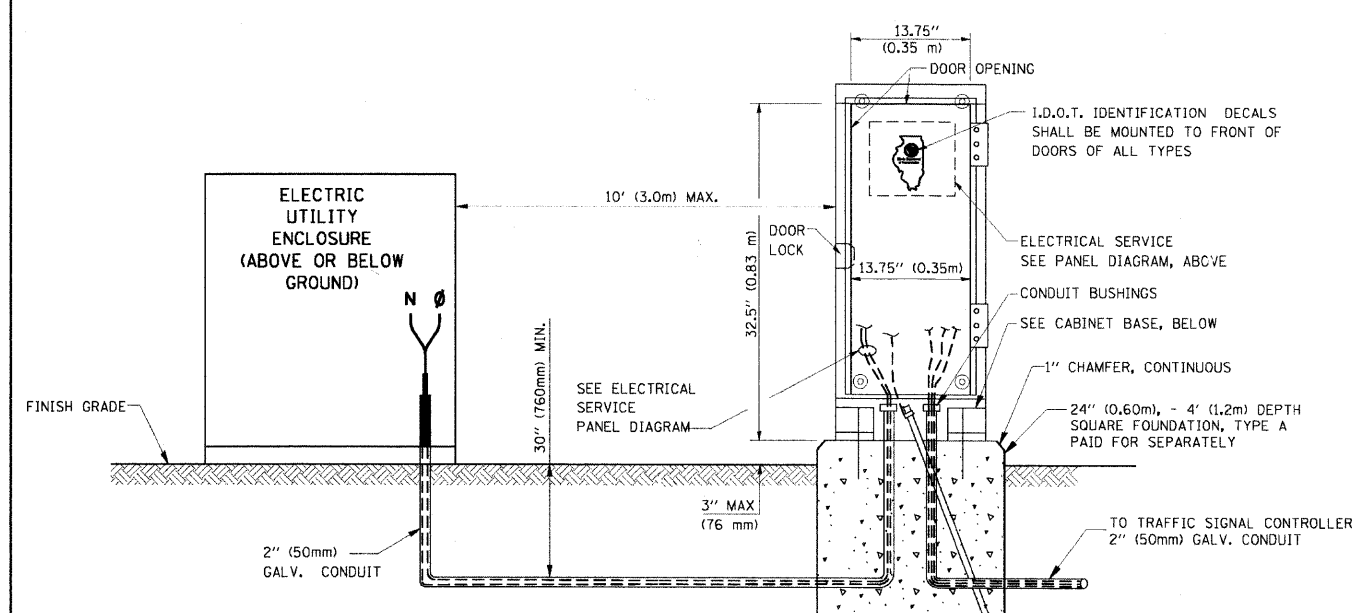
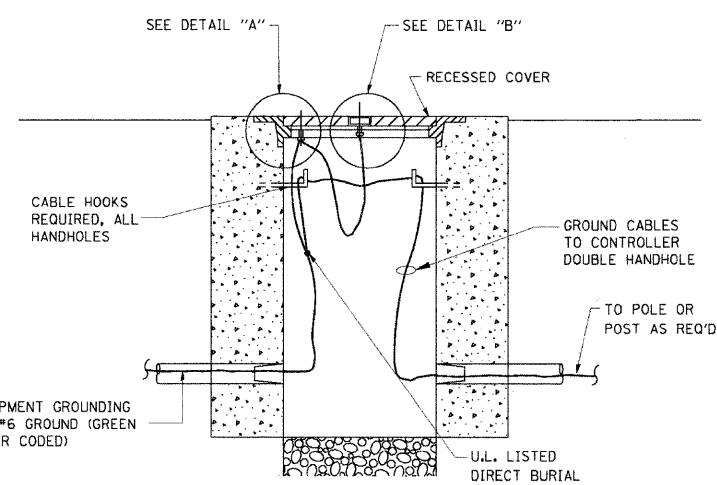
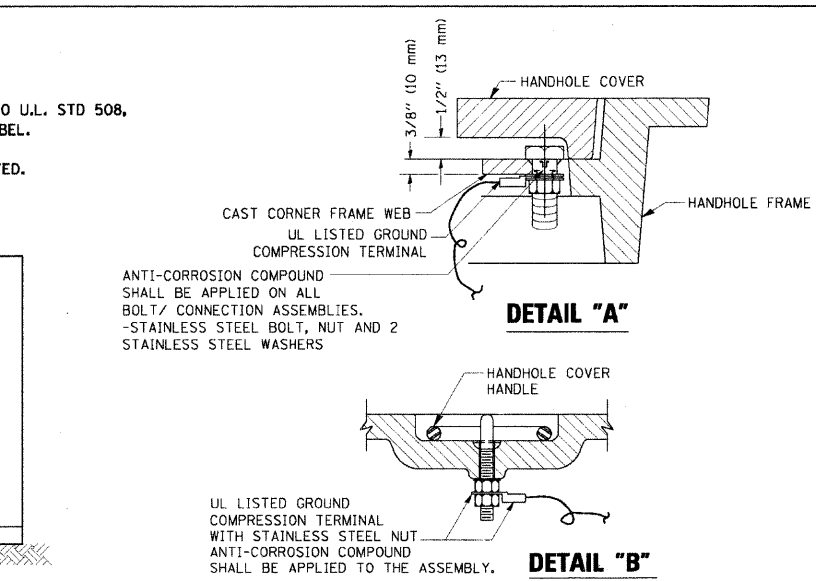


ELECTRICAL SERVICE - PANEL DIAGRAM (TYPICAL FOR POLE AND GROUND MOUNTED SERVICE)
SERVICE INSTALLATION POLE MOUNT (SHOWN)
 (NOT TO SCALE)

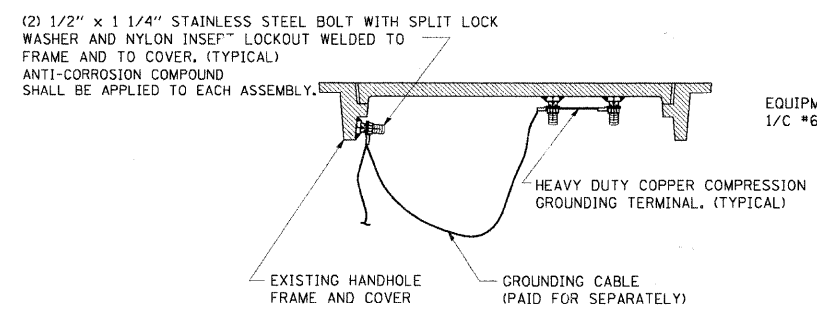


SERVICE INSTALLATION GROUND MOUNT (NOT TO SCALE)

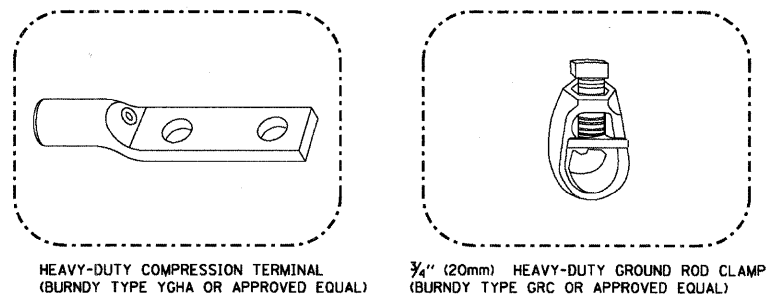
CABINET - BASE BOLT PATTERN (NOT TO SCALE)



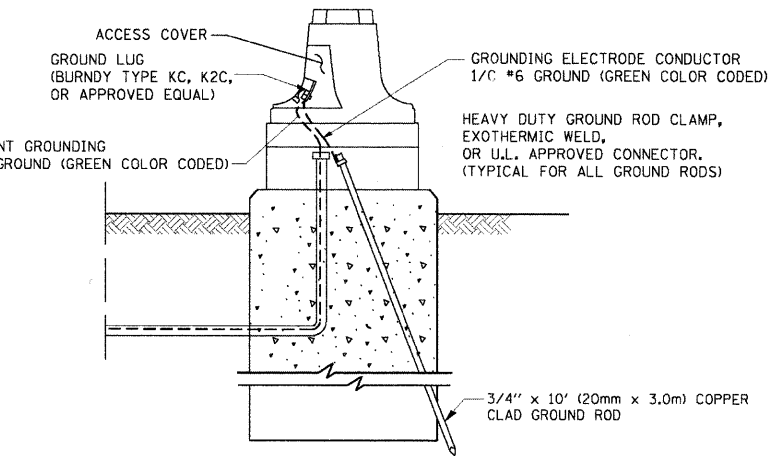
HANDHOLE COVER & FRAME - GROUNDING DETAIL (NOT TO SCALE)



EXISTING HANDHOLE COVER & FRAME - GROUNDING DETAIL (NOT TO SCALE)



- NOTES:**
- ALL CLAMPS SHALL BE BRONZE OR COPPER, UL APPROVED.
 - GROUND CABLE SHALL BE LOOPED OVER HOOKS IN THE HANDHOLES 6.5' (2.0m) SLACK SHALL BE PROVIDED IN SINGLE HANDHOLES 13' (4.0m) OF SLACK SHALL BE PROVIDED IN DOUBLE HANDHOLES. 5' (1.4m) OF SLACK SHALL BE PROVIDED BETWEEN FRAME AND COVER.



MAST ARM POLE / POST-GROUNDING DETAIL (NOT TO SCALE)

FILE NAME =	USER NAME = kanthephixaybc	DESIGNED - DAD	REVISED -
es:\pwwork\p\WIDOT\KANTHRPHIXAYBC\d01126	4\traffic\legend.v7.dgn	DRAWN - BCK	REVISED -
PLOT SCALE = 28.0/80 "/ IN.	CHECKED - DAD	REVISED -	REVISED -
PLOT DATE = 10/6/2009	DATE - 10/28/09	REVISED -	REVISED -

**STATE OF ILLINOIS
 DEPARTMENT OF TRANSPORTATION**

**DISTRICT 1
 STANDARD TRAFFIC SIGNAL DESIGN DETAILS**

SCALE: SHEET NO. 3 OF 6 SHEETS STA. TO STA.

F.A.U. RTE.	SECTIC ^{NO.}	COUNTY	TOTAL SHEETS	SHEET NO.
1339	09-00054-00-CH	COOK	88	35
CONTRACT NO. 63505				
FED. ROAD DIST. NO. 1 ILLINOIS FED. AID PROJECT ARA-M-9003(569)				